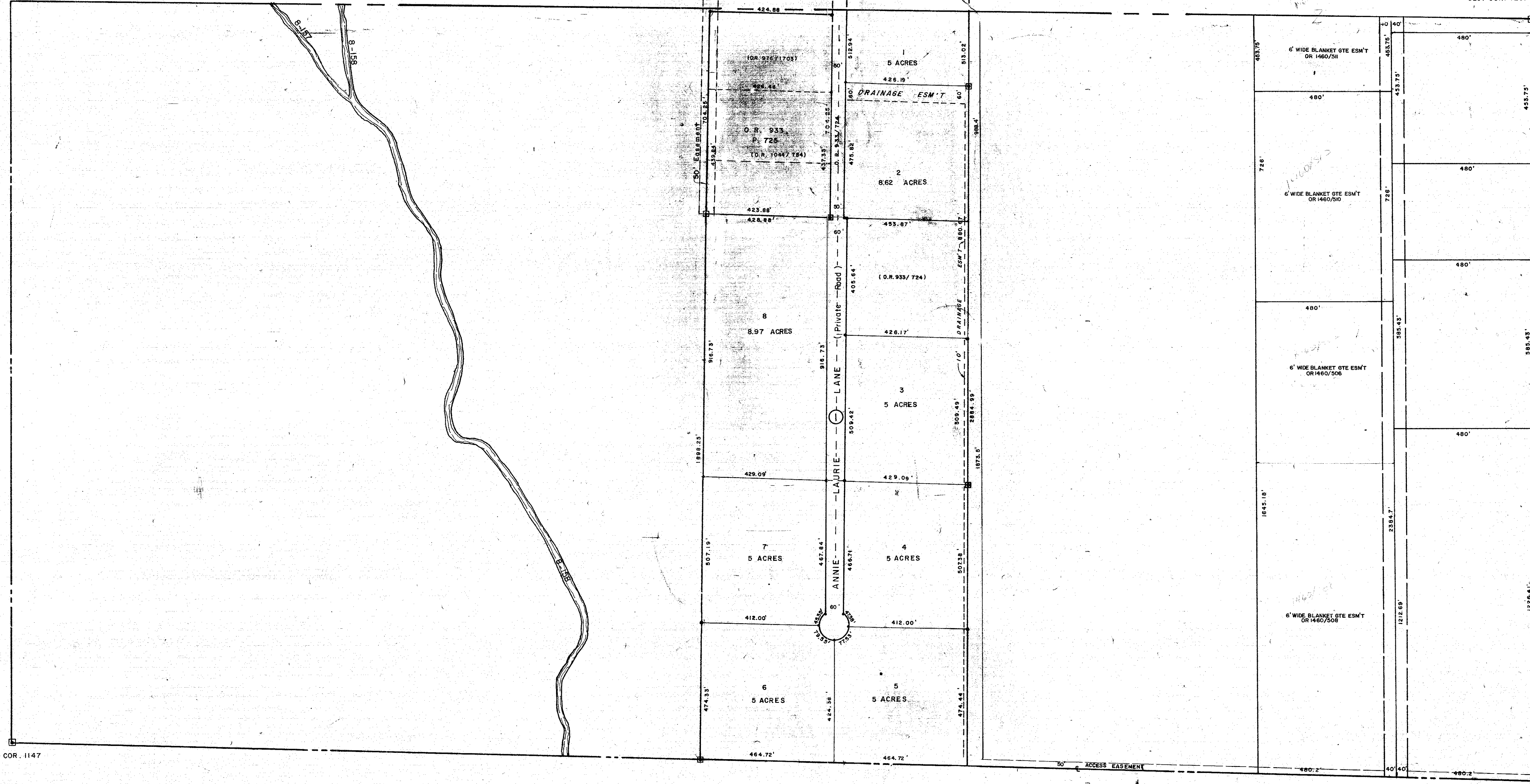


N. 1/2 20-36-20 SHT. NO. 543

SEC. COR. 1267

S. 1/2 19-36-20 SHT. NO. 542

SEC. COR. 1147



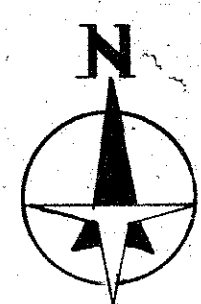
S. 1/2 22-36-20 SHT. NO. 546

SEC. COR. 1268

N. 1/2 29-36-20 SHT. NO. 561

SUBDIVISION INDEX

1. Quail Hollow, 23/7 A



- LEGEND**
- PERM. REF. MON. (for Subs)
 - CONC. MON.
 - IRON PIPE
 - ⊙ CO. SEC. COR. MARK
 - ⊕ CO. BENCH MARK

ALTERATIONS	
DATE	DESCRIPTION
FEB. 1975	SPLITS & REVISIONS
OCT. 1975	ADD. MON.
APR. 1976	REMOVED ONE SECTION CORNER
JULY 1976	REMOVED ONE SECTION CORNER
NOV. 1976	REMOVED ONE SECTION CORNER
SEPT. 1987	ADDED CANAL NUMBERS
NOV. 1988	ADDED 6' WIDE BLANKET GTE ESM'TS Per OR 1460 PAGES 506, 508, 510 & 511

SARASOTA COUNTY FLORIDA
 SCALE: 1" = 200'
 DEC. 1968

**S. 1/2 SECTION 20
 TWP. 36 S. RNG. 20 E.**

SHT. NO.
544