

N 1/2 23-36-20 SHT. NO. 549

SEC. COR. 1629

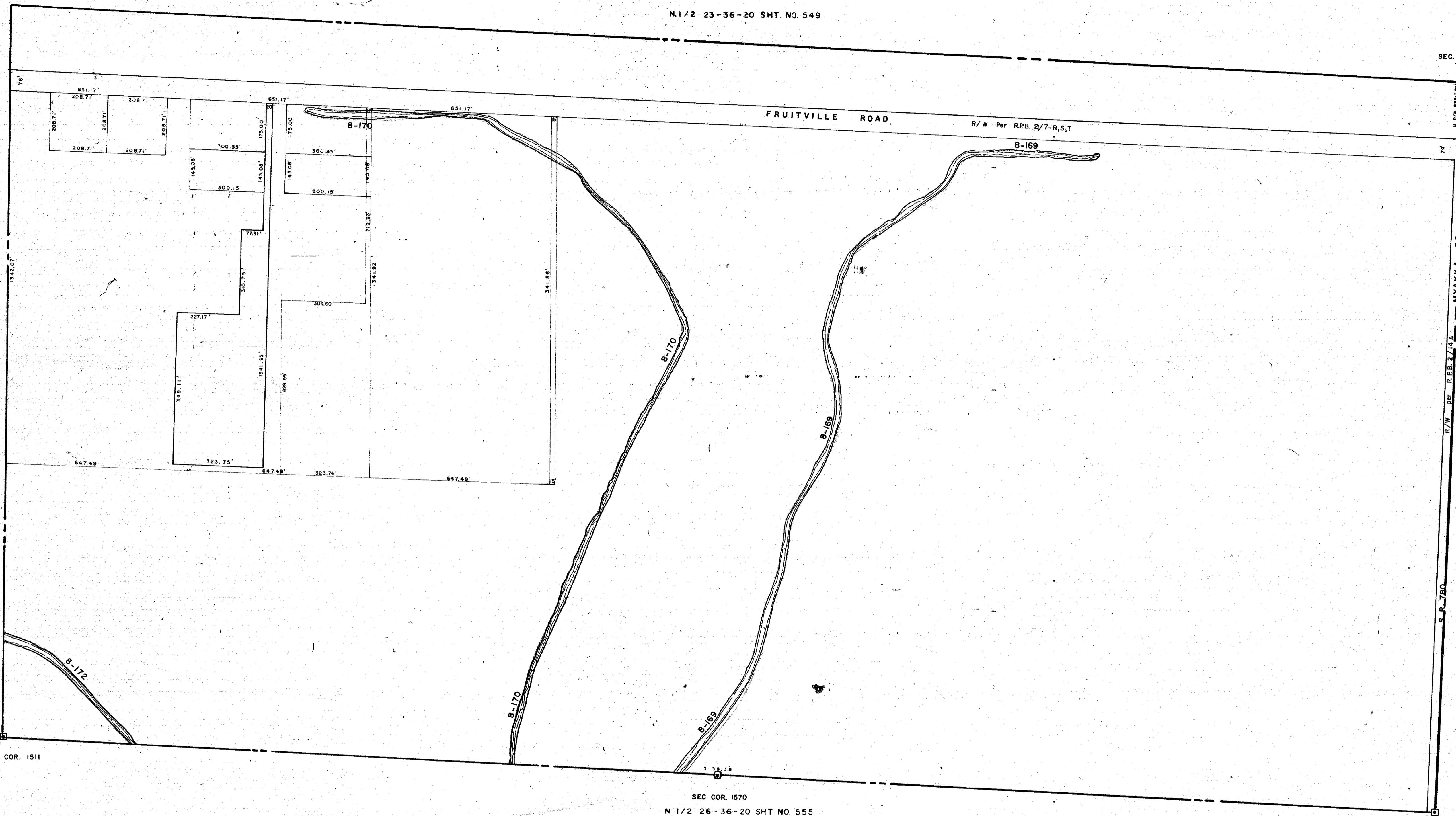
S. 1/2 22-36-20 SHT. NO. 548

S. 1/2 24-36-20 SHT. NO. 552

SEC. COR. 1511

SEC. COR. 1570  
N 1/2 26-36-20 SHT. NO. 555

SEC. COR. 1630



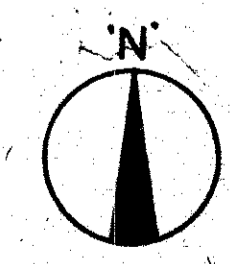
**SUBDIVISION INDEX**  
No. Name

- LEGEND**
- PERM. REF. MON. (for Subs)
  - CONC. MON.
  - IRON PIPE
  - CO. SEC. COR. MON.

DATE	ALTERATIONS DESCRIPTIONS	DRAWN BY
OCT. 1975	SPLITS & REVISIONS	
JULY 1976	SPLIT. O. R. 1099/319 - 320	JNY
NOV. 1982	SECTION CORNERS - DNR'd	JNY
OCT. 1983	R. R. 780 R/W per R.P.B. 2/74	JNY
MAY 1984	Corrected Road Names, FRUITVILLE & MYAKKA, per Memo.	RJJ
SEP. 1987	ADDED CHAINS & NUMBERS	RJJ
JUL. 1990	CORRECTED FRUITVILLE RD. R/W.	RJJ

SARASOTA COUNTY FLORIDA  
SCALE 1"=200' MAY 1970

**S 1/2 SECTION 23  
TWP. 36 S. RNG. 20 E.**



SHT. NO.  
**550**