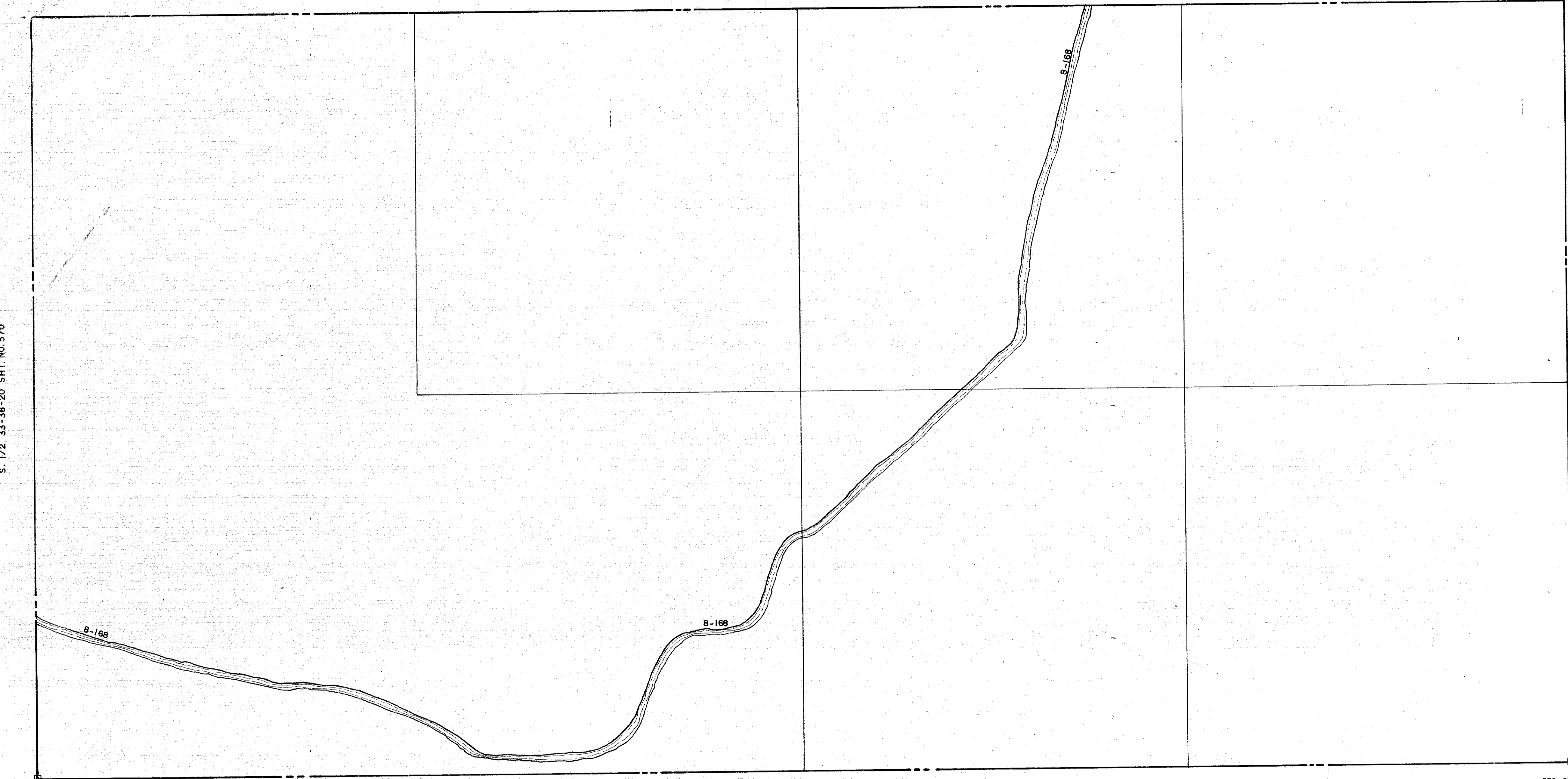


N. 1/2 34-36-20 SHT. NO. 571

S. 1/2 33-36-20 SHT. NO. 570

S. 1/2 35-36-20 SHT. NO. 574



SEC. COR. 1394

SEC. COR. 1515

N. 1/2 3-37-20 SHT. NO. 581

SUBDIVISION INDEX

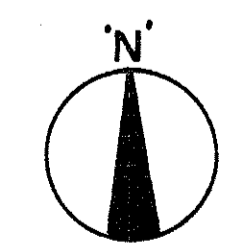
No.	Name

- LEGEND**
- PERM. REF. MON. (for Subs)
 - CONC. MON.
 - IRON PIPE
 - CO. SEC. COR. MON.

ALTERATIONS	
DATE	DESCRIPTIONS
NOV. 1965	Removed Old SECTION CORNERS
SEPT. 1967	ADDED CANAL & CANAL NUMBERS

SARASOTA COUNTY FLORIDA
SCALE 1" = 200' MAY 1970

S 1/2 SECTION 34
TWP. 36 S. RNG. 20E.



SHT. NO.
572