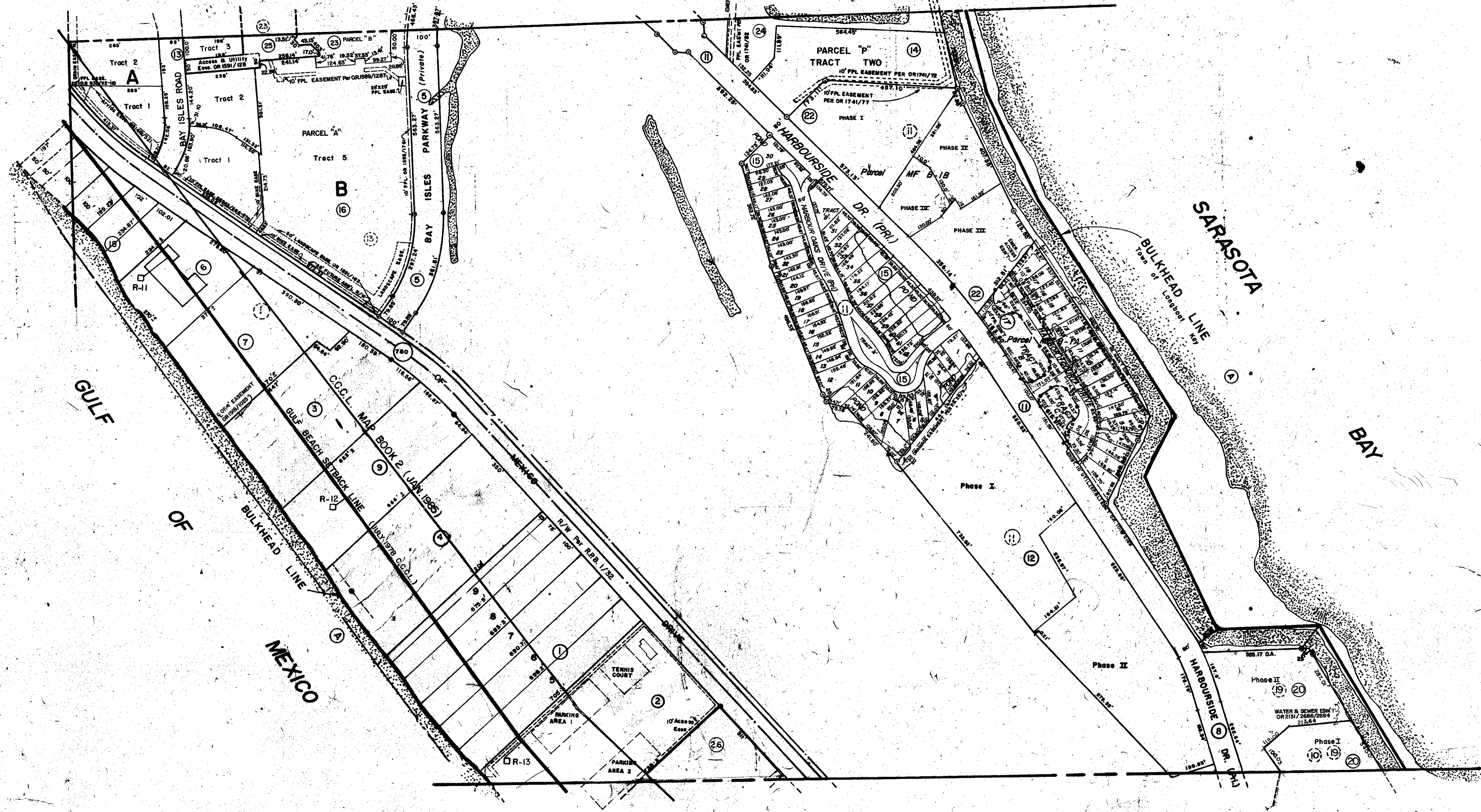


N 1/2 8-36-17 SHT. NO. 6



N 1/2 17-36-17 SHT. NO. 8

26. BENEDICT SUBDIVISION PB36PG41

**SUBDIVISION INDEX**

NO.	Name	Acres
1.	LONGBOAT ACRES	5/46
2.	ISLANDER CLUB OF LONGBOAT CONDO. C.B. 5, 6, 8A, 8B	
3.	ISLANDS WEST CONDO. C.B. 6/4	
4.	SEAGATE CLUB, C.B. 7/1	
5.	BAY ISLES, UNIT 2	24/5, 5A, 5B, 5C
6.	VEINTE CONDOMINIUM C.B. 13/25 A-B	
7.	FOUR WINDS BEACH RESORT CONDO. C.B. 15/46, A-G	
8.	BAY ISLES, UNIT 3, PB. 28/39, A,B	
9.	VERANDA BEACH CLUB, C.B. 19/6	
10.	FAIRWAY BAY, C.B. 19/30	
11.	BAY ISLES UNIT 5	29/9
12.	HARBOUR OAKS C.B. 21/29 CB 24/38	
13.	BAY ISLES, UNIT 4, 30/2-2D (REPLATED Per PB 30/47)	
14.	BAY ISLES, UNIT 6, 30/2B	

**BULKHEAD INDEX**

NO.	Name	Acres
15.	HARBOUR OAKS II, A SUBDIVISION, PB. 30/35, 35A	
16.	BAY ISLES UNIT 9, PB. 30/47-47A (REPLAT OF BAY ISLES, UNIT 4, PB. 30/2)	
17.	HARBOUR COURT SUBDIVISION PB. 31-PG. 41-41A	
18.	LONGBOAT BEACHCOMBER CONDO. C.B. 4/24	
19.	FAIRWAY, BAY III, C.B. 27/11	
20.	FIRST AMENDED PLAT OF FAIRWAY BAY III C.B. 27/36 A-P	
21.	HARBOURSIDE MOORINGS MARINA A CONDO CB 27/39A-E, 27/45 (SEE CB 29/22-22.G)	
22.	MARINA BAY, C.B. 29/6-6E	
23.	BAY ISLES UNIO PB 35/11-11A	
24.	LONGBOAT KEY MOORINGS MARINA, A CONDO CB 29/22-22G	
25.	BAY ISLES, UNIT 11, PB. 35/36-36A	

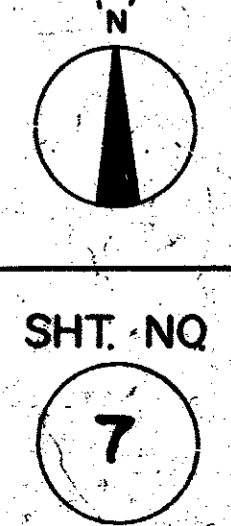
**LEGEND**

- PERM. REF. MON. (for Subs)
- CONC. MON.
- IRON PIPE.

DATE	DESCRIPTION
JUL 1962	ADDED BAY ISLES UNIT 11 PB. 35/36-36A
JUN 1961	ADDED BAY ISLES UNIT 10 PB. 30/47-47A
MAY 1960	ADDED BAY ISLES UNIT 9 PB. 30/47-47A
APR 1960	ADDED BAY ISLES UNIT 8 PB. 30/47-47A
MAR 1960	ADDED BAY ISLES UNIT 7 PB. 30/47-47A
FEB 1960	ADDED BAY ISLES UNIT 6 PB. 30/47-47A
JAN 1960	ADDED BAY ISLES UNIT 5 PB. 29/9
DEC 1959	ADDED BAY ISLES UNIT 4 PB. 30/2-2D
NOV 1959	ADDED BAY ISLES UNIT 3 PB. 28/39, A,B
OCT 1959	ADDED BAY ISLES UNIT 2 PB. 24/5, 5A, 5B, 5C
SEP 1959	ADDED BAY ISLES UNIT 1 PB. 30/2-2D
AUG 1959	ADDED BAY ISLES UNIT 10 PB. 30/47-47A
JUL 1959	ADDED BAY ISLES UNIT 9 PB. 30/47-47A
JUN 1959	ADDED BAY ISLES UNIT 8 PB. 30/47-47A
MAY 1959	ADDED BAY ISLES UNIT 7 PB. 30/47-47A
APR 1959	ADDED BAY ISLES UNIT 6 PB. 30/47-47A
MAR 1959	ADDED BAY ISLES UNIT 5 PB. 29/9
FEB 1959	ADDED BAY ISLES UNIT 4 PB. 30/2-2D
JAN 1959	ADDED BAY ISLES UNIT 3 PB. 28/39, A,B
DEC 1958	ADDED BAY ISLES UNIT 2 PB. 24/5, 5A, 5B, 5C
NOV 1958	ADDED BAY ISLES UNIT 1 PB. 30/2-2D
OCT 1958	ADDED BAY ISLES UNIT 10 PB. 30/47-47A
SEP 1958	ADDED BAY ISLES UNIT 9 PB. 30/47-47A
AUG 1958	ADDED BAY ISLES UNIT 8 PB. 30/47-47A
JUL 1958	ADDED BAY ISLES UNIT 7 PB. 30/47-47A
JUN 1958	ADDED BAY ISLES UNIT 6 PB. 30/47-47A
MAY 1958	ADDED BAY ISLES UNIT 5 PB. 29/9
APR 1958	ADDED BAY ISLES UNIT 4 PB. 30/2-2D
MAR 1958	ADDED BAY ISLES UNIT 3 PB. 28/39, A,B
FEB 1958	ADDED BAY ISLES UNIT 2 PB. 24/5, 5A, 5B, 5C
JAN 1958	ADDED BAY ISLES UNIT 1 PB. 30/2-2D

SARASOTA COUNTY FLORIDA  
SCALE 1" = 200'  
AUG. 1963

S 1/2 SECTION 8  
TWP. 36 S. RNG. 17 E



SHT. NO

7