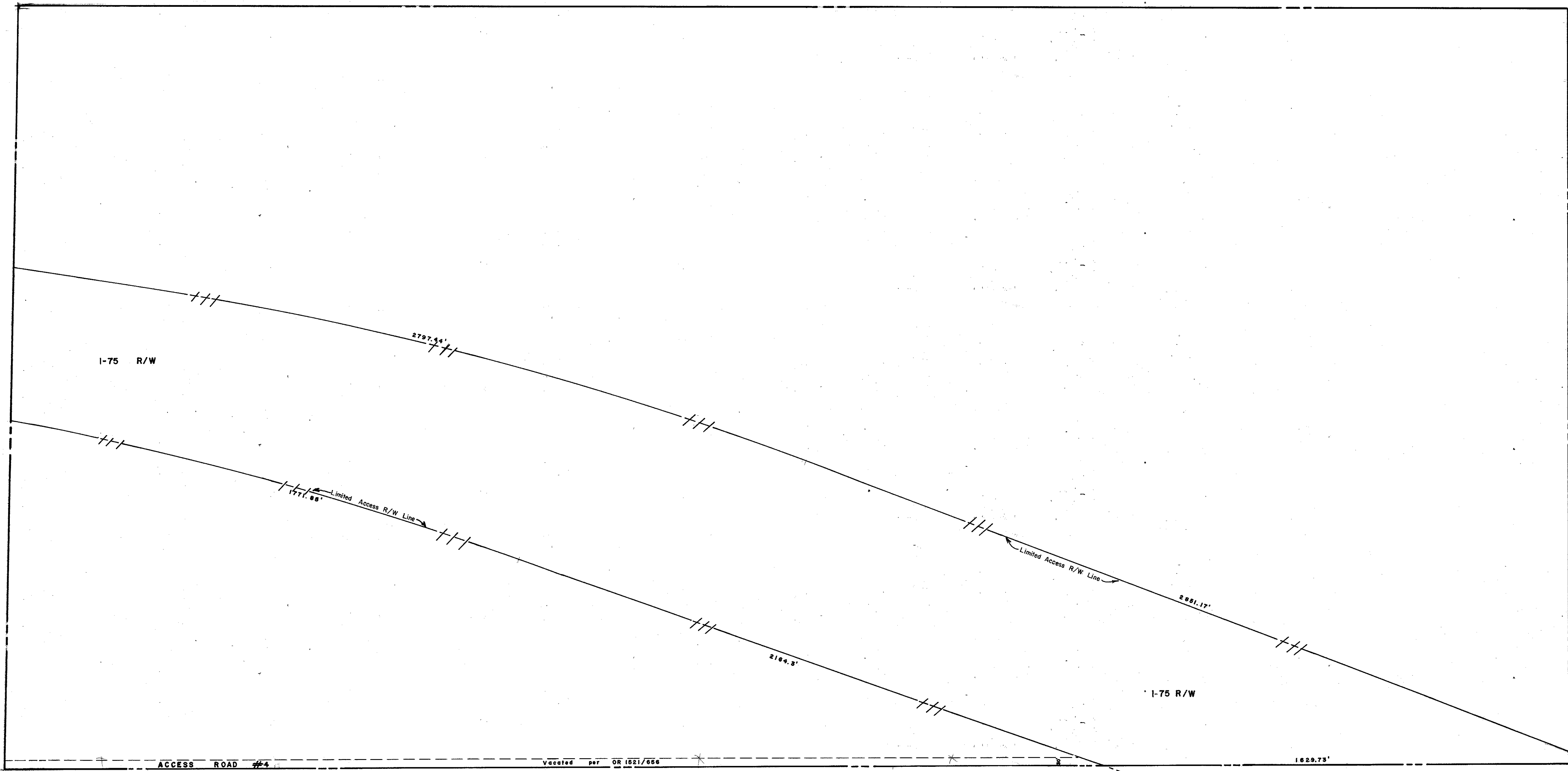


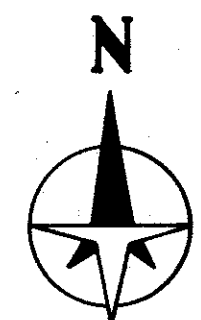
N 1/2 4-39-20 SHT. NO. 727

S 1/2 3-39-20 SHT. NO. 730

S 1/2 5-39-20 SHT. NO. 726



N 1/2 9-39-20 SHT. NO. 737



LEGEND

- County Section Corner Monument
- ⊕ County Bench Mark
- D.O.T. Limited Access R/W
- ① Subdivision Index Number

REVISIONS	
DATE	DESCRIPTION
FEB. 1977	I-75, By Order of Taking
DEC. 1978	MAP REVISION
MAY 1982	Added additional I-75 R/W per D.O.T. parcel 102
JUL 1982	Vacated ACCESS ROAD #4 per OR 1521/658
JAN. 1985	Added D.O.T. Limited Access I-75 R/W
OCT. 1985	CORRECTED WEST SECTION LINE

SARASOTA COUNTY, FLORIDA

Scale: 1" = 200' Date: Dec. 1981 Drawn By: GMT

S. 1/2 Section 4
Twp. 39 S. Rge. 20 E.

Sheet No.

728