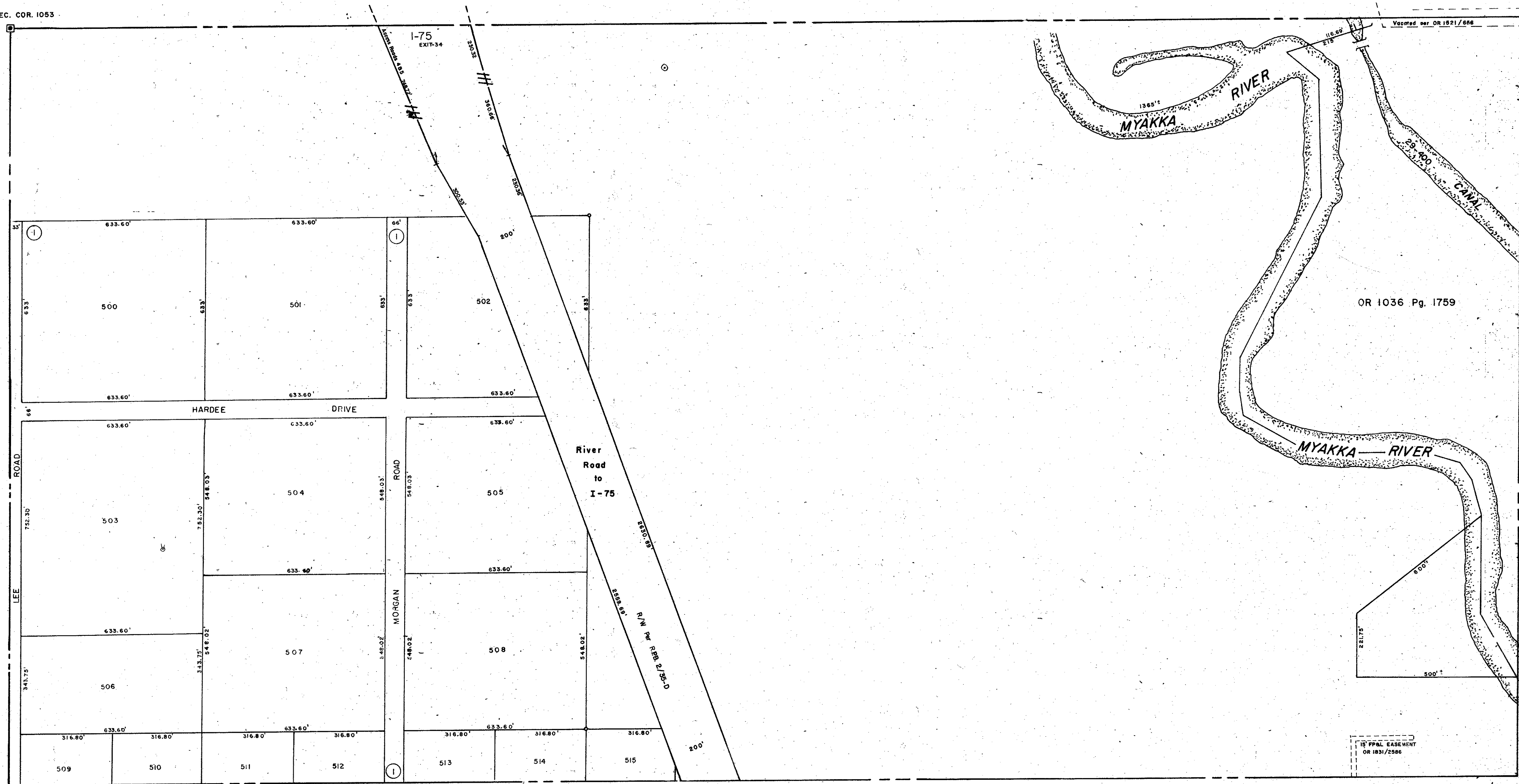


SEC. COR. 1053

I-75 ACCESS RD #4

N. 1/2 12-39-19 Sht. No. 417

N. 1/2 8-39-20, Sht. No. 735



SUBDIVISION INDEX

S. 1/2 7-39-20, Sht. No. 734

I. East Venice Farms, 3/7

LEGEND

- D.O.T. Limited Access R/W
- ⊠ County Section Corner Monument
- ⊙ County Bench Mark
- Permanent Ref. Mon. for Subs.
- ① Subdivision Index Number

DATE	REVISIONS	DESCRIPTION	BY
MAY 1977	PARCEL 122, I-75 & Access Road		GWA
APR 1982	Added SECTION CORNER		JNY
MAY 1982	Clerified I-75 per D.O.T.		JNY
JUL 1982	Vacated ACCESS ROAD No. 4 per OR 1821/666		JNY
JAN 1985	Added D.O.T. Limited Access I-75 R/W		RLM
MAR 1985	15' FPAL EASEMENT OR 1831/2586		RSM
MAY 1985	ADDED BEACH MARK NUMBERS		SCB
FEB 1985	ADDED I-75 EXIT NO.		SCB

SARASOTA COUNTY, FLORIDA

Scale: 1" = 200' Date: July 1976
Drawn By: R.G. Black

N. 1/2 Section 7
Twp. 39 S. - Rge. 20 E

Sheet No.

733

