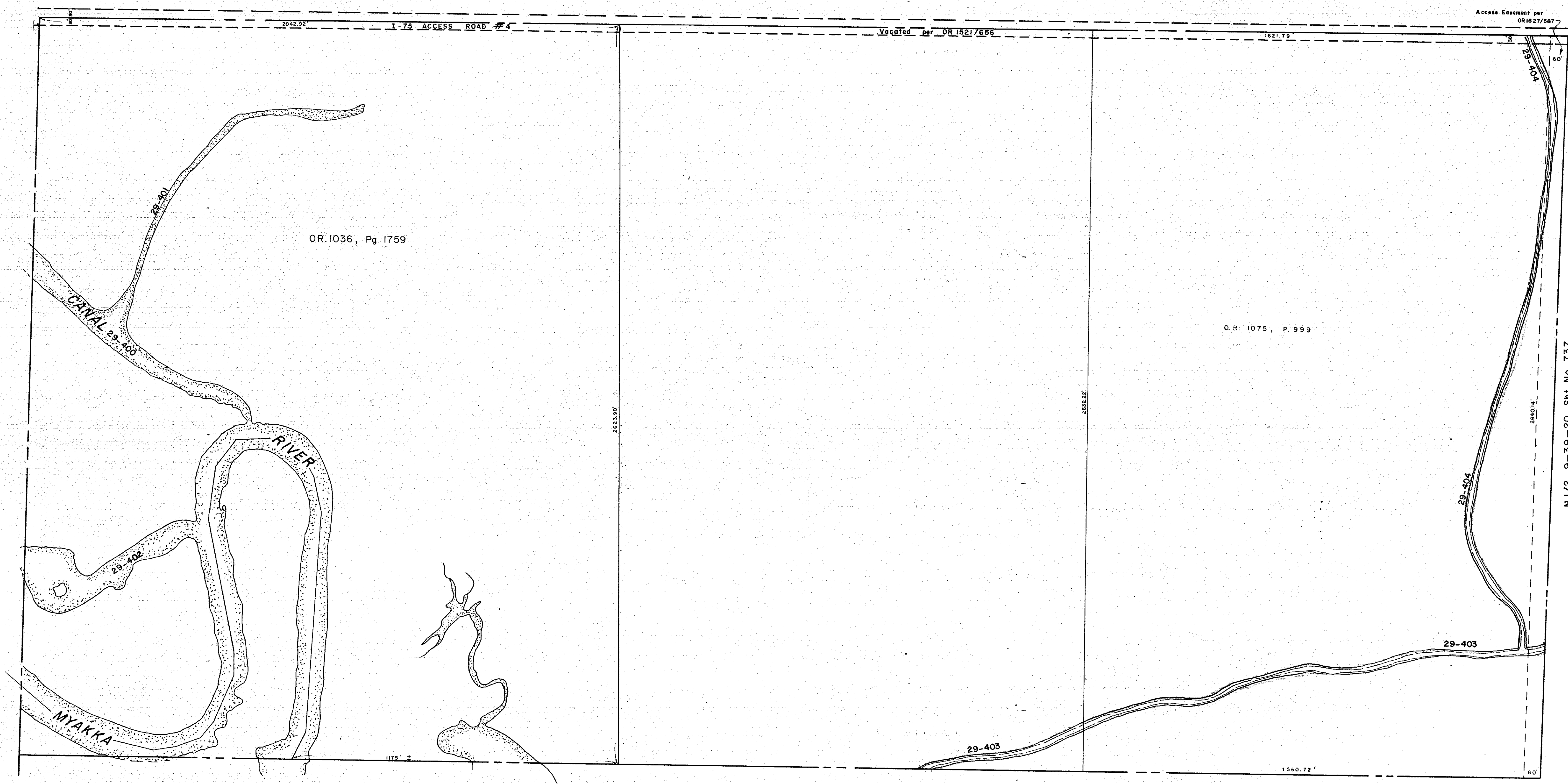


N 1/2 7-39-20, Sht. No. 733

N 1/2 9-39-20, Sht. No. 737



- LEGEND
- ▣ Section Corner Monument
  - Permanent Reference Monument
  - Reference Point for Subdivisions
  - ① Subdivision Index Number

REVISIONS	
DATE	DESCRIPTION
April 1975	Redrawn & Split OR. 1036, Pg. 1759
Jan. 1975	Ext. Line of Sec. & O. R. 1075 / 999
July 1982	Vacated ACCESS ROAD No. 4 per OR 1621/656
Aug. 1982	Access Easement per OR 1627/667
OCT. 1985	Corrected East Section line
Jan. 1986	ADDED DRAINAGE DITCH

**SARASOTA COUNTY, FLORIDA**

Scale: 1" = 200' Date: April, 1975

Drawn By: J.M.M.

N. 1/2 Section 8  
Twp. 39 S. - Rge. 20E.

Sheet No.  
735