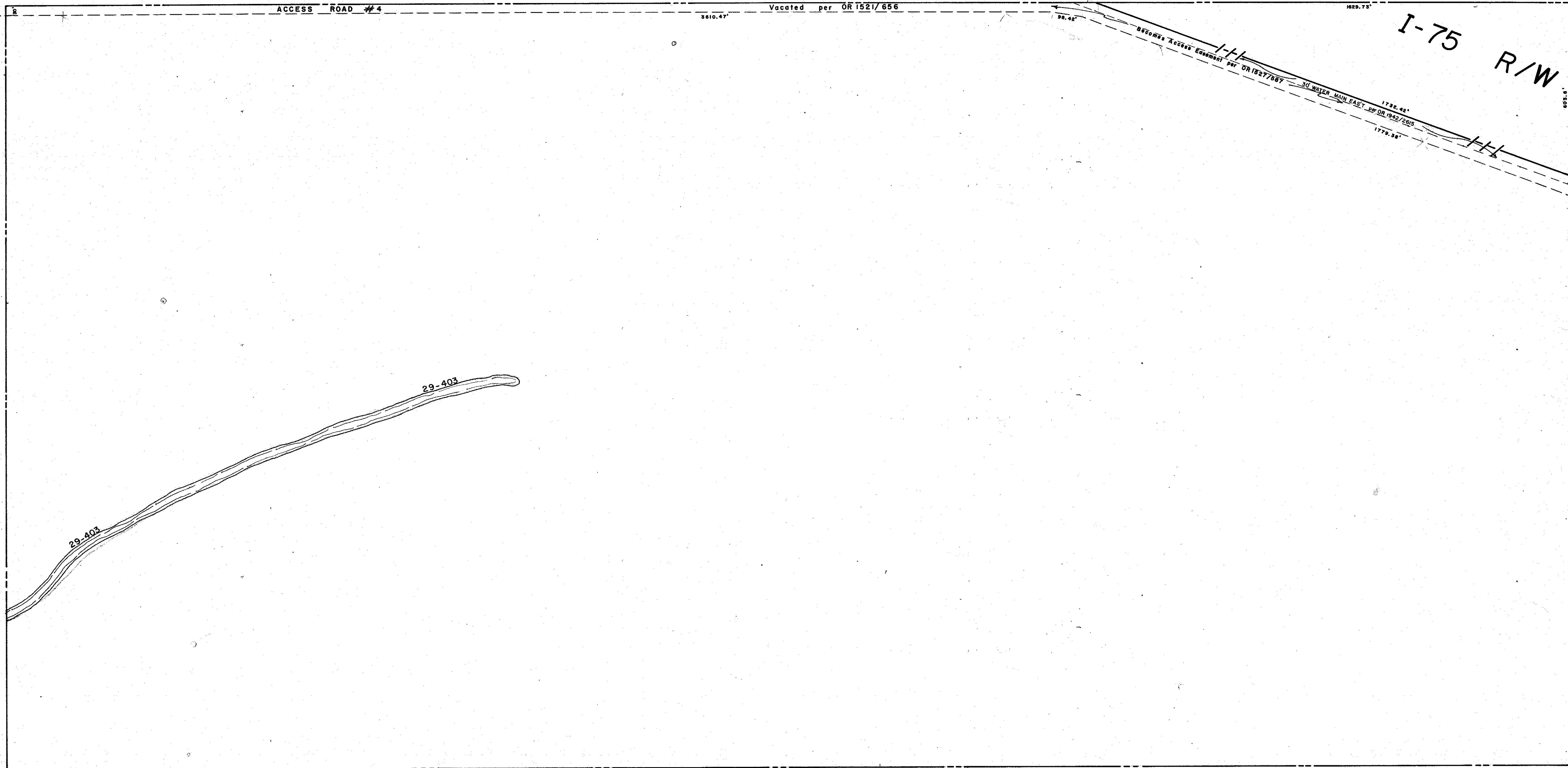


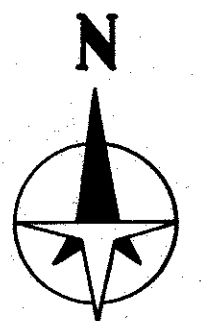
S. 1/2 4-39-20, Sht. No. 728

N. 1/2 8-39-20, Sht. No. 735

N. 1/2 10-39-20, Sht. No. 739



S. 1/2 9-39-20, Sht. No. 738



**LEGEND**

- D.O.T Limited Access R/W
- ☐ County Section Corner Monument
- ⊙ County Bench Mark
- Permanent Ref. Mon. for Subs.
- ① Subdivision Index Number

REVISIONS	
DATE	DESCRIPTION
SEPT 1979	Added I-75 R/W per State R/W maps
MAY 1982	Added additional I-75 R/W per D.O.T. parcel 103
JUL 1982	Vacated ACCESS ROAD #4 per OR 1521/656
AUG. 1982	ACCESS EASEMENT per OR 1827/687
JAN. 1982	ADDED LIMITED ACCESS I-75 R/W
JUNE 1987	WATER MAIN EASMT (30) per OR 1862/2615
JAN 1988	ADDED DRAINAGE DITCH & NUMBERS

**SARASOTA COUNTY,  
FLORIDA**

Scale: 1" = 200' Date: May 1972  
 Drawn By: J.M.M.

**N. 1/2 Section 9  
Twp. 39 S. - Rge. 20 E.**

Sheet No.  
**737**