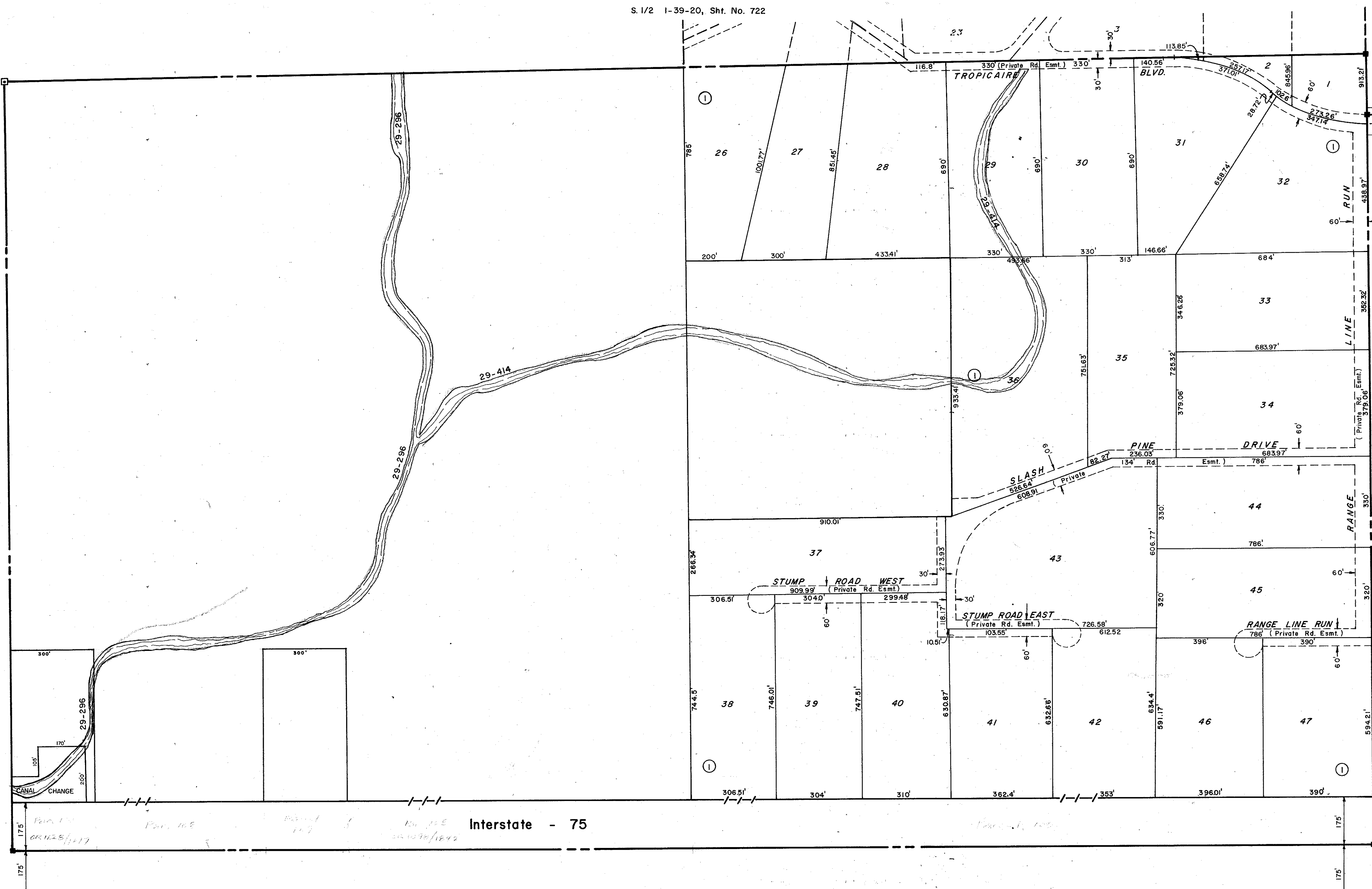


S. 1/2 1-39-20, Sht. No. 722

N. 1/2 11-39-20, Sht. No. 741

N. 1/2 7-39-21, Sht. No. 949



SUBDIVISION INDEX
 I. WOODLAND ESTATES P.B. 25/41, A-D

S. 1/2 12-39-20, Sht. No. 744

LEGEND:

- County Section Corner Monument
- ⊕ County Bench Mark
- Permanent Ref. Mon. for Subs.
- ⓪ Subdivision Index Number

REVISIONS	
DATE	DESCRIPTION
DEC. 1978	ADDED WOODLAND ESTATES P.B. 25/41, A-D
FEB. 1988	ADDED DRAINAGE DITCHES & NUMBERS

SARASOTA COUNTY, FLORIDA

Scale: 1" = 200' Date: APRIL 1978
 Drawn By: G.W. ACKERMAN

N. 1/2 Section 12
 Twp. 39 S., Rge. 20 E.

Sheet No.

743