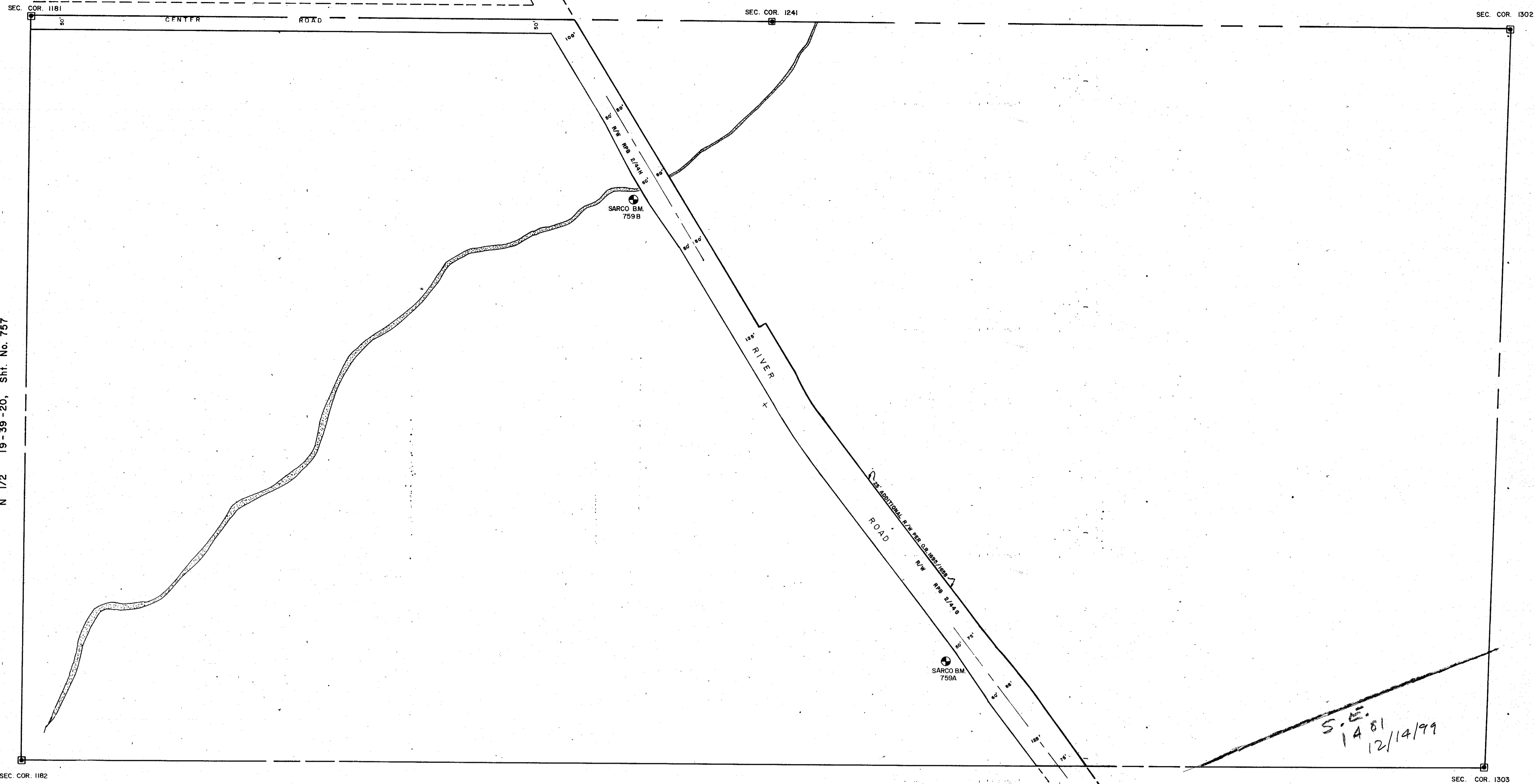


S-1/2 17-39-20, SHT. 754



N 1/2 19-39-20, Sht. No. 757

N 1/2 21-39-20, Sht. No. 761

S 1/2 20-39-20, Sht. No. 760

LEGEND

- Section Corner Monument
- Permanent Reference Monument
- Reference Point For Subdivisions
- ① Subdivision Index Number
- ▨ Drainage
- ▩ County Property

REVISIONS	
DATE	DESCRIPTION
JUL. 1976	REVISED R/W CENTER RD. O.R. 339 P. 291
APR. 1982	RIVER RD. R/W. P.P. D.O.T. 17502-2902
JUN. 1983	RIVER RD. P.P. R.S.B. 2/44H
JUL. 1984	RIVER RD. R/W. O.R. 1650/1658
DEC. 1985	ADDED BENCH MARKS SARCO 759A & 759B P.P. D.O.T.

SARASOTA COUNTY, FLORIDA

Scale: 1" = 200' Date: March 1976
 Drawn By: D. Nichols

N 1/2 Section 20.
 Twp. 39 S. Rge. 20E.

Sheet No.

759

