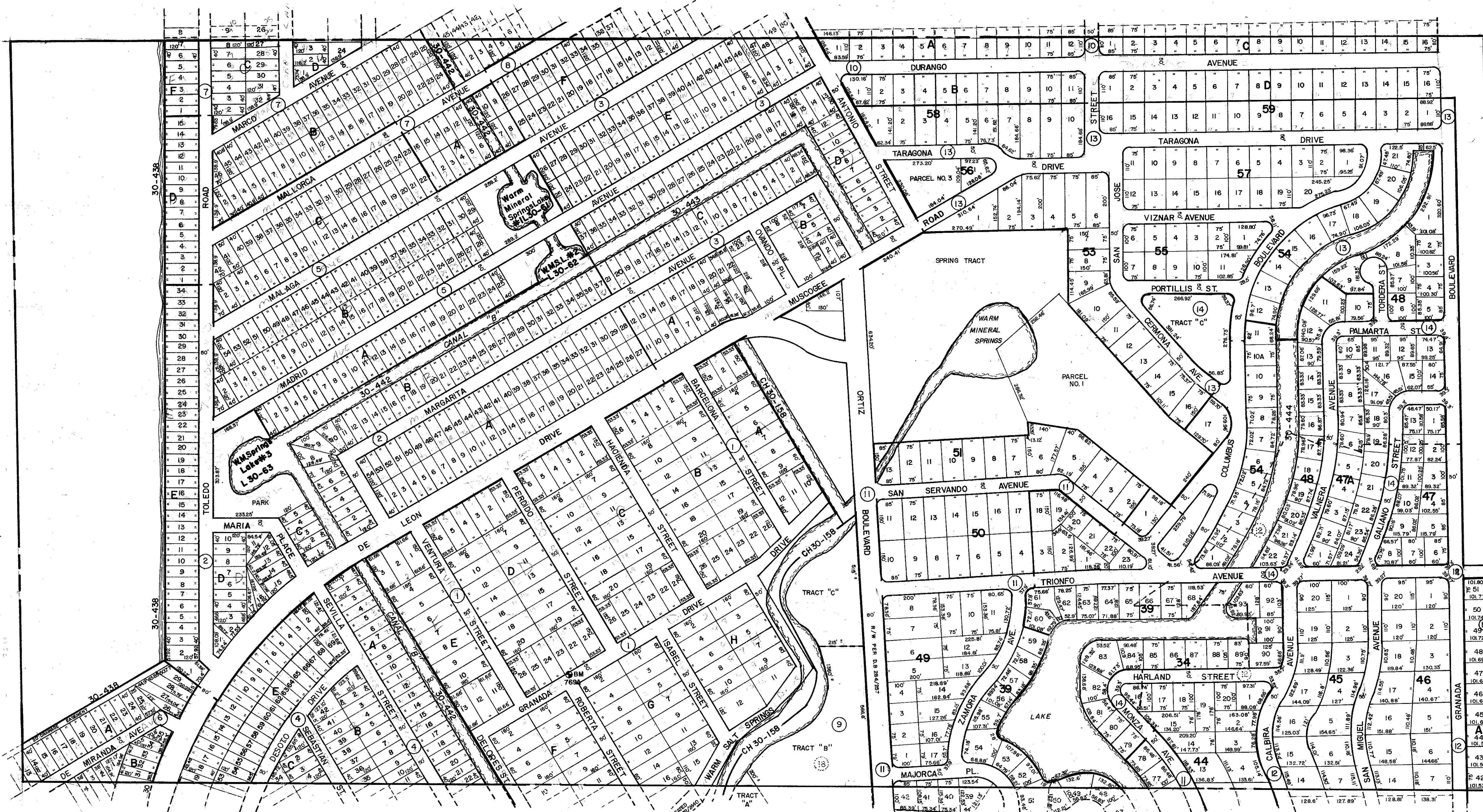


N 1/2 26-39-20 SHT. NO. 771

N 1/2 30-39-21 SHT. NO. 995



**SUBDIVISION INDEX**

No.	Name	4/56	7/83
1.	WARM SPRINGS	4/56	7/83
2.	WARM MINERAL SPRINGS UNIT NO. 51		8/12
3.	"		8/12
4.	"		7/84
5.	"		53
6.	"		7/90
7.	"		8/13
8.	"		61
9.	"		8/46
10.	"		8/47
11.	"		81
12.	"		9/8
13.	"		10/82F
14.	"		10/82E
15.	"		87
16.	"		88
17.	"		10/49H
18.	"		79
19.	"		86
20.	"		87
21.	"		88
22.	"		89
23.	"		10/89-89A
24.	"		17/4
25.	"		8/98
26.	"		64

A REPLAT OF UNITS 86,87 & 88

- Indicates Original Subdivision Boundary
- ⊠ County Section Corner Monument
- ⊙ County Bench Mark
- ⊕ Permanent Ref. Mon. for Subs.
- ① Subdivision Index Number

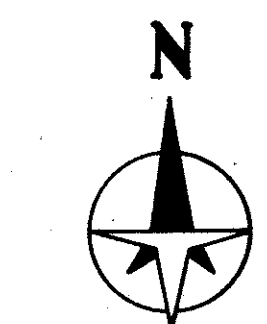
**REVISIONS**

DATE	DESCRIPTION	BY
JAN 1978	ADDED TRIONFO AVE. DB 654/207	JAN
MAY 1980	REPLATED A PORTION OF WARM MINERAL SPRINGS DR. OR 1852/2440	WFM
JULY 1987	REPLATED A PORTION OF WARM MINERAL SPRINGS DR. OR 1852/2440	RAK
JAN 1988	ADDED R/W 769A	RAK
FEB 1988	ADDED DRAINAGE DITCH NUMBERS	RAK
MAY 1988	ADDED R/W ORTIZ BLVD. DB 284/257	RAK
JULY 1988	ADDED UNDERLYING PLATS WARM MINERAL SPRINGS	RAK

**SARASOTA COUNTY, FLORIDA**

Scale: 1" = 200' Date: JULY 1987  
Drawn By: BAG, RAK & CAR

**N 1/2 SECTION 25  
TWP. 39S. RNG. 20E.**



Sheet No. **769**