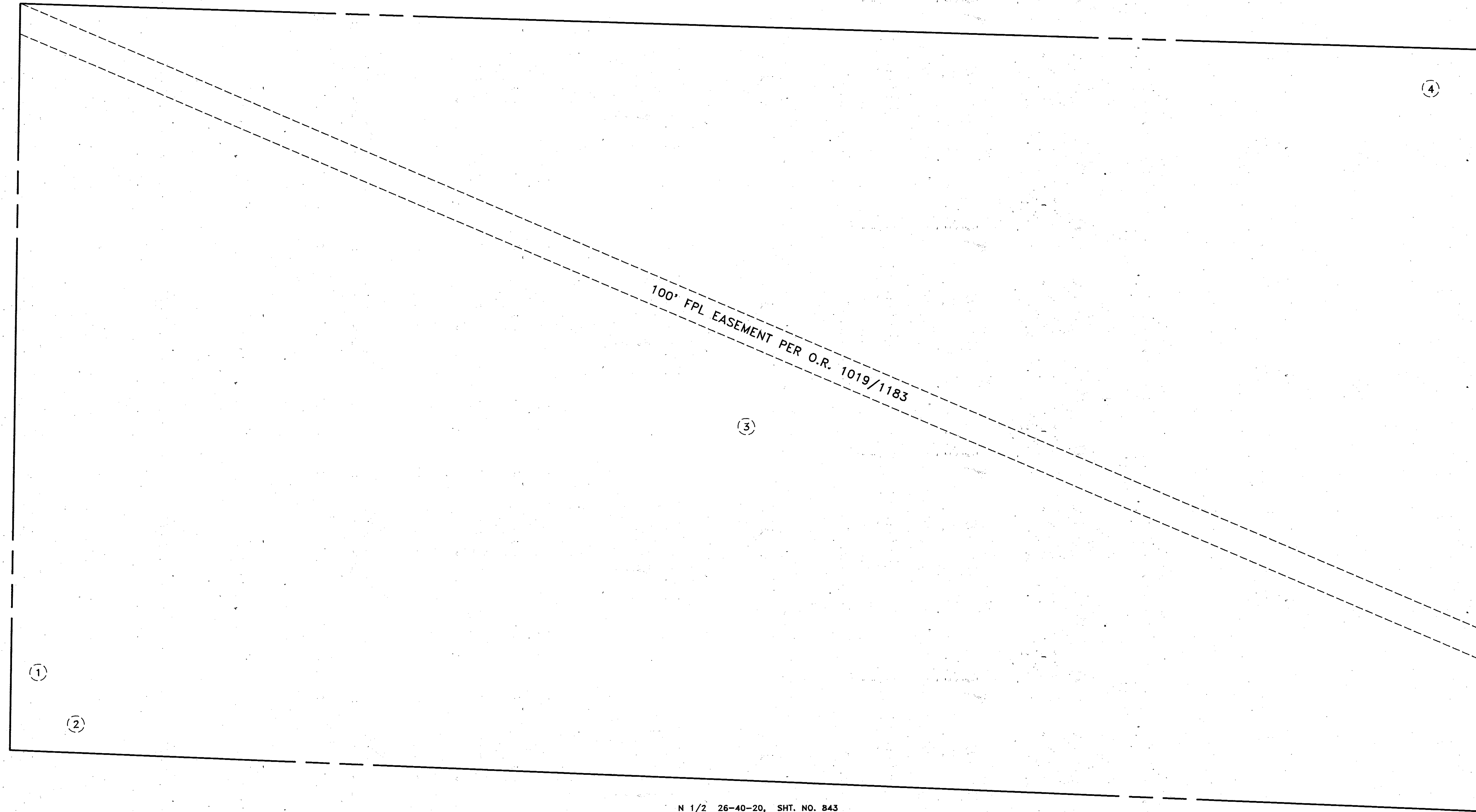


N 1/2 23-40-20, SHT. NO. 837

S 1/2 22-40-20, SHT. NO. 836

S 1/2 24-40-20, SHT. NO. 840

N 1/2 26-40-20, SHT. NO. 843



SUBDIVISION INDEX

- 1. MYAKKA ESTATES, UNIT 5, P.B. 29/1 (VACATED)
- 2. MYAKKA ESTATES, UNIT 7, P.B. 29/4 (VACATED)
- 3. MYAKKA ESTATES, UNIT 9, P.B. 30/10 (VACATED)
- 4. MYAKKA ESTATES, UNIT 8, P.B. 30/9 (VACATED)

ALL VACATED 9/14/92, CITY RESO. 92-R-27, ORB 2438/1431

LEGEND:

- ▣ County Section Corner Monument
- County Bench Mark
- Permanent Ref. Mon. For Subs.
- ① Subdivision Index Number

REVISIONS	
DATE	DESCRIPTION

SARASOTA COUNTY, FLORIDA

Scale: 1"=200' Date: NOV. 1992
Drawn By: K.A.M.

S 1/2 SECTION 23
TWP. 40 S, RGE. 20 E

Sheet No.

838

