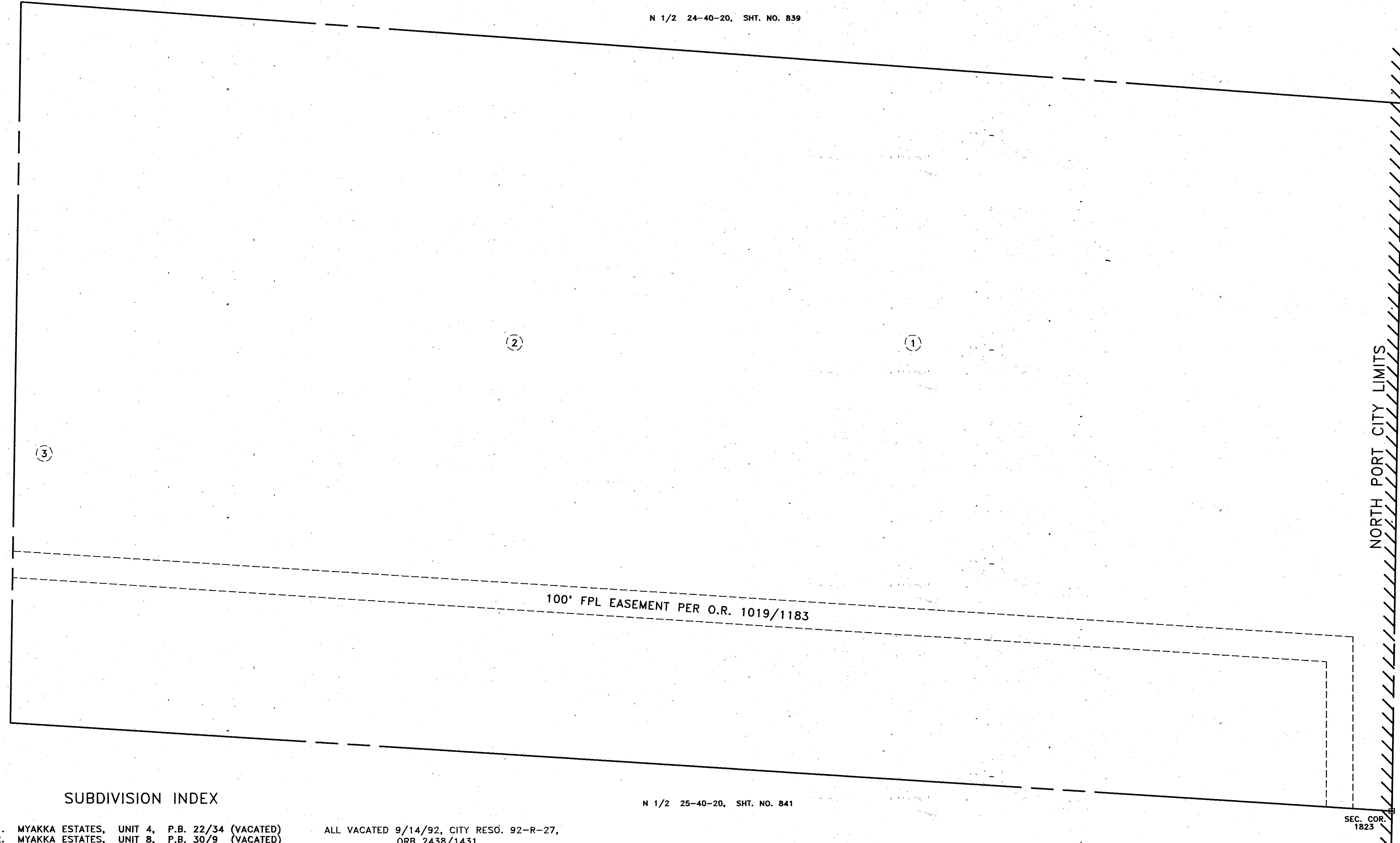


N 1/2 24-40-20, SHT. NO. 839

S 1/2 25-40-20, SHT. NO. 838



100' FPL EASEMENT PER O.R. 1019/1183

NORTH PORT CITY LIMITS

CHARLOTTE COUNTY

N 1/2 25-40-20, SHT. NO. 841

SUBDIVISION INDEX

- 1. MYAKKA ESTATES, UNIT 4, P.B. 22/34 (VACATED)
- 2. MYAKKA ESTATES, UNIT 8, P.B. 30/9 (VACATED)
- 3. MYAKKA ESTATES, UNIT 9, P.B. 30/10 (VACATED)

ALL VACATED 9/14/92, CITY RESO. 92-R-27, ORB 2438/1431

LEGEND:

- ▣ County Section Corner Monument
- County Bench Mark
- Permanent Ref. Mon. For Subs.
- ① Subdivision Index Number

REVISIONS	
DATE	DESCRIPTION

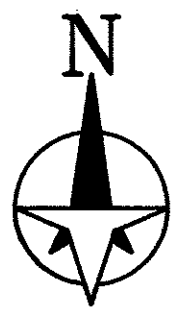
SARASOTA COUNTY, FLORIDA

Scale: 1"=200' Date: NOV. 1992
Drawn By: K.A.M.

S 1/2 SECTION 24
TWP. 40 S, RGE. 20 E

Sheet No.

840



SEC. COR. 1823