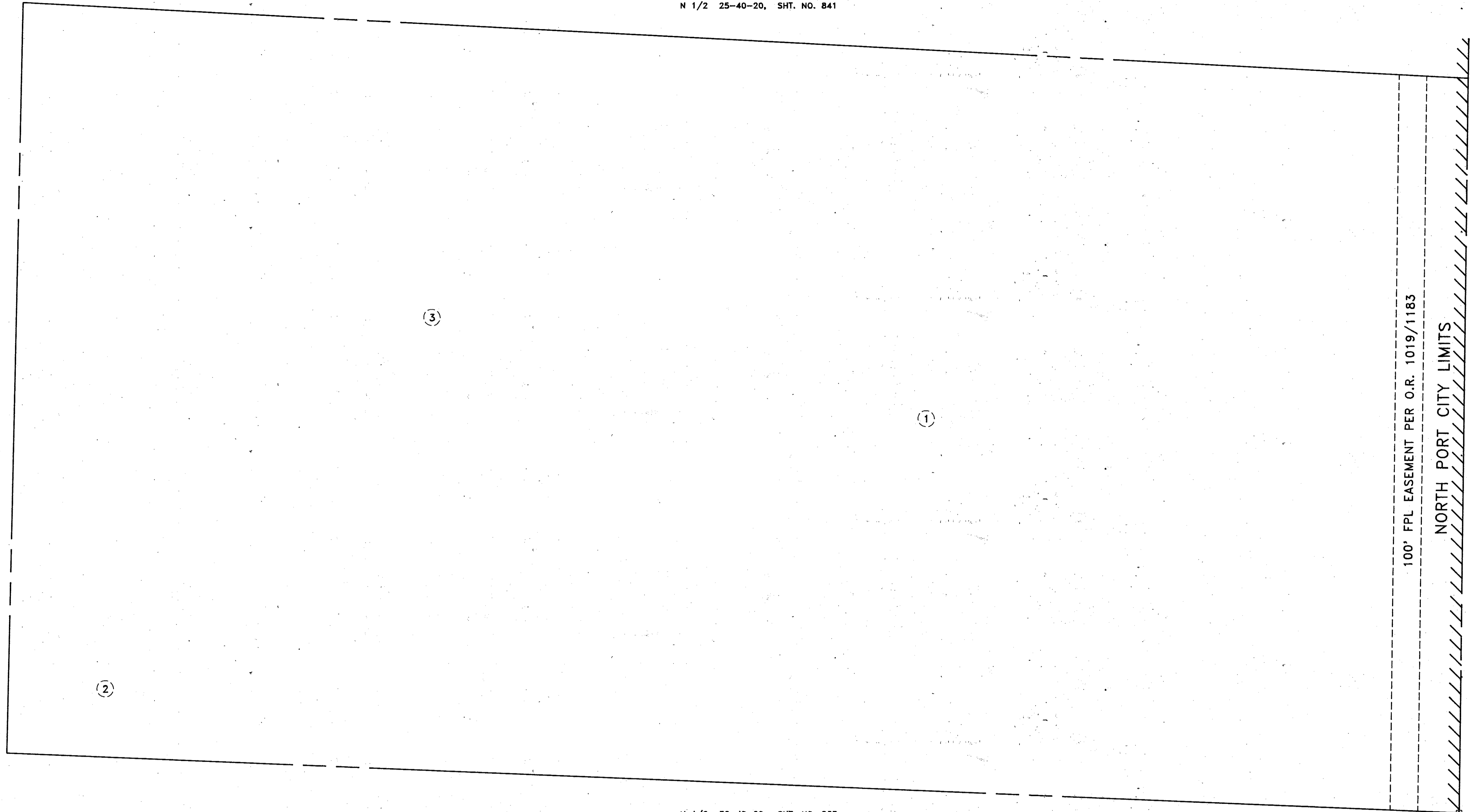


N 1/2 25-40-20, SHT. NO. 841

S 1/2 26-40-20, SHT. NO. 844



N 1/2 36-40-20, SHT. NO. 863

**SUBDIVISION INDEX**

- 1. MYAKKA ESTATES, UNIT 1, P.B. 22/31 (VACATED)
- 2. MYAKKA ESTATES, UNIT 6, P.B. 29/2 (VACATED)
- 3. MYAKKA ESTATES, UNIT 7, P.B. 29/4 (VACATED)

ALL VACATED 9/14/92, CITY RESO. 92-R-27,  
ORB 2438/1431

**LEGEND:**

- ▣ County Section Corner Monument
- ⊙ County Bench Mark
- Permanent Ref. Mon. For Subs.
- ① Subdivision Index Number

REVISIONS	
DATE	DESCRIPTION

**SARASOTA COUNTY,  
FLORIDA**

Scale: 1"=200' Date: NOV. 1992  
Drawn By: K.A.M.

**S 1/2 SECTION 25  
TWP. 40 S, RGE. 20 E**

Sheet No.

842

