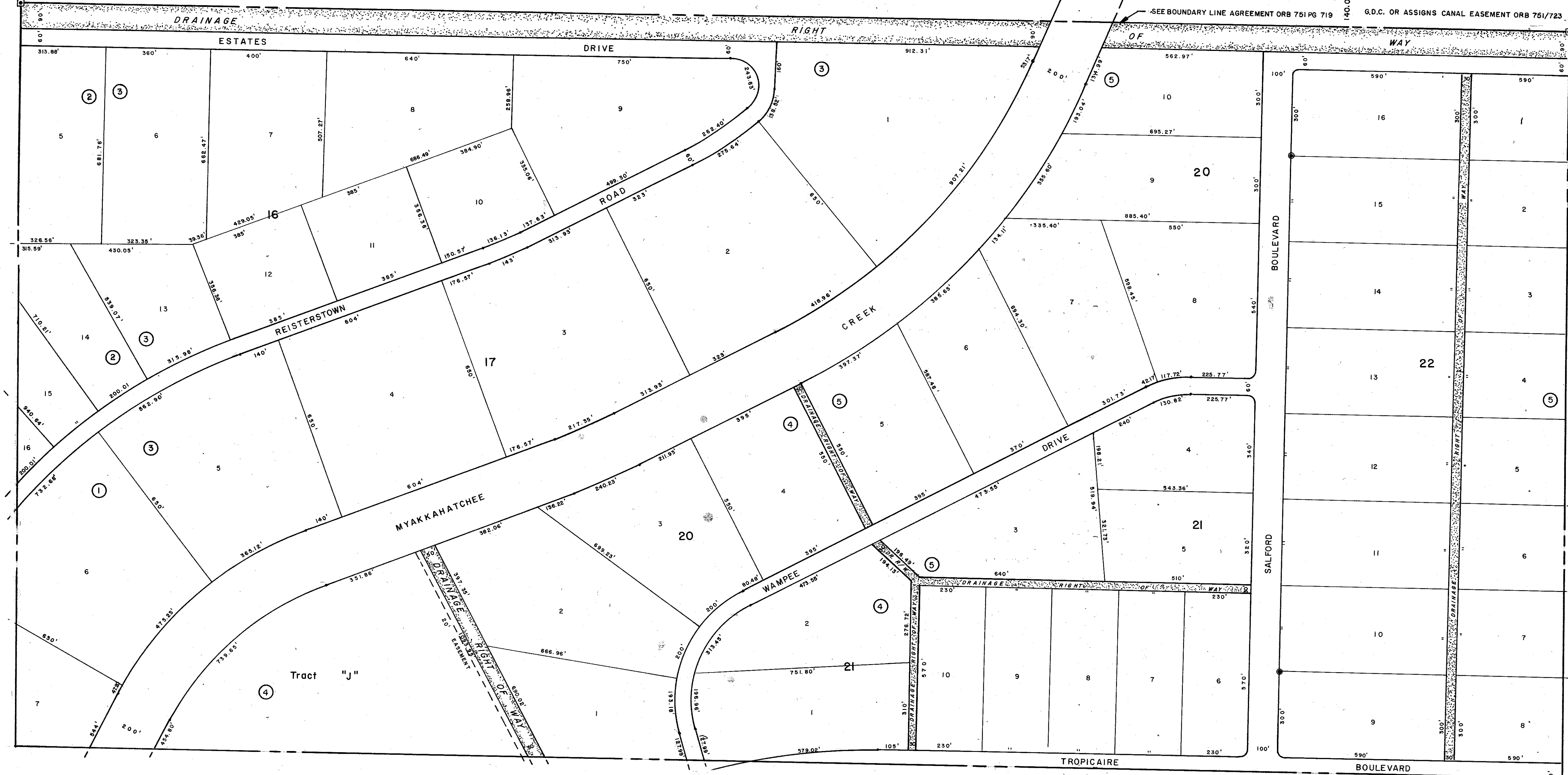


SECOR. 1965



**SUBDIVISION INDEX**

1	North	Port	Charlotte	Estates,	1st. Add.	19/29 H
2	"	"	"	"	"	19/29 I
3	"	"	"	"	"	19/29 J
4	North	Port	Charlotte	Estates,	2nd Add.	19/44 B
5	"	"	"	"	"	19/44 C

**LEGEND**

- Section Corner Monument
- Permanent Reference Monument
- Reference Point for Subdivisions
- ① Subdivision Index Number
- ▨ Drainage

REVISIONS	
DATE	DESCRIPTION
APRIL 1991	ADDED BOUNDARY AGREEMENT & CANAL ESM'S OR 751/719 & 751/723 JFJ

**SARASOTA COUNTY, FLORIDA**

Scale: 1" = 200' Date: Oct., 1974

Drawn By: J.M.M.

N. 1/2 Section 3  
Twp. 39 S.-Rge. 21 E.

Sheet No.  
**941**

