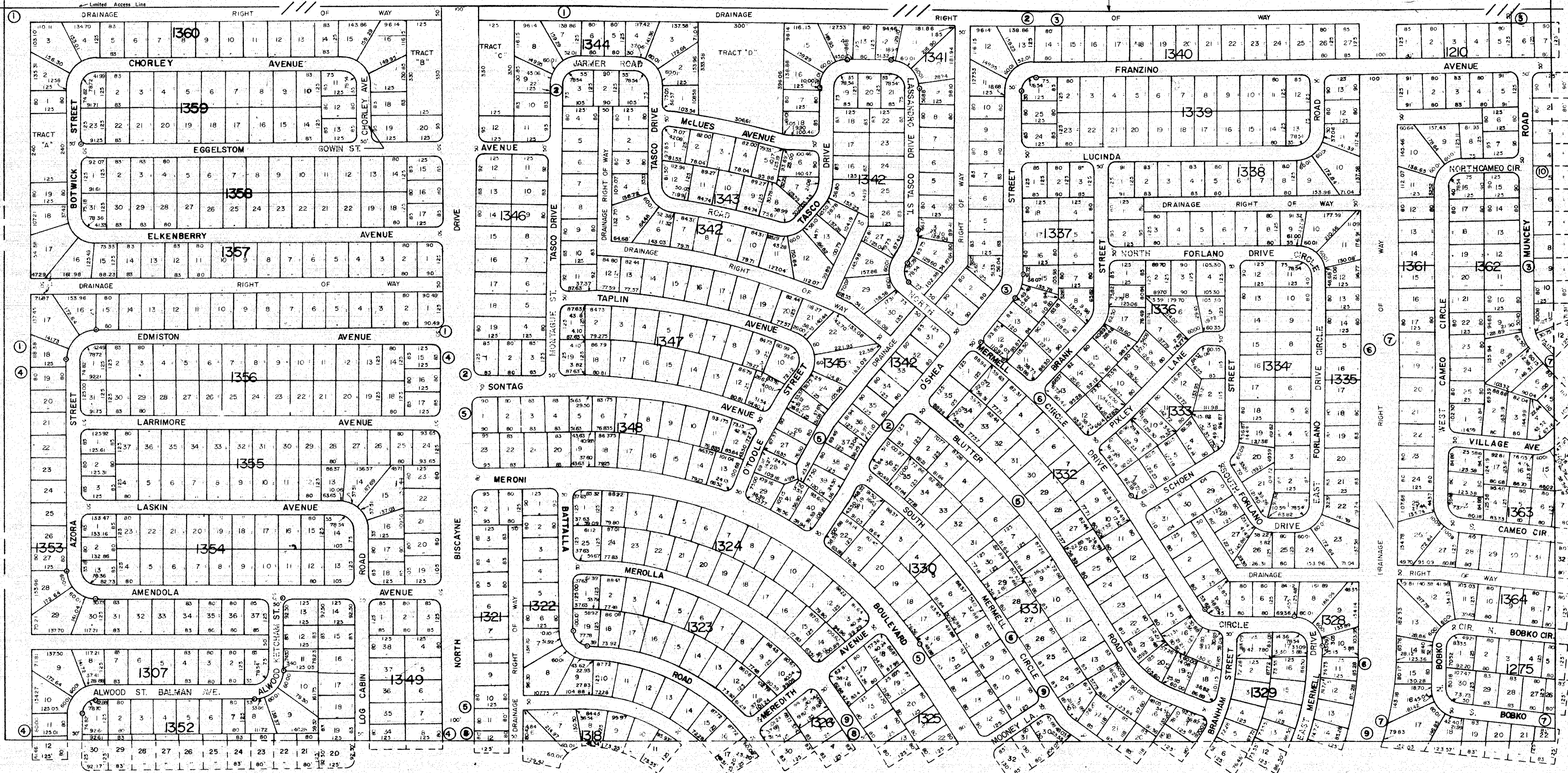


I-75

N 1/2 7-39-21 SHT NO.949

R/W



N 1/2 18-39-21 SHT NO.971

S 1/2 8-39-21 SHT NO.952

SUBDIVISION INDEX

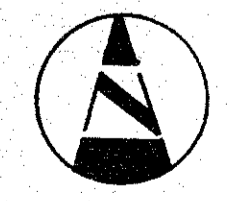
| No | Name | 26th ADD | 15/3A |
|----|--------------------|----------|-------|
| 1 | PORT CHARLOTTE SUB | 15/3A | |
| 2 | " | 15/3B | |
| 3 | " | 15/3C | |
| 4 | " | 15/3D | |
| 5 | " | 15/3E | |
| 6 | " | 15/3F | |
| 7 | " | 15/3G | |
| 8 | " | 15/3I | |
| 9 | " | 15/3J | |
| 10 | | 27th | 15/1F |

- LEGEND
- PERM. REF. MON (for Subs)
 - CONC MON
 - IRON PIPE
 - CO. SEC. COR. MON.
 - CO. BENCH MARK

| DATE | ALTERATIONS | DESCRIPTION |
|-----------|---------------------------------------|-------------|
| JULY 1968 | ADDED PORT CHARLOTTE 26th ADC. | SEB |
| FEB. 1961 | Added I-75 R/W PER SRD MASS | SDS |
| JULY 1960 | CHANGED STREET NAMES PER O.R. 2045/65 | |

SARASOTA COUNTY FLORIDA
 SCALE: 1" = 200
 JULY 1968

S. 1/2 SECTION 7.
 TWP. 39 S. RNG. 21 E.



SHT. NO.
 950