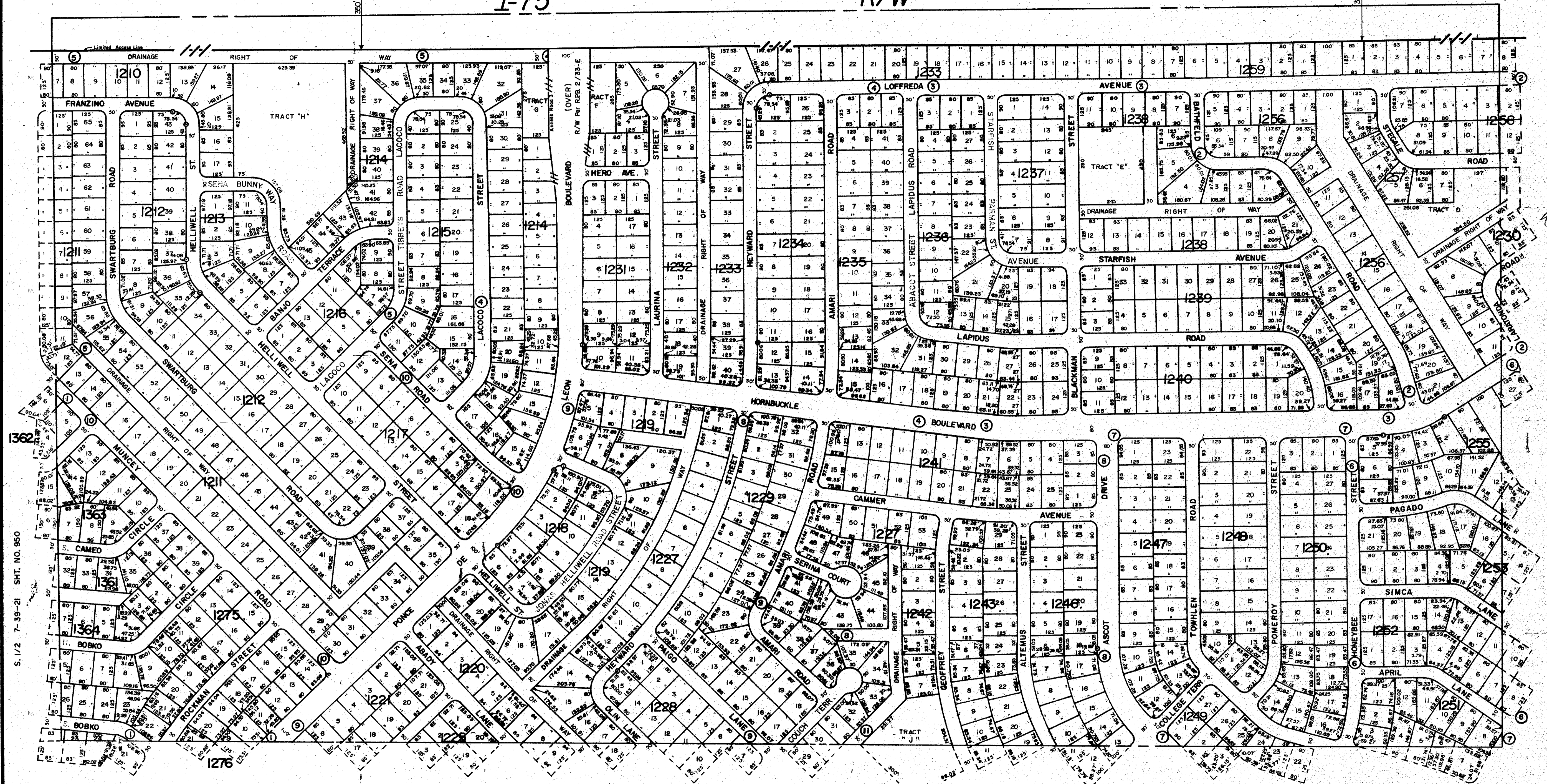


I-75

N. 1/2 8-39-21 SHT. NO. 951

R/W



S. 1/2 7-39-21 SHT. NO. 950

S. 1/2 9-39-21 SHT. NO. 954

SUBDIVISION INDEX

No.	PORT CHARLOTTE SUB.	Name
1.		26th ADD. 15/36
2.		27th ADD. 15/11C
3.		" " 15/11D
4.		" " 15/11E
5.		" " 15/11F
6.		" " 15/11G
7.		" " 15/11H
8.		" " 15/11I
9.		" " 15/11J
10.		" " 15/11K
11.		" " 15/11L

- LEGEND
- D.O.T. Limited Access R/W
 - PERM. REF. MON. (for Subs.)
 - CONC. MON.
 - IRON PIPE
 - CO. SEC. COR. MON.
 - CO. BENCH MARK

DATE	ALTERATIONS DESCRIPTION
JULY 1968	ADDED PORT CHARLOTTE SUB 26th ADD
JULY 1968	ADDED PORT CHARLOTTE SUB 27th ADD
FEB. 1969	Added I-75 R/W per S.R.D. Maps
MAY 1969	Added D.O.T. Limited Access I-75 R/W
JULY 1969	CHANGED STREET NAMES PER O.R. 20448/65

SARASOTA COUNTY FLORIDA
 SCALE: 1"=200'
 JAN. 1968

S 1/2 SECTION 8
 TWP. 39 S. RNG. 21 E.



SHT. NO.
 952