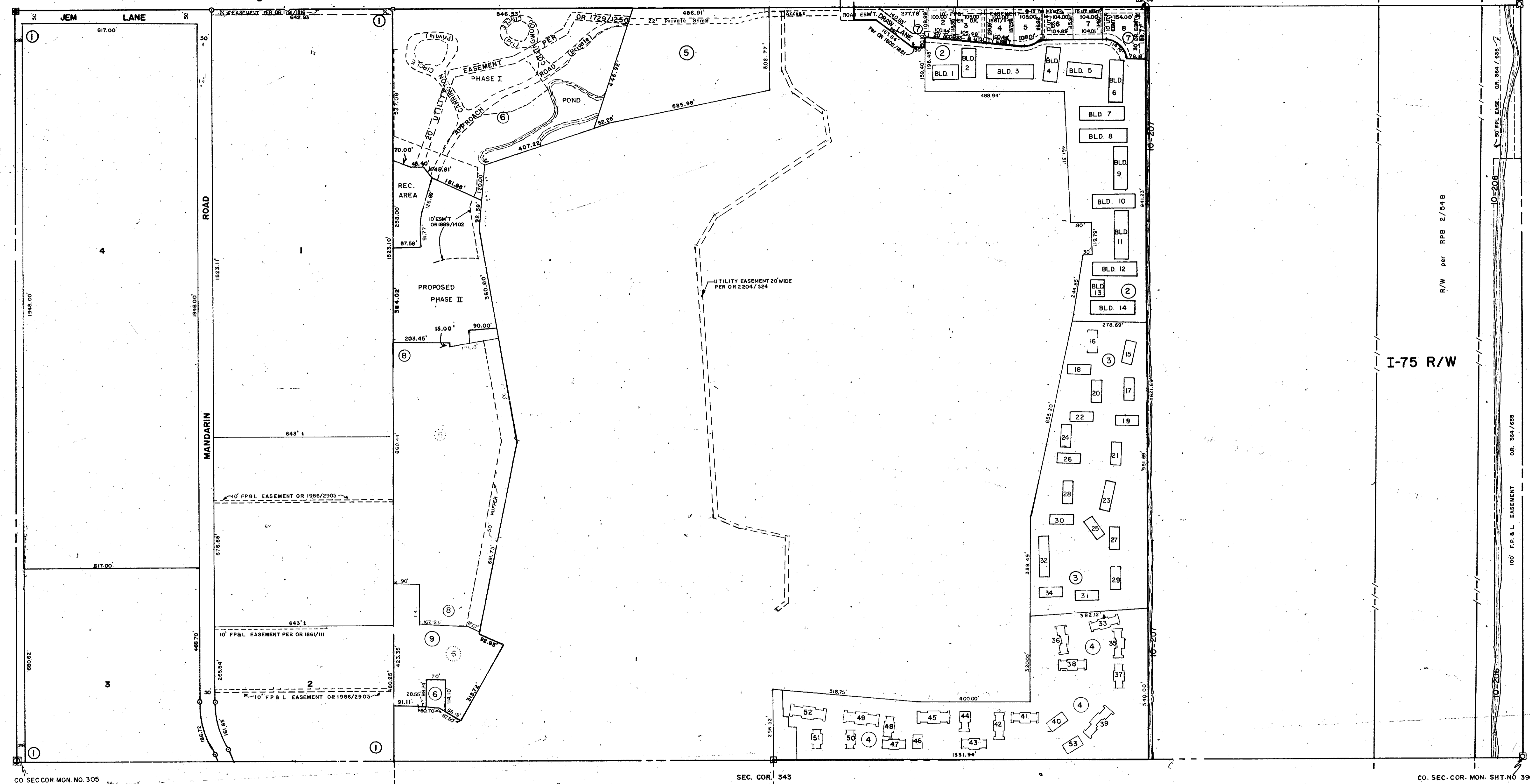


CO. SEC. COR. MON. SHT. NO. 304

N 1/2 13 - 37 - 18 SHT. NO. 95.

CO. SEC. COR. MON. SHT. NO. 395

S 1/2 14 - 37 - 18 SHT. NO. 98.



CO. SEC. COR. MON. NO. 305

SEC. COR. 343

CO. SEC. COR. MON. SHT. NO. 396

N 1/2 24 - 37 - 18 SHT. NO. 117.

SUBDIVISION INDEX

No.	Name
1.	WILDWOOD ACRES SUBDIVISION 18/49
2.	SUNRISE GOLF CLUB CONDOMINIUM I C.B. 10/38-B
3.	SUNRISE GOLF CLUB CONDOMINIUM I PHASE 2 C.B. 11/1, 3 C.B. 11/9
4.	SUNRISE GOLF CLUB CONDO I C.B. 12/34 A-D
5.	SUNRISE VILLAS CONDO, SEC. I C.B. 16/44, 1st Amended C.B. 17/10
6.	WESTWOODS AT SUNRISE COUNTRY CLUB, A CONDOMINIUM C.B. 23/26
7.	SUNRISE VILLAGE, SUBDIVISION PB. 31/21
8.	WESTWOODS AT SUNRISE COUNTRY CLUB, CONDO, SEC. 2, PHASE 1 C.B. 27/44
9.	WESTWOODS AT SUNRISE COUNTRY CLUB, CONDO, SEC. 2, PHASE 2 C.B. 28/38

- LEGEND**
- ⊙ PERM. REF. MON. (for Subs)
 - CONC. MON.
 - IRON PIPE
 - ⊠ CO. SEC. COR. MON. (NEW NUMBERS)

DATE	DESCRIPTIONS	BY
JAN. 1992	ADDED OR 254/335	BY
JUNE 1990	ADDED 20' EASEMENT PER OR 2204/324	KLP
FEB. 1989	WESTWOODS AT SUNRISE COUNTRY CLUB, CONDO SEC. 2, PHASE 2 C.B. 28/38	RAG
FEB. 1989	WESTWOODS AT SUNRISE COUNTRY CLUB, CONDO SEC. 2, PHASE 1	SGB
JAN. 1988	ADDED 10' F.P.B.L. EASEMENT OR 1886/2905	RAG
SEPT. 1987	ADDED 10' F.P.B.L. EASEMENT OR 1886/2905	RAG
SEPT. 1986	ADDED SUNRISE VILLAGE SUB. PB. 31/21	RAG
JULY 1986	10' F.P.B.L. EASEMENT PER OR 1886/2905	RAG
JULY 1986	10' F.P.B.L. EASEMENT PER OR 1886/2905	RAG
OCT. 1985	ADDED OR 1805/752 TO PL. R.A. ESM' near Center of Section	RAG
OCT. 1985	20' DRAINAGE EASEMENT PER OR 1751/1818, LOT 1 WILDWOOD ACRES	RAG
NOV. 1984	ADDED WESTWOODS AT SUNRISE COUNTRY CLUB, A CONDOMINIUM, Section 1	RAG

SARASOTA COUNTY, FLORIDA.
SCALE 1"=200' JUNE 1964

S 1/2 SECTION 13
TWP. 37 S. RNG. 18 E.

SHT. NO.
96

