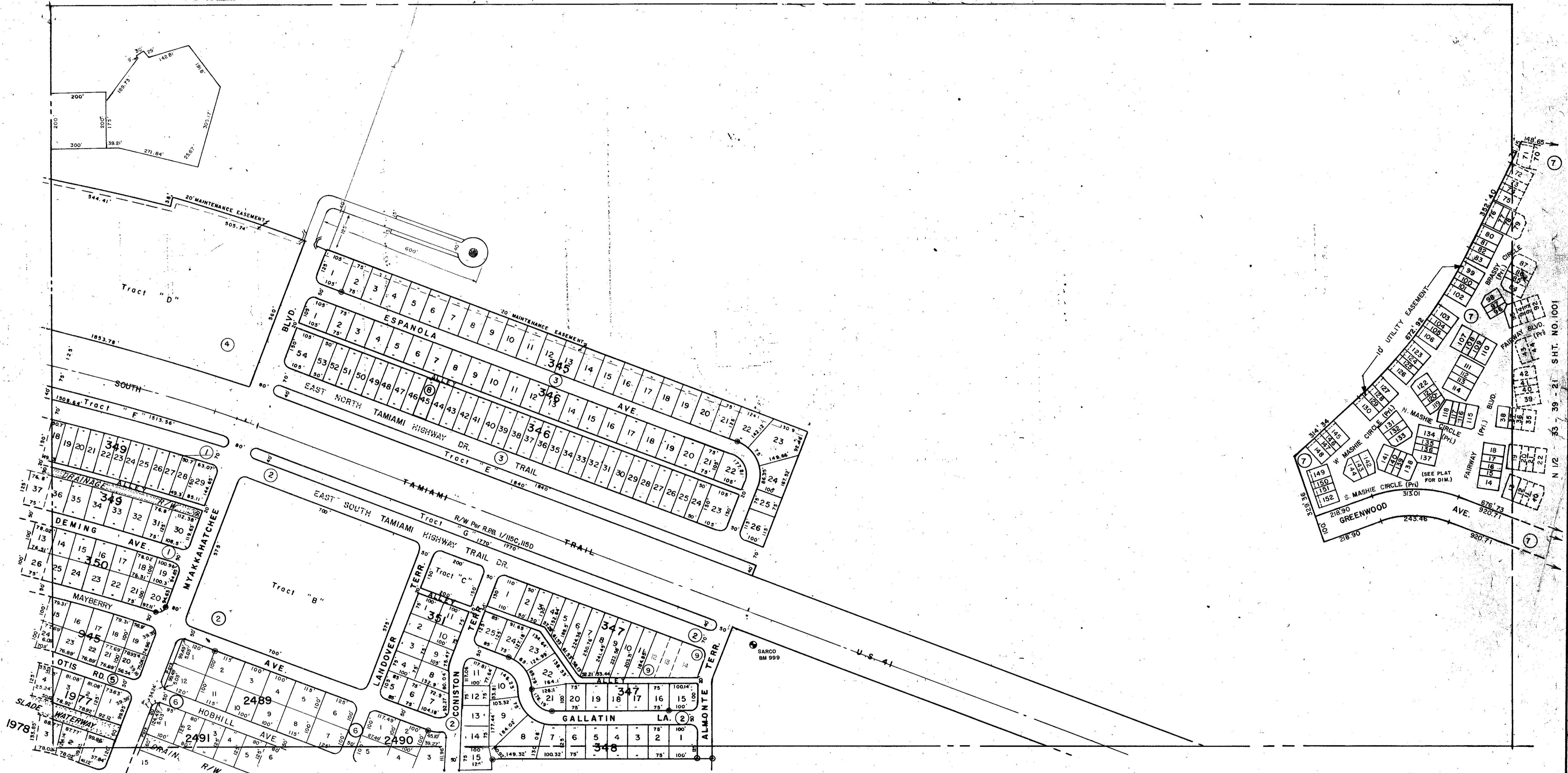


N 1/2 31 - 39 - 21 SHT. NO. 997



SUBDIVISION INDEX

No.	Name
1	PORT CHARLOTTE 3rd. ADD. Sh. No. 2 11/31 A
2	" " " " " " " " 3 11/31 B
3	" " " " " " " " 4 11/31 C
4	" " " " " " " " 5 11/31 D
5	" " " " " " " " 3 17/52 B
6	Port Charlotte 50th Add. 21/7 C
7	N. PORT CHARLOTTE COUNTRY CLUB UNIT II 26/37 A, B, and C
8	SEVEN T'S CONDOMINIUM CB 26/30
9	MISSION PLAZA CB 28/11

- LEGEND**
- Section Corner Monument
 - Permanent Reference Monument
 - Reference Point for Subdivisions
 - ① Subdivision Index Number
 - ▬ Drainage

ALTERATIONS	
DATE	DESCRIPTION
DEC 1967	SPLITS & REVISIONS
AUG 1968	PORT CHARLOTTE 42ND ADD.
SEP 1974	PORT CHARLOTTE 50TH ADD. "J.M.M."
JAN 1980	N. PORT CHARLOTTE COUNTRY CLUB UNIT II
OCT 1985	ADDED SARCO BM 999
MAY 1987	ADDED SEVEN T'S CONDO
SEP 1989	ADDED MISSION PLAZA CB 28/11
OCT 1990	CHANGED STREET NAMES PER OR 2045/65

SARASOTA COUNTY FLORIDA
SCALE: 1" = 200'
DEC. 1960

N 1/2 SECTION 32
TWP. 39 S. RNG. 21 E

SHT. NO.
999

NOTE: This map prepared for "Visual" purposes ONLY and is a reference to Plats and R/W. Do not rely on this map for available Record Documents, Tax Files & Aerials. Section distances and angles not shown on this map may vary from the actual scale.

