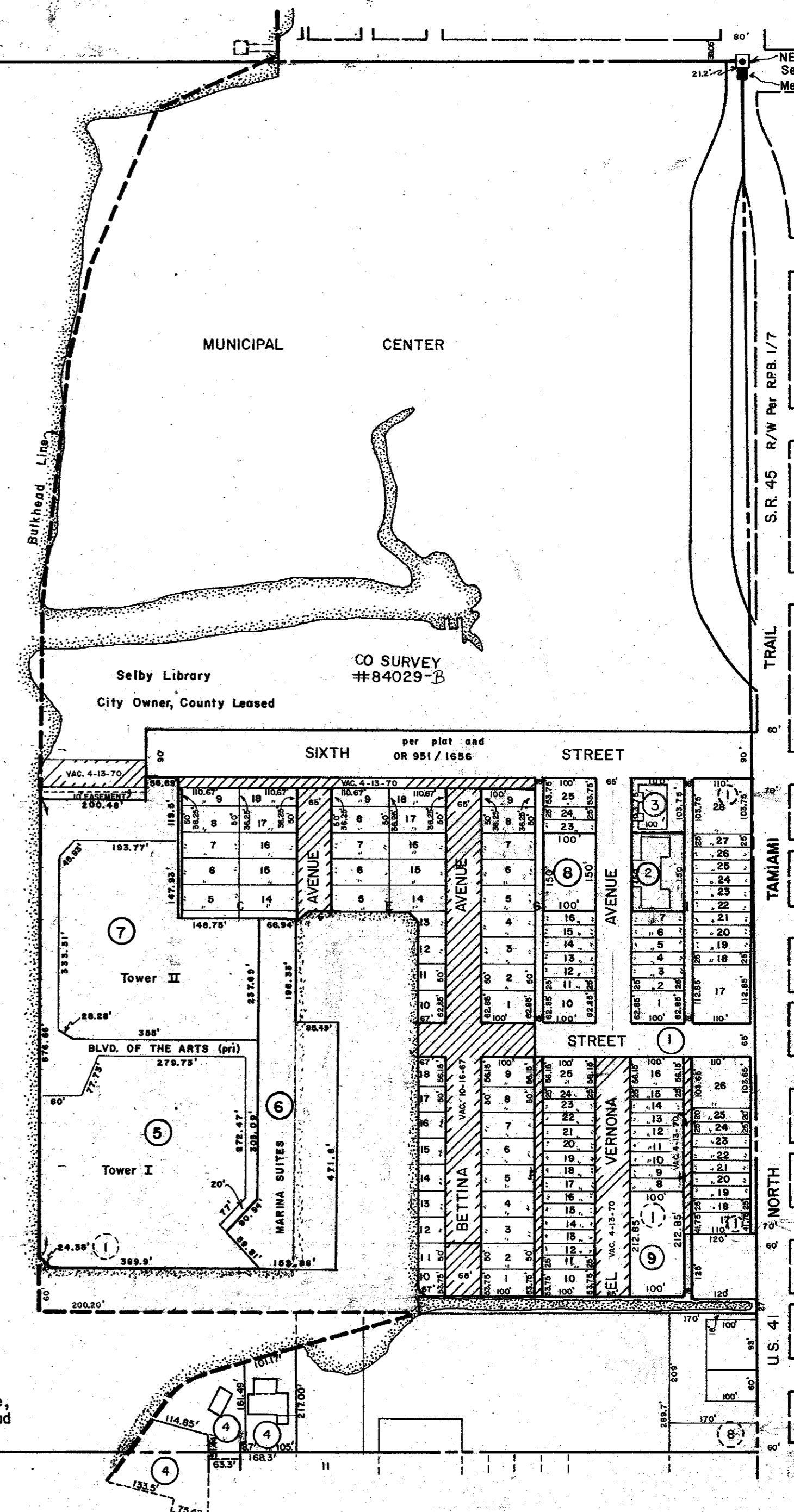


NOTE: Shoreline Scaled From Aerial Photos  
Sarasota County Dated: 3-72

N 1/2 23-36-17, Sht. No. S-9

SARASOTA BAY

N 1/2 19-36-18, Sht. No. S-32



For exact location of Bulkhead Line, see Official City of Sarasota Bulkhead as recorded in B.B. I, Page 27 K.

**SUBDIVISION INDEX**

1. Central Broadway Sub., 2/17
2. Larchmont Apartments, Sec. No. 2, C.B. 8/21
3. Chatham Arms, C.B. 3/1
4. Lawrence Pointe, I Condominium C.B. 12/1A-D
5. The Condominium on the Bay, Tower I, C.B. 18/29
6. The Condominium on the Bay, Marina Suites, C.B. 18/35, 19/31
7. The Condominium on the Bay, Tower II, C.B. 19/33
8. LARCHMONT APARTMENTS SECTION NO. 3 - A CONDO C.B. 27/22 A-D
9. LARCHMONT APARTMENTS SECTION NO. 1 - A CONDO C.B. 27/23 A-B

**LEGEND:**

- ☐ Section Corner Monument
- Bench Mark
- ⊙ Permanent Reference Monument
- ① Subdivision Index Number

REVISIONS	
DATE	DESCRIPTION
Oct. 1974	Added Larchmont Condo. D.G.N.
May 1976	Chatham Arms L.R.T.
Feb. 1979	ADDED LAWRENCE'S CONDO.
Apr. 1982	THE CONDOMINIUM ON THE BAY, TOWER I & MARINA SUITES JNY
NOV. 1982	THE CONDOMINIUM ON THE BAY, TOWER II & MARINA SUITES JNY
AUG. 1984	Added 6th St. R/W per OR 951/1956 JNY
JULY 1986	LARCHMONT APT. SECTION NO. 3: A Condo C.B. 27/22 A-D SCB
AUG 1988	LARCHMONT APT. SECTION NO. 1: A Condo C.B. 27/23 SCB

**SARASOTA COUNTY, FLORIDA**

Scale: 1" = 200' Date: April, 1973  
Drawn By: D.E.B. & J.L.D.

**CITY OF SARASOTA**

N 1/2 Sec. 24, Twp. 36, Rge. 17

Sheet No.

