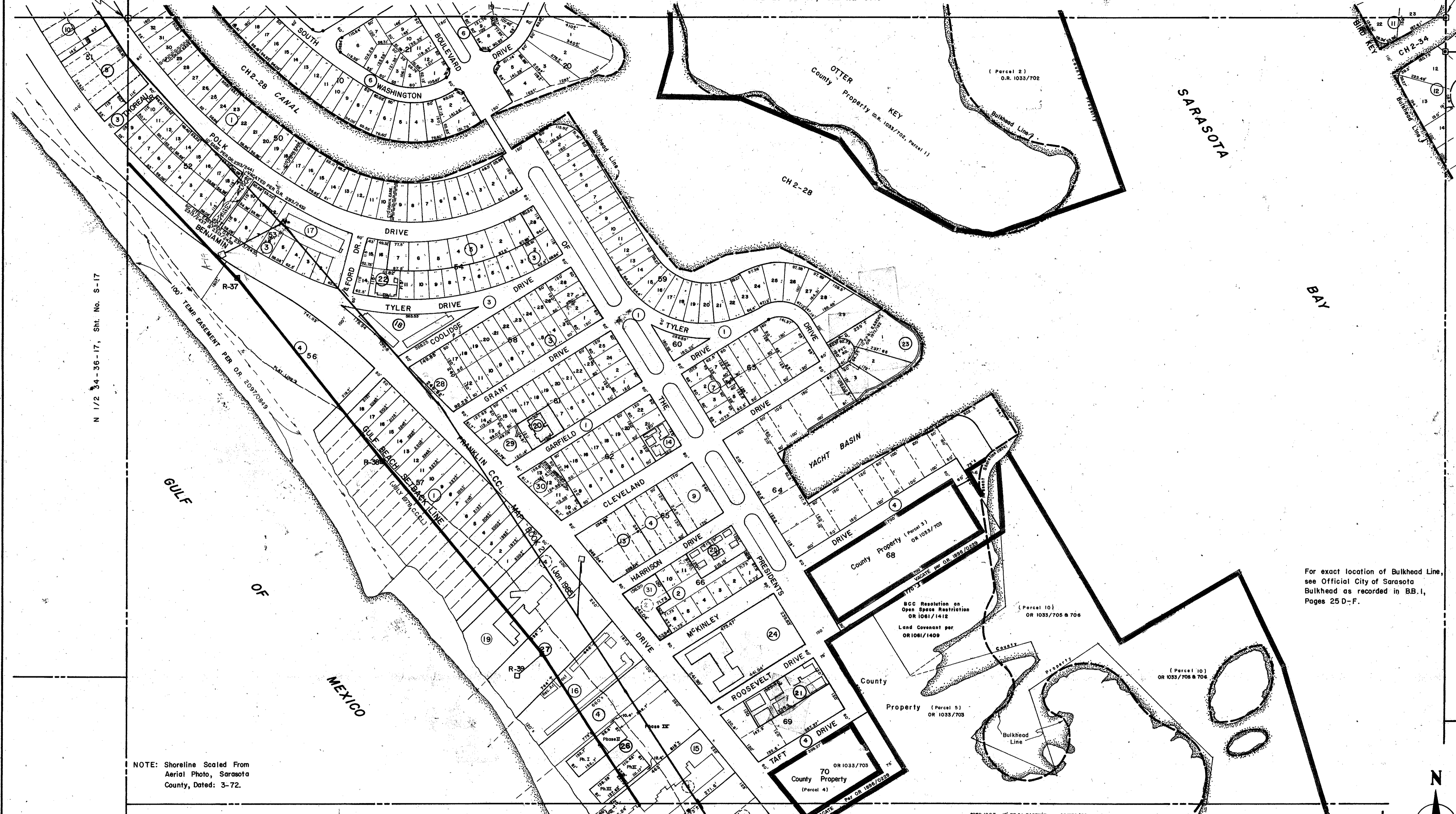


NW Sec. Cor. Mon. Sec. 35-36-17

S 1/2 26-36-17, Sht. No. S-15

NE Sec. Cor. Mon. Sec. 35-36-17



N 1/2 34-36-17, Sht. No. S-17

N 1/2 36-36-17, Sht. No. S-20

NOTE: Shoreline Scaled From Aerial Photo, Sarasota County, Dated: 3-72.

For exact location of Bulkhead Line, see Official City of Sarasota Bulkhead as recorded in B.B.1, Pages 25 D-F.

**SUBDIVISION INDEX**

1. Lido Beach Div. "B", Sub. Blks. 50, 57, 59, 60, 61, 62, & 63, Plat 3, 2/208.
2. Lido Beach Div. "B", Resub. Blk. 66, Plat 3, 3/73.
3. Lido Beach Div. "B", Resub. Blks. 51 thru 55, & 66, Plat 3, 4/13.
4. Lido Beach Div. "B", Plat 3, 2/207.
5. Lido Beach Div. "B", Resub. Lots 17 thru 27, Blk. 54, 4/81.
6. St. Armands Div. John Ringling Estates, 2/30.
7. Darringer's Resub., 4/19.
8. St. Armands Towers Condo, C.B. 3/32-32D.
9. Embassy Villa, C.B. 5/20.
10. St. Armands Towers North, C.B. 4/16-16C.
11. Bird Key Sub., 11/20-20F.
12. Bird Key Sub., Replat of Tract Blks. 16, 14, & 7, 13/48.
13. The Presidential, C.B. 7/16.
14. Chateau Village, C.B. 9/22.

15. Lido Surf & Sand Condo, C.B. 8/40-40B.
16. Gulf Beach Condominium Hotel, C.B. 10/16.
17. Lido Shores Condominium, C.B. 10/29.
18. The Ambassador on Lido Beach, Condo C.B. 11/13.
20. The Riviera of Lido Beach, C.B. 11/23.
21. Pelican Gardens Condo, C.B. 12/7.
22. Lido Royale Condominium, C.B. 13/4.
23. Kalm Pointe Subdivision, C.B. 26/46.
24. Lido Towers Condo, C.B. 14/30D.
25. White Sands of Lido Condo, C.B. 14/47.
26. Sunlight Beach Resort, Ph. I, C.B. 16/17.
27. Sunlight Beach Club, C.B. 16/18, 19/2.
28. The Sand Dollar, C.B. 23/1F.
29. Lido Pointe, A Condo, C.B. 23/48.
30. Sand Dollar South, C.B. 26/15.
31. Lido Beach House, A Condo, C.B. 28/20-20D.

DATE	REVISIONS	DESCRIPTION
JAN. 1976	THE PRESIDENTIAL CONDO. ADDED	
AUG. 1976	County Property Parcels, O.R. 1033, P. 702-706.	D.G.N.
JULY 1976	CHATEAU VILLAGE	D.G.N.
FEB. 1977	Added Lido Surf & Sand	J.W.E.
MAY 1977	Added GULF BEACH CONDO. HOTEL	J.S.D.
FEB. 1978	Added LIDO SHORES CONDO.	J.S.D.
MAY 1978	Added Lido Desert Condo.	J.S.D.
JULY 1978	Added The Ambassador on Lido Beach, C.B. 11/13D	L.F.T.
JULY 1978	Added Lido Beach Club	L.F.T.
JULY 1978	Added LIDO ROYALE CONDO.	CAO
JAN. 1980	Added Kalm Pointe Sub	EEB

**SARASOTA COUNTY, FLORIDA**  
 Scale: 1" = 200' Date: August, 1973  
 Drawn By: D.E.B. & J.L.D.

**CITY OF SARASOTA**  
 N 1/2 Sec. 35, Twp. 36, Rge. 17  
 N 1/2 Sec. 34, Twp. 36, Rge. 17

Sheet No. **S 18**



BRUNING 44-511 18772