

NOTE: Shoreline Scaled From Aerial Photo, Sarasota County, Dated: 3-72.

For exact location of Bulkhead Line, see Official City of Sarasota Bulkhead as recorded in B.B. I, Pages 27 Q-S.

S/A S-41 ATL OR 361/419

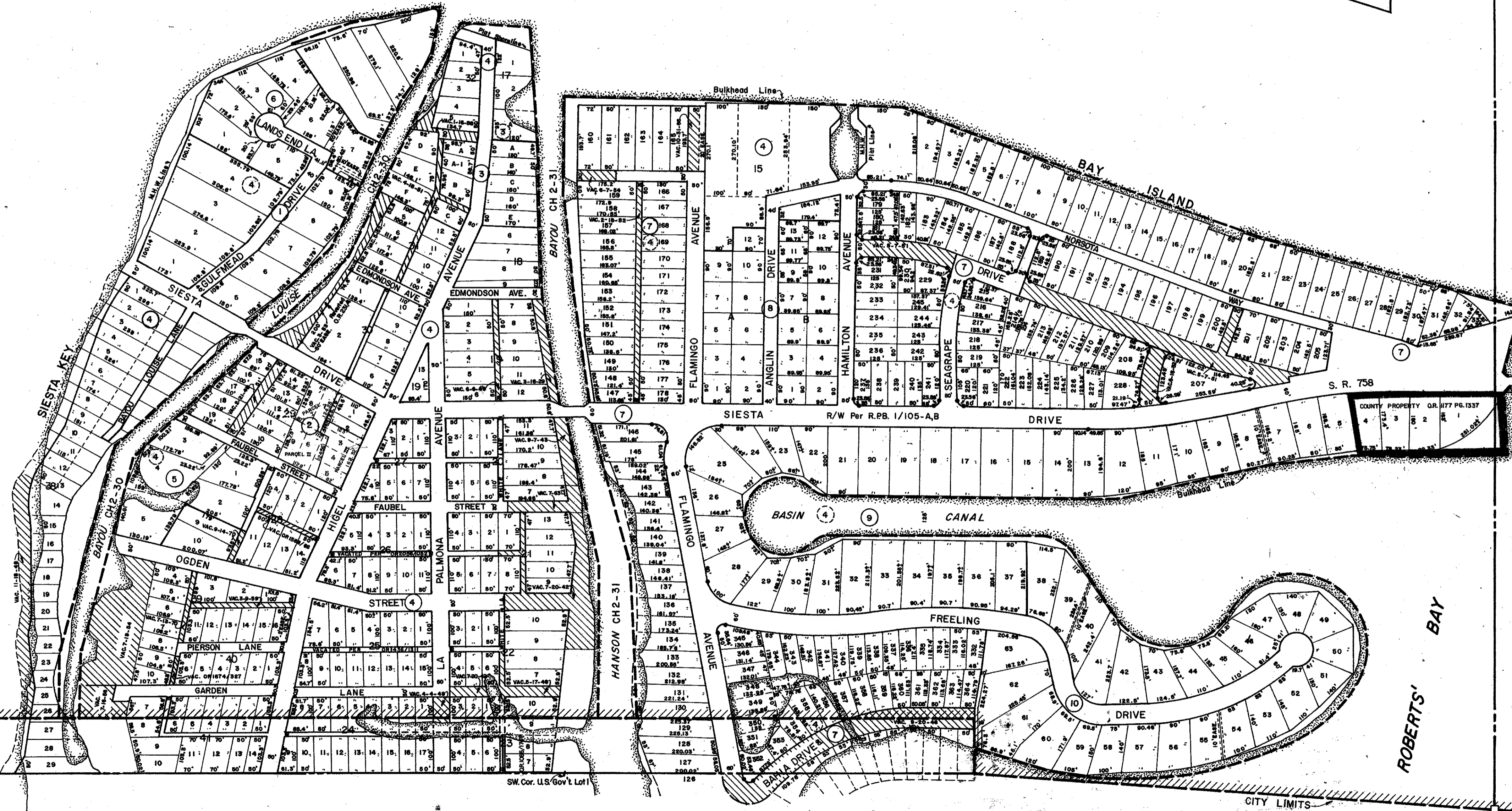
SARASOTA BAY

S 1/2 35-36-17, Sht. No. S-19

BIG SARASOTA PASS

Main Channel of Big Sarasota Pass to South.

CITY LIMITS



S 1/2 31-36-18, Sht. No. S-47

**SUBDIVISION INDEX**

1. Gulfmead Estates, 5/66
2. Resub. Blk. 29, Rev. Siesta, 1/48
3. Resub. Part Blks. 17, 18, & 31, Rev. Siesta, 4/12
4. Rev. Plat of Siesta, A/36
5. Bayou Louise, 11/23
6. Lands End Sub., 17/30
7. Bay Island Sub., 2/171-173
8. Bay Island Park, 5/45
9. Bay Island Shores, Unit 1, 5/94
10. Bay Island Shores, Unit 2, 6/81

**LEGEND:**

- Section Corner Monument
- ⊠ Bench Mark
- Permanent Reference Monument
- ① Subdivision Index Number

DATE	REVISIONS	DESCRIPTION	BY
Aug. 1975	Split lots 7-9, Rev. Plat Siesta, see C.R. 1086/1747	D.G.N.	
Sept. 1975	Split lots 2-6, Rev. Plat Siesta, see C.R. 1079/1917	J.H.V.	
APR. 1981	VACATED ALLEY IN BLK. 25, REV. SIESTA (OR 1436/152)	CNT	
JAN. 1983	ADDED COUNTY PROPERTY see C.R. 1177/1537	K.M.	
MAY 1983	CHANGED S.R. 789 TO 736	RAB	
JULY 1984	VACATED ALLEY IN BLK. 40, REV. SIESTA (OR 1674/527)	K.M.	
MAY 1988	ADDED SPILL AREA S-41 ATL, REV. OR 361/419	K.M.	
AUG 1988	VACATED ALLEY PER OR 2004/1052	308	

**SARASOTA COUNTY, FLORIDA**

Scale: 1" = 200' Date: August, 1973  
Drawn By: D.E.B. & J.L.D.

**CITY OF SARASOTA**  
S 1/2 Sec. 36, Twp. 36, Rge. 17

Sheet No.

S 21



SE Sec. Cor. Sec. 36-36-17

Co. Sec. Cor. Mon. Sht. No. 64