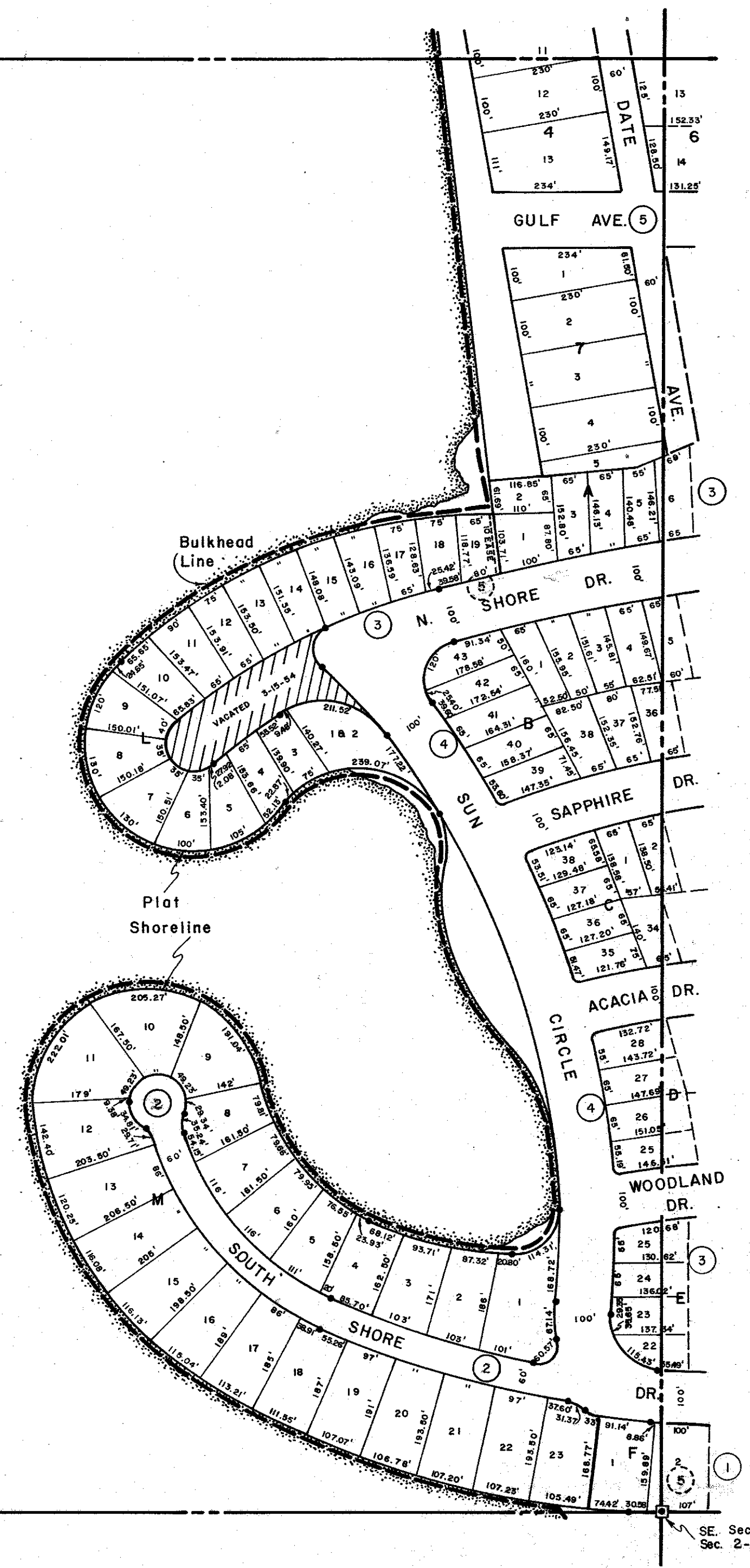


NOTE: Shoreline Scaled From Aerial Photo, Sarasota County, Dated 3-72

For exact location of Bulkhead Line, see Official City of Sarasota Bulkhead as recorded in B.B. 1, P. 27-0.

CITY LIMITS

SARASOTA BAY



S 1/2 1-36-17, Sht. No. S-2

SW. Sec. Cor. Sec. 2-36-17

N 1/2 11-36-17, Sht. No. S-5

SE. Sec. Cor. Mon. Sec. 2-36-17

**SUBDIVISION INDEX**

- 1 Resub. of Lots 14-20, Blk. E, and Lots 1-10, Blk. F of Sapphire Shores Sub. 5/76
- 2 Resub. of Blk. M, Sapphire Shores Sub. 6/78 A
- 3 Sapphire Shores Sub., Blks. A, E, F, G, H, L, M 1/173 - 176
- 4 Sapphire Shores Sub., Blks. B, C, D, K 1/153 - 154
- 5 Shell Beach Sub. A/34

**LEGEND:**

- ☐ Section Corner Monument
- ⊗ Bench Mark
- Permanent Reference Monument
- ① Subdivision Index Number

REVISIONS	
DATE	DESCRIPTION

**SARASOTA COUNTY, FLORIDA**

Scale: 1" = 200' Date: Sept. 1973

Drawn By: D.E.B & J.M.M.

**CITY OF SARASOTA**  
**S 1/2 Sec. 2, Twp. 36, Rge. 17**

Sheet No.

S  
4

