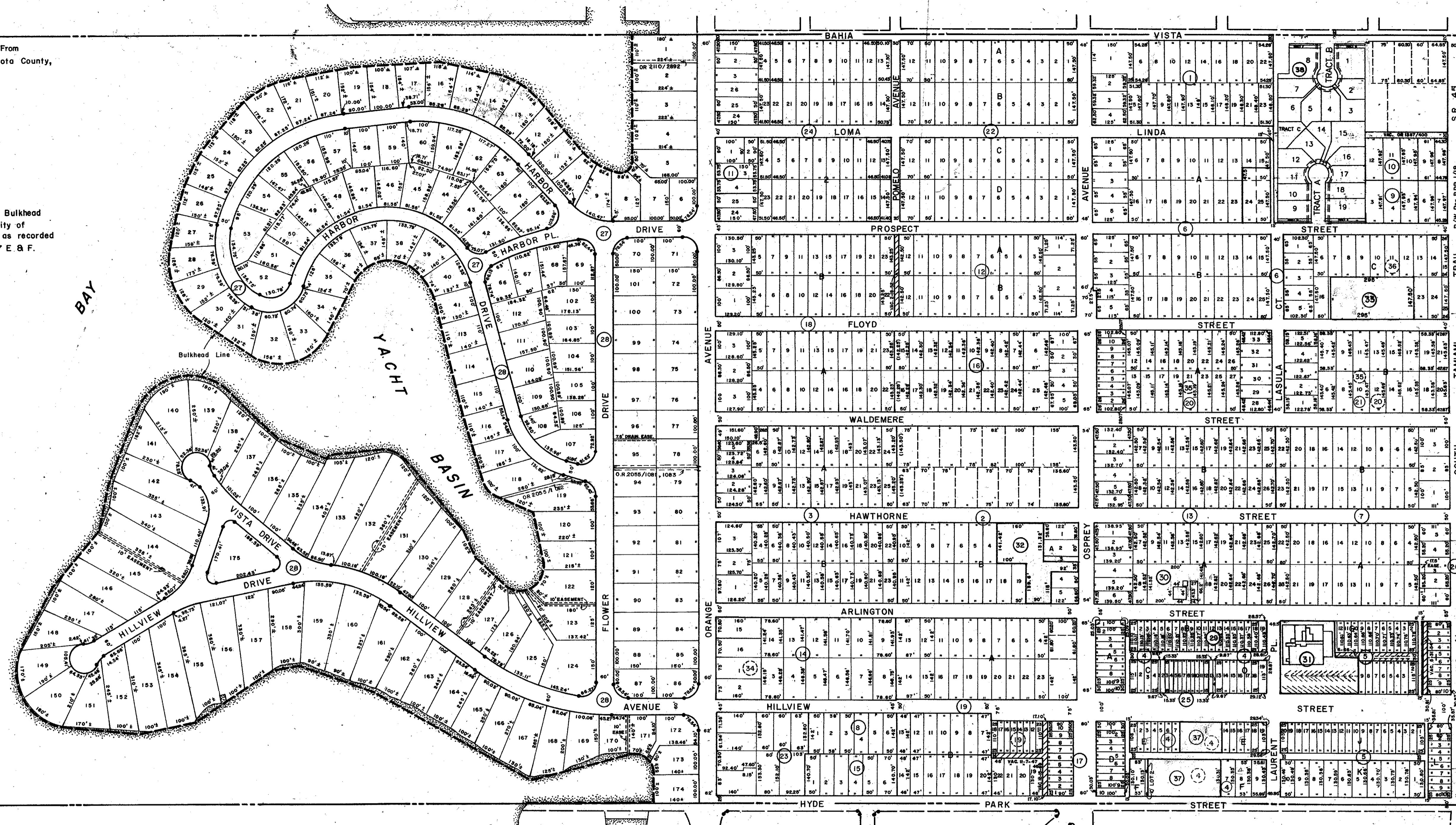


NOTE: Shoreline Scaled From Aerial Photo, Sarasota County, Dated 3-72.

For exact location of Bulkhead Line, see Official City of Sarasota Bulkhead as recorded in B.B.1, Pages 27 E & F.



S 1/2 25-36-17, Sht. No. S-13

S 1/2 Sec. 29-36-18, Sht. No. S-43

SW Sec. Cor. Sec. 30-36-18

SE Sec. Cor. Mon. Sec. 30-36-18

NE Sec. Cor. Sec. 36-36-17

SUBDIVISION INDEX

- 1. Badger Heights Sub., 1/75
- 2. E.F. Booth's Sub., 1/24
- 3. Lewis Combs Sub., 1/22
- 4. City Hall Square Sub., 2/75
- 5. City Hall Square Sub., Unit No. 2, 2/123
- 6. Floyd & Cameron Sub., 1/17
- 7. Herrick's Sub., 1/53
- 8. Hill Sub., 1/39
- 9. House Sub., 4/11
- 10. House's Sub., Resub. of Lot A, 4/24
- 11. Johnson's Sub., 2/116 A
- 12. Matheny Sub., 1/17
- 13. Mc Keehan Sub., 1/219
- 14. Mc Intyre - Wilson - Potters Sub., 1/8
- 15. Mc Kune's Sub., 1/179
- 16. Midwood Manor Sub., 2/85
- 17. Morrick Square Sub., 2/141
- 18. Morton Terrace Sub., 1/34
- 19. Nichols Sub., 1/48
- 20. Pine Grove Sub., 2/181
- 21. Pine Grove Sub., a Resub of Block B, 3/93
- 22. Pomelo Place Resub., 1/4, A/17
- 23. Prater's Sub. (not recorded)
- 24. Seminole Heights Sub., A/58
- 25. Sunway Sub., a Resub of Lots 5-12, Block C, City Hall Square Sub., 8/31
- 26. Washington Blvd. Sub., 2/163
- 27. Harbor Acres Sub., Section 1, 4/55-55A
- 28. Harbor Acres Sub., Section 2, 4/63-65
- 29. Doctors Gardens Professional Condo., C.B. 6/40
- 30. Arlington Professional Building, C.B. 9/20
- 31. Sarasota Medical Condo., C.B. 11/35
- 32. Professional Medical Plaza, C.B. 19/46
- 33. Floyd Street Professional Building, C.B. 23/10
- 34. Wilson & Potters Sub. P.B. A/36
- 35. Glover O.J. P.B. A/66
- 36. Sub. N 1/2, S 1/2, NE 1/4, SE 1/4, Sec. 30-36-18 P.B. 1/118
- 37. HILLVIEW PARK MEDICAL COMPLEX CONDO. C.B. 28/10
- 38. MANDARIN PARK PB 40 PG 34

LEGEND:

- ☐ Section Corner Monument
- Bench Mark
- Permanent Reference Monument
- ① Subdivision Index Number

DATE	DESCRIPTION	BY
AUG 1989	ADDED HILLVIEW PARK MEDICAL COMPLEX CONDO. C.B. 28/10	KLP
MAY 1989	ADDED DRAINAGE EASEMENT PER O.R. 2107/2892	KLP
DEC 1988	ADDED DRAINAGE EASEMENT PER O.R. 2056/1081-1085	RAK
DEC 1988	ADDED DRAINAGE EASEMENT OR 2056/1081	RAK
JULY 1978	Split Lots 14, 15 BLK C NE 1/4, SE 1/4 Sec. 30	D.A.M.
JUNE 1976	Added Arlington Professional Building, C.B. 9/20	J.A.M.
JULY 1979	AMENDED PLAT - SARASOTA MEDICAL CONDOMINIUM	L.E.T.
DEC 1979	SARASOTA MEDICAL CONDO AMENDED PLAT	L.E.T.
JULY 1981	SARASOTA MEDICAL CONDO. C.B. 11/35	J.M.V.
MAR 1981	Vacated portion of LOMA LINDA ST., OR 1387/400	J.M.V.
SEP 1981	SARASOTA MEDICAL CONDO. C.B. 11/35	J.M.V.
SEP 1981	SARASOTA MEDICAL CONDO. C.B. 11/35	J.M.V.
JAN 1983	PROFESSIONAL MEDICAL WITH RESUB	J.M.V.
FEB 1983	SARASOTA MEDICAL CONDO. C.B. 11/35	J.M.V.
FEB 1983	FLOYD ST. MEDICAL CONDO. C.B. 23/10	J.M.V.

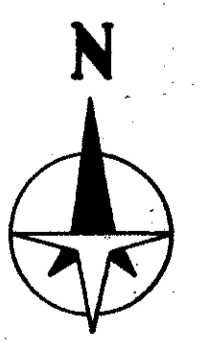
SARASOTA COUNTY, FLORIDA

Scale: 1" = 200' Date: June, 1973
Drawn By: DEB & J.M.M.

CITY OF SARASOTA
S 1/2 Sec. 30, Twp. 36, Rge. 18

Sheet No.

S 45



BRUNING 44-511 16772