

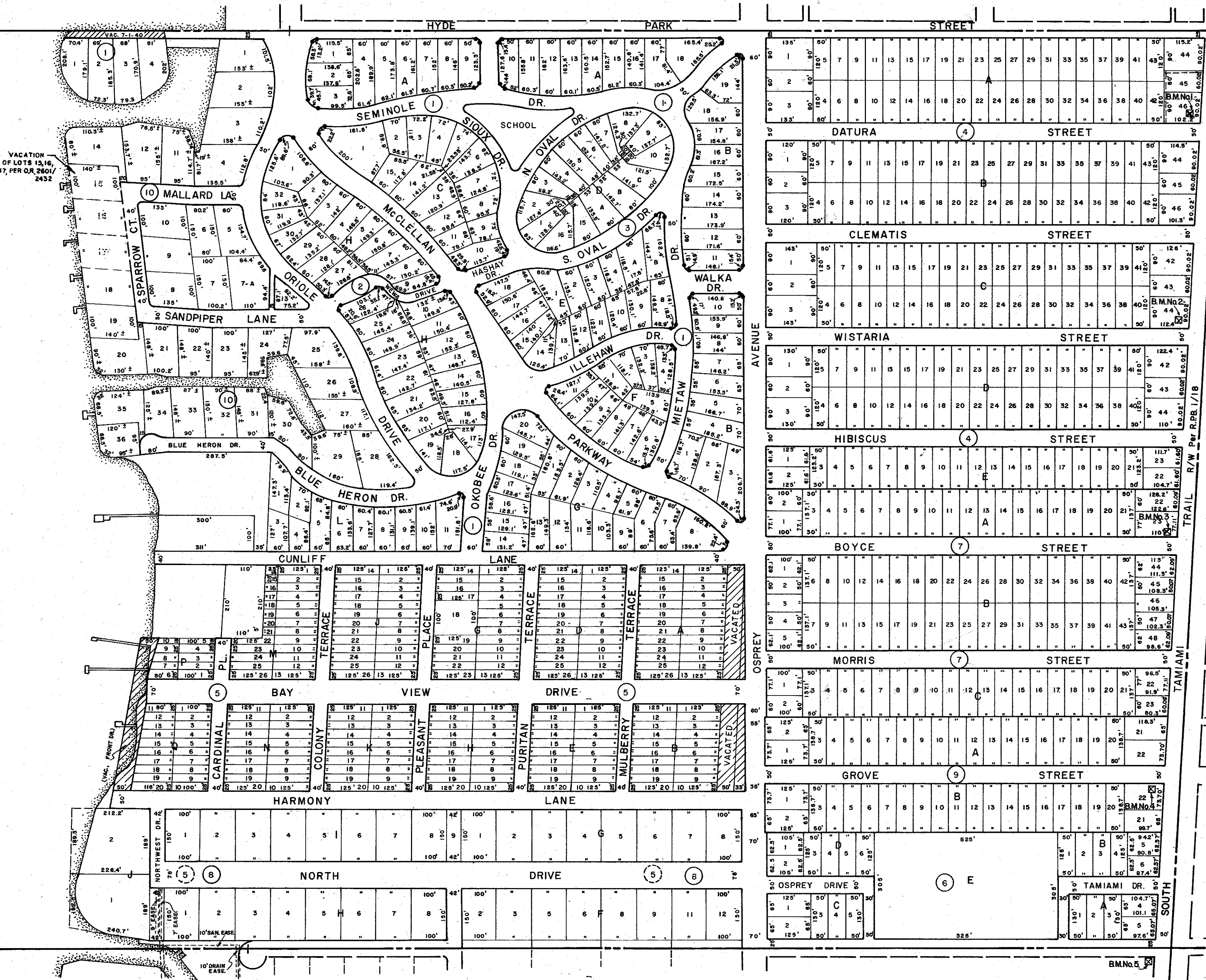
NW Sec. Cor.  
Sec. 31-36-18

NE Sec. Cor. Mon.  
Sec. 31-36-18

SE Sec. Cor.  
Sec. 25-36-17

NOTE: Shoreline Scaled  
From Aerial Photo,  
Sarasota County  
Dated: 3-72

SARASOTA  
BAY



N 1/2 36-36-17, Sht. No. S-20

N 1/2 36-36-18, Sht. No. S-49

**SUBDIVISION INDEX**

- 1 McClellan Park, A/20 & A/21
- 2 McClellan Park, Resub. Blks. J,K,H., 1/10 1/2
- 3 McClellan Park, Replat Parts Blks. D,E, 3/81
- 4 Desota Park, 1/61
- 5 Bayview Heights, 1/22
- 6 South Side School, 2/112
- 7 Hartsdale, 2/177
- 8 Cherokee Park, 2/156
- 9 Grove Heights, 1/197
- 10 Paradise Shores, 5/80 A.

**BENCH MARK SCHEDULE**

NO.	DESCRIPTION	ELEV.
1.	in S/W NW. Cor. U.S. 41 & Datura St.	19.15'
2.	in S/W NW. Cor. U.S. 41 & Wistaria St.	18.81'
3.	in S/W NW. Cor. U.S. 41 & Boyce St.	19.02'
4.	in S/W SW. Cor. U.S. 41 & Grove St.	18.55'
5.	in S/W SW. Cor. U.S. 41 & Webber St.	21.00'

- LEGEND:**
- Section Corner Monument
  - Bench Mark
  - Permanent Reference Monument
  - ① Subdivision Index Number

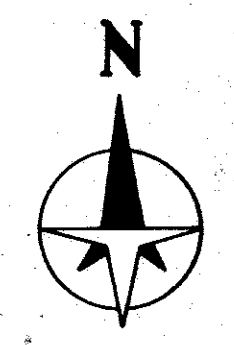
**REVISIONS**

DATE	DESCRIPTION
FEB 1984	ADDED VACATION LOTS 13,16,17 PER OR 2601/2432
OCT 1984	ADDED CTE Easement per OR 1716/1037
OCT 1984	CORRECTED SUB. INDEX

**SARASOTA COUNTY, FLORIDA**  
Scale: 1" = 200' Date: June, 1973  
Drawn By: D.E.B. & J.M.M.

**CITY OF SARASOTA**  
N 1/2 Sec. 31, Twp. 36, Rge. 18

Sheet No.  
**S 46**



BRUNING 44-511 16772