

NOTE: ELEVATION CORRECTED FROM 20.05
BASED ON INFORMATION LOCATED IN
FB 263 PG 68-74

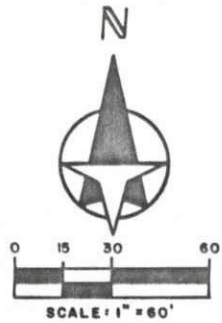
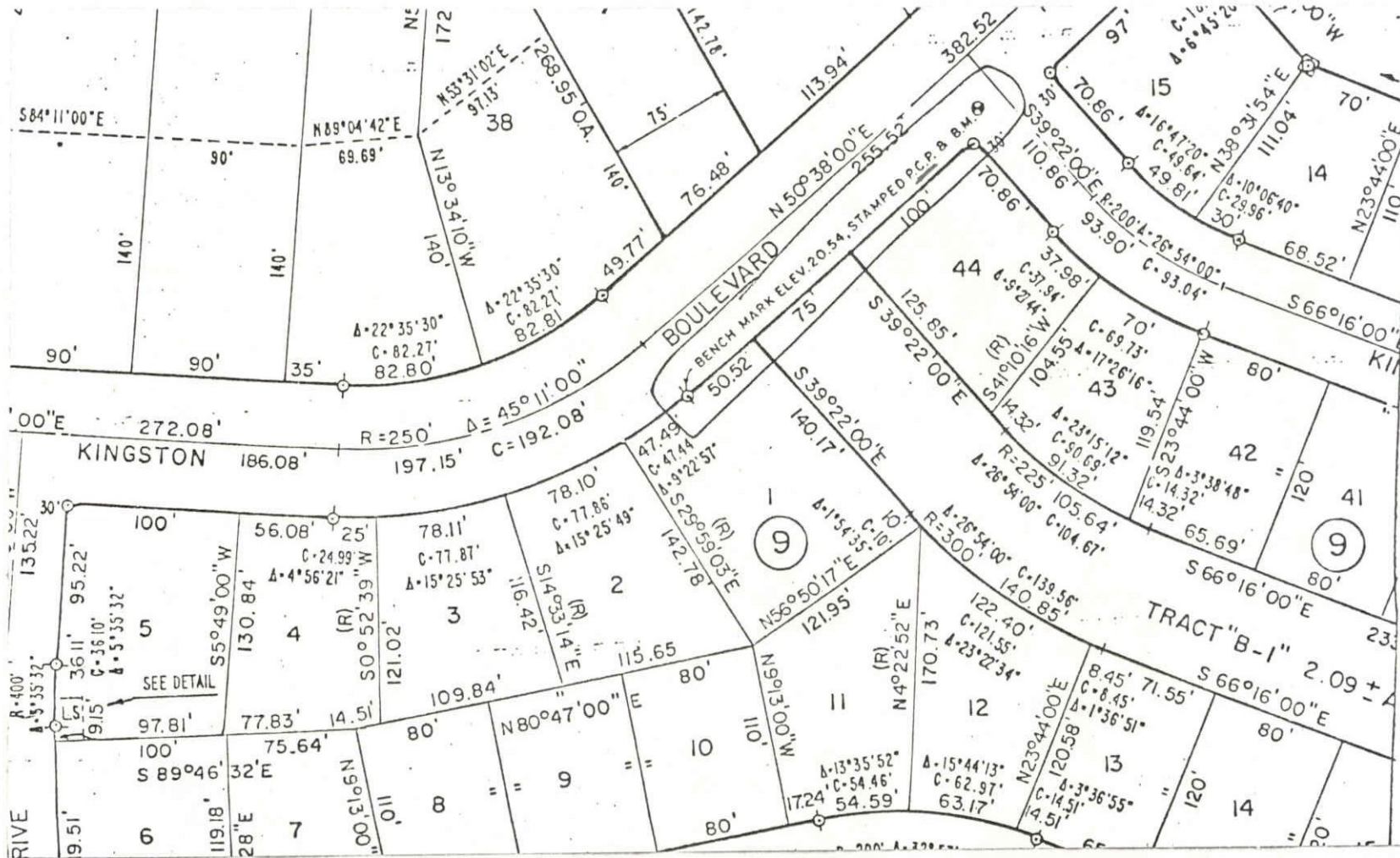
9-30-92

DATE	TYPE	FB PG. 265/68-74	BY JFJ
------	------	---------------------	-----------

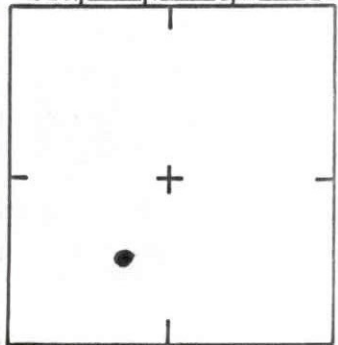
REVISIONS

SARASOTA COUNTY
TRANSPORTATION DEPARTMENT
ENGINEERING DIVISION

BENCH MARK DATA SHEET	ELEV.
	19.98
DATE DRAWN: JUNE 1983 BY: DBP	BM. NO.
REF: F.B. SEE NOTE PG. DATE	R-100
ELEV. BASED ON B.M. NO. SARCO 99.	



SEC. 15, T. 37S, R. 18E



LOCATION SKETCH
N.T.S.

GULF GATE EAST UNIT III

SARASOTA COUNTY
TRANSPORTATION DEPARTMENT
ENGINEERING DIVISION

BENCH MARK
DATA SHEET

ELEV.
20.54

DATE DRAWN: 6-20-88 BY: RJU

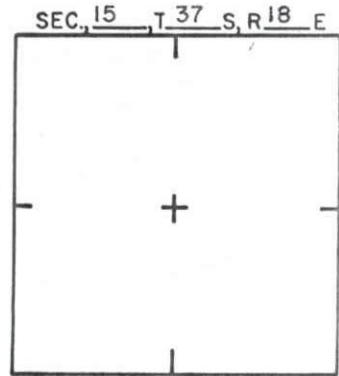
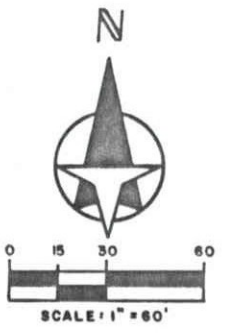
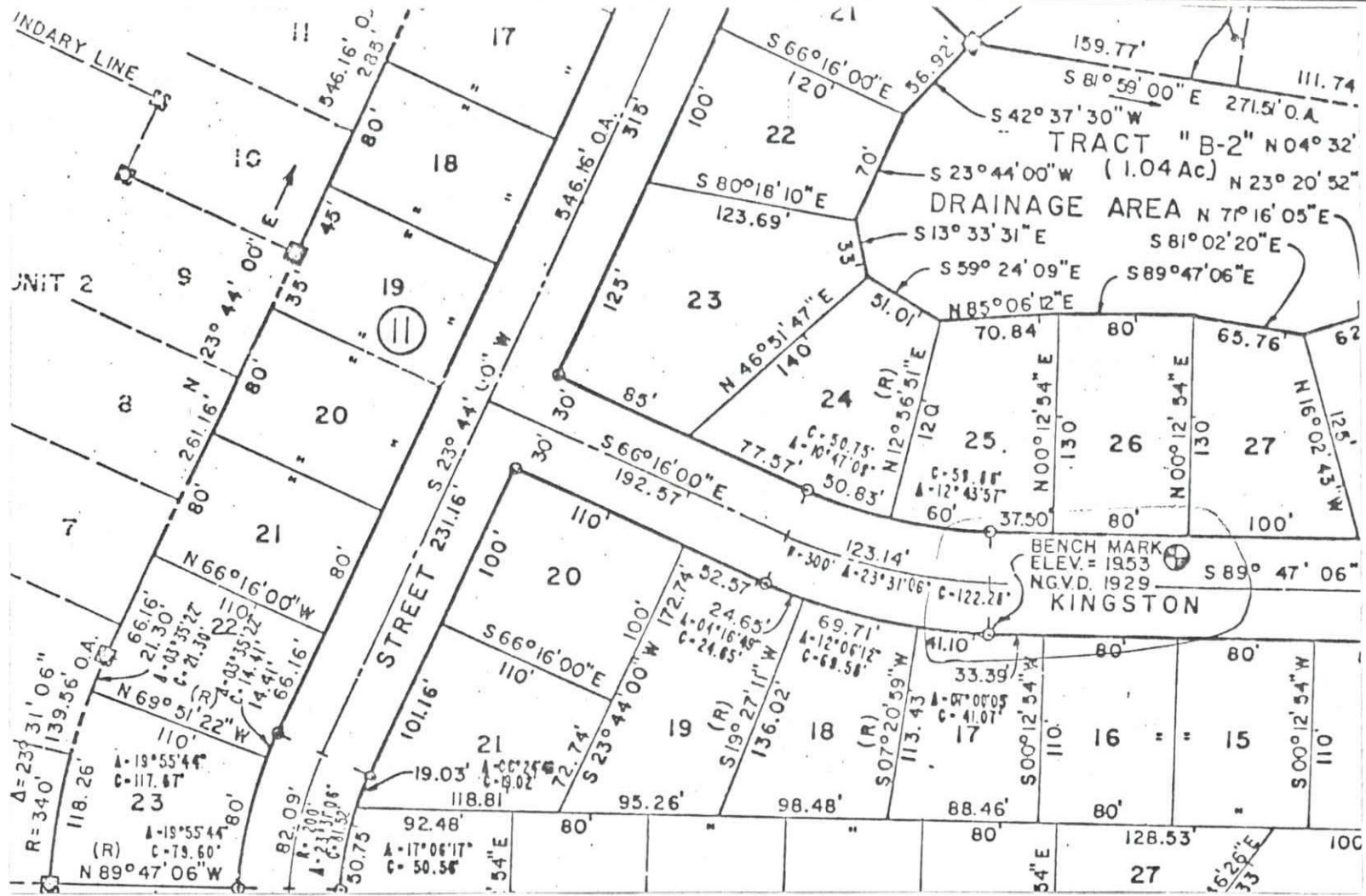
BM. NO.

DATE	TYPE	F.B. PG.	BY
REVISIONS			

REF: P.B. 29 PG. 17 DATE 6-8-83

ELEV. BASED ON B.M. NO. Sarco 100

100A



GULF GATE EAST UNIT IV

PB 29/43A

SARASOTA COUNTY
TRANSPORTATION DEPARTMENT
ENGINEERING DIVISION

BENCH MARK
DATA SHEET

ELEV.

1953

BM. NO.

100B

~~100A~~

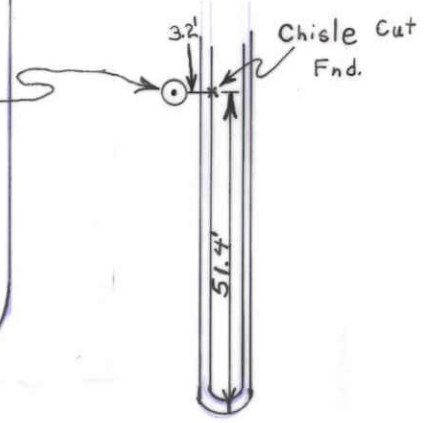
DATE DRAWN: 10-28-85 BY: WFW

REF: PB. 29 PG. 43 DATE

ELEV. BASED ON BM. NO. N.G.V.D.

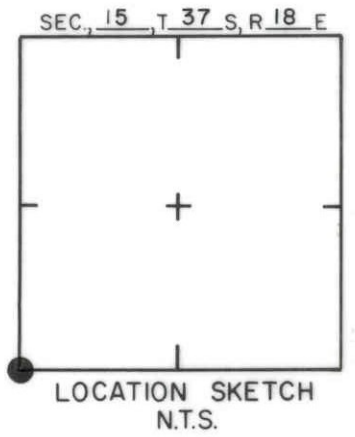
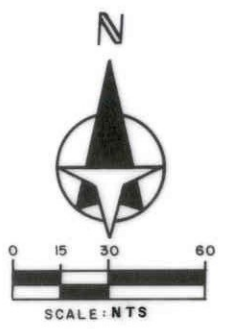
DATE	TYPE	FB. PG.	BY
REVISIONS			

BM 100E IS ALSO SEC
COR, 178 DNR DOC. # 2877



GULF GATE
BLVD.

BENEVA ROAD



SARASOTA COUNTY
 TRANSPORTATION DEPARTMENT
 ENGINEERING DIVISION

**BENCH MARK
 DATA SHEET**

ELEV.
 18.36'
 BM. NO.

DATE DRAWN: 6-16-89 BY: RJS

REF: F.B. 280 PG. 29 DATE 6-15-89

DATE	TYPE	F.B. PG.	BY
REVISIONS			

ELEV. BASED ON B.M. NO. 102 A

100E