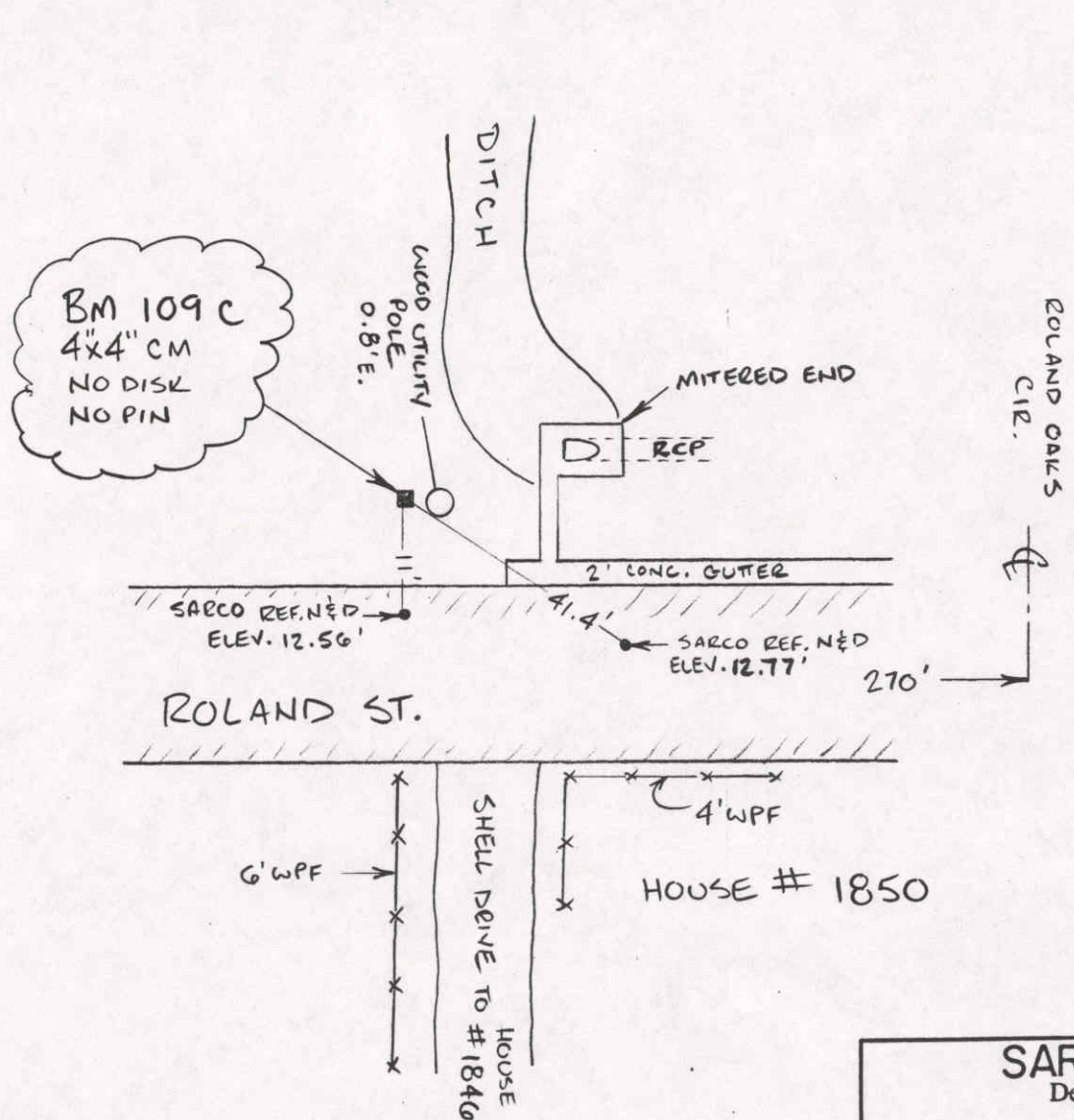


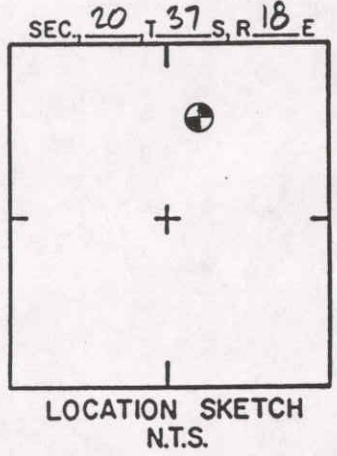
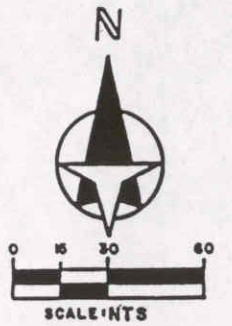
WGS 84	LAT. 27°15'06.320"
	LONG. 82°30'51.745"
FL. W. 83	N. 1061031.33'
	E. 489049.79'

DATE	TYPE	FB. PG.	BY
REVISIONS			

SARASOTA COUNTY DEVELOPMENT SERVICES SURVEY - MAPPING	
BENCH MARK DATA SHEET	
DATE DRAWN: 4/3/02	BY:
REF:	DATE 4/02
ELEV. BASED ON B.M. NO. DOT BM 640	
ELEV. 9.78' NGVD 29'	BM. NO. 109 B

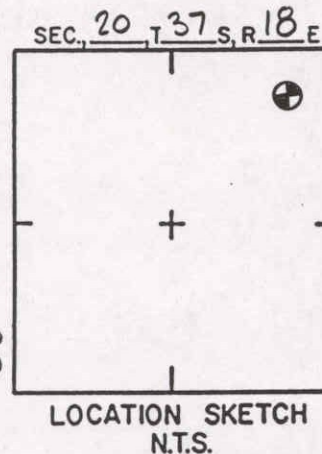
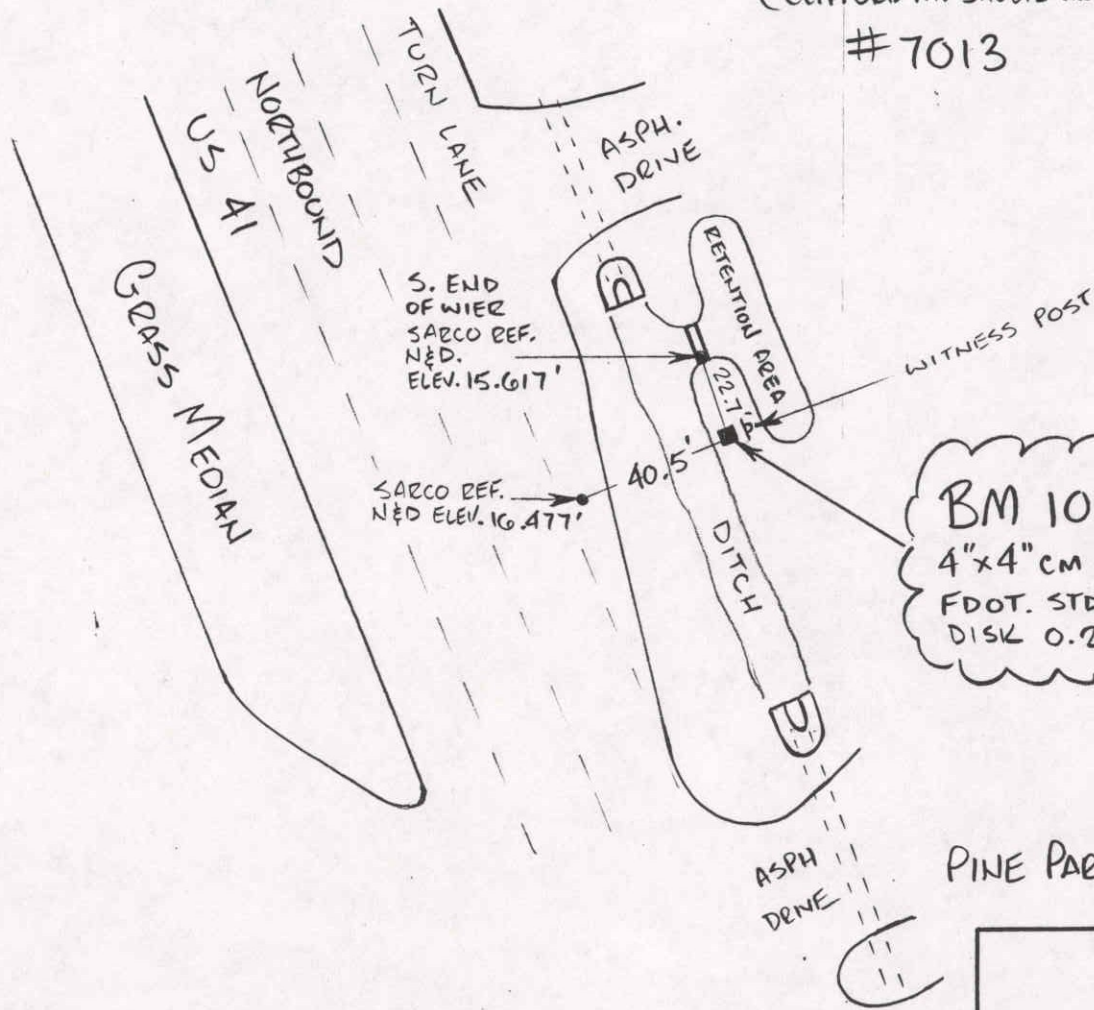
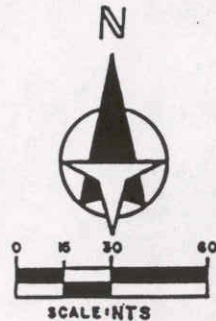


BM 109 C
4x4" CM
NO DISK
NO PIN



WGS		LAT.		SARASOTA COUNTY Development Services Survey-Mapping				BENCH MARK DATA SHEET		ELEV.
84		LON.						DATE DRAWN: 4-8-02		BY: ND
FL.W.		N.		DATE	TYPE	EB. PG.	BY	REF: PB 35 PG 1-A	DATE 3-91	BM. NO.
83		E.		REVISIONS				ELEV. BASED ON BM. NO. SARCO 109-A		109-C

CMSA
 (CLIFFORD M. SHOLTZ ARCHITECTS)
 #7013

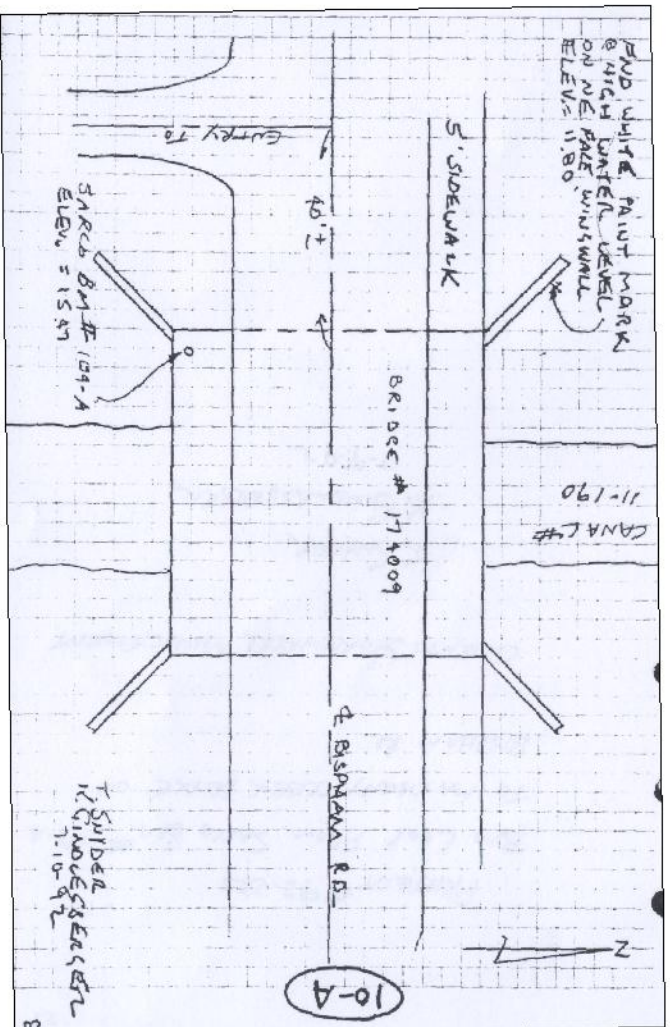


PINE PARK CENTRE #7013 - #7101

SARASOTA COUNTY Development Services Survey-Mapping	
BENCH MARK DATA SHEET	ELEV. 15.156' NGVD 29'
DATE DRAWN: 4/10/02 BY: ND	BM. NO.
REF: DOT BM # 630 DATE 7/93	109-D
ELEV. BASED ON BM. NO.	

WGS 84	LAT. 27°15'13.68" N
	LONG. 82°30'58.08" W
FL.W. 83	N. 1061777
	E. 488481

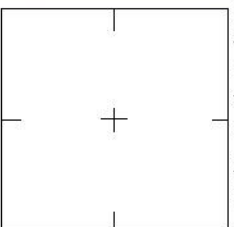
DATE	TYPE	EB. PG.	BY
REVISIONS			



SCALE: N.T.S.



SEC.: 20, T. 37, S. 18, E.



LOCATION SKETCH
N.T.S.

WGS		REVISIONS / REMARKS	
84	Lot: °		
	Lon: °		
FL W. N.			
83	E.		

SARASOTA COUNTY		ELEV.	
Geomatics Service Center		11.80'	
SURVEY/MAPPING SECTION		B.M. NO.	
BENCH MARK DATA SHEET		109-E	
DATE DRAWN: 11-19-04	BY: JRM		
REF.: CONSULTANT'S FIELD NOTES DATE: 7-9-92			
ELEV. BASED ON B.M. NO. 109-A			