

SARASOTA COUNTY
TRANSPORTATION DEPARTMENT
ENGINEERING DIVISION

**BENCH MARK
DATA SHEET**

ELEV.

18.87

BM. NO.

114B

DATE DRAWN: 3-17-87

BY: CAR

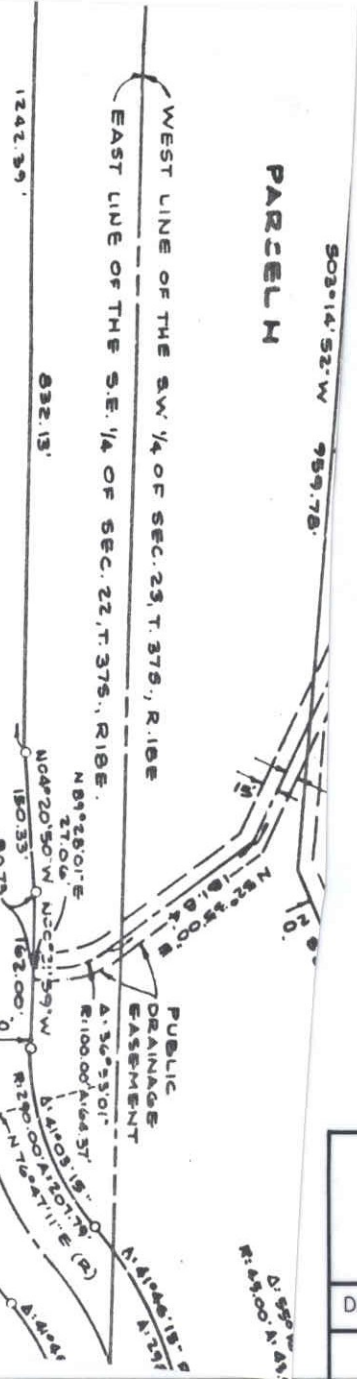
REF: SWN

DATE

ELEV. BASED ON B.M. NO.

REVISIONS			
DATE	TYPE	FB. PG.	BY

PARCEL M



N00°31'59" W 2039.04'

COUNTRY CLUB OF SARASOTA

P. 16 - 16 K

LEGEND

- CONC. MON. FOUND - NO R.L.S. # (UNLESS OTHERWISE NOTED)
- CONC. MON. PREVIOUSLY ESTABLISHED - P.R.M. - R.L.S. #2612 (UNLESS OTHERWISE NOTED)
- CONC. MON. SET - P.R.M. - L.B.#124
- CONC. MON. SET - P.C.P. - L.B.#124
- CONC. MON. OR NAIL & DISC SET ON CENTERLINE
- P.C.P. P.T., P.I., P.R.C. OR P.C.C. - P.C.P. - L.B.#124
- ⊙ RADIAL LINE
- ⊙ BENCH MARK

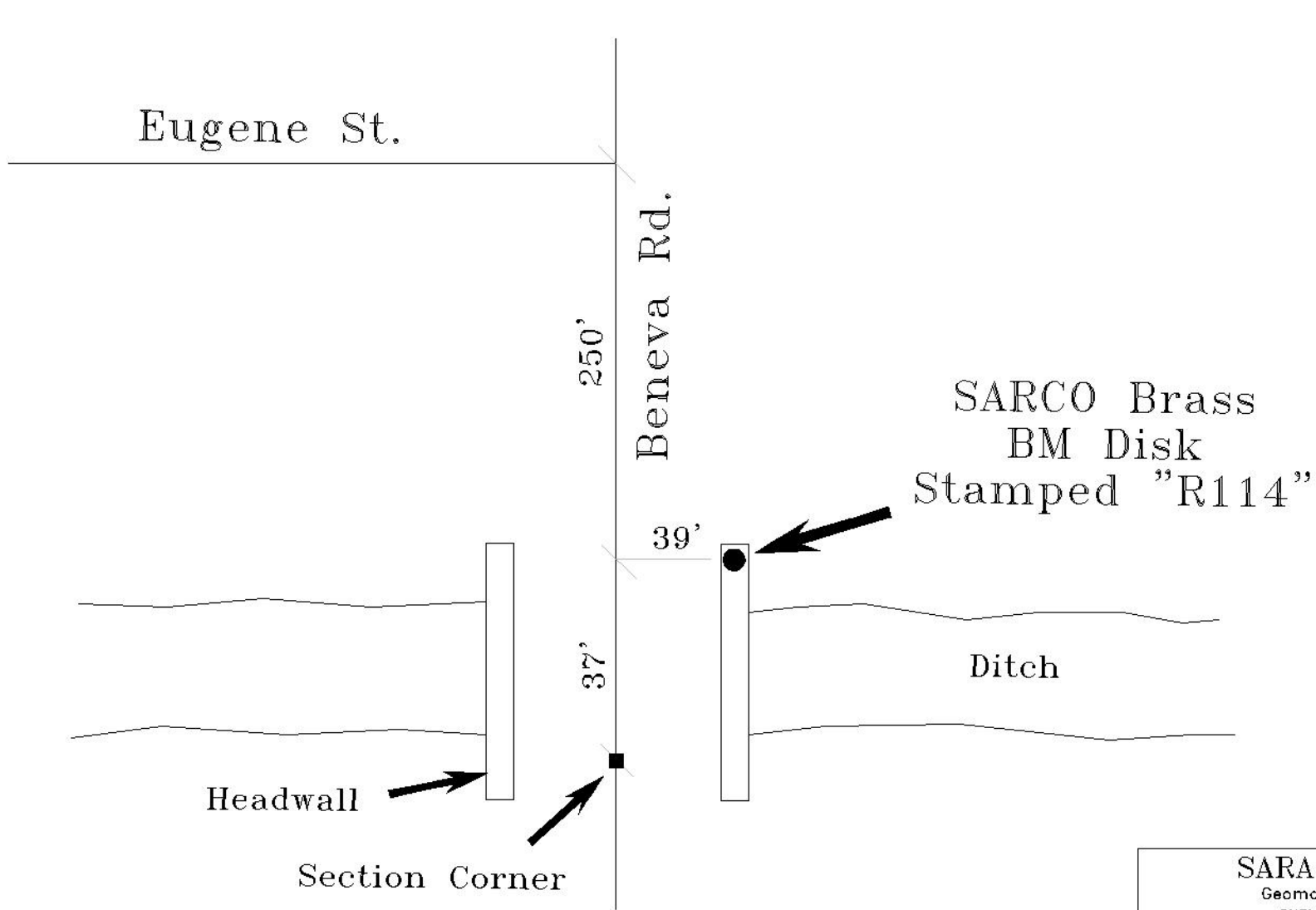
B.M. ELEV. 18.87
TOP OF CONC. MON.

B.M. ELEV. 19.57
TOP OF CONC. MON.

PRESTANCIA S
P.B. 31/27F

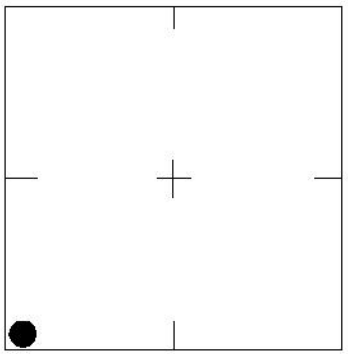
114B

114A



SCALE: N.T.S.

SEC., 22 , T 37 S, R 18 E



LOCATION SKETCH
N.T.S.

SARASOTA COUNTY
Geomatics Service Center
SURVEY/MAPPING SECTION

REVISIONS / REMARKS
Redraw Sketch 1/16/04
SET BY: MACASPHALT, Inc

BENCH MARK DATA SHEET		ELEV.
DATE DRAWN: 1/16/04	BY: ND	18.13
REF.: ELEV. by MACASPHALT, Inc		NGVD 29'
ELEV. BASED ON B.M. NO. 114		B.M. NO.
		R-114