

LOCATION SKETCH
N.T.S.

DESCRIPTION OF BENCH MARK

Designation ~~253~~ State Florida County Sarasota
 Nearest town Sarasota County Sarasota Chief of party R. Gerrish
 Distance and direction from nearest town 8.50 miles southeast Leveling date 1/66
 Character of mark A C&GS Bench Mark Disk Stamping J 253 1965
 Established by C&GS EL 22.198
 Detailed description 8.5 miles southeast along the Seaboard Air Line Railroad from the station at Sarasota, 1.2 miles south of the crossing of Clarks Road (a black topped road), near milepost 892, 46.5 feet west of the west rail of the main track, 24 feet southwest of a telephone pole, 35.5 feet west-northwest of the milepost, 1.5 feet south of a steel witness post, about 1 foot below the level of the track, and is a disk welded on top of a 3/4-inch by 4-foot long iron pipe projecting 0.7 foot.

**SARASOTA COUNTY
TRANSPORTATION DEPARTMENT
ENGINEERING DIVISION**

**BENCH MARK
DATA SHEET**

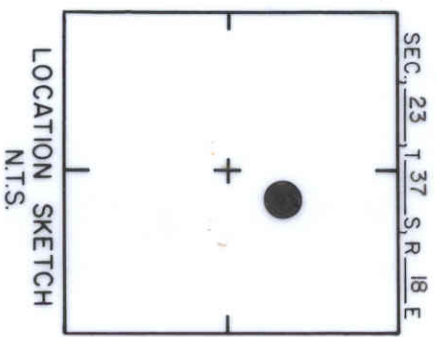
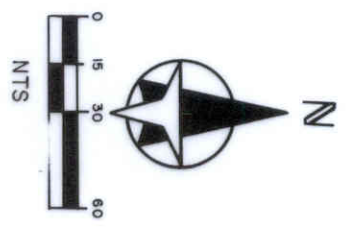
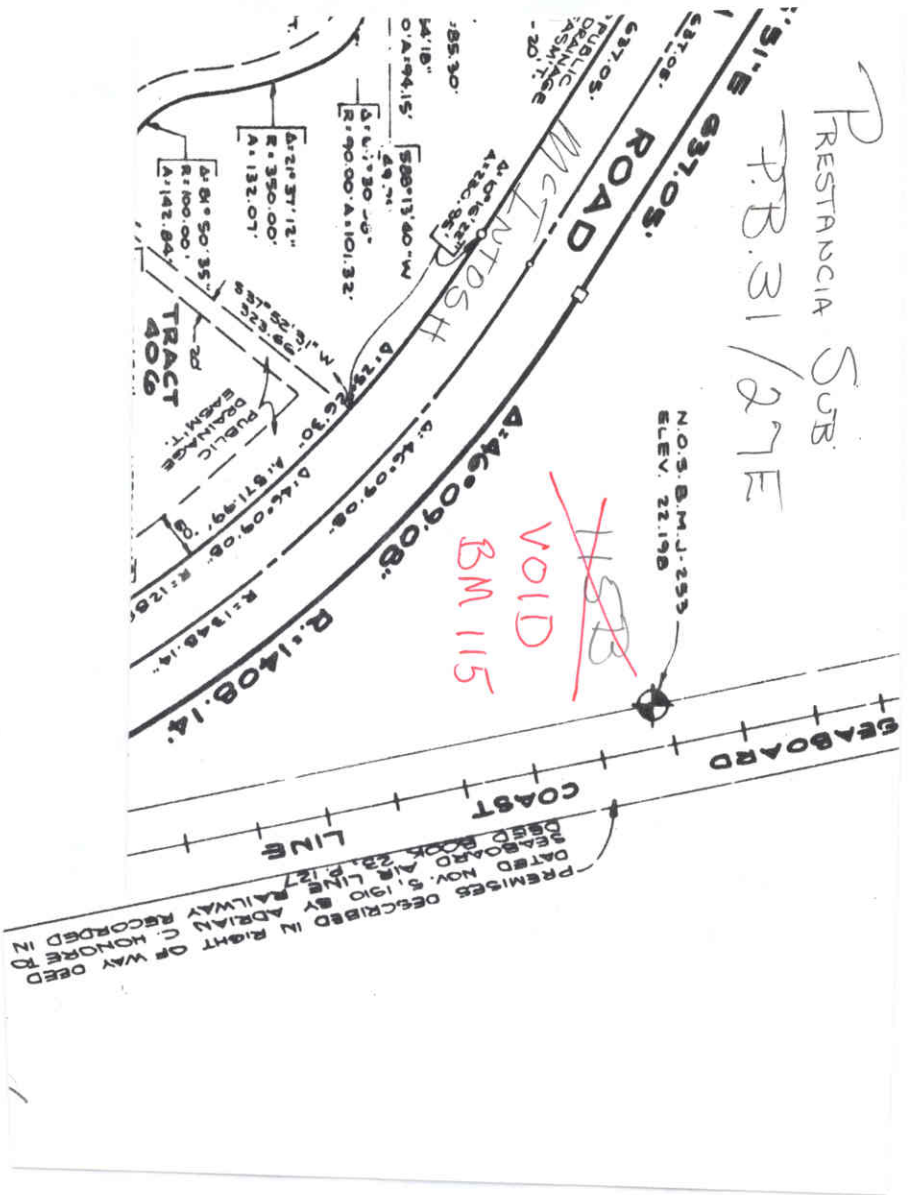
ELEV.
22,198
BM. NO.
115

DATE DRAWN: 3-13-87 BY: RJJ

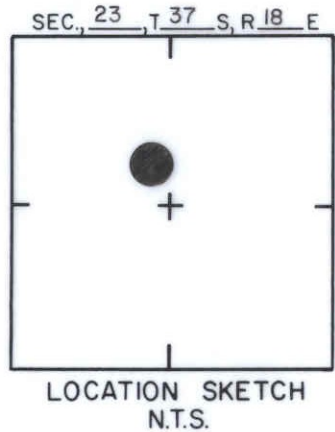
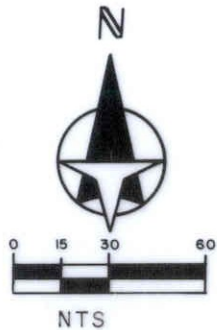
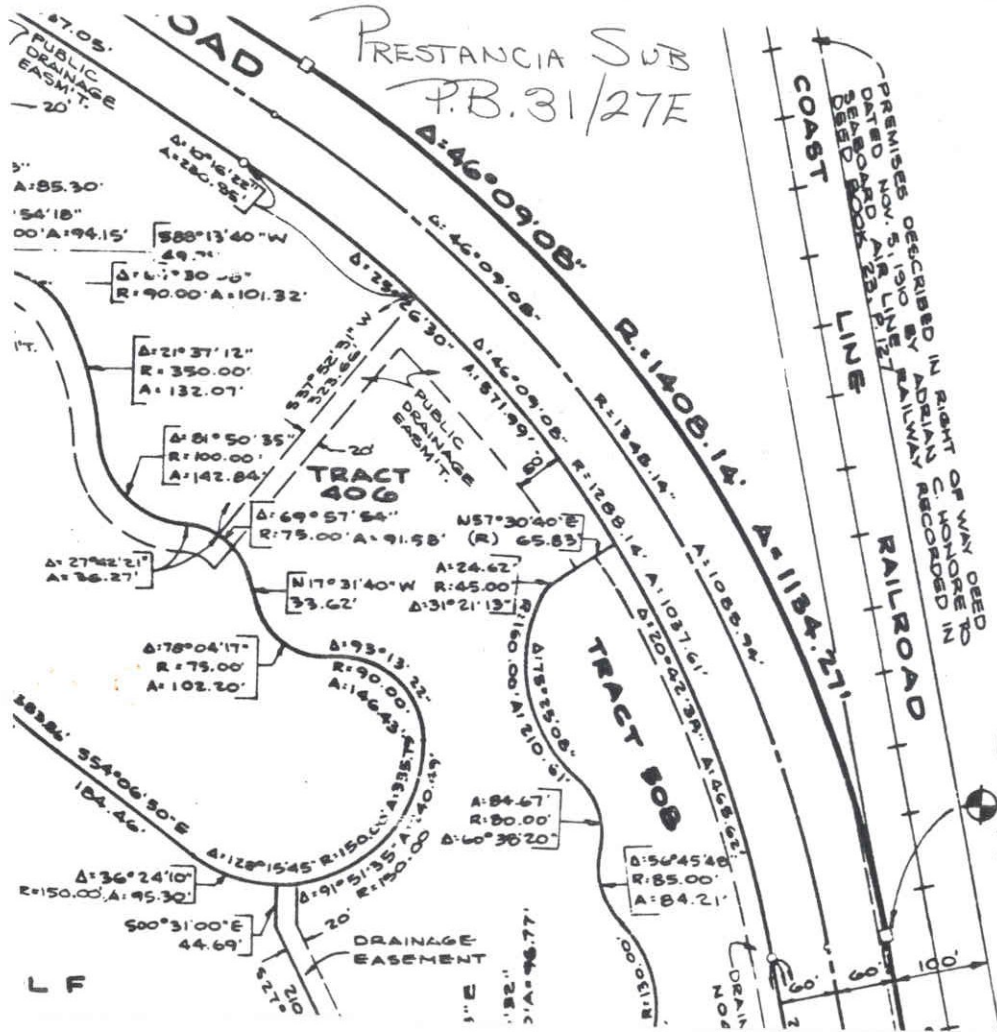
REF: NOS J 253 DATE 1/66

ELEV. BASED ON B.M. NO.

| DATE | TYPE | F.B. PG. | BY |
|-----------|------|----------|----|
| REVISIONS | | | |



| | | | | | | |
|---|------|----------|----|--|---------|---------|
| <p align="center">SARASOTA COUNTY TRANSPORTATION DEPARTMENT ENGINEERING DIVISION</p> | | | | <p align="center">BENCH MARK DATA SHEET</p> | | |
| | | | | DATE DRAWN: 3-17-87 | BY: CAR | ELEV. |
| DATE | TYPE | F.B. PG. | BY | REF: SWN | DATE | BM. NO. |
| <p align="center">REVISIONS</p> | | | | ELEV. BASED ON BM. NO. | | 1158 |



SARASOTA COUNTY
TRANSPORTATION DEPARTMENT
ENGINEERING DIVISION

BENCH MARK
DATA SHEET

ELEV.

20.77

BM. NO.

115C

DATE DRAWN: 3-17-87

BY: CAR

REF: SWN

DATE

ELEV. BASED ON B.M. NO.

DATE

TYPE

FB. PG.

BY

REVISIONS