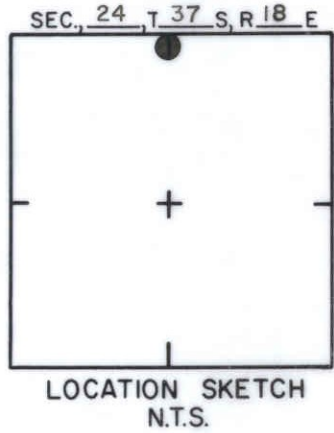
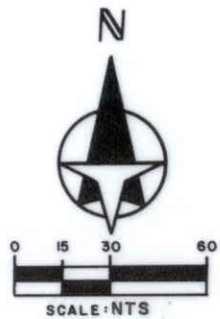
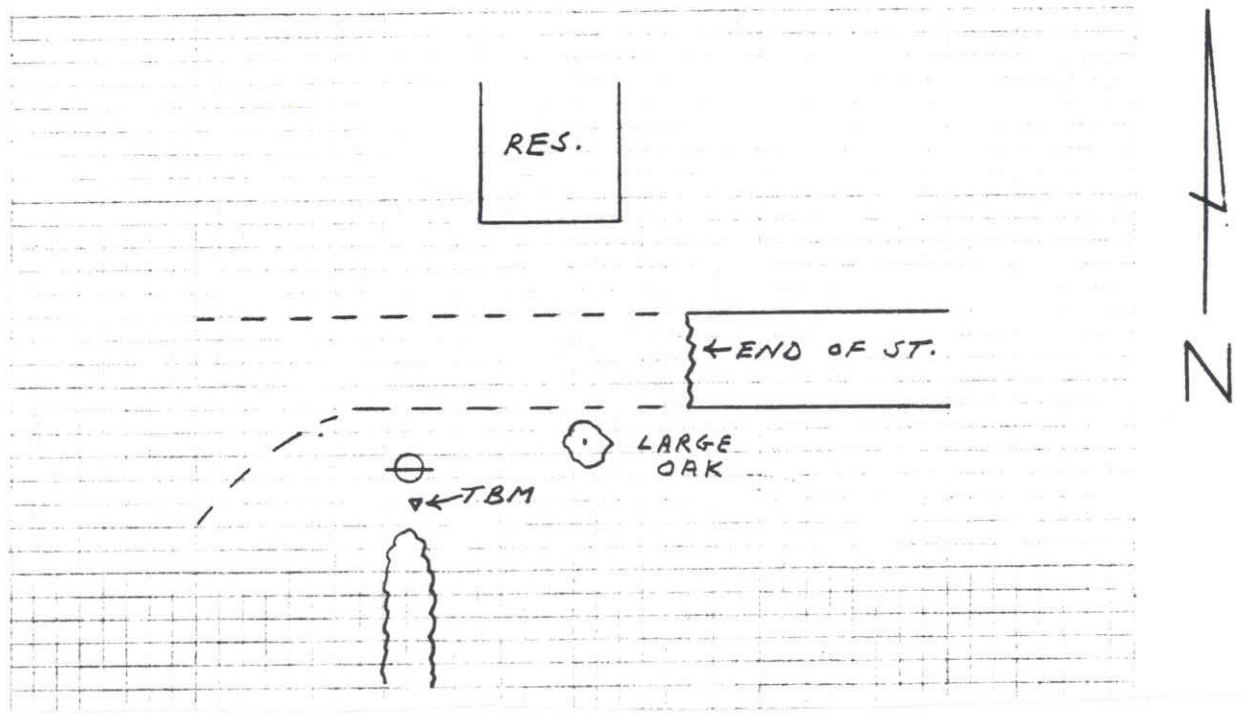


TO REACH THE MARK ~~FROM~~ AT THE N.  $\frac{1}{4}$  COR. OF SECTION 24,  
 TBM IS A CUT CROSS ON TOP OF A 1 1/2" IRON  
 PIPE PROJECTING 1' ABOVE GROUND



**SARASOTA COUNTY**  
 TRANSPORTATION DEPARTMENT  
 ENGINEERING DIVISION

**BENCH MARK  
 DATA SHEET**

ELEV.

22,54

DATE DRAWN: 2-3-87 BY: RJJ

BM. NO.

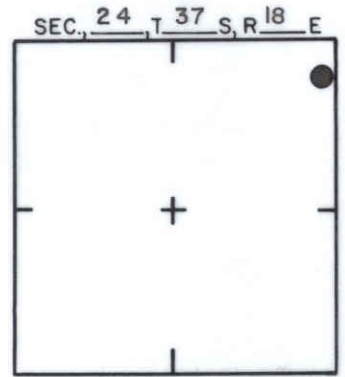
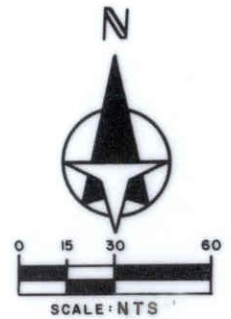
REF: SWFWMD HFH 181 DATE 10/81

117

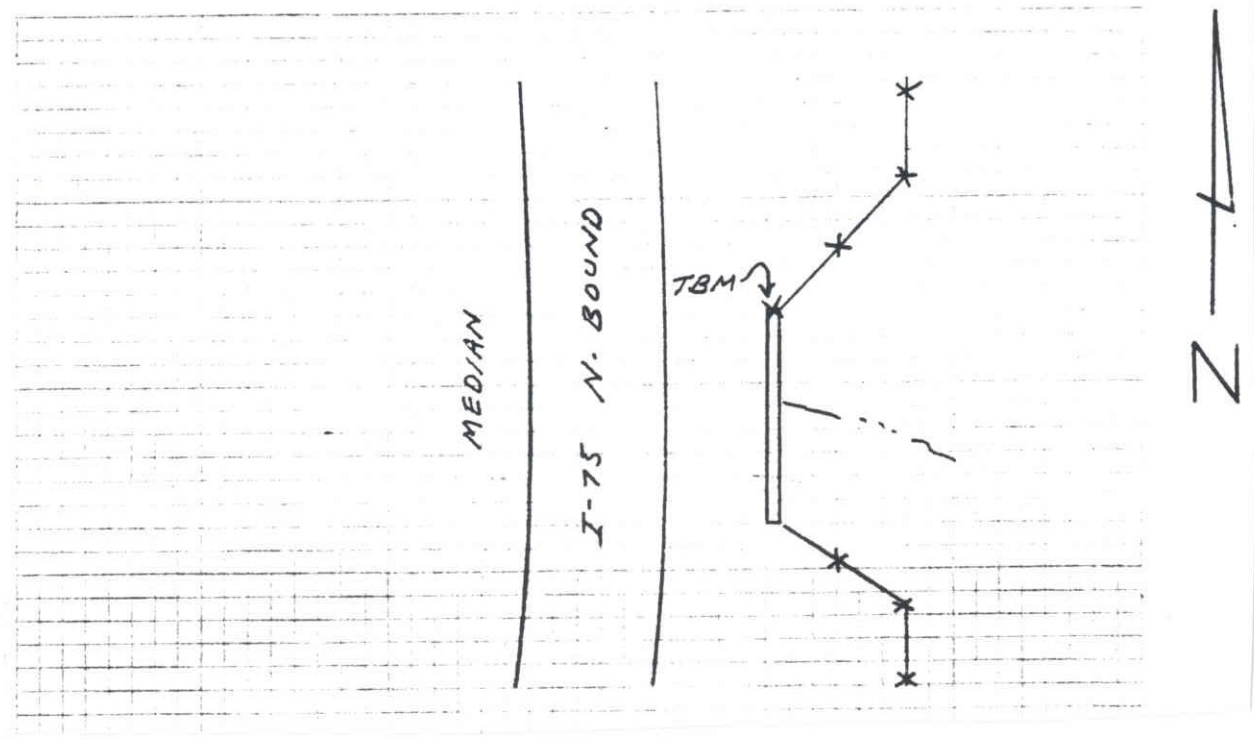
DATE	TYPE	FB. PG.	BY
REVISIONS			

ELEV. BASED ON BM. NO. NOS

TO REACH THE MARK FROM INTER. I-75 & SR-72 GO ± 1.10  
MI. S., TBM IS A CUT SQ. ON N. END OF A  
CONCRETE HEADWALL



LOCATION SKETCH  
N.T.S.



**SARASOTA COUNTY**  
 TRANSPORTATION DEPARTMENT  
 ENGINEERING DIVISION

				BENCH MARK DATA SHEET		ELEV.
						22.73
REVISIONS				DATE DRAWN: 2-3-87 BY: RJJ		BM. NO.
				REF: SWFWMD HFH .182 DATE 10/81		117A
				ELEV. BASED ON B.M. NO. NOS		