

**DESCRIPTION OF BENCH MARK**

Designation	F 253	State	Florida	County	Sarasota
Nearest town	Sarasota	County	Sarasota	Chief of party	R. Cerrish
Distance and direction from nearest town	9.5 mile southeast	Leveling date	1/66	Stamping	F 253 1965
Character of mark	A C&GS Bench Mark Disk	Established by	C&GS	Elevation	EL 18,327

Detailed description: 9.5 miles southeast along the Seaboard Air Line Railroad from the station at Sarasota, also 9.6 miles north along the Seaboard Air Line Railroad from the station at Venice, 2.2 miles south of the crossing of Clark Road (a black topped road), 0.4 mile north of the north end of a 70-foot trestle over a small stream, 47.5 feet west of the west rail of the main track, 58 feet northwest of milepost 893, 23½ feet southwest of a telephone pole, 0.5 foot east of the right-of-way fence, 2 feet north of a steel witness post, about 3 feet below the level of the track and is a disk welded on a 3½-inch by 4-foot iron pipe projecting 0.7 foot.

**SARASOTA COUNTY  
TRANSPORTATION DEPARTMENT  
ENGINEERING DIVISION**

**BENCH MARK  
DATA SHEET**

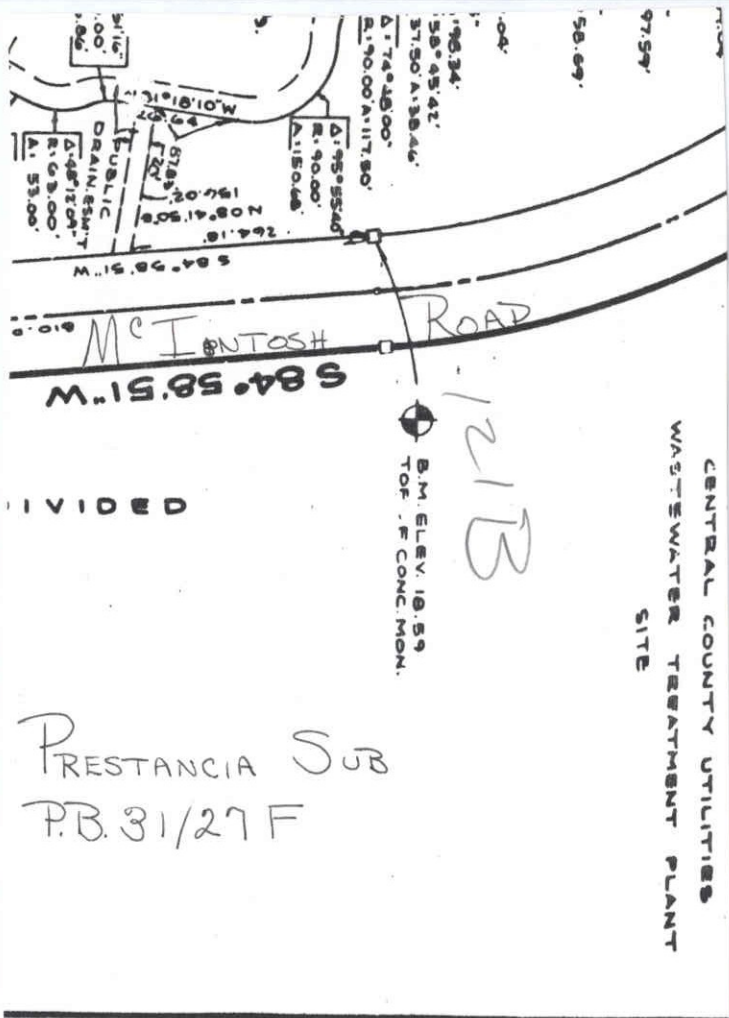
ELEV.  
18,327  
BM. NO.

DATE DRAWN: 3-12-87 BY: RJJ

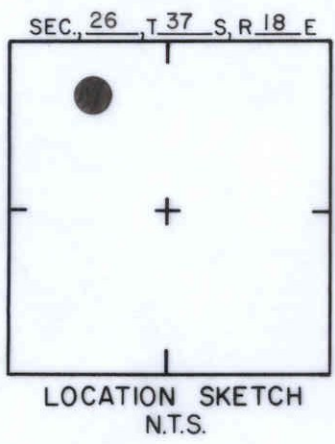
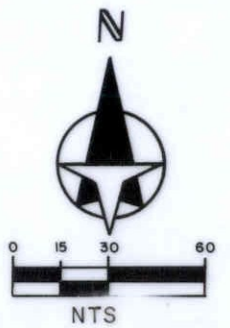
REF: NOS F253 DATE 1/66

121

				DATE DRAWN: 3-12-87		BY: RJJ	
				REF: NOS F253		DATE 1/66	
REVISIONS				ELEV. BASED ON B.M. NO.			



PRESTANCIA SUB  
P.B. 31/27 F

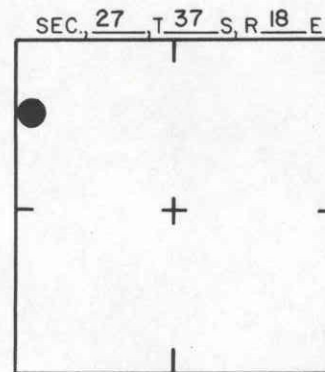
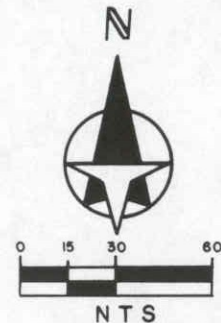
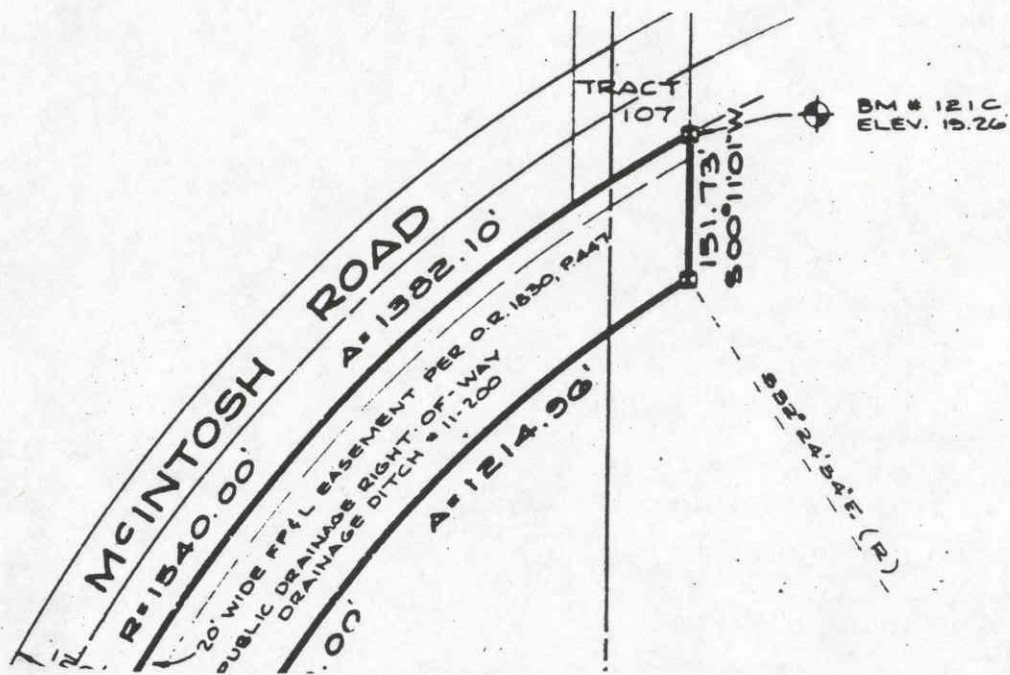


SARASOTA COUNTY  
TRANSPORTATION DEPARTMENT  
ENGINEERING DIVISION

REVISIONS				BENCH MARK DATA SHEET		ELEV.
				DATE		TYPE
				REF:	SWN	BM. NO.
				ELEV. BASED ON B.M. NO.		121B

DATE DRAWN: 3-17-87 BY: CAR

REF: SWN DATE

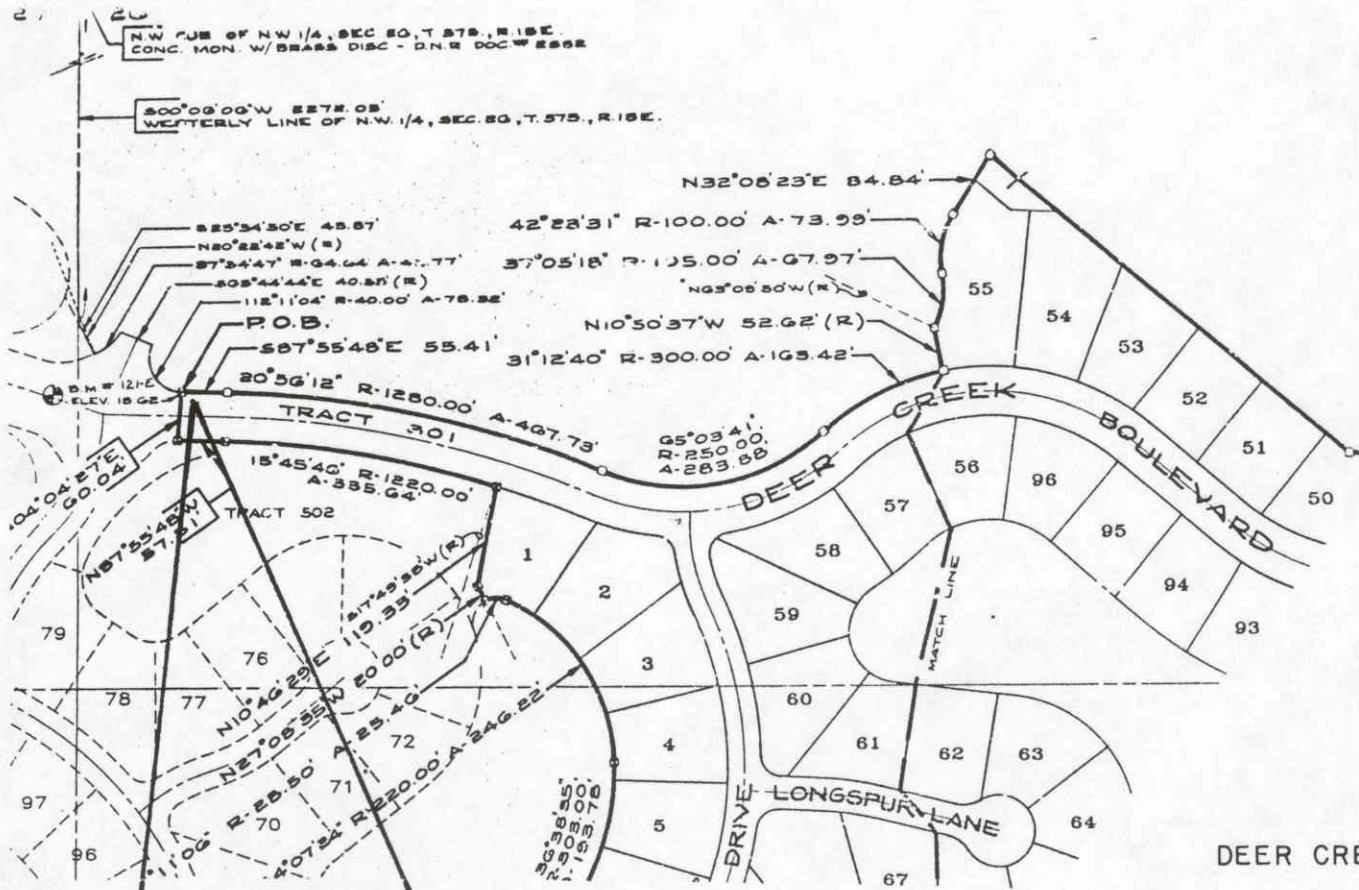


LOCATION SKETCH  
N.T.S.

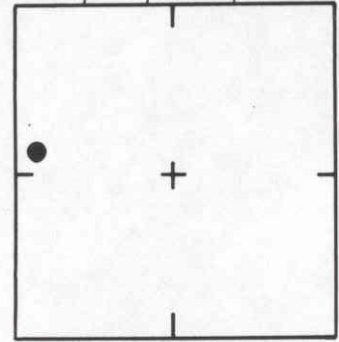
PLAT BOOK 32 PAGE 35A  
 SHEET 2 OF 3 SHEETS  
**CROCKER'S LAKE SUBDIVISION**  
 IN SECTIONS 26, 27, 34 & 35, T.37S., R.18E.  
 SARASOTA COUNTY, FLORIDA

<b>SARASOTA COUNTY</b> TRANSPORTATION DEPARTMENT ENGINEERING DIVISION			
<b>BENCH MARK DATA SHEET</b>			ELEV. 19.26
DATE DRAWN: 8/12/88 BY: SCB			BM. NO.
DATE	TYPE	F.B. PG.	BY
REF: F.B. PG. DATE			121 C
<b>REVISIONS</b>			ELEV. BASED ON B.M. NO. N.O.S. F-253/J-253





SEC. 26, T. 37 S, R. 18 E



LOCATION SKETCH  
N.T.S.

DEER CREEK UNIT 2 PB 33/19

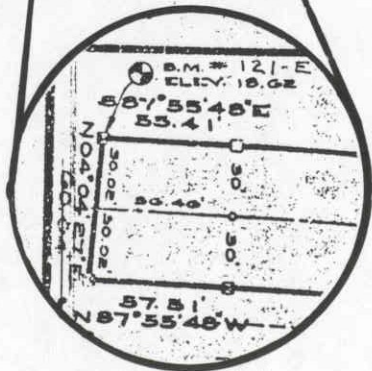


EXHIBIT "A"

DESCRIPTION;

CONCRETE MONUMENT  
 P.R.M. PLS. #3924

SARASOTA COUNTY  
 TRANSPORTATION DEPARTMENT  
 ENGINEERING DIVISION

BENCH MARK  
 DATA SHEET

ELEV.  
 18.62'  
 BM. NO.

DATE DRAWN: 8-4-89 BY: SCB

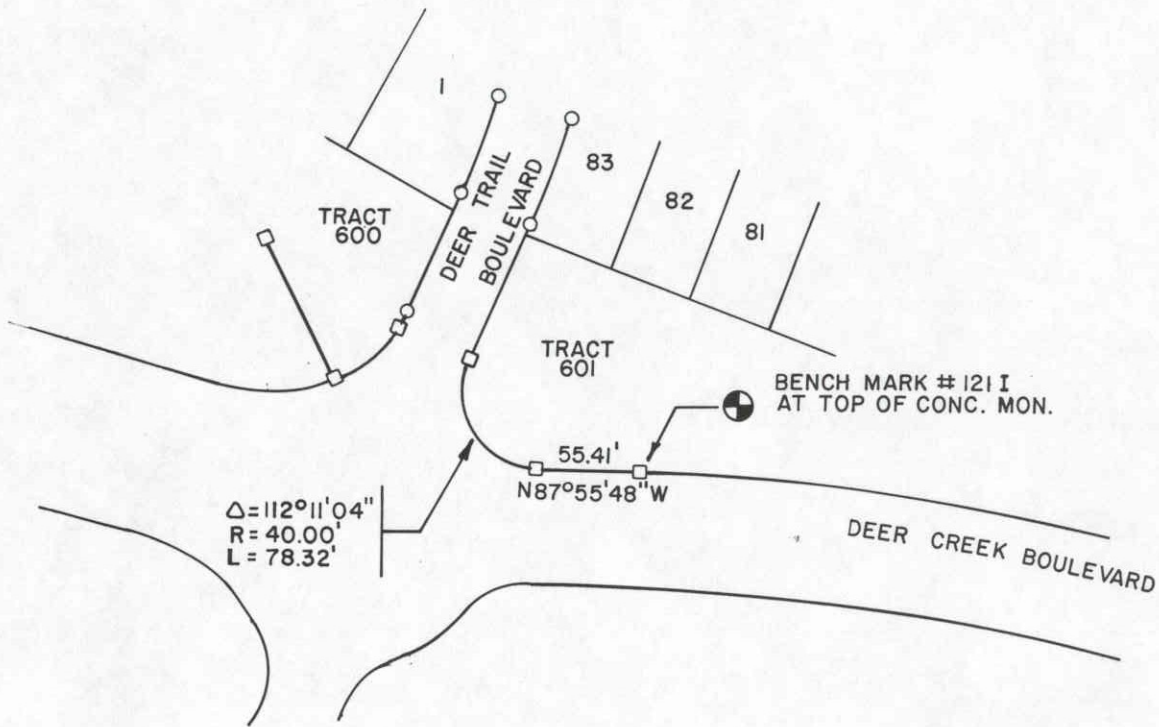
DATE	TYPE	FB. PG.	BY
------	------	---------	----

REF. FB.	PG.	DATE
----------	-----	------

REVISIONS

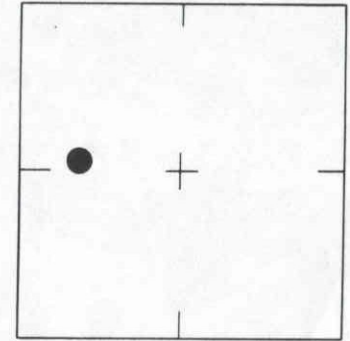
ELEV. BASED ON B.M. NO. NOS J253 F253

121E



SCALE: N.T.S.

SEC. 26 , T. 37 S, R. 18 E



LOCATION SKETCH  
N.T.S.

VILLAS AT DEER CREEK

<b>SARASOTA COUNTY</b> TRANSPORTATION DEPARTMENT ENGINEERING DIVISION, SURVEY/MAPPING SECTION		
REVISIONS / REMARKS    	<b>BENCH MARK DATA SHEET</b>	ELEV.  <b>18.33'</b>
	DATE DRAWN: <b>9-27-90</b> BY: <b>SDS</b>	B.M. NO.
	REF.: <b>P.B. 34</b> PG. <b>8</b> DATE: <b>3-27-90</b>	<b>121 I</b>
	SET BY: <b>S,W,&amp;N INC.</b>	ELEV. BASED ON B.M. NO. <b>N.O.S F-253</b>

319283