

DESCRIPTION OF BENCH MARK

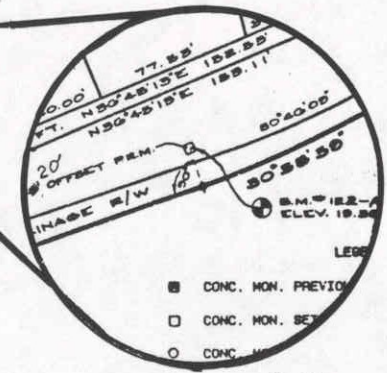
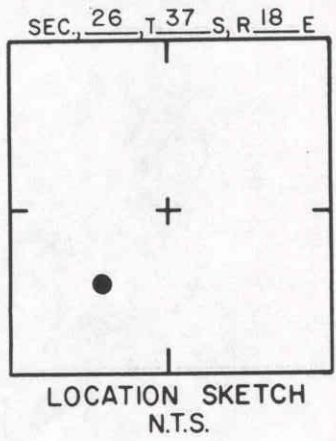
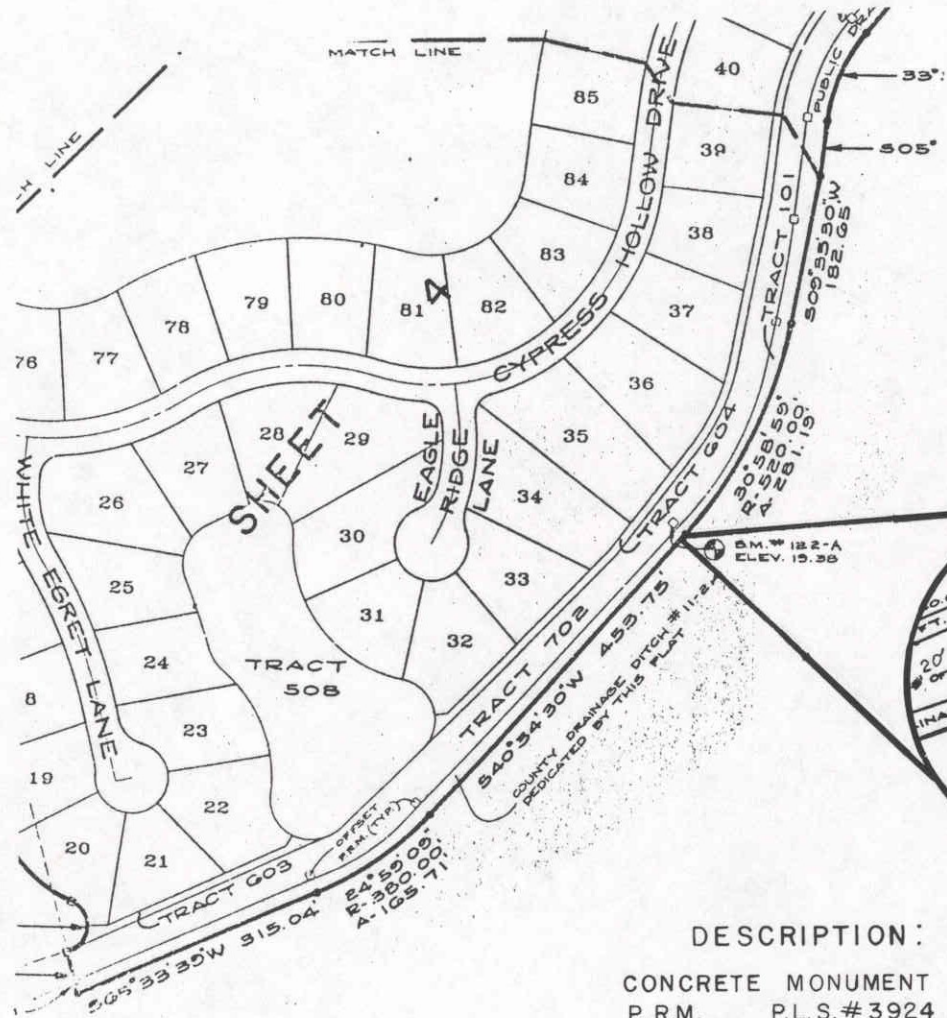
Designation R 252 State Florida County Sarasota
 Nearest town Venice County Sarasota Chief of party R. Gerrish
 Distance and direction from nearest town 8.7 mile north Levelling date 1/66
 Character of mark A C&GS Bench Mark Disk Stamping R 252 1965
 Established by C&GS Et. 17.474

Detailed description
 8.7 miles north along the Seaboard Air Line Railroad from the station at Venice, 1.3 miles north of the crossing of a private road, 0.1 mile north of milepost 894, 59.5 feet west of the west rail of the main track, 11 1/2 feet west of the fourth telephone pole north of the milepost, 10 1/2 feet west of a fence corner, 1 foot south of the fence line, 1.5 feet east of a metal witness post, about 2 feet below the level of the track and set in the top of a concrete post projecting 0.3 foot.

SARASOTA COUNTY
 TRANSPORTATION DEPARTMENT
 ENGINEERING DIVISION

BENCH MARK DATA SHEET		ELEV.
		17,474
DATE DRAWN: 3-12-87 BY: RJJ		BM. NO.
REF: NOS R 252 DATE 1/66		122
ELEV. BASED ON B.M. NO.		

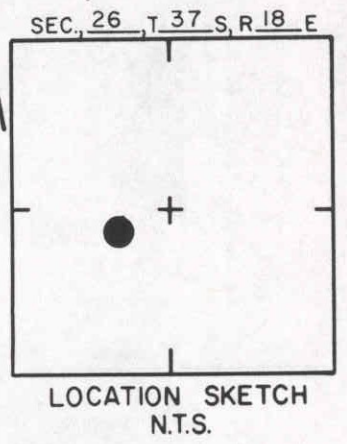
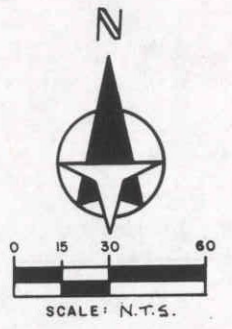
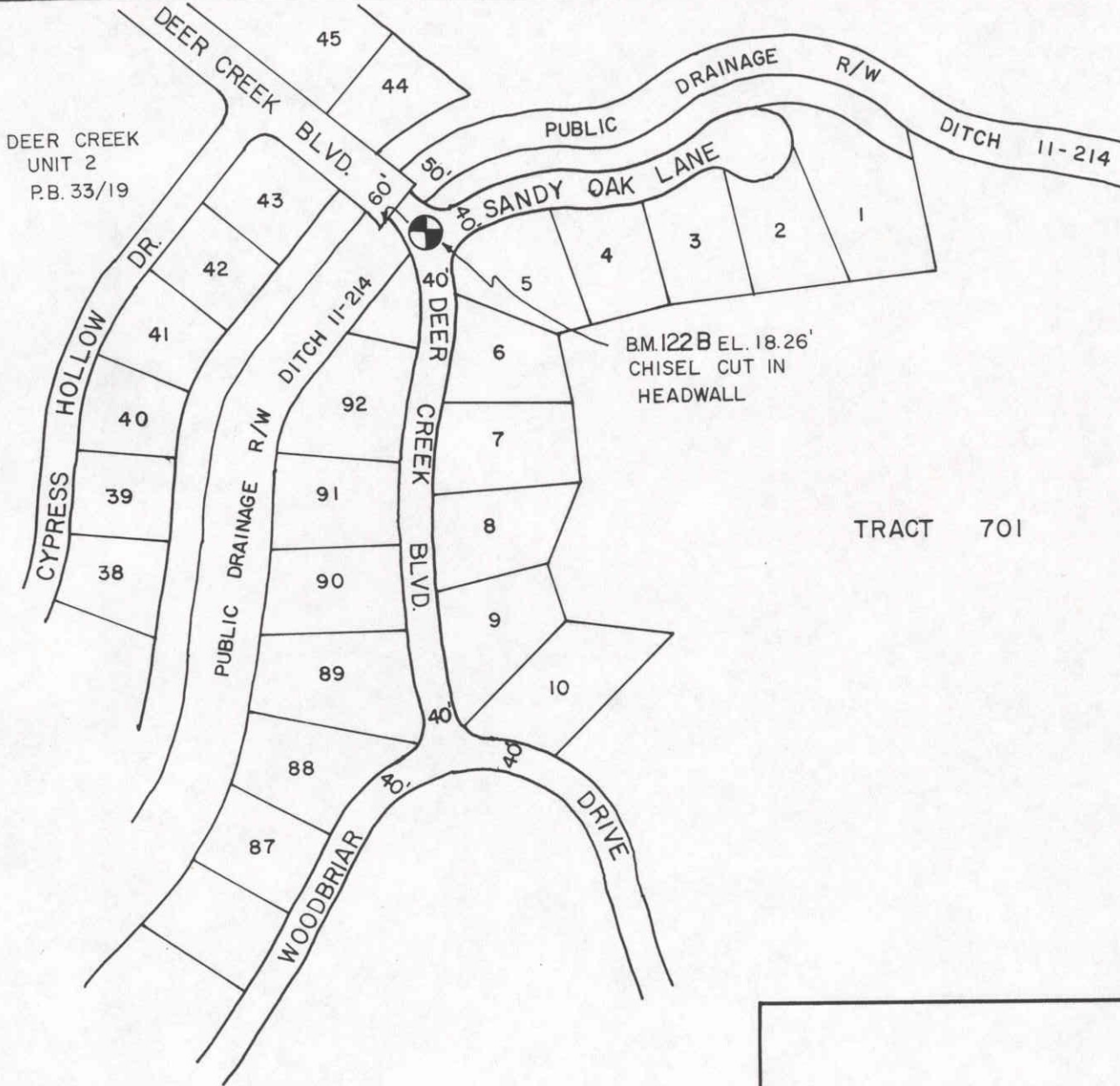
DATE	TYPE	FB. PG.	BY
REVISIONS			



DESCRIPTION:
 CONCRETE MONUMENT
 P.R.M. P.L.S.# 3924

SARASOTA COUNTY TRANSPORTATION DEPARTMENT ENGINEERING DIVISION		ELEV.
		19.38'
BENCH MARK DATA SHEET		BM. NO.
DATE DRAWN: 8-4-89	BY: SCB	122 A
REF: FB.	PG.	DATE
ELEV. BASED ON B.M. NO. NOS		F 253 J 253

DATE	TYPE	FB. PG.	BY
REVISIONS			



TRACT 701

BM. 122 B EL. 18.26'
CHISEL CUT IN
HEADWALL

DEER CREEK UNIT 3 P.B. 34/2-26

SARASOTA COUNTY
TRANSPORTATION DEPARTMENT
ENGINEERING DIVISION

**BENCH MARK
DATA SHEET**

ELEV.

18.26'

DATE DRAWN: 3-15-90 BY: KLP

BM. NO.

SET BY: S.W.N.

122 B

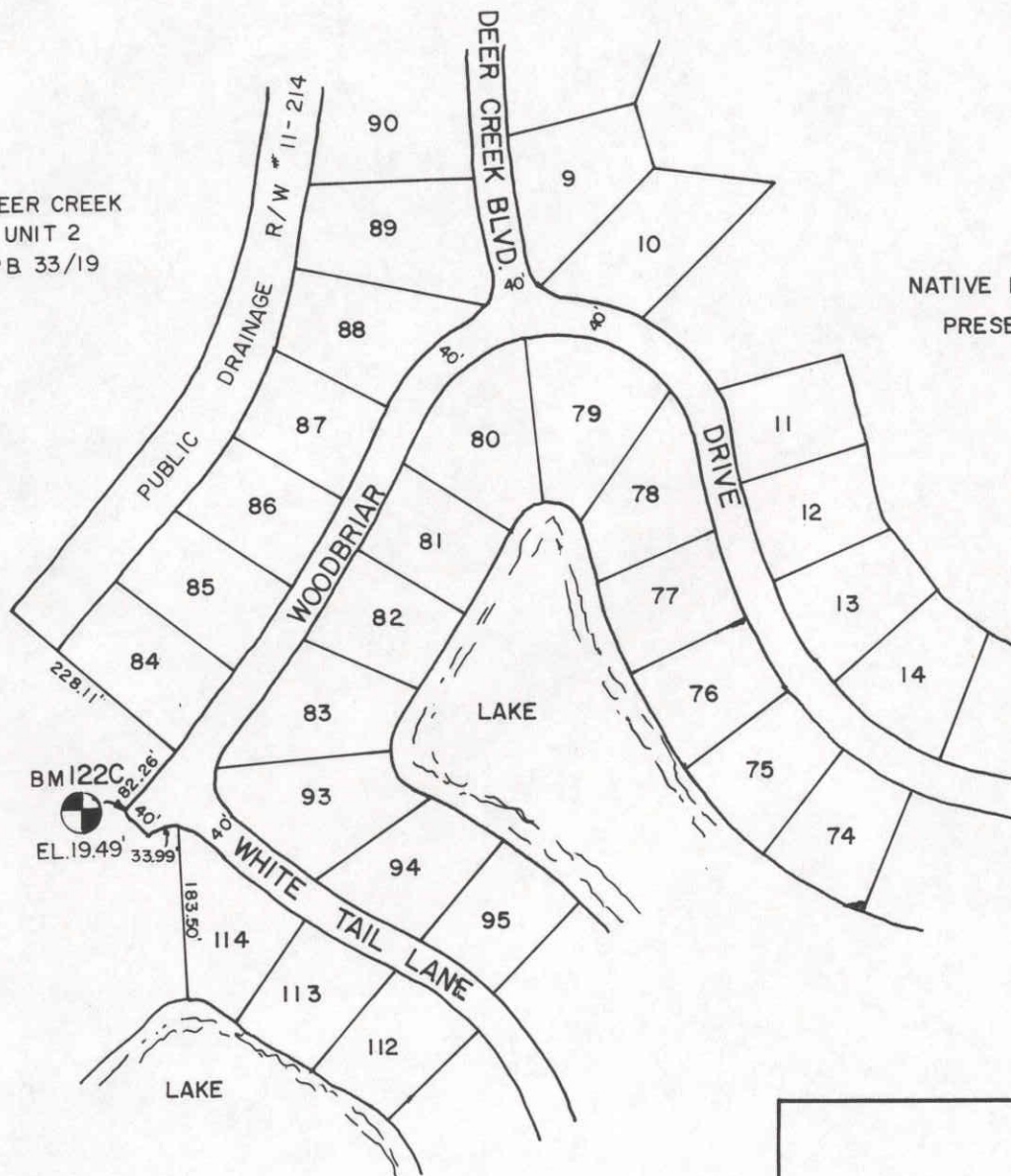
ELEV. BASED ON B.M. NO(NOS) F-253 & J-253

DATE	TYPE	FB. PG.	BY
------	------	---------	----

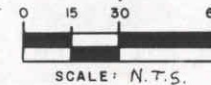
REVISIONS

12 B

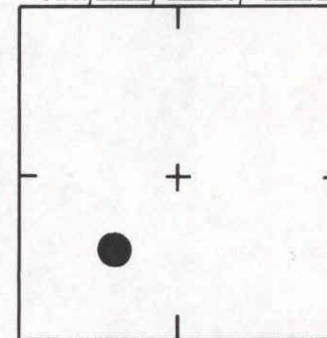
DEER CREEK
UNIT 2
P.B. 33/19



NATIVE HABITAT &
PRESERVE AREA



SEC. 26, T. 37 S, R. 18 E



LOCATION SKETCH
N.T.S.

DEER CREEK UNIT 3 P.B. 34/2-2G

SARASOTA COUNTY
TRANSPORTATION DEPARTMENT
ENGINEERING DIVISION

**BENCH MARK
DATA SHEET**

ELEV.

19.49'

BM. NO.

122C

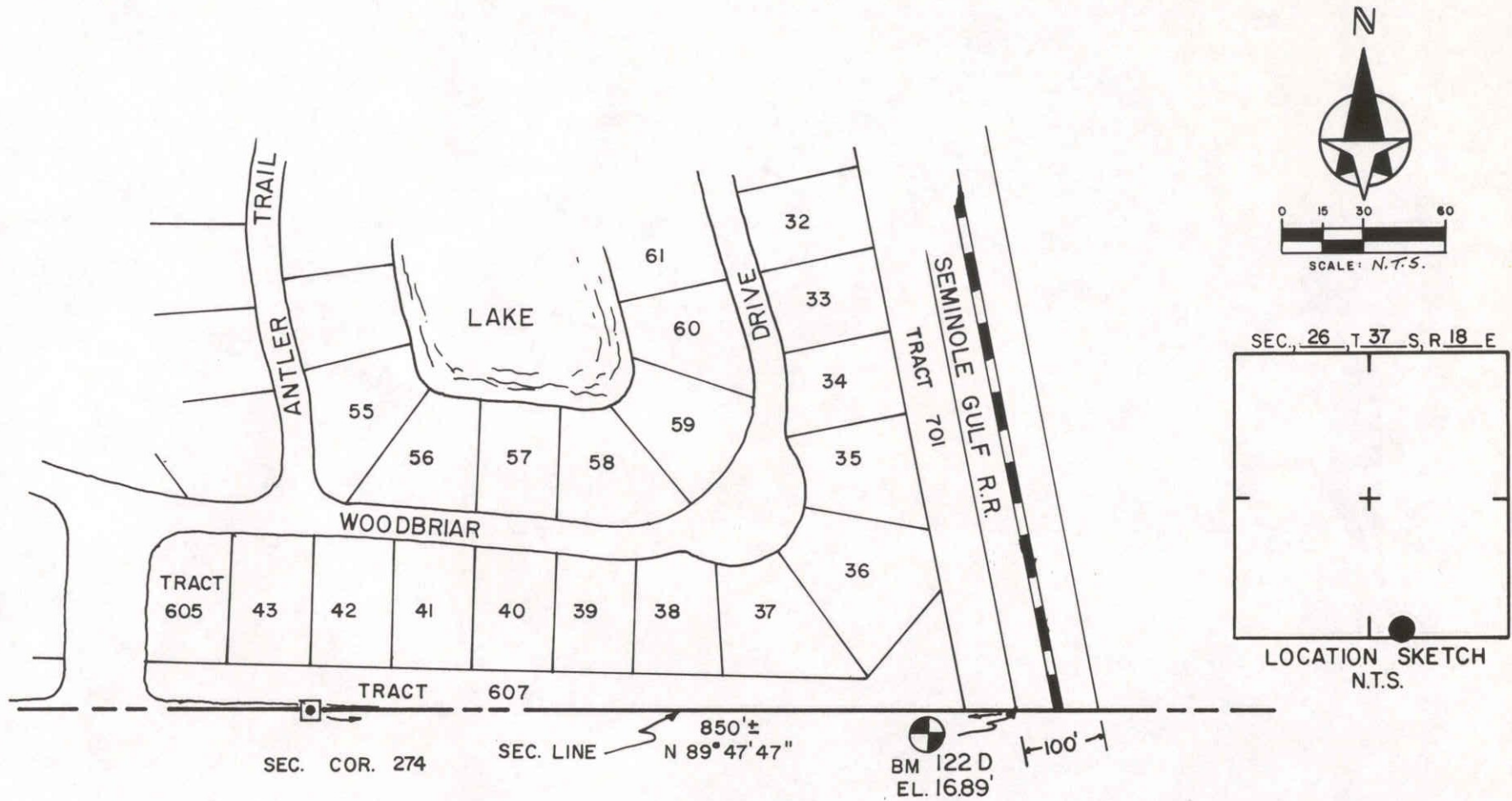
DATE DRAWN: 3-16-90 BY: KLP

SET BY: S.W.N.

ELEV. BASED ON B.M. NO(NOS) F-253 & J-253

DATE	TYPE	FB. PG.	BY
REVISIONS			

122C



DEER CREEK UNIT 3 PB. 34/2-26

SARASOTA COUNTY
TRANSPORTATION DEPARTMENT
ENGINEERING DIVISION

**BENCH MARK
DATA SHEET**

ELEV.

16.89'

BM. NO.

122 D

DATE DRAWN: 3-16-90

BY: KLP

SET BY: S.W.N.

ELEV. BASED ON BM. NO.(NOS) F- 253 & J- 253

DATE	TYPE	FB. PG.	BY
------	------	---------	----

REVISIONS