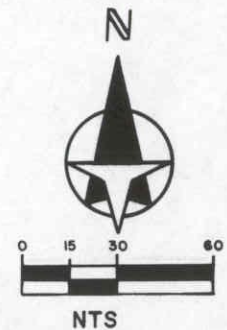
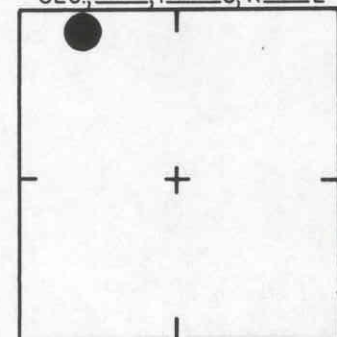


PRESTANCIA SUB
P.B. 31/27G

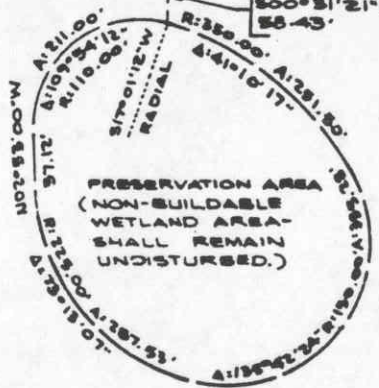
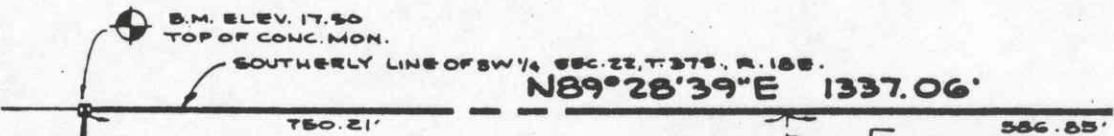
123A



SEC. 27 T. 37 S. R. 18 E



LOCATION SKETCH
N.T.S.



14 CONDOMINIUM
SEC. 27, T. 37 S., R. 18 E
342.25
762.23

PARCEL M

SARASOTA COUNTY
TRANSPORTATION DEPARTMENT
ENGINEERING DIVISION

BENCH MARK
DATA SHEET

ELEV.

1750

DATE DRAWN: 3-17-87

BY: CAR

BM. NO.

DATE	TYPE	FB. PG.	BY
------	------	---------	----

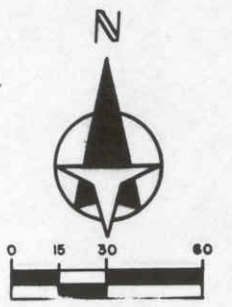
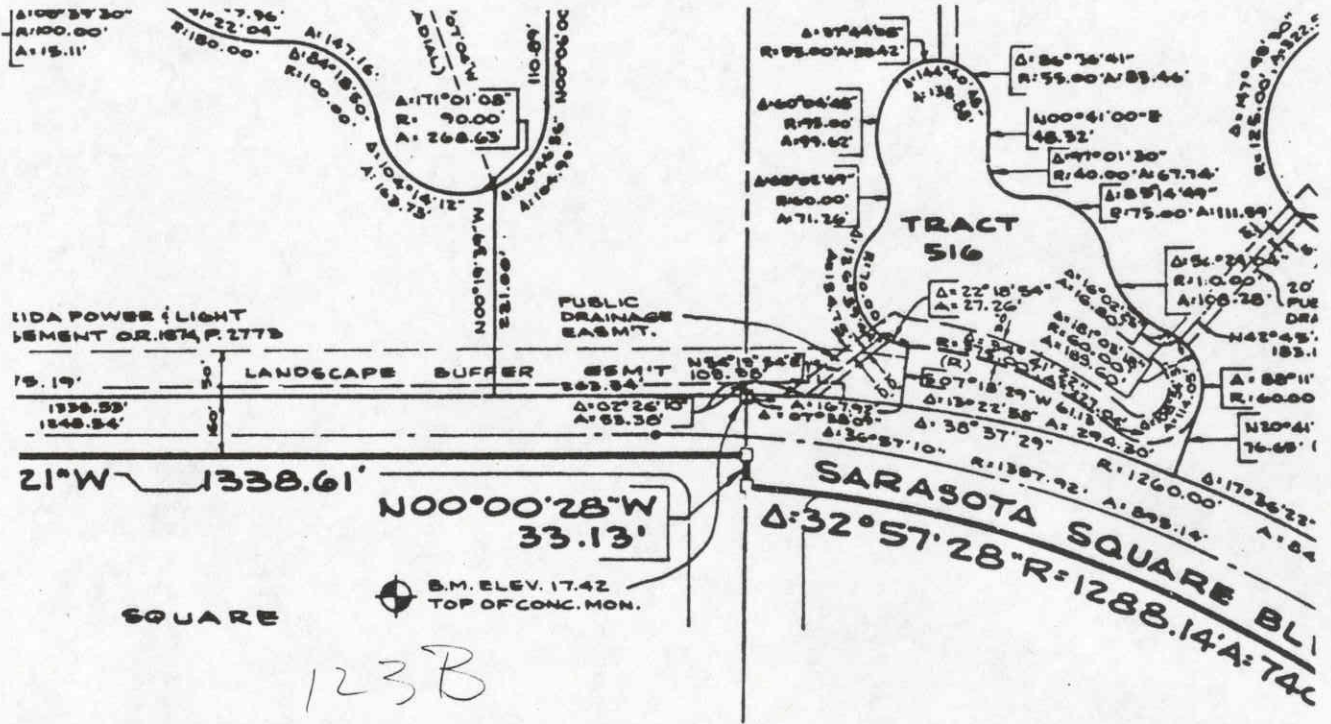
REF: SWN

DATE

123A

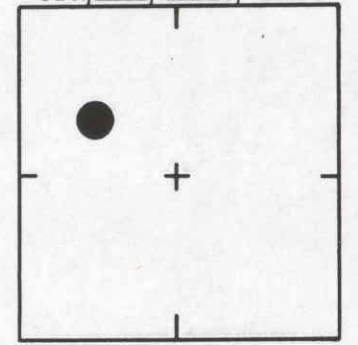
REVISIONS

ELEV. BASED ON B.M. NO.



NTS

SEC. 27 T. 37 S. R. 18 E



LOCATION SKETCH
N.T.S.

123B
 PRESTANCIA SUB
 P. 31/27G

SARASOTA COUNTY
 TRANSPORTATION DEPARTMENT
 ENGINEERING DIVISION

**BENCH MARK
 DATA SHEET**

ELEV.
 17.42
 BM. NO.

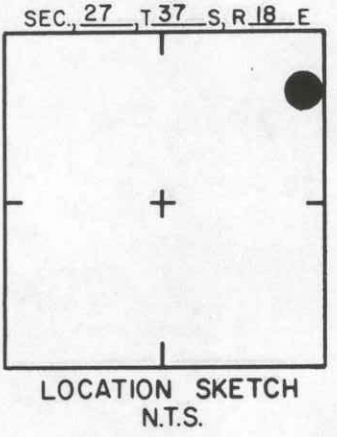
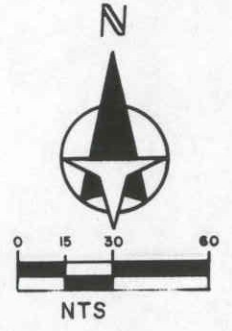
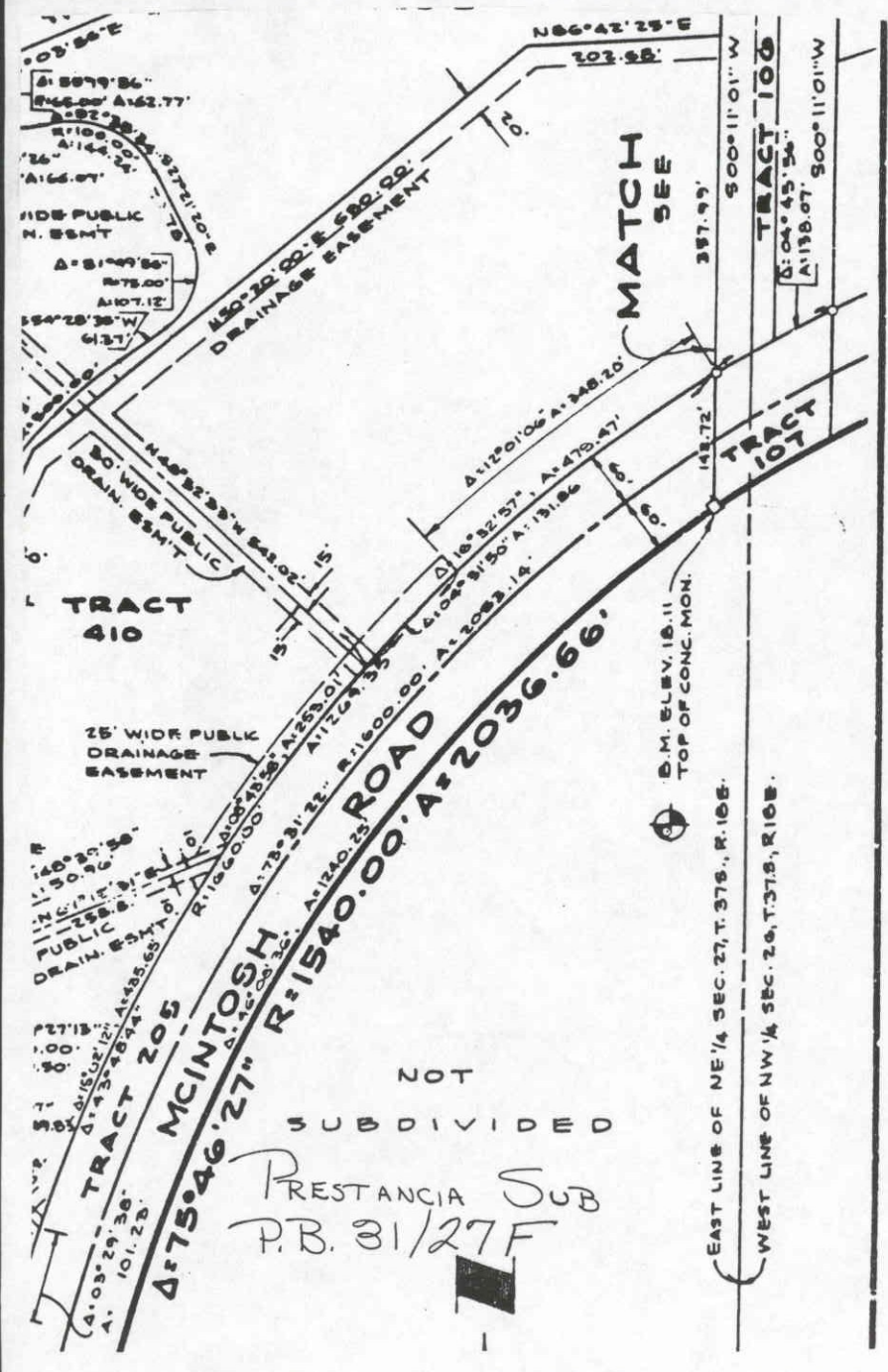
DATE DRAWN: 3-17-87 BY: CAR

REF: SWN DATE

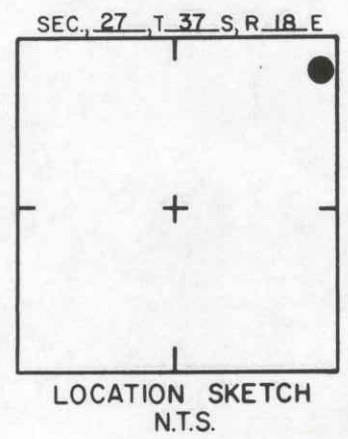
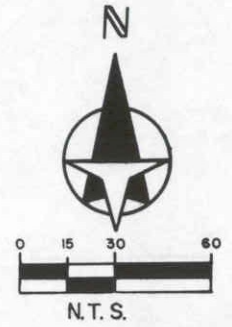
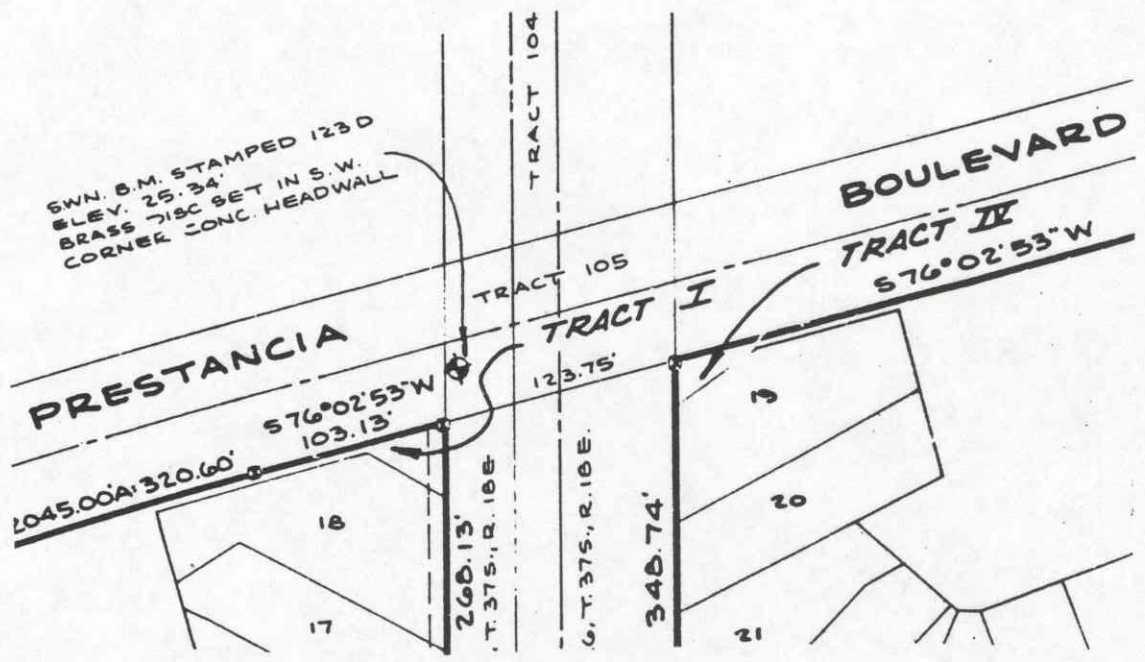
123B

DATE	TYPE	F.B. PG.	BY
REVISIONS			

ELEV. BASED ON B.M. NO.



				SARASOTA COUNTY TRANSPORTATION DEPARTMENT ENGINEERING DIVISION		ELEV.
						18.11
				BENCH MARK DATA SHEET		BM. NO.
				123C		
DATE	TYPE	F.B. PG.	BY	DATE DRAWN: 3-17-87	BY: CAR	
REVISIONS				REF: SWN	DATE	
				ELEV. BASED ON B.M. NO.		



SARASOTA COUNTY
 TRANSPORTATION DEPARTMENT
 ENGINEERING DIVISION

**BENCH MARK
 DATA SHEET**

ELEV.

25.34

DATE DRAWN: 10-6-87 BY: BAG

BM. NO.

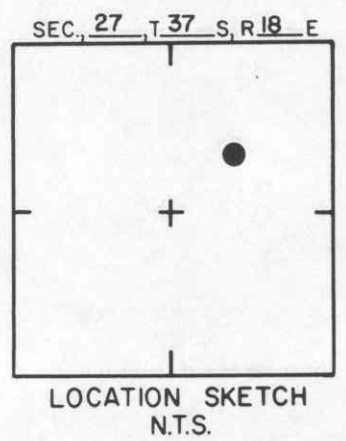
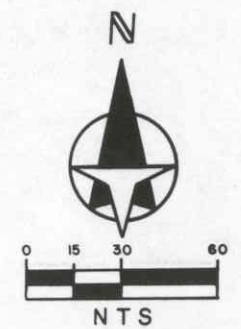
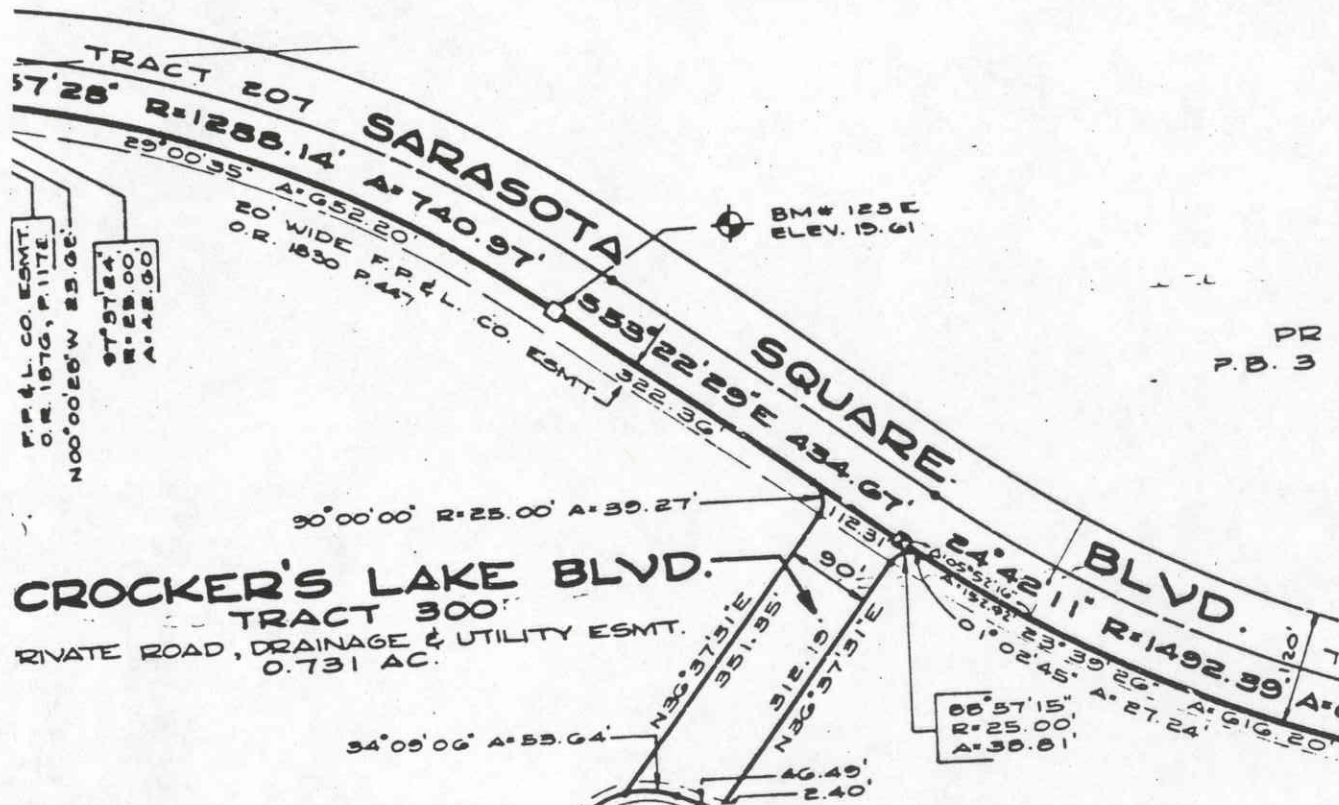
DATE TYPE FB. PG. BY

REF: FB. PG. DATE

123D

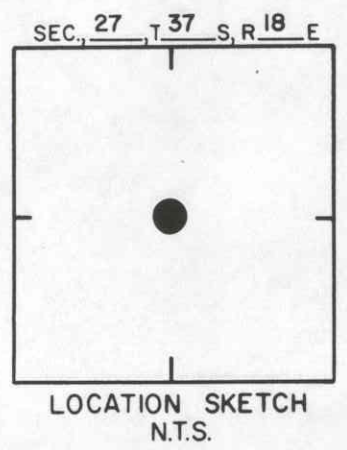
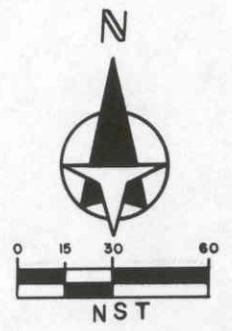
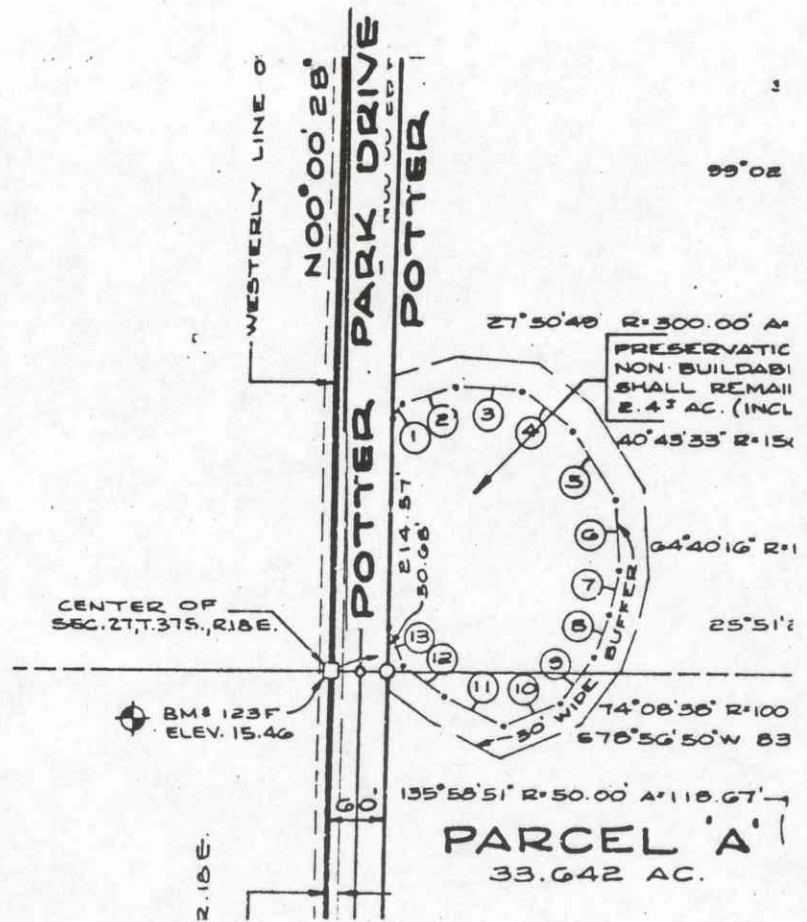
REVISIONS

ELEV. BASED ON BM. NO.



PLAT BOOK 32 PAGE 35A
SHEET 2 OF 3 SHEETS
CROCKER'S LAKE SUBDIVISION

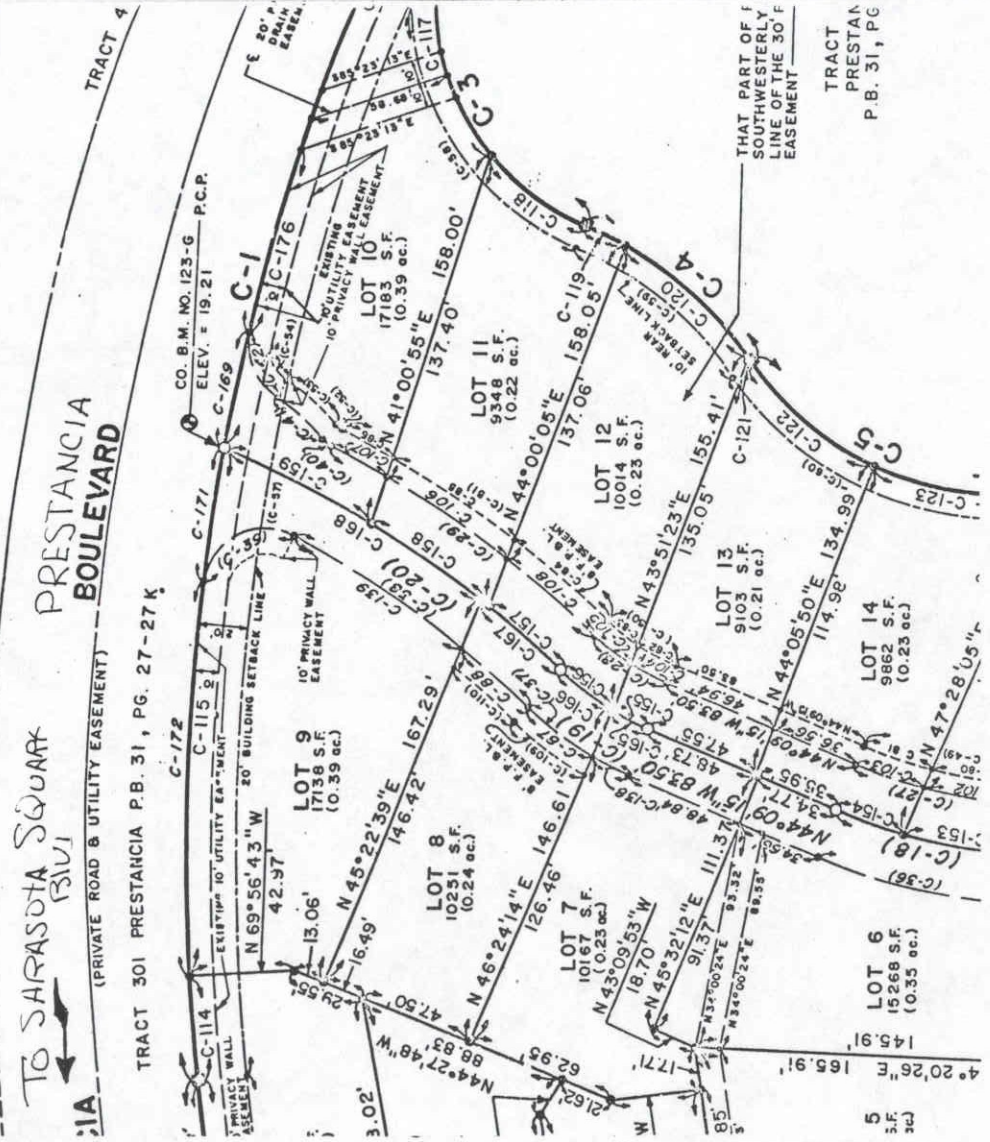
		SARASOTA COUNTY TRANSPORTATION DEPARTMENT ENGINEERING DIVISION		ELEV.
				19.61
		BENCH MARK DATA SHEET		BM. NO.
				123 E
DATE		DATE DRAWN: 8/15/88	BY: SCB	
TYPE		REF: F.B.	PG.	DATE
F.B. PG.		ELEV. BASED ON B.M. NO. NOS F-253/J-253		
BY				
REVISIONS				



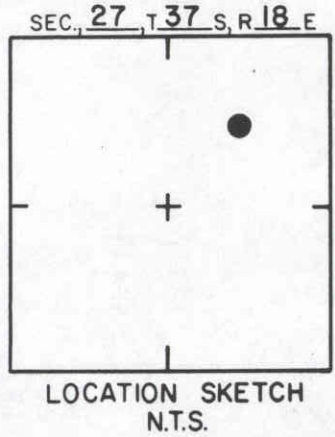
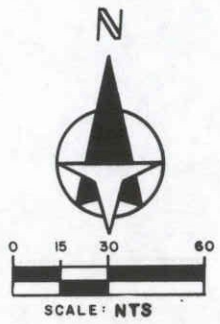
PLAT BOOK 32 PAGE 35A
SHEET 2 OF 3 SHEETS
CROCKER'S LAKE SUBDIVISION

SARASOTA COUNTY			
TRANSPORTATION DEPARTMENT			
ENGINEERING DIVISION			
BENCH MARK DATA SHEET			ELEV.
			15.46
DATE DRAWN: 8/15/88 BY: SCB			BM. NO.
DATE	TYPE	F.B. PG.	BY
		REF: F.B.	PG. DATE
REVISIONS			123 F
			ELEV. BASED ON B.M. NO. NOS F-253/J-253

VILLA FIORE, FLORIDA



THAT PART OF F
SOUTHWESTERLY
LINE OF THE 30' F
EASEMENT
TRACT
PRESTAN
P.B. 31, PG



VILLA FIORE P.B 33/5-A

SARASOTA COUNTY TRANSPORTATION DEPARTMENT ENGINEERING DIVISION				ELEV.
				19.21'
BENCH MARK DATA SHEET		DATE DRAWN: 3-1-89 BY: SCB		BM. NO.
DATE	TYPE	F.B. PG.	BY	REF: F.B. PG. DATE
REVISIONS				ELEV. BASED ON B.M. NO. NOS B.M. F-253 & J-253
				123-G