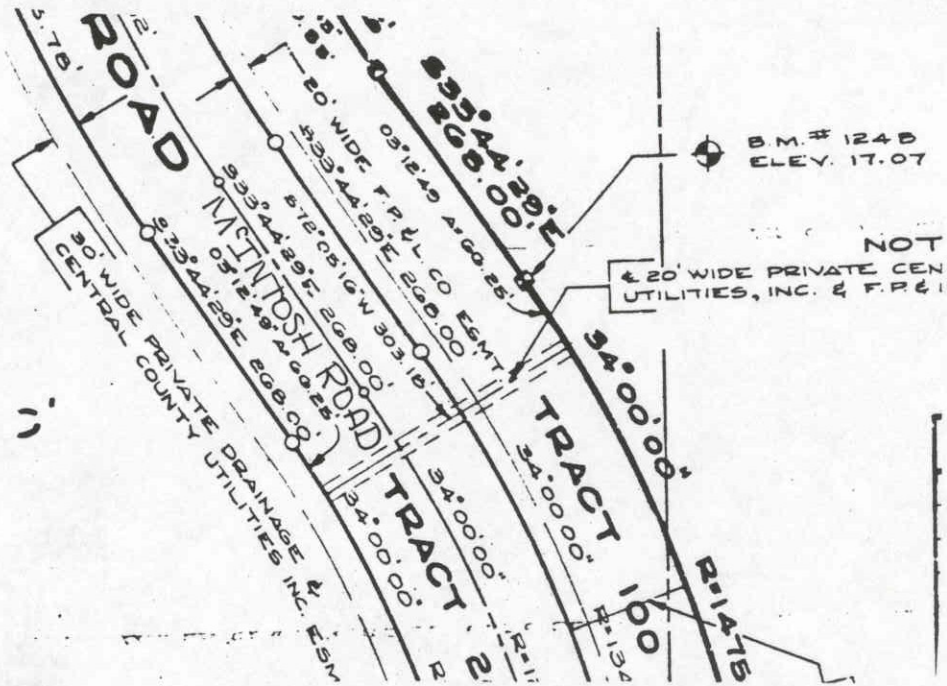


PLAT BOOK 32 PAGE 35A
 SHEET 2 OF 3 SHEETS
CROCKER'S LAKE SUBDIVISION
 IN SECTIONS 26, 27, 34 & 35, T.37S., R.18E.
 SARASOTA COUNTY, FLORIDA

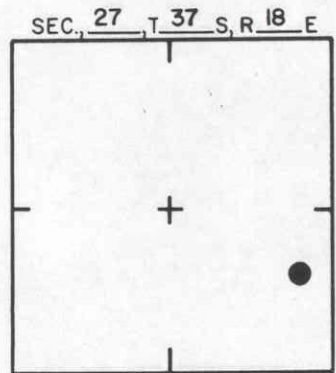
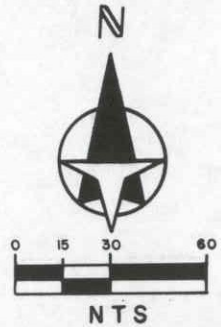
SARASOTA COUNTY			
TRANSPORTATION DEPARTMENT			
ENGINEERING DIVISION			
BENCH MARK DATA SHEET			ELEV.
			15.05
DATE DRAWN: 8/15/88 BY: SCB			BM. NO.
DATE	TYPE	FB. PG.	BY
REF: FB. PG. DATE			124A
ELEV. BASED ON B.M. NO. NOS F-253/J-253			

REVISIONS			



B.M. # 124 B
ELEV. 17.07

NOT
20' WIDE PRIVATE CEN
UTILITIES, INC. & F.P.E.I



LOCATION SKETCH
N.T.S.

PLAT BOOK 32 PAGE 35A
SHEET 2 OF 3 SHEETS

CROCKER'S LAKE SUBDIVISION
IN SECTIONS 26, 27, 34 & 35, T.37S., R.18E.
SARASOTA COUNTY, FLORIDA

SARASOTA COUNTY
TRANSPORTATION DEPARTMENT
ENGINEERING DIVISION

**BENCH MARK
DATA SHEET**

ELEV.

17.07

BM. NO.

124 B

DATE DRAWN: 8/15/88 BY: SCB

REF: FB. PG. DATE

ELEV. BASED ON B.M. NO. NOS F-253/J-253

DATE	TYPE	F.B. PG.	BY
REVISIONS			

REVISIONS

TAMMIAMI TRAIL
 N 19° 16' 39" W
 195.67'

1208.29'
 S 89° 44' 29" E
CENTRAL SARASOTA PKWY.
 1142.37'

4" CONC. MON. - N.E. COR S.E. 1/4,
 S.W. 1/4, SEC 27, T 37 S, R 18 E

B.M. No. 124 C

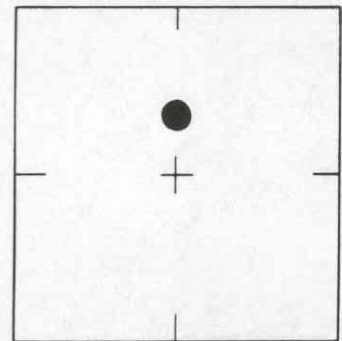
1347.42'
 N 00° 03' 38" E
 184.37'

POTTER PARK DR.



SCALE: N.T.S.

SEC. 27 , T 37 S, R 18 E



LOCATION SKETCH
 N.T.S.

PARCEL Q - INCREMENT 5

SARASOTA COUNTY
 TRANSPORTATION DEPARTMENT
 ENGINEERING DIVISION, SURVEY/MAPPING SECTION

REVISIONS / REMARKS

**BENCH MARK
 DATA SHEET**

ELEV.

15.35'

DATE DRAWN: 11-01-90 BY: SDS

B.M. NO.

REF.: 34 PG. 26 DATE: 7-31-90

124 C

SET BY: S,W & N INC.

ELEV. BASED ON B.M. NO. F-253 (NOS)