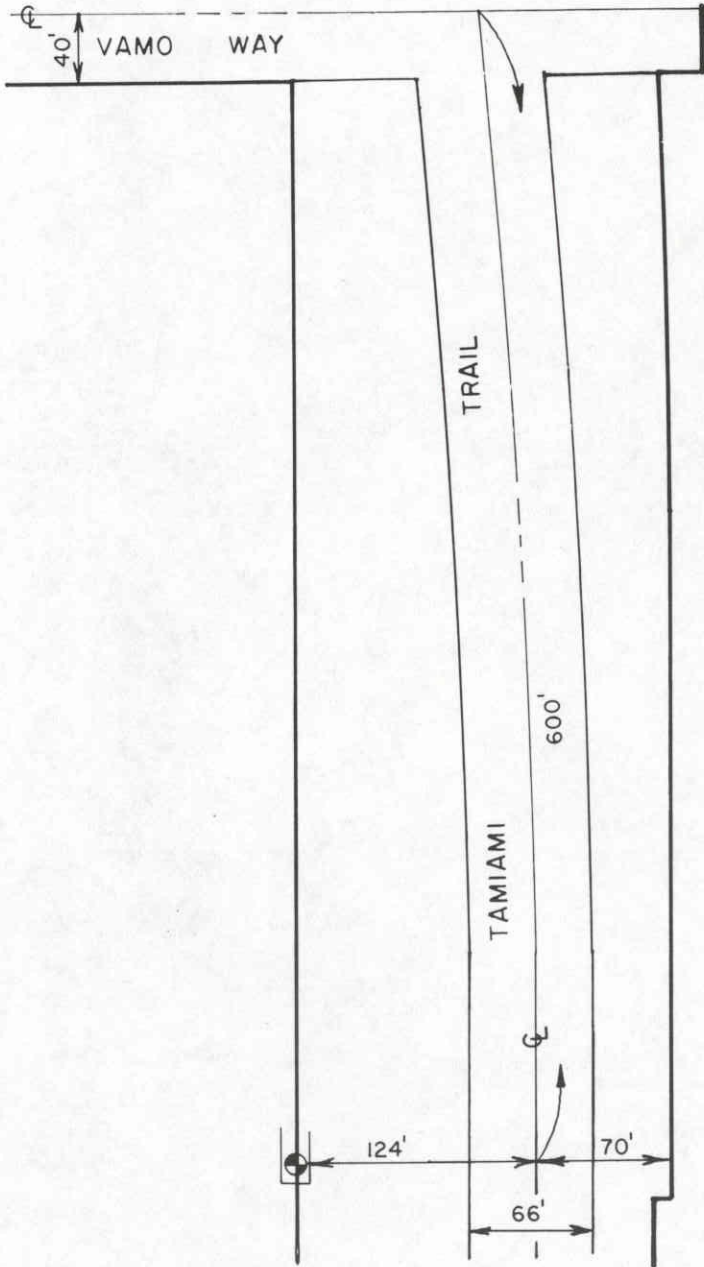


34-37-18 Sec. Line  
3-38-18

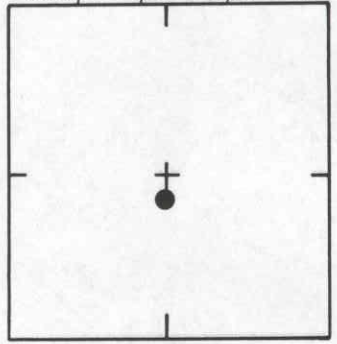
<b>SARASOTA COUNTY</b>			
TRANSPORTATION DEPARTMENT ENGINEERING DIVISION			
<b>BENCH MARK DATA SHEET</b>			ELEV. 10.24'
DATE DRAWN: 6/7/85		BY: RJJ	
REF: FB.		PG.	DATE
REVISIONS			BM. NO. 133A
ELEV. BASED ON USC & GS			

DATE	TYPE	FB. PG.	BY
REVISIONS			



SCALE: 1" = 100'

SEC. 34, T. 37 S, R. 18 E



LOCATION SKETCH  
N.T.S.

**SARASOTA COUNTY**  
TRANSPORTATION DEPARTMENT  
ENGINEERING DIVISION

**BENCH MARK  
DATA SHEET**

ELEV.

3.58'

BM. NO.

133B

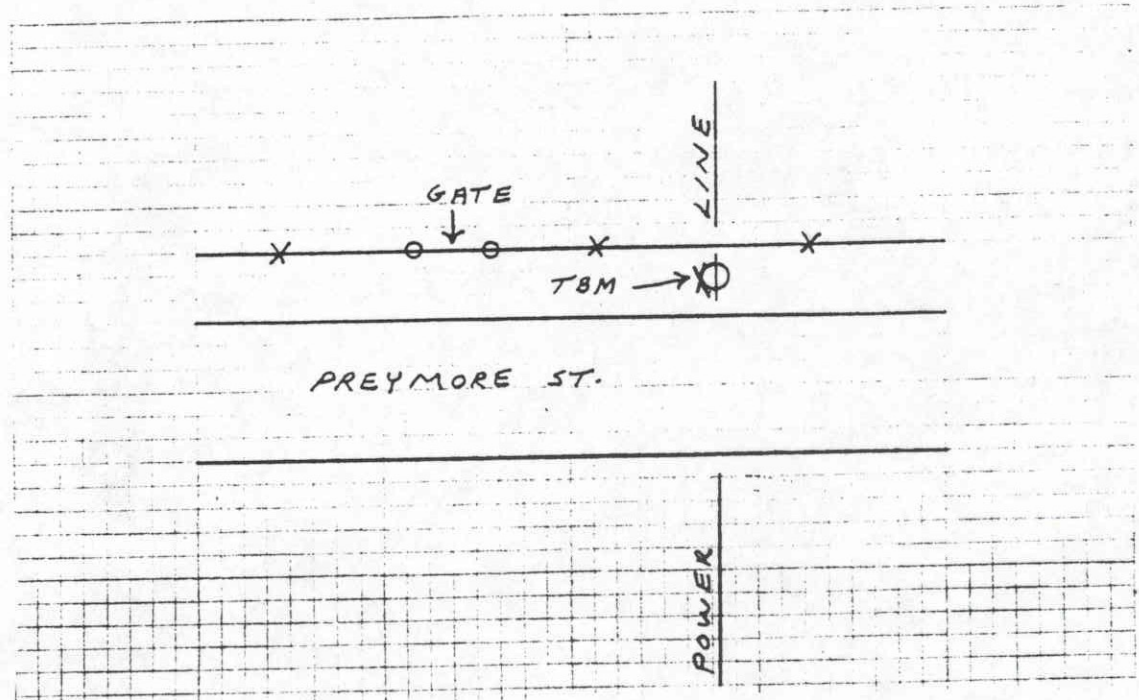
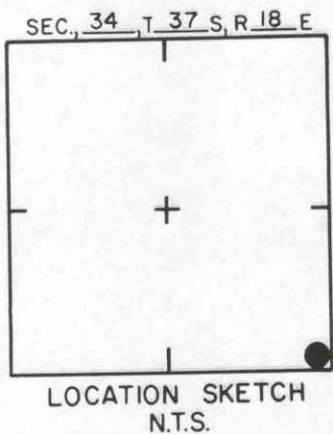
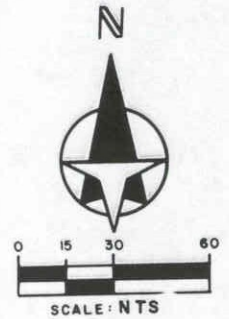
DATE DRAWN: 6/6/85 BY: RJJ

REF: F.B. PG. DATE

ELEV. BASED ON USC & GS

DATE	TYPE	FB. PG.	BY
REVISIONS			

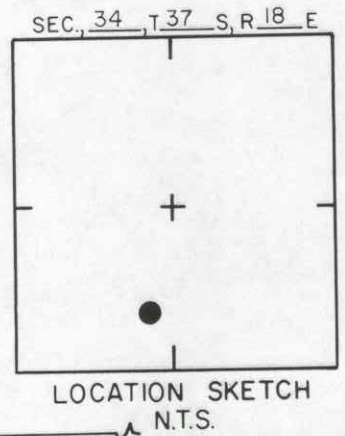
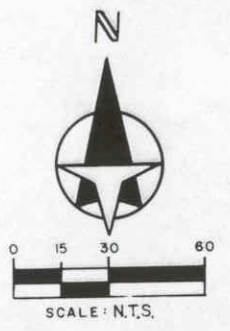
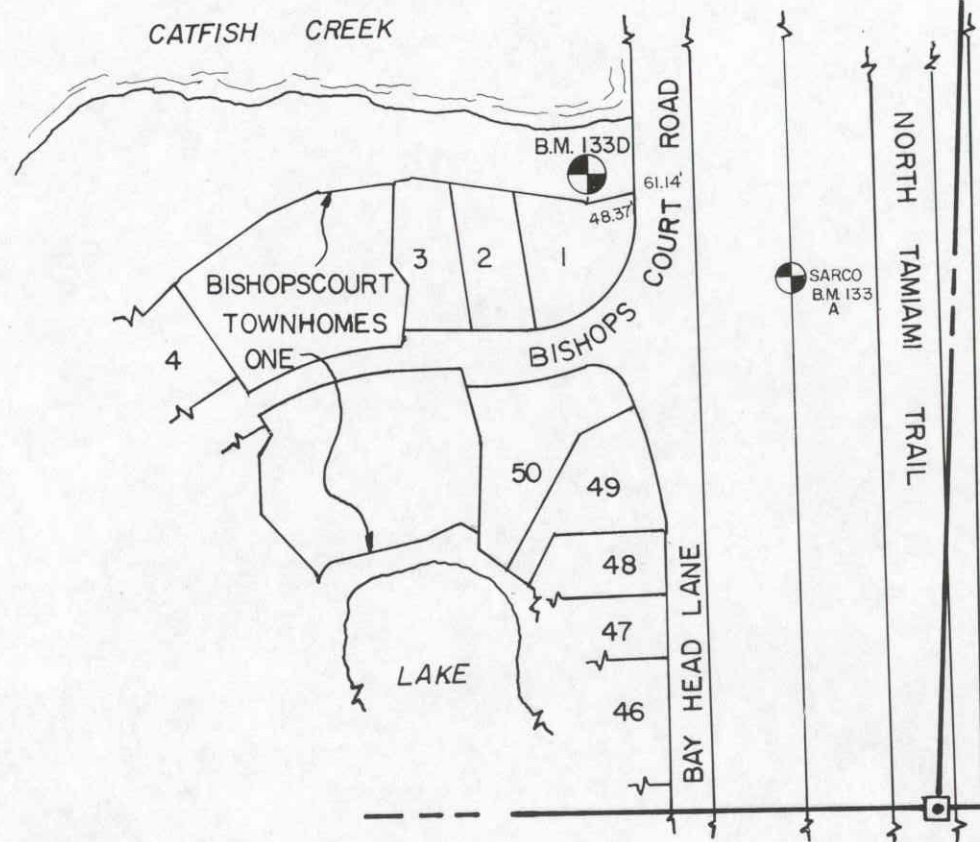
TO REACH THE MARK FROM INTER. US - 41 & PREYMORE ST.  
 GO ± 0.50 MI. E., TBM IS A RAIL ROAD SPIKE  
 IN W. SIDE OF P-POLE



				SARASOTA COUNTY TRANSPORTATION DEPARTMENT ENGINEERING DIVISION		ELEV.
						13,72
BENCH MARK DATA SHEET				DATE DRAWN: 1-30-87	BY: RJJ	BM. NO.
				REF: SWFWMD HFH 166	DATE 10/81	133C
REVISIONS				ELEV. BASED ON BM. NO. NOS		

DATE	TYPE	FB. PG.	BY
REVISIONS			





SEC. COR. SHT. NO. 211

BISHOPSCOURT AT THE OAKS PRESERVE P.B.33/28

**SARASOTA COUNTY**  
 TRANSPORTATION DEPARTMENT  
 ENGINEERING DIVISION

**BENCH MARK  
 DATA SHEET**

ELEV.

6.55'

BM. NO.

133 D

DATE DRAWN: 10-2-89 BY: KLP

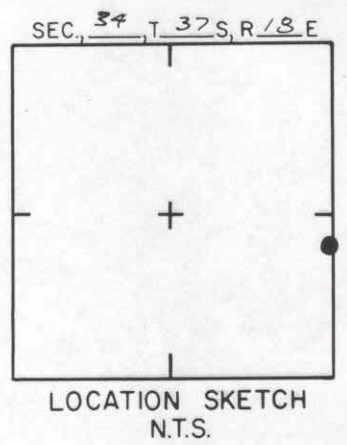
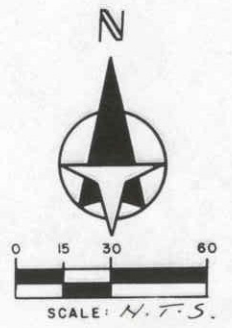
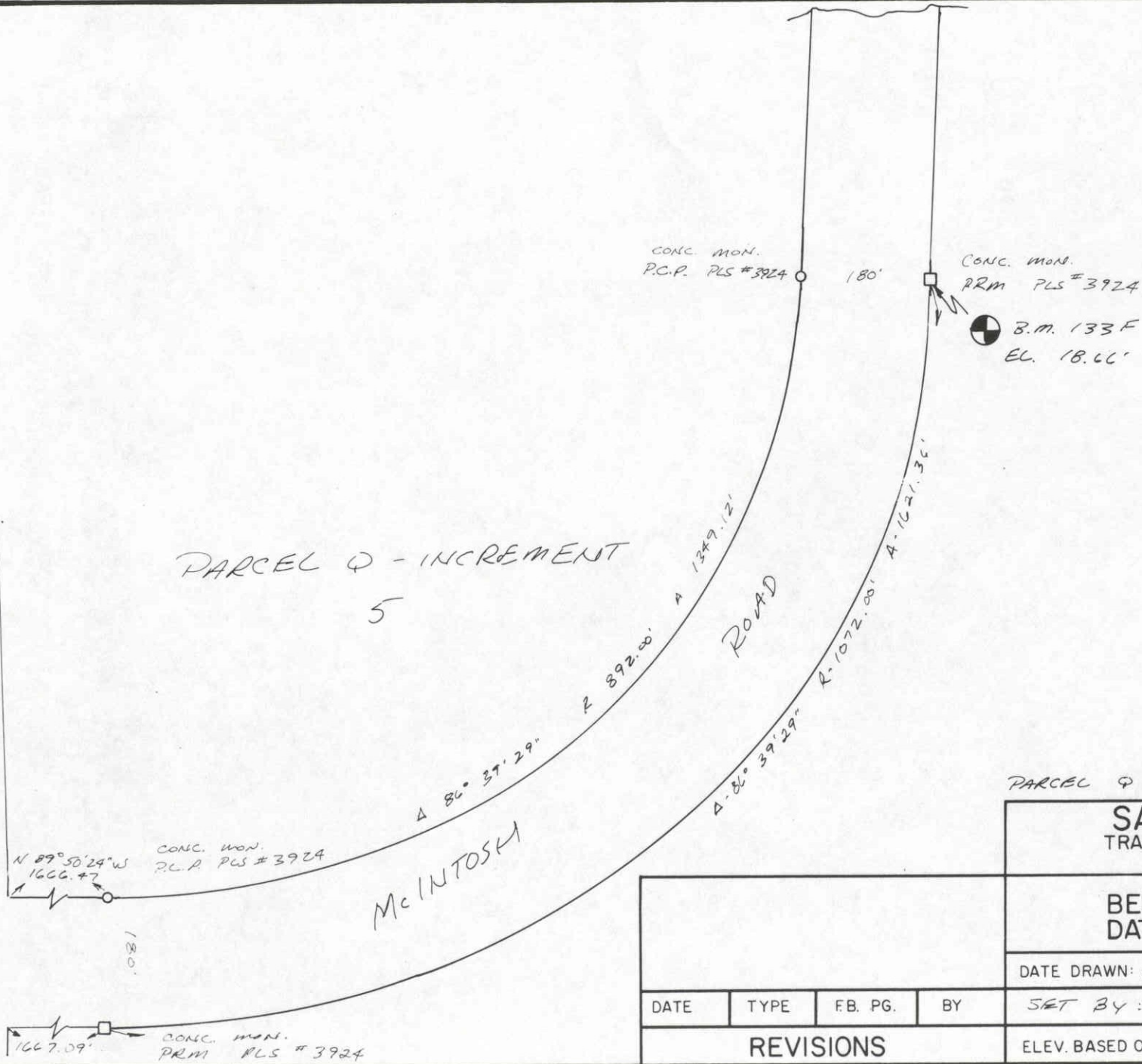
REF: FB. PG. DATE

ELEV. BASED ON BM. NO. N.G.S. C-255/1644

DATE	TYPE	FB. PG.	BY
------	------	---------	----

REVISIONS

TAMiami TRAIL U.S. 41



PARCEL Q - INCREMENT 5 P.A. 34/26

**SARASOTA COUNTY**  
TRANSPORTATION DEPARTMENT  
ENGINEERING DIVISION

<b>BENCH MARK DATA SHEET</b>		ELEV.
		18.66
DATE DRAWN: 8-20-90 BY: KUP		BM. NO.
SET BY: S.W. F.N. INC.		133 F
ELEV. BASED ON BM. NO. Nos E-253 J-353		

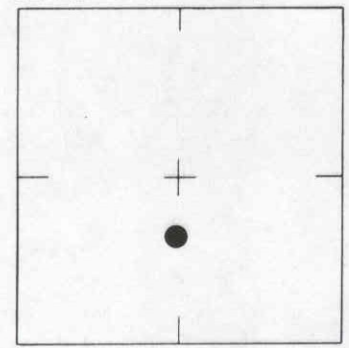
DATE	TYPE	FB. PG.	BY
REVISIONS			





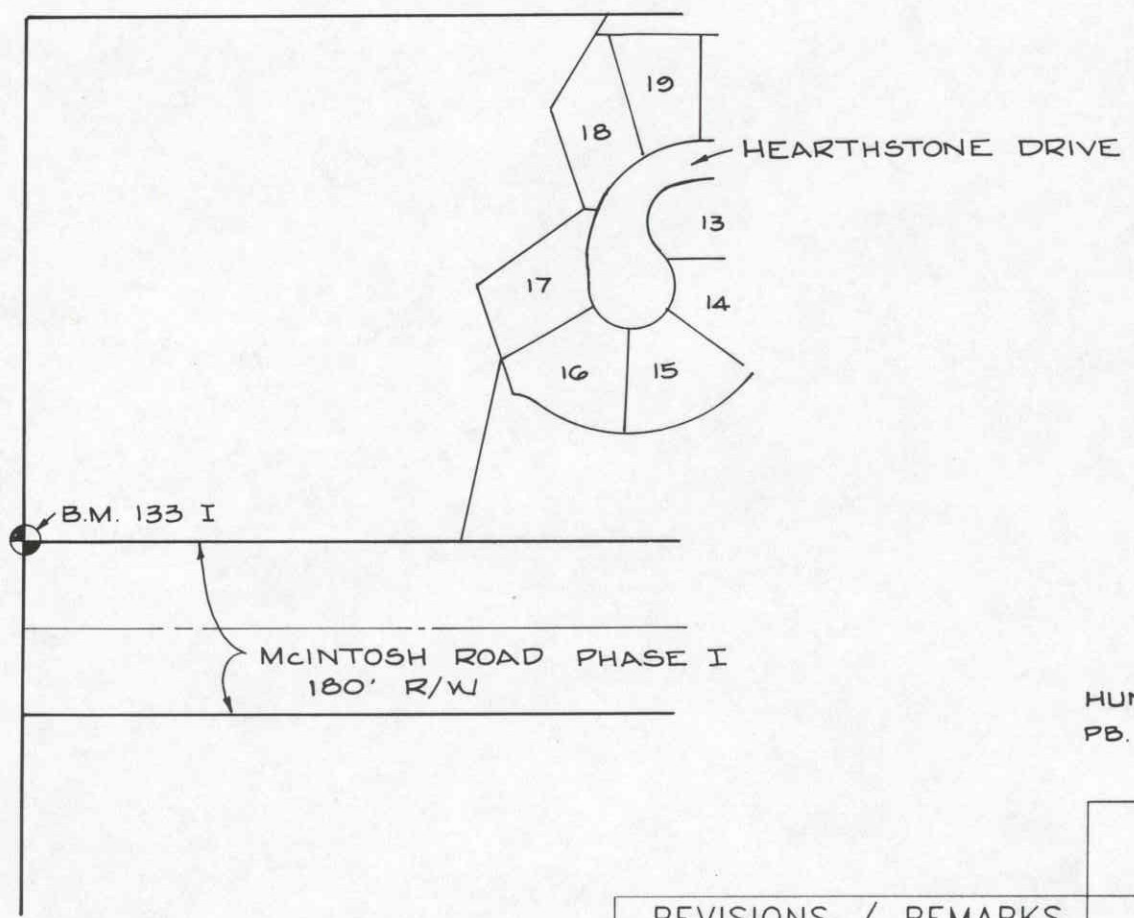
SCALE: N.T.S.

SEC. 34 , T. 37 S, R. 18 E



LOCATION SKETCH  
N.T.S.

U.S. 41 TAMiami TRAIL

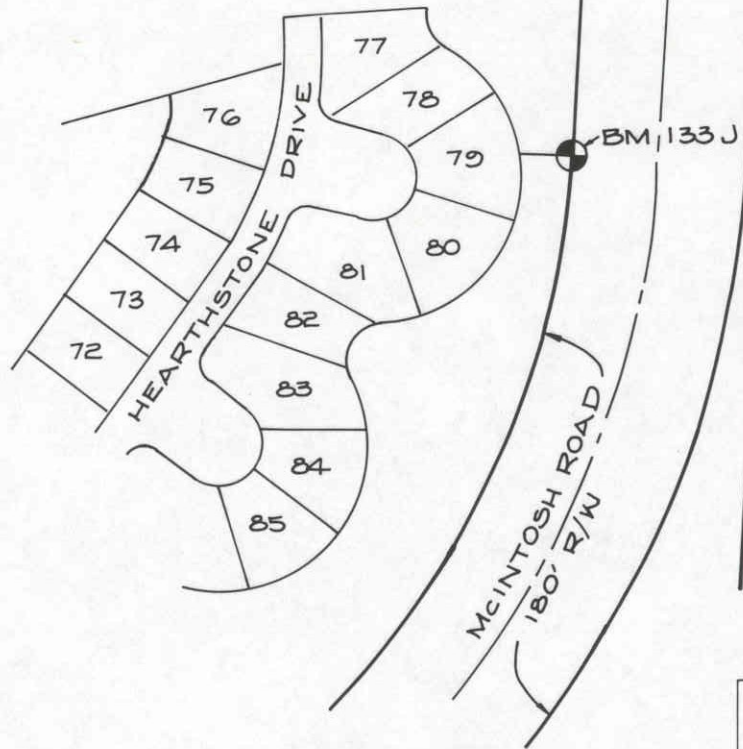


HUNTINGTON POINTE, UNIT 1  
PB. 34/44

REVISIONS / REMARKS
SET BY: S.W.N. INC.

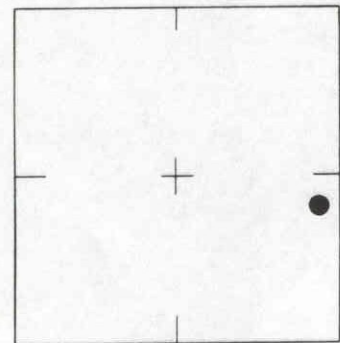
SARASOTA COUNTY TRANSPORTATION DEPARTMENT ENGINEERING DIVISION, SURVEY/MAPPING SECTION	
BENCH MARK DATA SHEET	ELEV. 11.50
	B.M. NO. 133 I
DATE DRAWN: JAN. 4 '01 BY: M.J.H.	ELEV. BASED ON B.M. NO. N.O.S. F-253 J-253
REF.: PB. 34 PG. 44 DATE: 12/17/20	

SOUTHERLY LINE OF N.E. 1/4 SEC. 34-37-18  
 NORTHERLY LINE OF S.E. 1/4 SEC. 34-37-18



SCALE: N.T.S.

SEC. 34 T. 37 S. R. 18 E



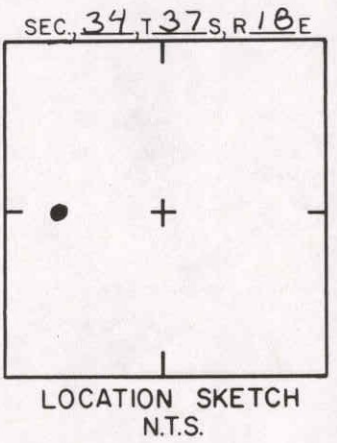
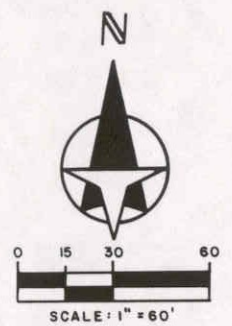
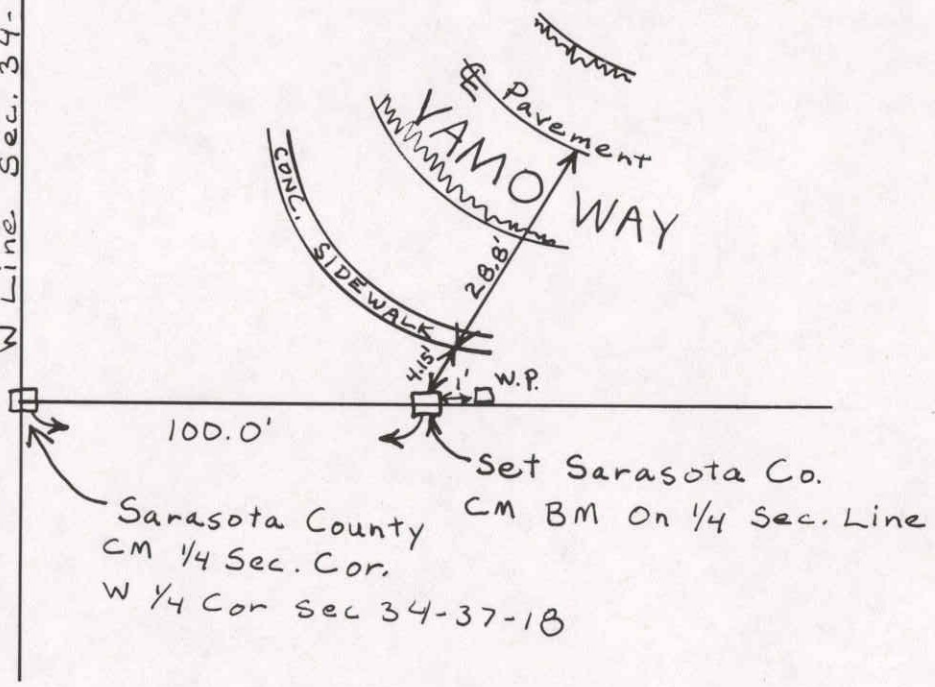
LOCATION SKETCH  
N.T.S.

HUNTINGTON POINTE, UNIT 1  
P.B. 34/44

SARASOTA COUNTY  
TRANSPORTATION DEPARTMENT  
ENGINEERING DIVISION, SURVEY/MAPPING SECTION

REVISIONS / REMARKS	BENCH MARK DATA SHEET	
		ELEV.
	DATE DRAWN: JAN. 4 '01	BY: M.J.H.
	REF.: PB 34 PG. 44	DATE: 12/17/00
SET BY: S.W.N. INC.	ELEV. BASED ON B.M. NO. N.O.S. F-253 J-253	B.M. NO. 133 J

W Line Sec. 34-37-18



Sarasota County  
CM 1/4 Sec. Cor.  
W 1/4 Cor sec 34-37-18

**SARASOTA COUNTY**  
TRANSPORTATION DEPARTMENT  
ENGINEERING DIVISION

**BENCH MARK  
DATA SHEET**

ELEV.  
14.84'  
BM. NO.

DATE DRAWN: 1-9-89 BY: RJJ

DATE	TYPE	FB. PG.	BY	REF: FB.	PG.	DATE
REVISIONS						

R-133

ELEV. BASED ON B.M. NO.