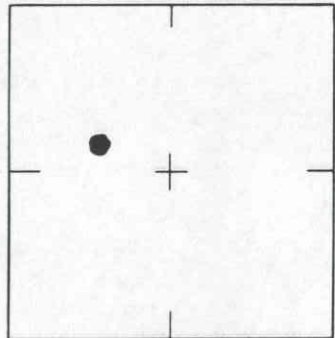


SCALE: N.T.S.

SEC. 2 T. 38 S. R. 11 E



LOCATION SKETCH  
N.T.S.

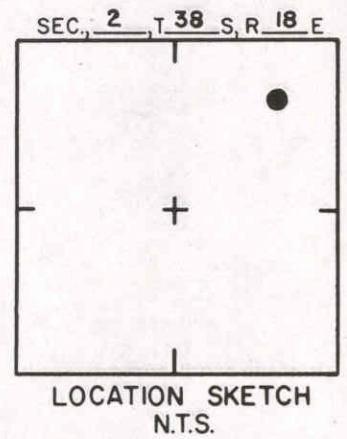
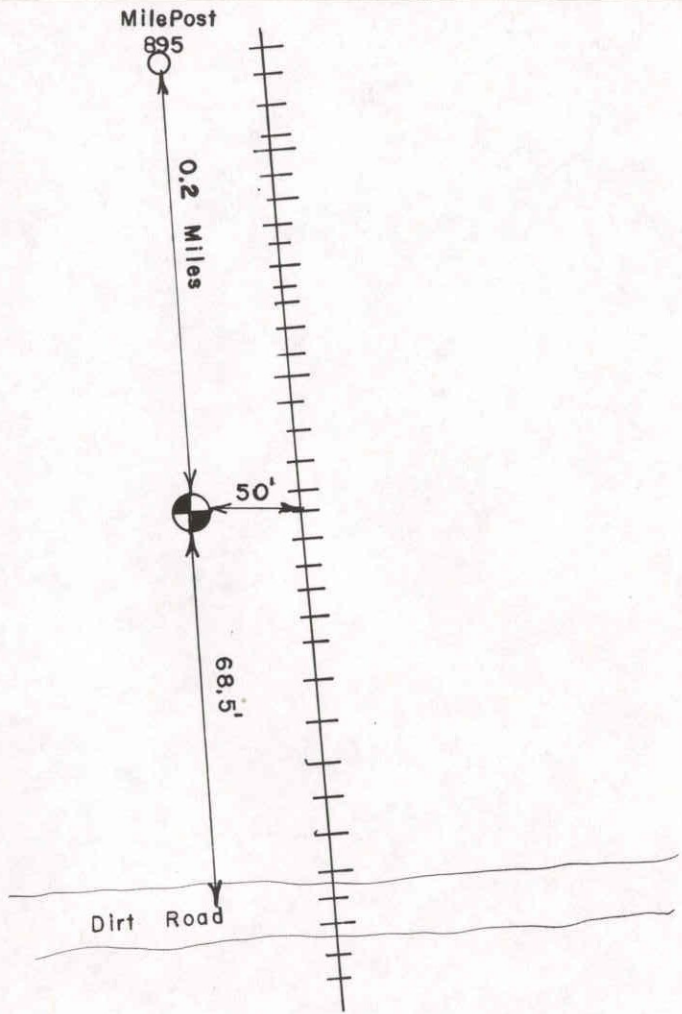
SET P.B.M. STAMPED  
B.M. ELEV. = 12.83  
on Top Pin of P.R.M.

BM 140

NOT SUBDIVIDED

REVISIONS / REMARKS
P.B. 30 PG. 4-F
1/2 SEC. 140
SET BY: POST, BUCKLEY, -

SARASOTA COUNTY TRANSPORTATION DEPARTMENT ENGINEERING DIVISION, SURVEY/MAPPING SECTION	
BENCH MARK DATA SHEET	ELEV.
	12.83
DATE DRAWN: 5-28-03 BY: J.L.	B.M. NO.
REF.: PG. DATE:	140
ELEV. BASED ON B.M. NO. NGS C-255	



DESCRIPTION OF BENCH MARK

Designation C 255	State Florida	County Sarasota
Nearst town Venice	County Sarasota	Chief of party R. Gerrish
Distance and direction from nearest town 7.4 miles north	Leveling date 1/66	Stamping C 255 1965
Character of mark A C&GS Bench Mark Disk	EL 16.444	
Established by C&GS		

Detailed description  
7.4 miles north along the Seaboard Air Line Railroad from the station, about 0.2 mile south of milepost 895, near the crossing of a dirt road, 68.5 feet northwest of the center of the crossing, 50.0 feet west of the west rail of the main track, 46 feet north of the center line of the road, 19.5 feet north of a fence corner, 3.0 feet south of a metal witness post, about level with the track and is a disk on copper coated steel rod flush with the ground and protected by a 4-inch tile projecting 0.2 foot. The rod was driven to refusal at a depth of 15.5 feet.

SARASOTA COUNTY  
TRANSPORTATION DEPARTMENT  
ENGINEERING DIVISION

BENCH MARK  
DATA SHEET

ELEV.  
16,444

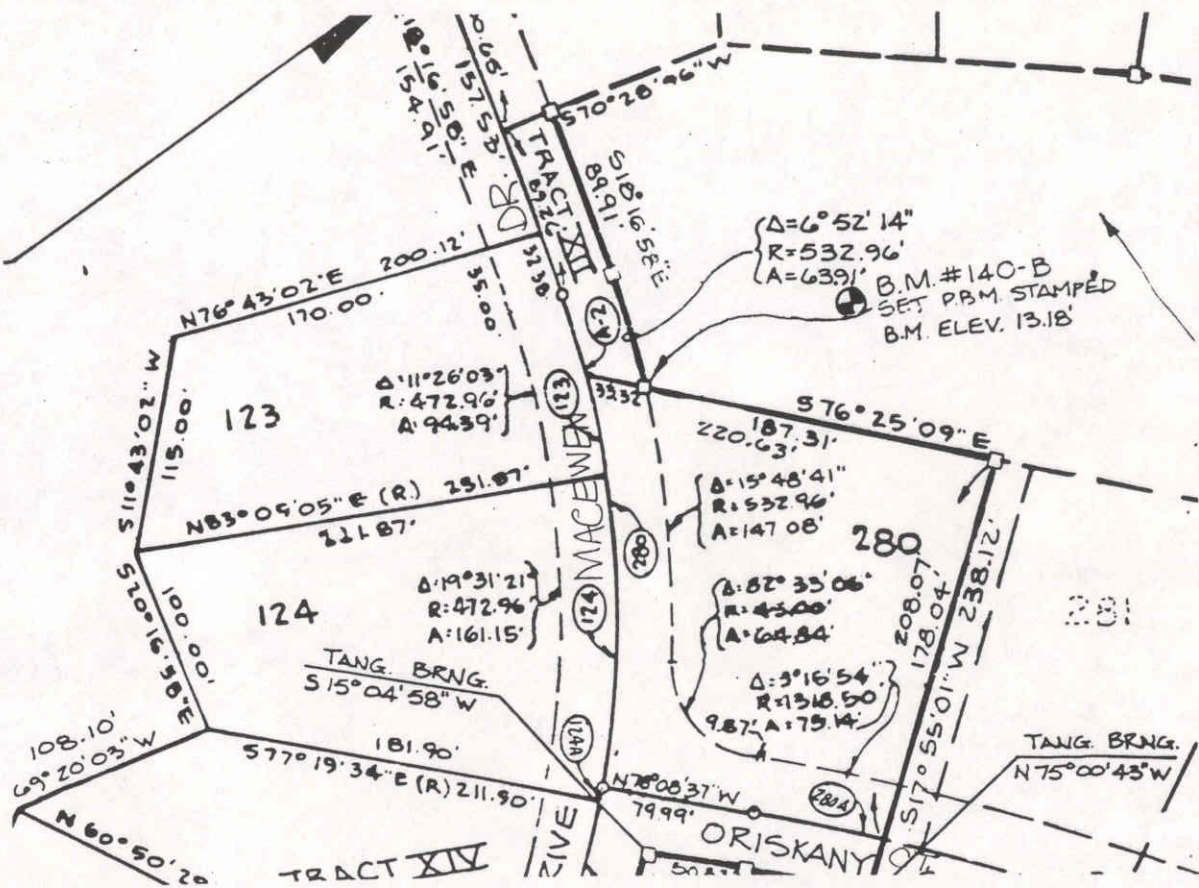
DATE DRAWN: 3-12-87 BY: RJJ

BM. NO.

DATE	TYPE	F.B. PG.	BY	REF: NOS C 255	DATE	140A
REVISIONS				ELEV. BASED ON B.M. NO.		

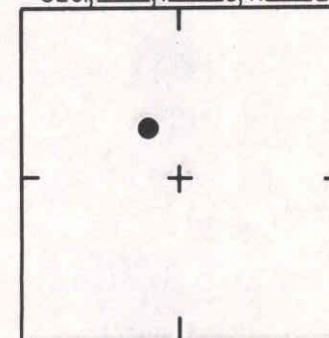


NOT TO SCALE



OAKS II, PHASE II  
P.B. 32/20

SEC. 2, T. 38 S, R. 18 E



LOCATION SKETCH  
N.T.S.

**SARASOTA COUNTY**  
TRANSPORTATION DEPARTMENT  
ENGINEERING DIVISION

**BENCH MARK  
DATA SHEET**

ELEV.

13.18'

BM. NO.

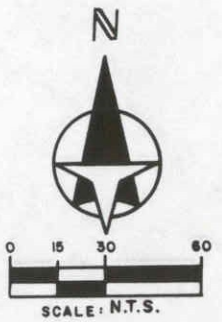
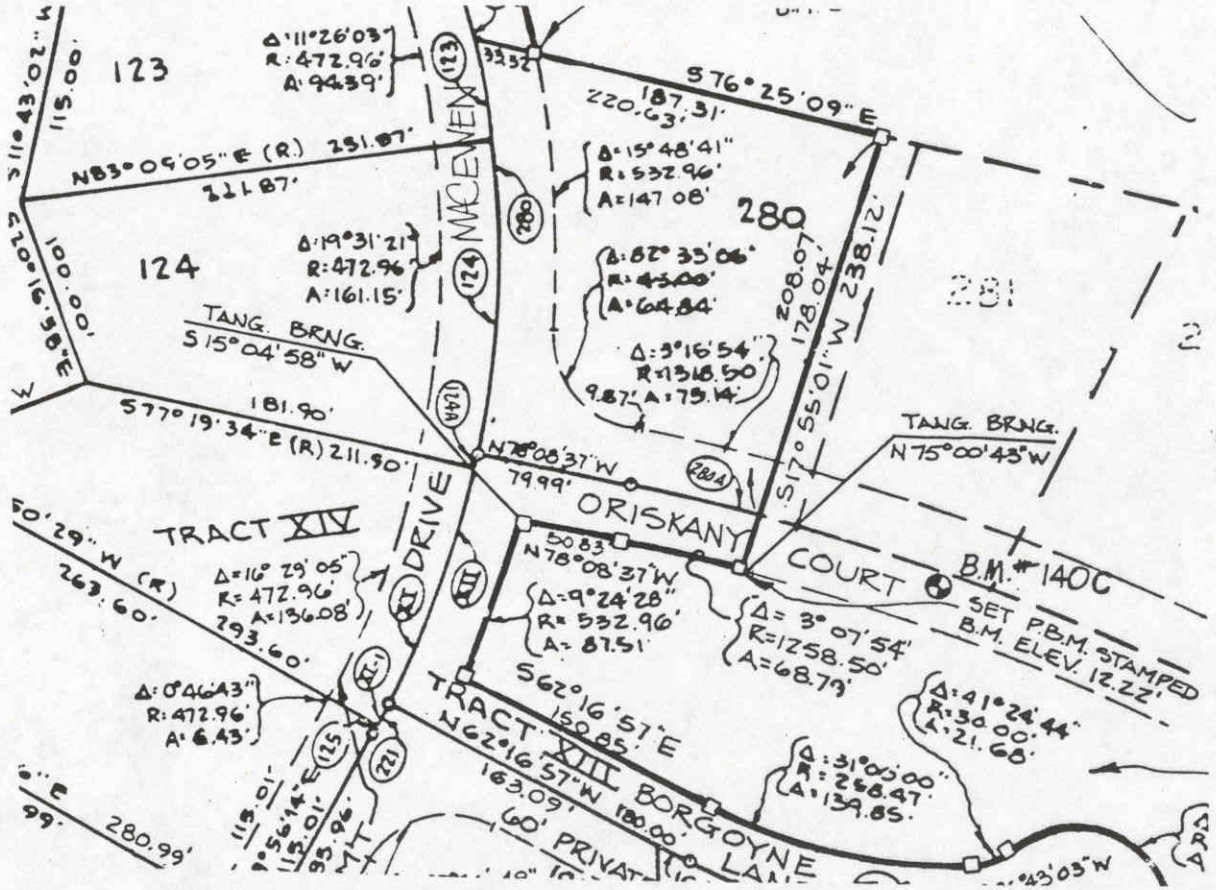
140 B

DATE DRAWN: MARCH 1988 BY: T.S.O.

REF: F.B. PG. DATE

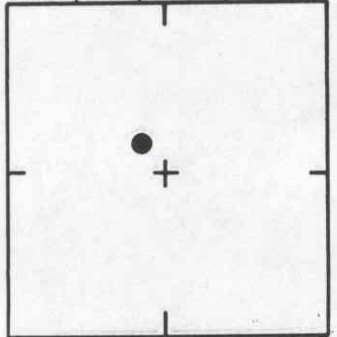
ELEV. BASED ON B.M. NO. N.G.S. C-255

DATE	TYPE	F.B. PG.	BY
REVISIONS			



OAKS II, PHASE II  
P.B. 32/20

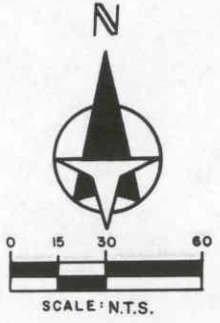
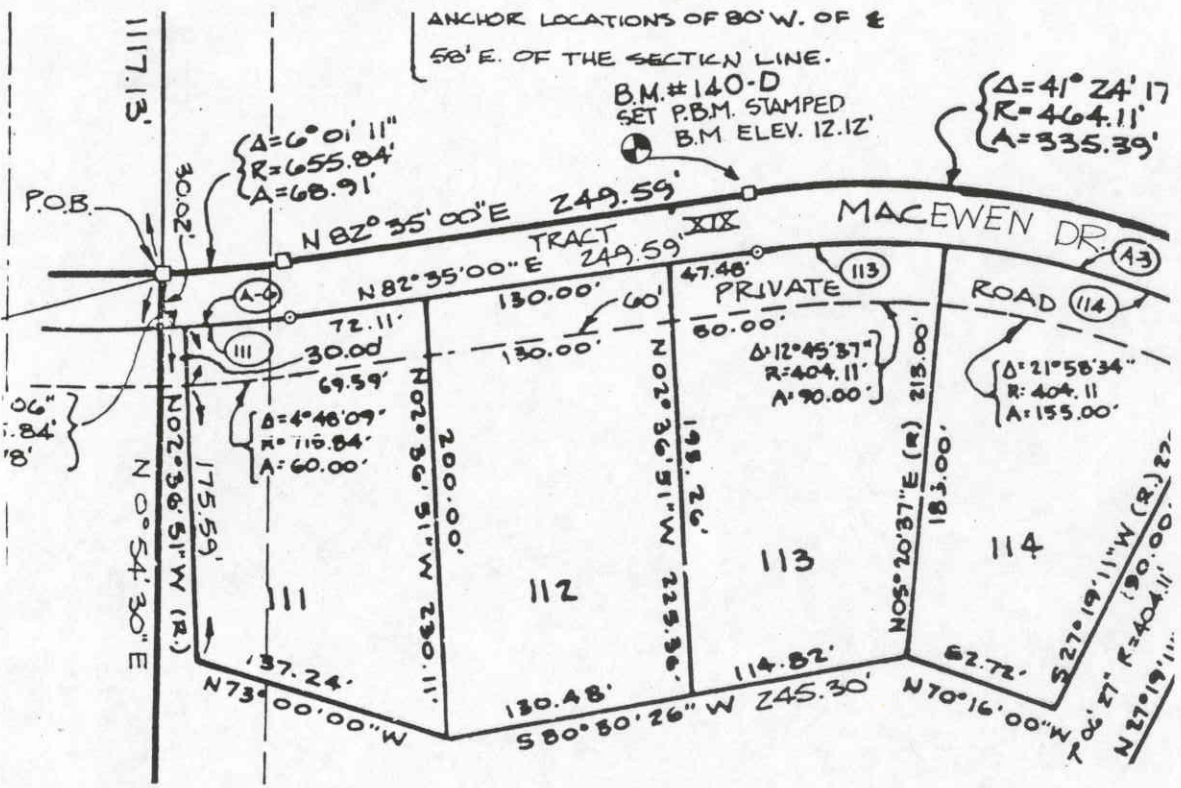
SEC. 2, T. 38 S, R. 18 E



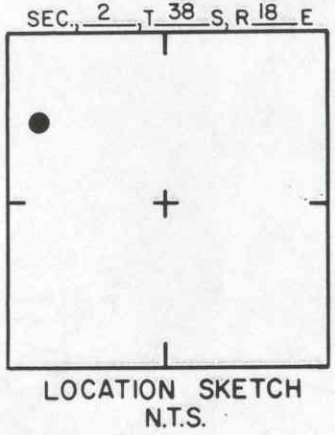
LOCATION SKETCH  
N.T.S.

<b>SARASOTA COUNTY</b>			
TRANSPORTATION DEPARTMENT			
ENGINEERING DIVISION			
<b>BENCH MARK DATA SHEET</b>			ELEV.
DATE DRAWN: MARCH 1988 BY: T.S.O.			12.22'
REF: F.B. PG. DATE			BM. NO.
ELEV. BASED ON B.M. NO. N.G.S. C-255			140 C

DATE	TYPE	F.B. PG.	BY
REVISIONS			



OAKS II, PHASE II  
P.B. 32/20



**SARASOTA COUNTY**  
TRANSPORTATION DEPARTMENT  
ENGINEERING DIVISION

**BENCH MARK  
DATA SHEET**

ELEV.

12.12'

BM. NO.

140 D

DATE DRAWN: MARCH 1988 BY: T.S.O.

REF: F.B. PG. DATE

ELEV. BASED ON B.M. NO. N.G.S. C-255

DATE	TYPE	F.B. PG.	BY
REVISIONS			

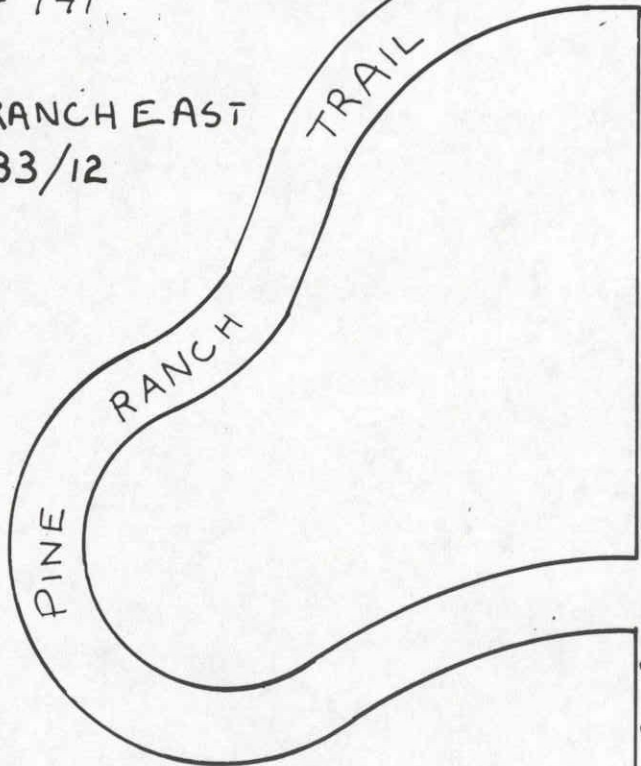
1/2 Sec Sht 140

BMI40E

BENCH MARK TOP OF C.M.

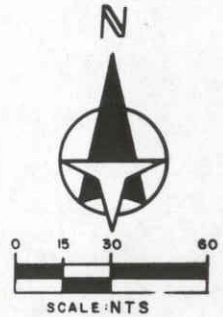
1/2 Sec Sht 141

PINE RANCH EAST  
PB 33/12

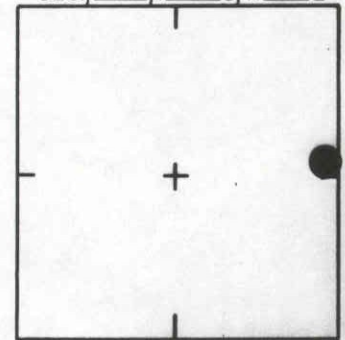


PINE RANCH EAST ROAD

Sec 2 Twp 38 Rng 18  
Sec 1 Twp 38 Rng 18



SEC. 2, T. 38, S. R. 18 E



LOCATION SKETCH  
N.T.S.

**SARASOTA COUNTY**  
TRANSPORTATION DEPARTMENT  
ENGINEERING DIVISION

**BENCH MARK  
DATA SHEET**

ELEV.

14.41'

BM. NO.

140E

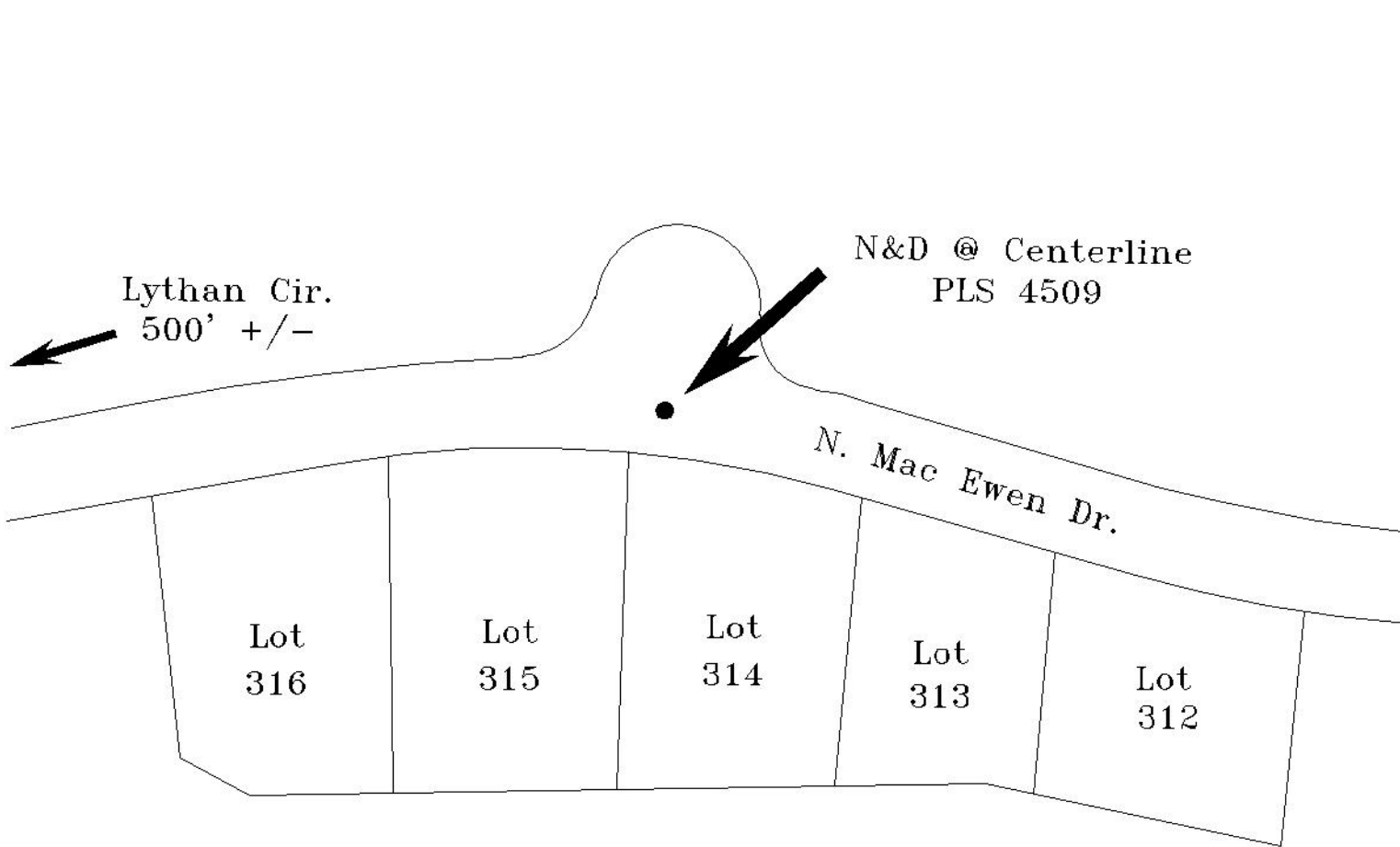
DATE DRAWN: 5-3-89

BY: RJJ

DATE	TYPE	FB. PG.	BY
REVISIONS			

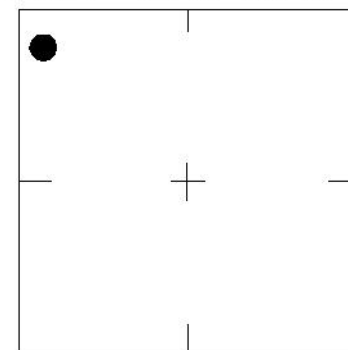
REF. FB.	PG.	DATE
ELEV. BASED ON B.M. NO. USC&GS C-255		

ELEV. BASED ON B.M. NO. USC&GS C-255



SCALE: N.T.S.

SEC., 2 , T 38 S, R 18 E



LOCATION SKETCH  
N.T.S.

WGS 84	Lat: 27° 12' 34.9"
	Lon: 82° 28' 51.4"
FL W. 83	N.1045698
	E. 499850

REVISIONS / REMARKS
8/28/03 Sketch drawn without fieldwork
SET BY: Mosby Engineering Associates Inc.

<b>SARASOTA COUNTY</b> Geomatics Service Center SURVEY/MAPPING SECTION	
<b>BENCH MARK DATA SHEET</b>	
DATE DRAWN: 8/28/03	BY: ND
REF.: PB. 38 PG. 48	DATE: 5/9/97
ELEV. BASED ON B.M. NO. 141-A	ELEV. 15.19' NGVD 29' B.M. NO. 140-L