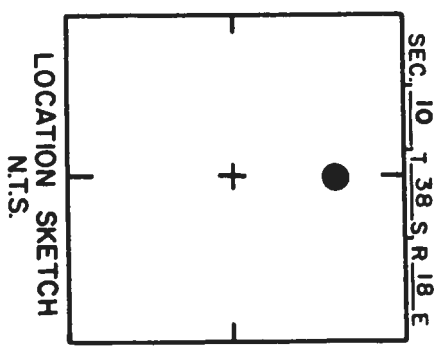
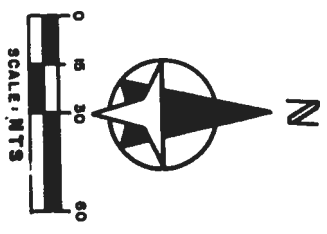
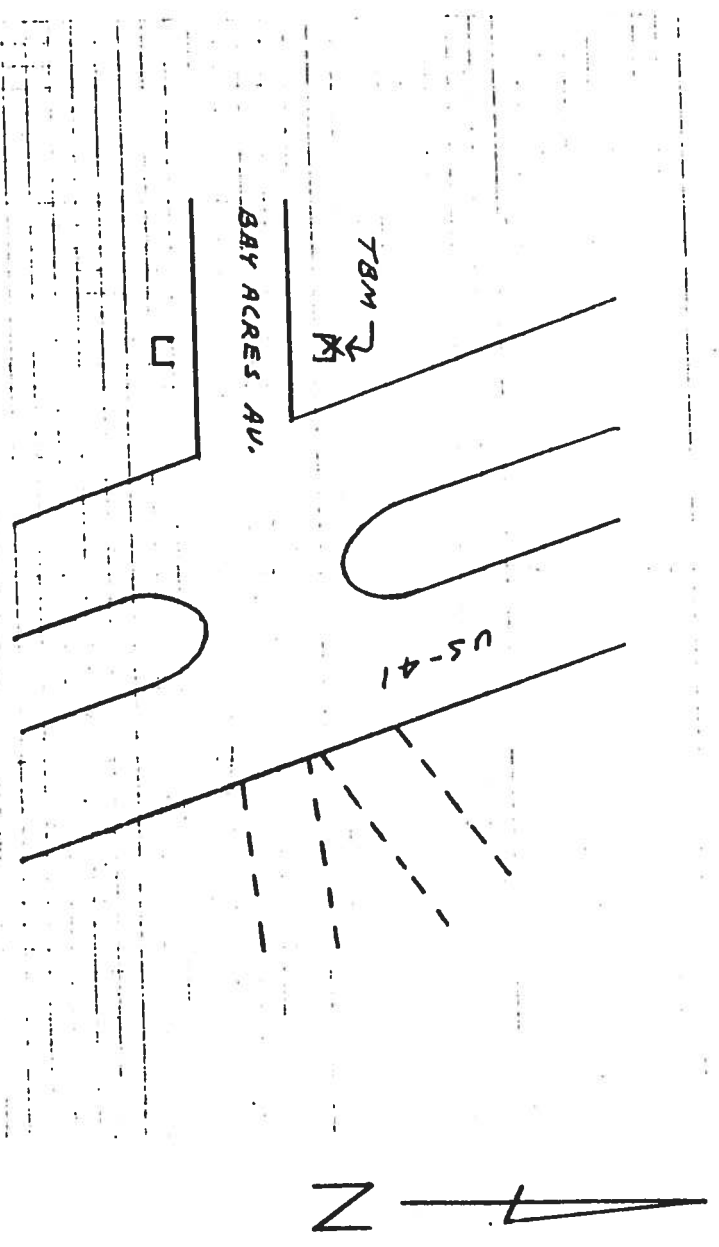
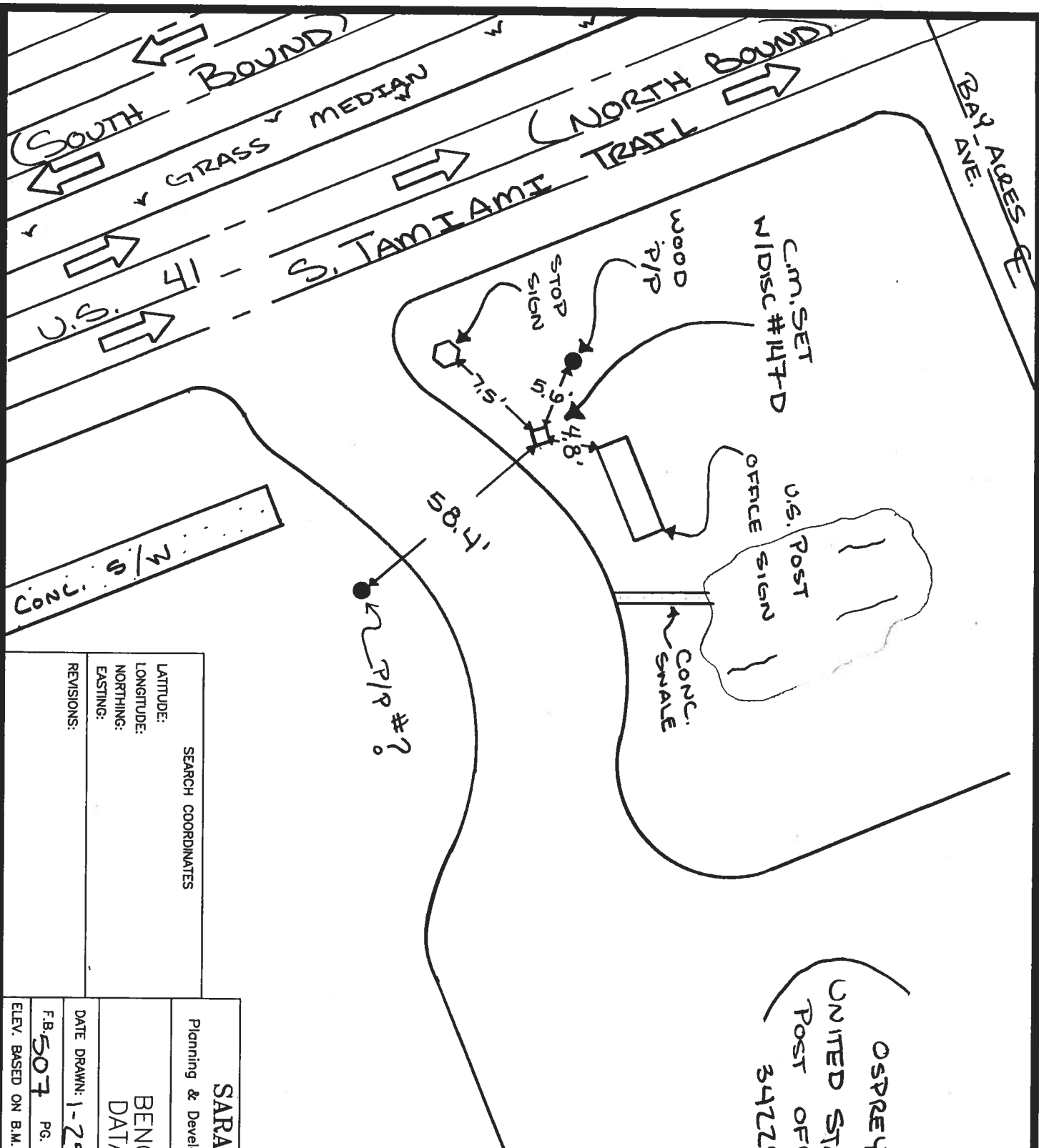


TO REACH THE MARK FROM WATER. US-41 & BAY ACRES AVE.
 TBM IS A CUT SQ. ON N. END OF A CONCRETE
 CULVERT PIPE



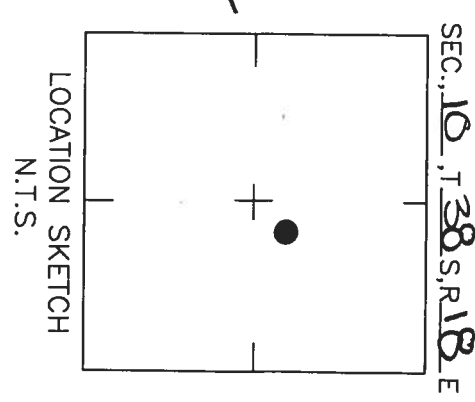
REVISIONS				DATE		TYPE		F.B. PG.		BY	
				DATE		TYPE		F.B. PG.		BY	
SARASOTA COUNTY TRANSPORTATION DEPARTMENT ENGINEERING DIVISION				BENCH MARK DATA SHEET				ELEV.			
DATE DRAWN: 2-2-87				BY: RJJ				13.99'			
REF: SWFWMD HFH 169				DATE: 10/81				BM. NO.			
ELEV. BASED ON BM. NO. NOS								147C			



OSTREY
 UNITED STATES
 POST OFFICE
 34729

N

SCALE: N.T.S.



SEARCH COORDINATES

LATITUDE:	
LONGITUDE:	
NORTHING:	
EASTING:	
REVISIONS:	

SARASOTA COUNTY	
Planning & Development Services, Survey-Mapping	
BENCH MARK DATA SHEET	
DATE DRAWN: 1-25-08 BY: R. Z...	ELEV. 14.194
F.B. 507 PG. 24 DATE: 1-8-08	NGVD29 B.M. NO. 147-D
ELEV. BASED ON B.M. NO. 1510-C	