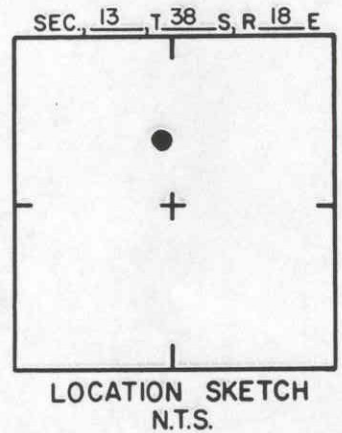
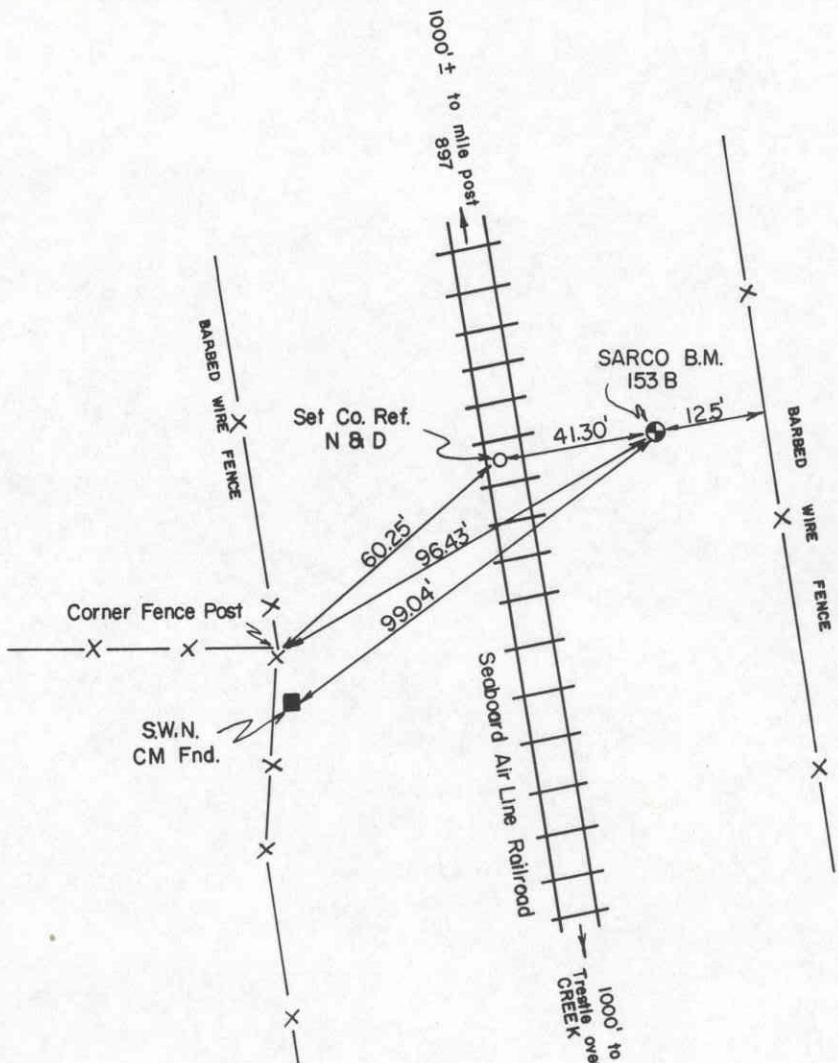


SARASOTA COUNTY			
TRANSPORTATION DEPARTMENT			
ENGINEERING DIVISION			
BENCH MARK DATA SHEET			ELEV.
DATE DRAWN: 4-30-86 BY: WFW			12.37'
REF: F.B. 264 PG. 34 DATE 1-7-86			BM. NO.
ELEV. BASED ON B.M. NO. 153 B			153 A

DATE	TYPE	F.B. PG.	BY
REVISIONS			



OSCAR SCHERER
STATE PARK

Elv. 13.212'

RECOVERY NOTE, BENCH MARK

Recovered 1977 NOA
"Same Cond." R

Designation Z 38 State Florida County Sarasota
 Nearest town Venice Described in Chief of party R. Gerrish
 Distance and direction from nearest town 5.4 miles north Recovery date 1/66
 Character of mark A C&GS B. M. Disk Established by C&GS Stamping Z 38 1933 13.212
 Also horizontal control point Present condition Good
 Detailed report: 5.4 miles north along the Seaboard Air Line Railroad from the station at Venice, about 0.2 mile north of the north end of the trestle over South Creek, in section 13, R 18 E, T 38 S, 0.2 mile south of milepost 897, 39.0 feet east of the east rail, 12.5 feet west of the right-of-way fence, 1.5 feet south of a metal witness post, about 4 feet below the level of the track and set in the top of a concrete post projecting 0.2 foot.

				SARASOTA COUNTY TRANSPORTATION DEPARTMENT ENGINEERING DIVISION	
				BENCH MARK DATA SHEET	
DATE DRAWN: 1-9-86		BY: WFW		BM. NO.	
DATE	TYPE	FB. PG.	BY	REF: FB. 259	PG. 36
REVISIONS				DATE 1-7-86	
				ELEV. BASED ON B.M. NO. USC & GS Z-38	
				153 B	