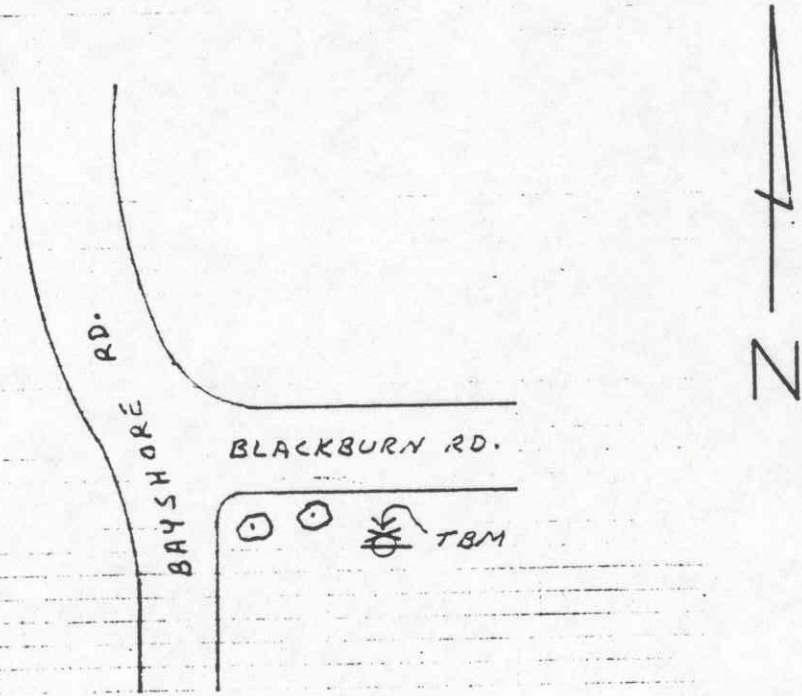
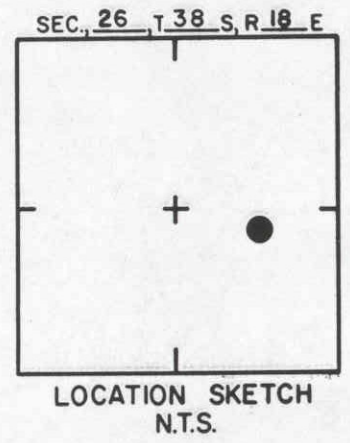
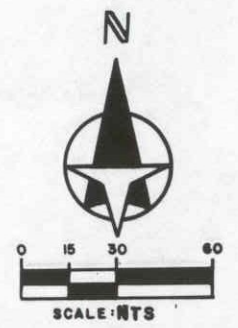


TO REACH THE MARK FROM INTER. BAYSHORE RD. & BLACKBURN RD.
TBM IS A RAILROAD SPIKE IN N. SIDE OF P-POLE



SARASOTA COUNTY
TRANSPORTATION DEPARTMENT
ENGINEERING DIVISION

JULY 1988 CHANGED FROM 167 RJJ

**BENCH MARK
DATA SHEET**

ELEV.
14.23'
BM. NO.

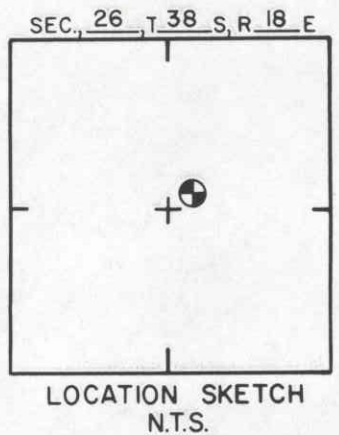
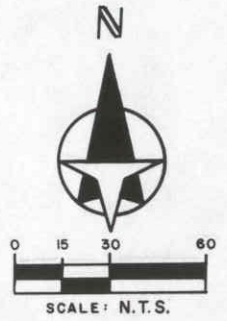
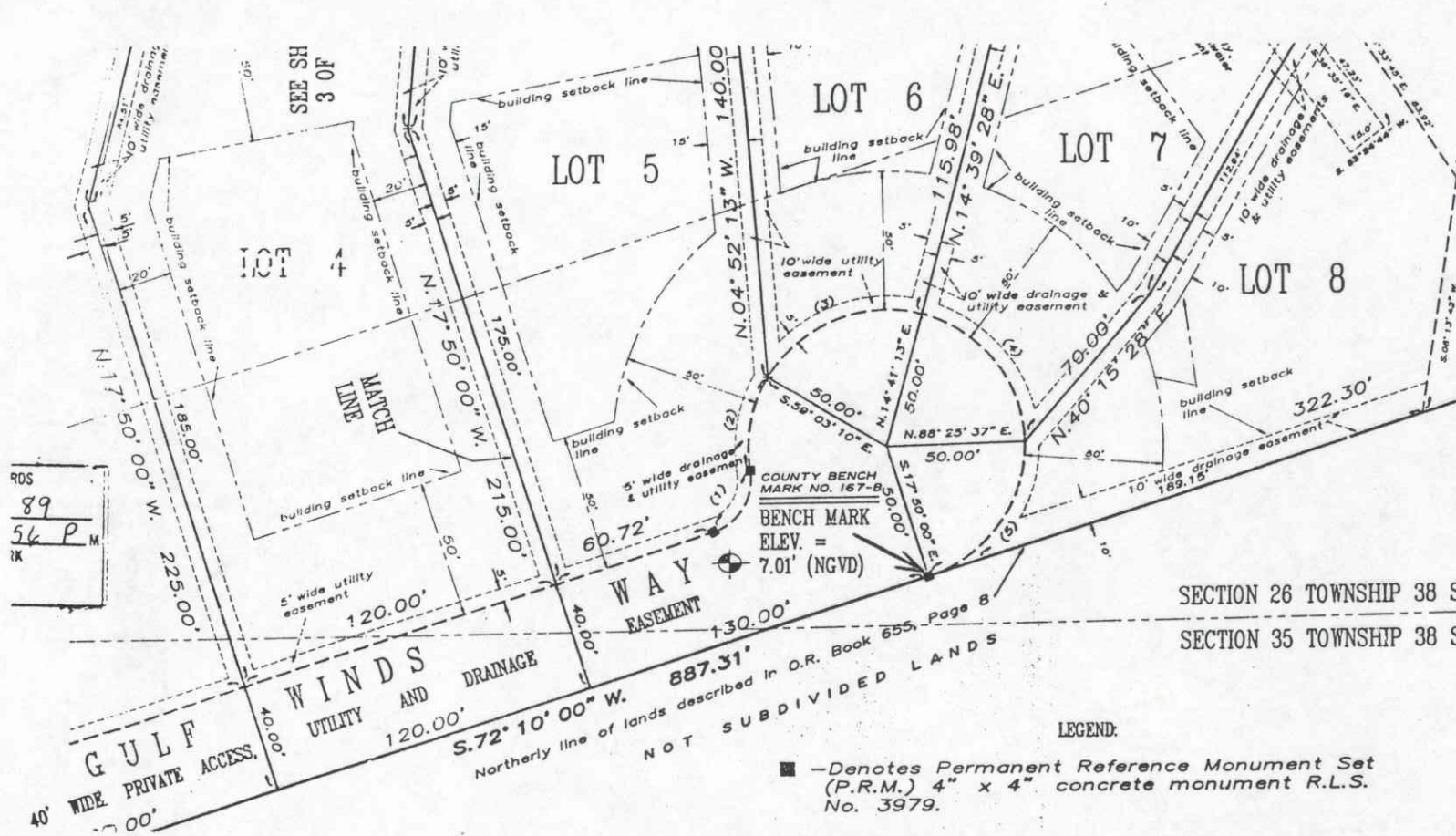
DATE TYPE FB. PG. BY

REF: SWFWMD HFH 195 DATE 11/81

167A

REVISIONS

ELEV. BASED ON B.M. NO. NOS



SECTION 26 TOWNSHIP 38 S
SECTION 35 TOWNSHIP 38 S

RDS
89
56 P M
IK

LEGEND:

■ -Denotes Permanent Reference Monument Set (P.R.M.) 4" x 4" concrete monument R.L.S. No. 3979.

PLAT BOOK 33 PAGE 17 CASEY KEY ESTATES

**SARASOTA COUNTY
TRANSPORTATION DEPARTMENT
ENGINEERING DIVISION**

				BENCH MARK DATA SHEET			ELEV.
							7.01'
				DATE DRAWN: 5/30/89 BY: SCB			BM. NO.
DATE	TYPE	FB. PG.	BY	REF. FB.	PG.	DATE	167 B
REVISIONS				ELEV. BASED ON B.M. NO. FDNR # R-105			