

**SARASOTA COUNTY**  
 TRANSPORTATION DEPARTMENT  
 ENGINEERING DIVISION

7-19-88 Installed Witness Post P.M. R.J.J.

**BENCH MARK  
 DATA SHEET**

ELEV.

7.62

B.M. IS A MONUMENT ELEV. IN TOP

DATE DRAWN: JUNE 1983 BY: DBP

BM. NO.

DATE	TYPE	FB. PG.	BY
REVISIONS			

REF: FB. BM PG. 172 B DATE ?

172 B

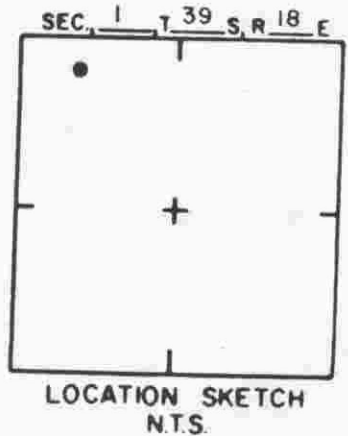
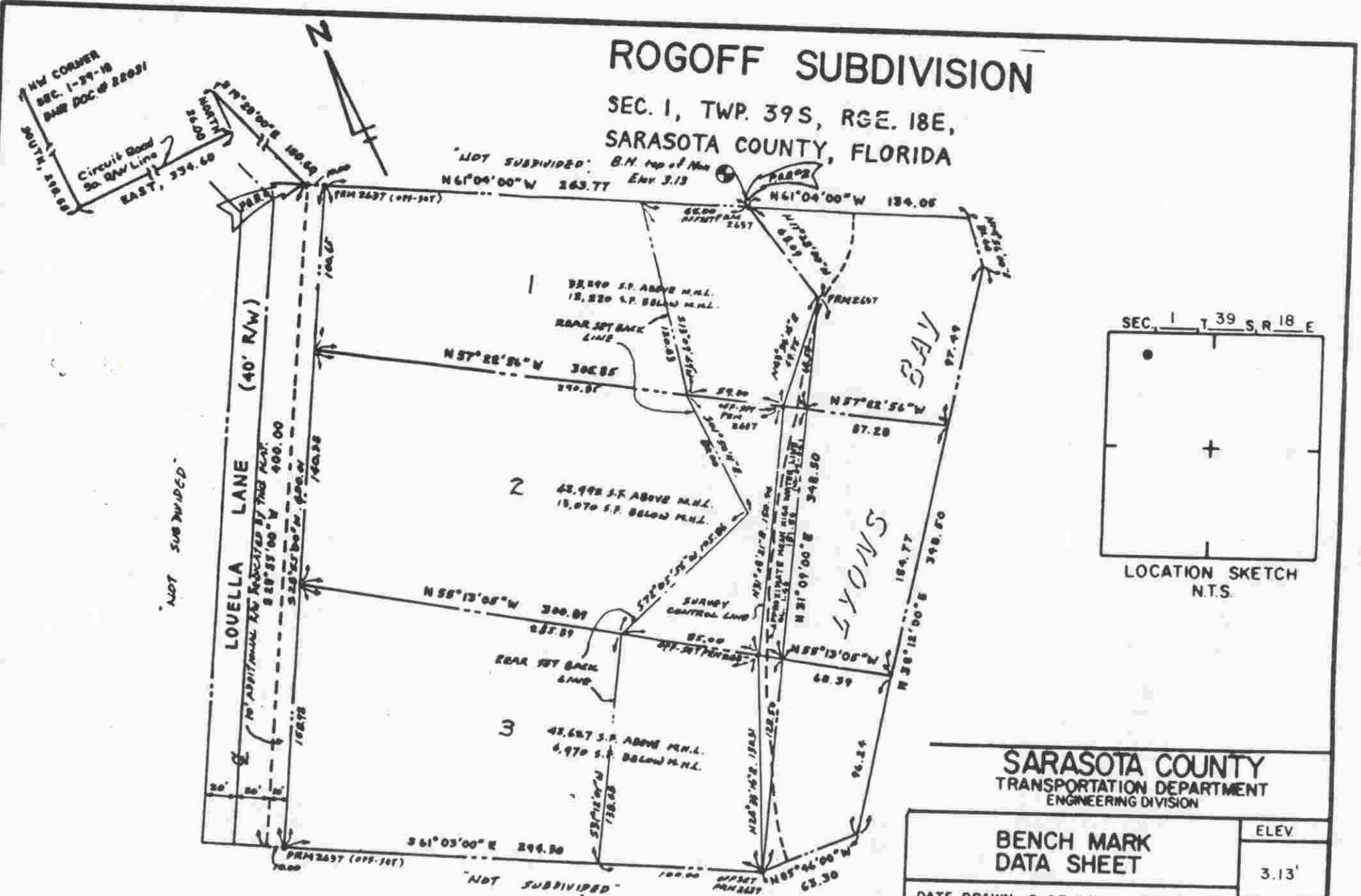
ELEV. BASED ON B.M. NO. ?

# ROGOFF SUBDIVISION

SEC. 1, TWP. 39 S, RGE. 18 E,  
SARASOTA COUNTY, FLORIDA

NW CORNER  
SEC. 1-39-18  
BMR DOC # 22021  
Circuit Road  
So. R/W Line  
NORTH, 34.00  
EAST, 334.69

"NOT SUBDIVIDED" B.M. top of Man  
N61°04'00"W 263.77 Elev. 3.13



SARASOTA COUNTY  
TRANSPORTATION DEPARTMENT  
ENGINEERING DIVISION

BENCH MARK  
DATA SHEET

DATE DRAWN: 9-03-86 BY: PJB  
REF: PB. 31 PG. 19 DATE 6-1-85

ELEV.  
3.13'  
BM. NO.  
172C

DATE	TYPE	FB PG.	BY
------	------	--------	----

REVISIONS

ELEV BASED ON BM. NO. N.G.V.D. 1929