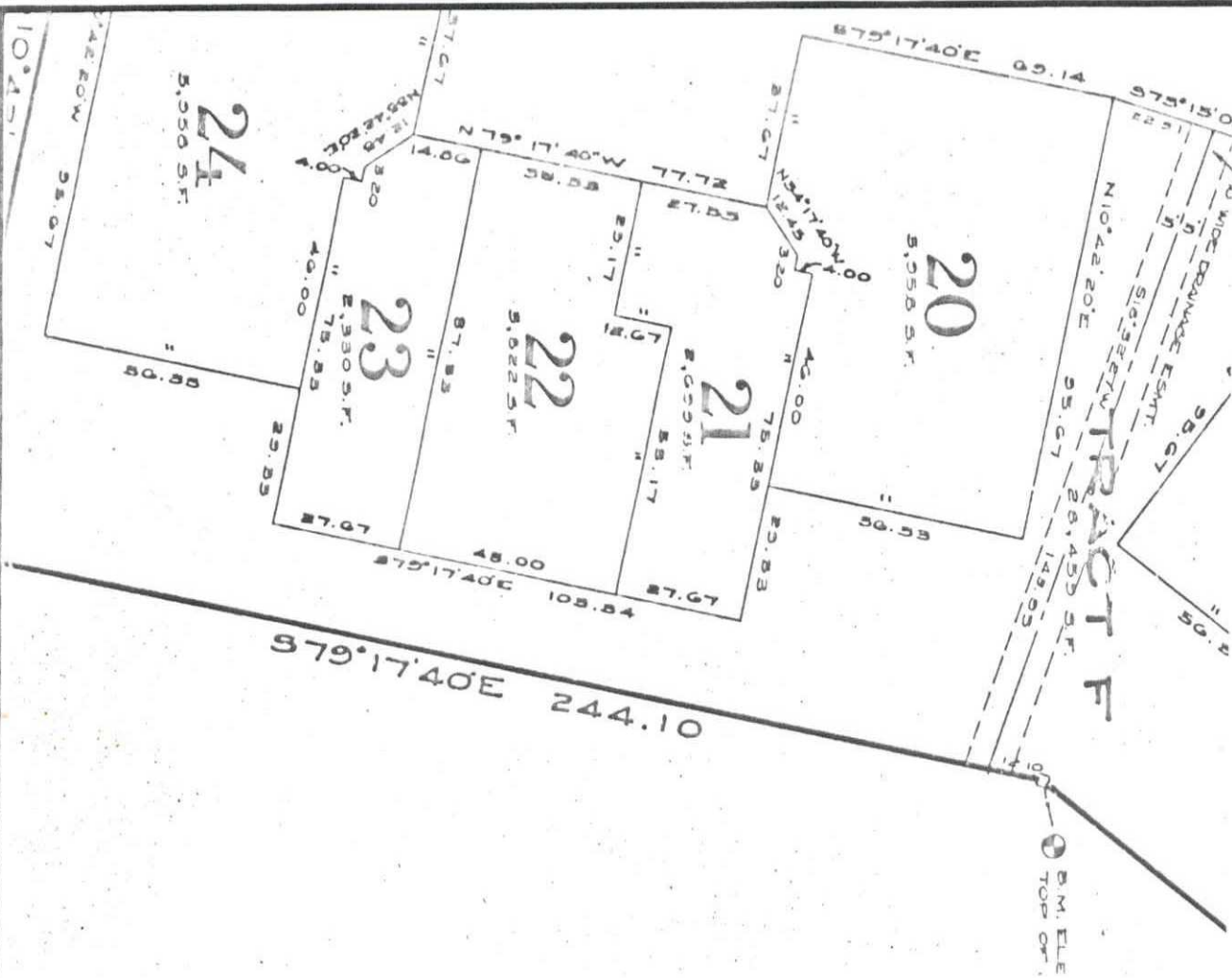


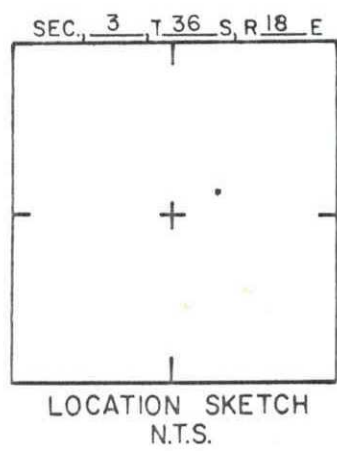
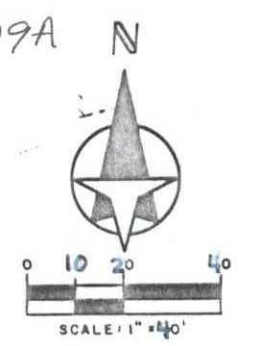
SARASOTA COUNTY
TRANSPORTATION DEPARTMENT
ENGINEERING DIVISION

MAY 16, 1985 Changed No. R31A to 19A			
DATE	TYPE	FB. PG.	BY
REVISIONS			

BENCH MARK DATA SHEET		ELEV.
		33.24
DATE DRAWN: JUNE 1983 BY: DBP		BM. NO.
REF: FB. 235 PG. 77 DATE 7-6-77		19A
ELEV. BASED ON BM. NO. TBM ?		

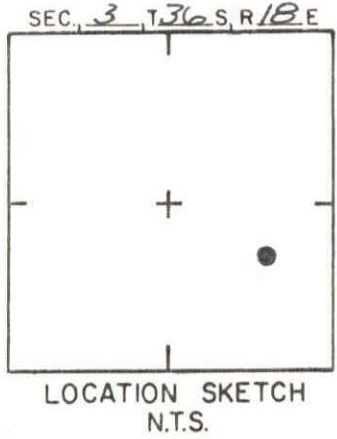
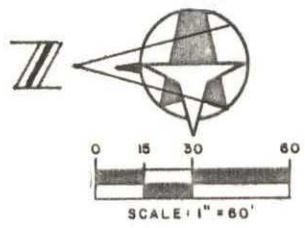
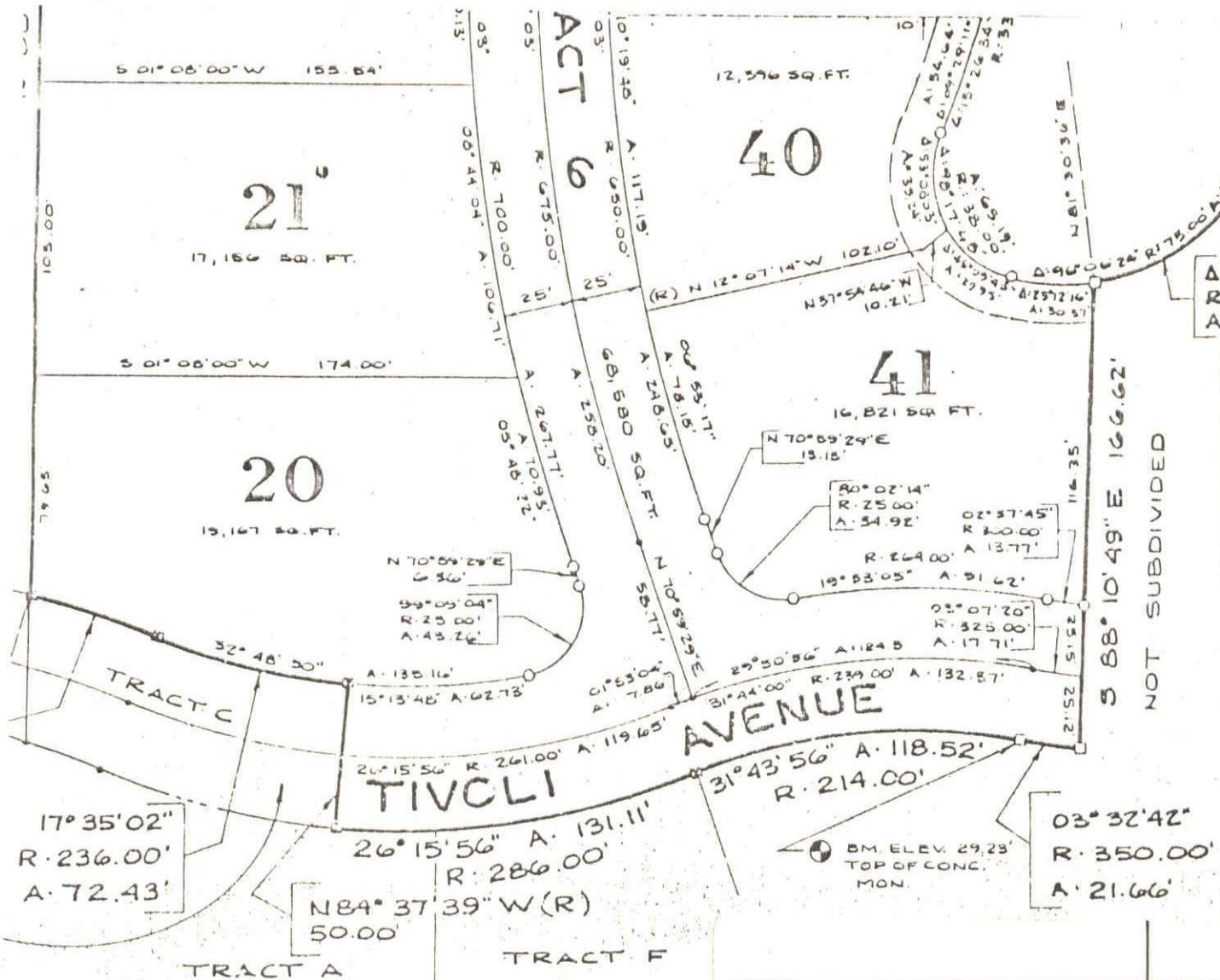


P.B. 30/29-29A



SARASOTA COUNTY TRANSPORTATION DEPARTMENT ENGINEERING DIVISION			
BENCH MARK DATA SHEET			ELEV.
			30.39
DATE DRAWN: AUG. 1985		BY: PJB	
			BM. NO.
REF: F.B.	PG.	DATE	
REVISIONS			19B
ELEV. BASED ON BM. NO. B93 (DESTROYED)			

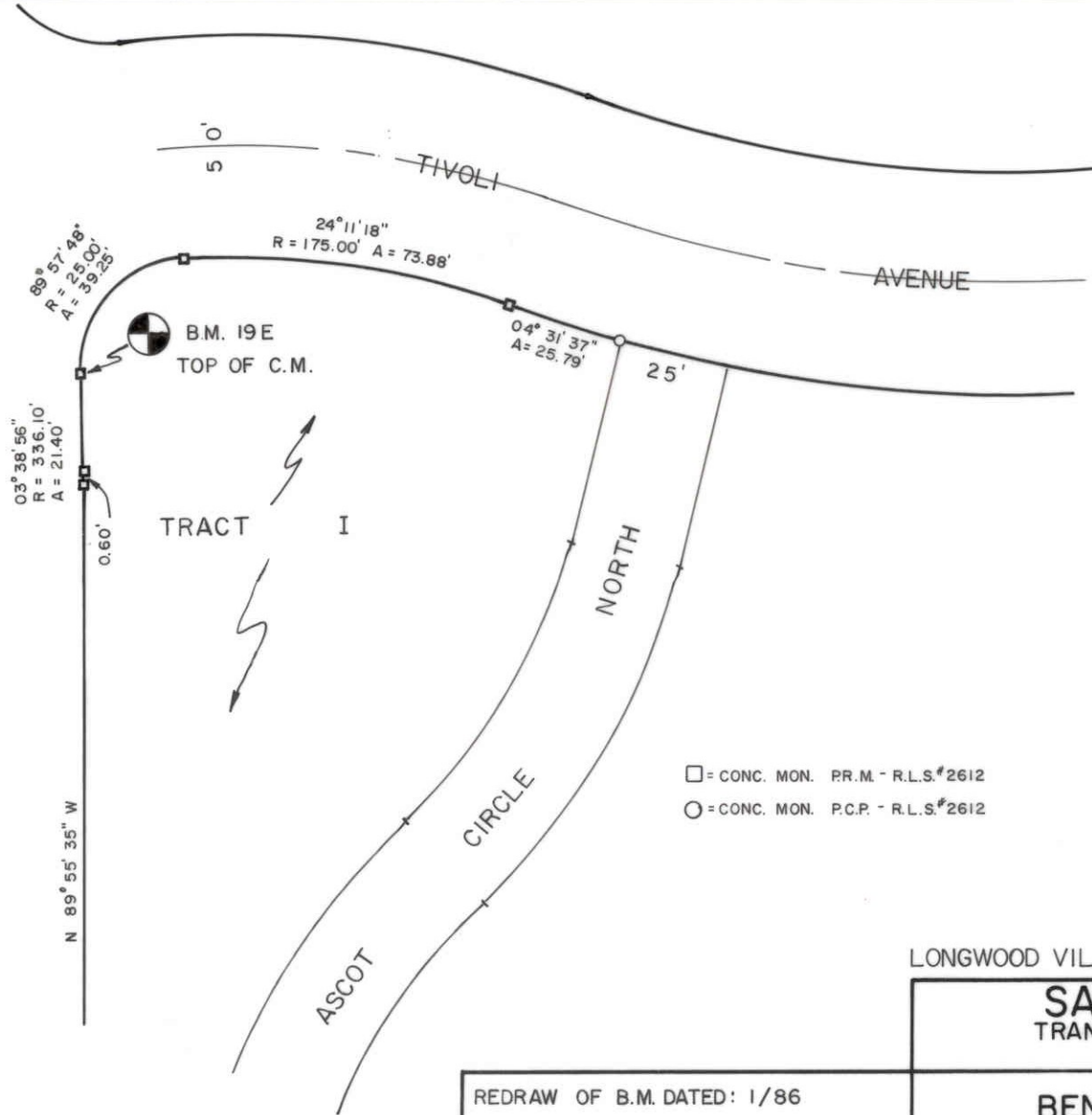
DATE	TYPE	F.B. PG.	BY
REVISIONS			



SARASOTA COUNTY
TRANSPORTATION DEPARTMENT
ENGINEERING DIVISION

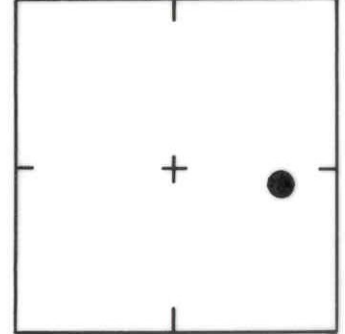
				BENCH MARK DATA SHEET		ELEV.
						29.23'
				DATE DRAWN: 12-30-85 BY: W.F.W.		BM. NO.
DATE	TYPE	FB. PG.	BY	REF: FB. 30	PG. 41	DATE
REVISIONS						19c
						ELEV. BASED ON BM. NO.

DESOTO ROAD



SCALE: N.T.S.

SEC. 3, T. 36 S, R. 18 E



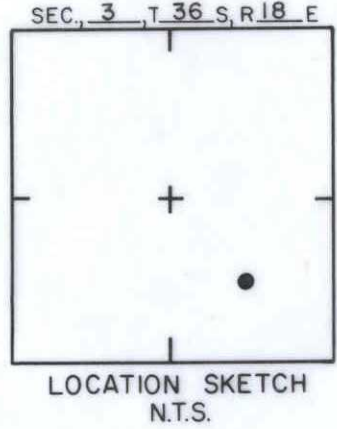
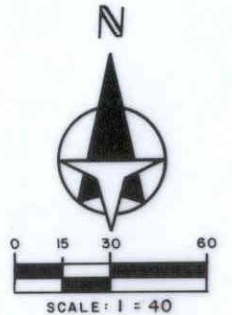
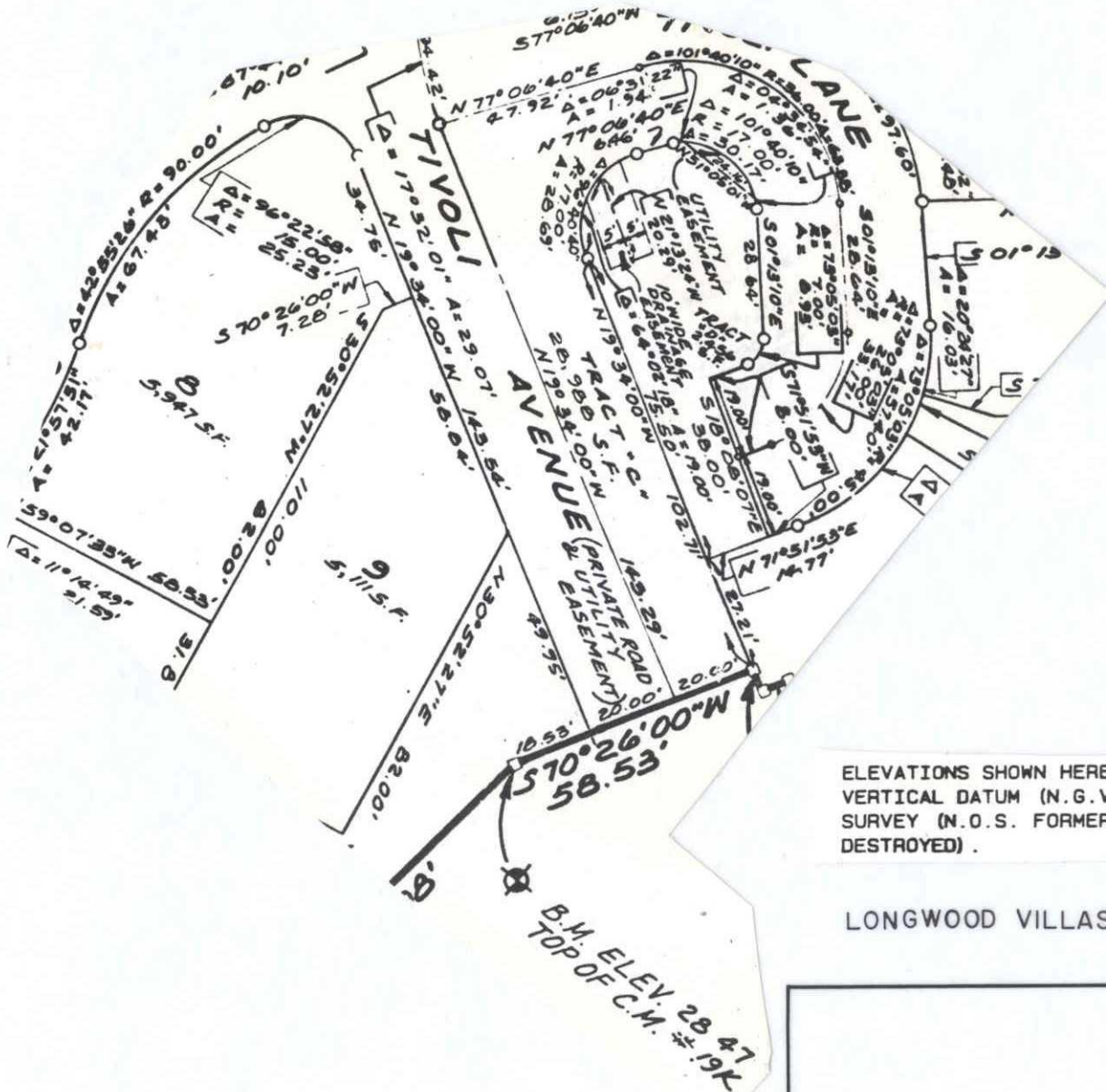
LOCATION SKETCH N.T.S.

- = CONC. MON. P.R.M. - R.L.S.#2612
- = CONC. MON. P.C.P. - R.L.S.#2612

LONGWOOD VILLAS, UNIT ONE P.B. 30/29

SARASOTA COUNTY
TRANSPORTATION DEPARTMENT
ENGINEERING DIVISION

REDRAW OF B.M. DATED: 1/86				BENCH MARK DATA SHEET		ELEV.
						31.63'
DATE				DATE DRAWN: JUNE 6, 1990 BY: KLP		BM. NO.
				SET BY: S.W. & N., INC.		19E
REVISIONS				ELEV. BASED ON B.M. NO. S. B 93		

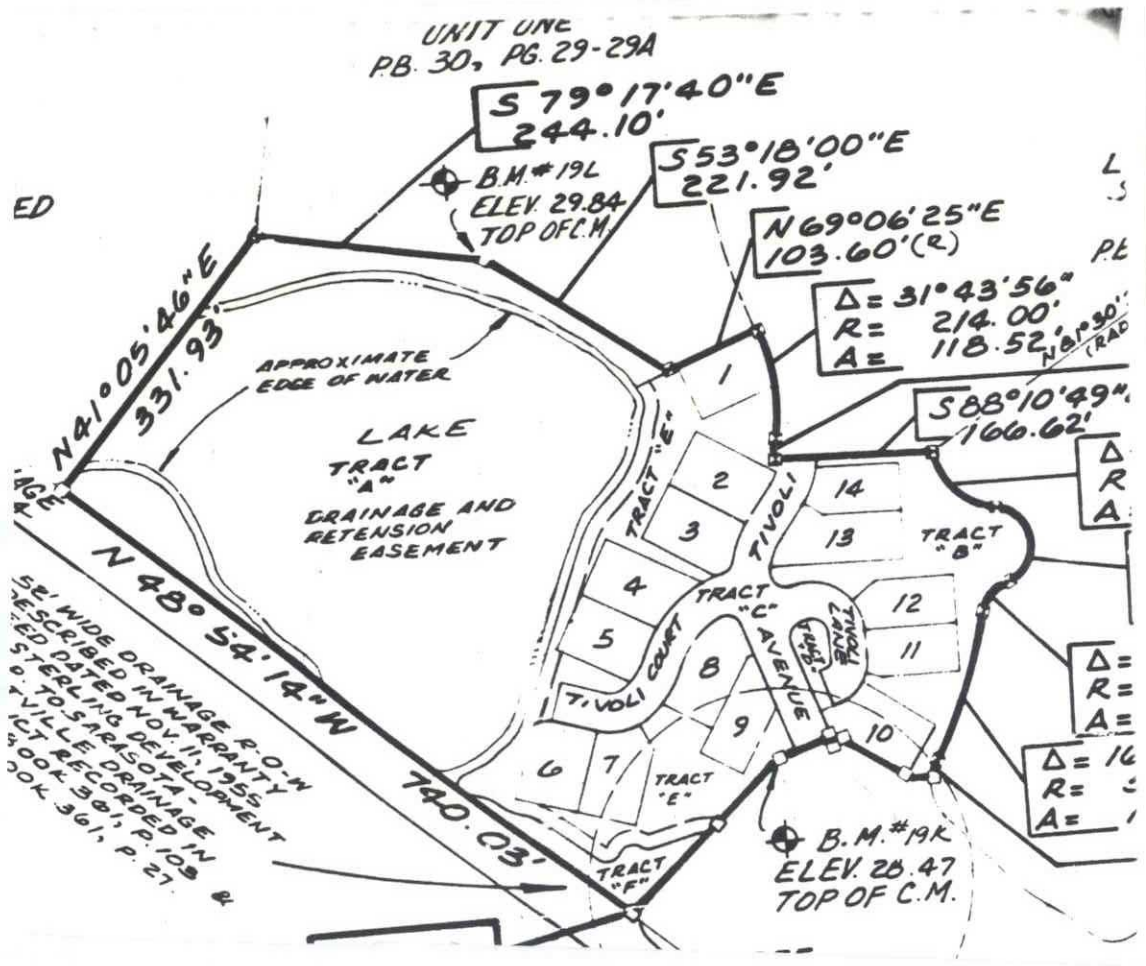


ELEVATIONS SHOWN HEREON ARE RELATIVE TO THE NATIONAL GEODETIC VERTICAL DATUM (N.G.V.D.) OF 1929 BASED ON NATIONAL OCEAN SURVEY (N.O.S. FORMERLY U.S.C. & G.S.) BENCH MARK B93 (NOW DESTROYED).

LONGWOOD VILLAS, UNIT 3

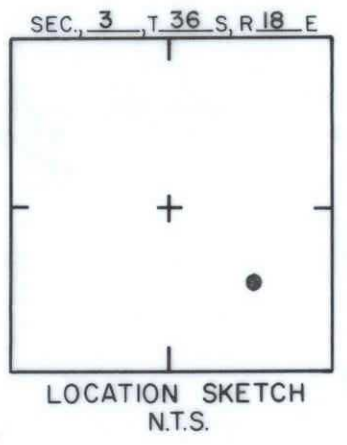
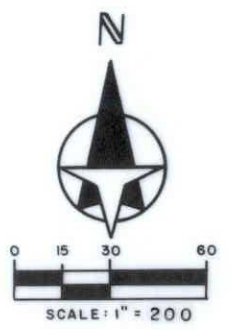
SARASOTA COUNTY
TRANSPORTATION DEPARTMENT
ENGINEERING DIVISION

				BENCH MARK DATA SHEET		ELEV.
						28.47
				DATE DRAWN: 5/23/88	BY: SCB	BM. NO.
DATE	TYPE	FB. PG.	BY	REF: PB. 32	PG. 26	DATE
REVISIONS				ELEV. BASED ON BM. NO.		19 K



52' WIDE DRAINAGE R.O.-W DESCRIBED IN WARRANTY DEED DATED NOV. 11, 1955 TO SARASOTA - STERLING DEVELOPMENT - TIVOLI E DRAINAGE IN VILLE RECORDED IN BOOK 361, P. 27.

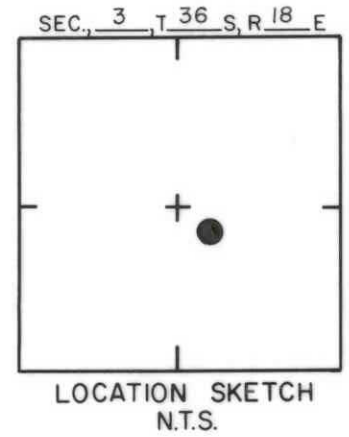
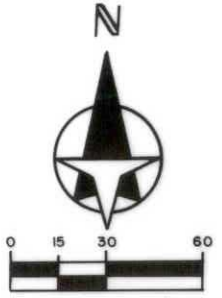
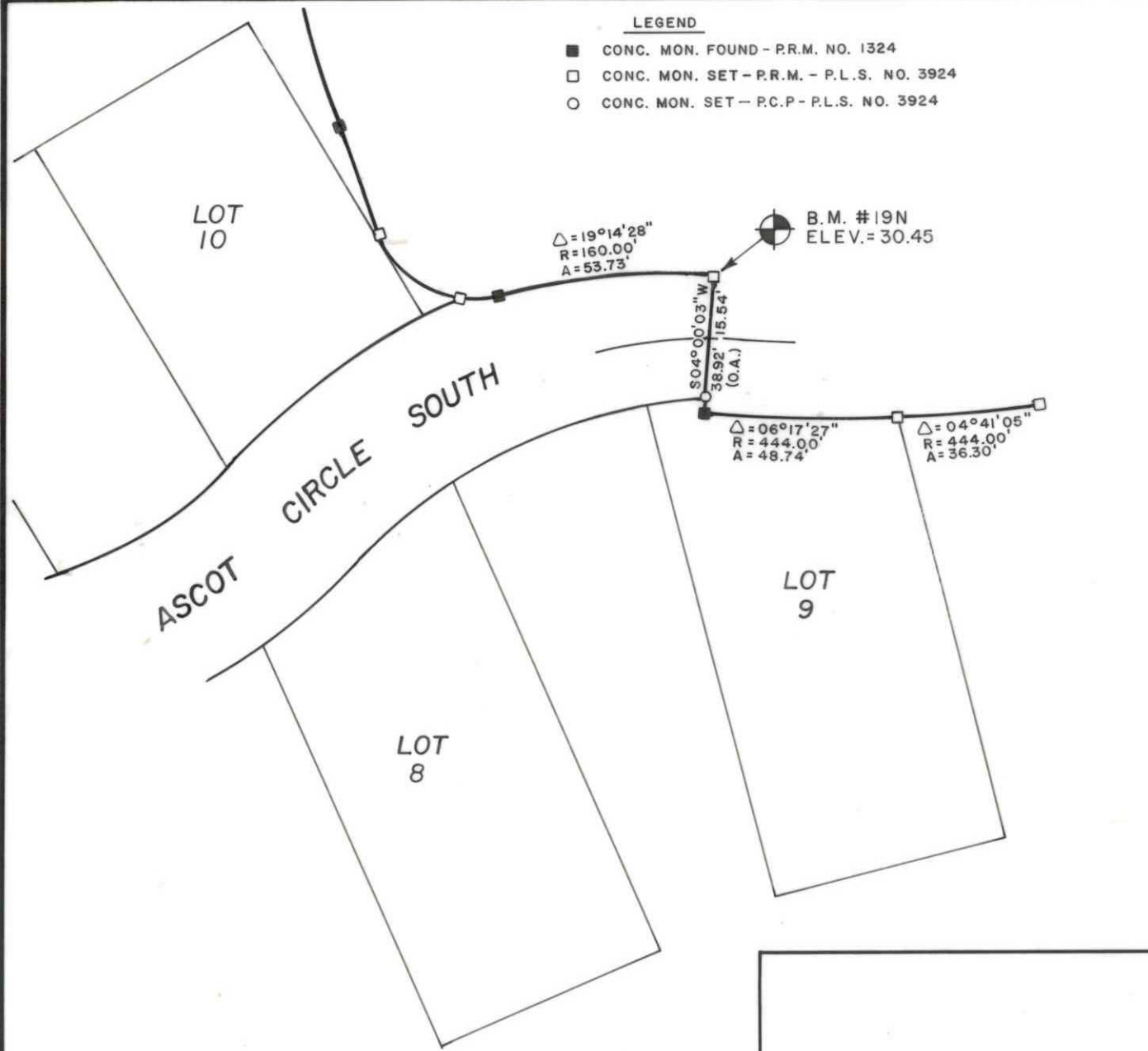
ELEVATIONS SHOWN HEREON ARE RELATIVE TO THE NATIONAL GEODETIC VERTICAL DATUM (N.G.V.D.) OF 1929 BASED ON NATIONAL OCEAN SURVEY (N.O.S. FORMERLY U.S.C. & G.S.) BENCH MARK B93 (NOW DESTROYED).



LONGWOOD VILLAS UNIT 3

SARASOTA COUNTY
TRANSPORTATION DEPARTMENT
ENGINEERING DIVISION

				BENCH MARK DATA SHEET		ELEV.
				DATE DRAWN: 5/23/88 BY: SCB		29.84
				REF: P.B. 32 PG. 26 DATE		BM. NO.
				ELEV. BASED ON BM. NO. USC & GS B93		19 L
REVISIONS						
DATE	TYPE	F.B. PG.	BY			



LONGWOOD VILLAS, UNIT 5
P.B. 34 PG. 27

SARASOTA COUNTY			
TRANSPORTATION DEPARTMENT			
ENGINEERING DIVISION			
BENCH MARK DATA SHEET			ELEV. 30.45
DATE DRAWN: 8-20-90 BY: SDS			BM. NO. 19N
SET BY S,W,&N INC.			ELEV. BASED ON B.M. NO. N.O.S B93

DATE	TYPE	F.B. PG.	BY
REVISIONS			