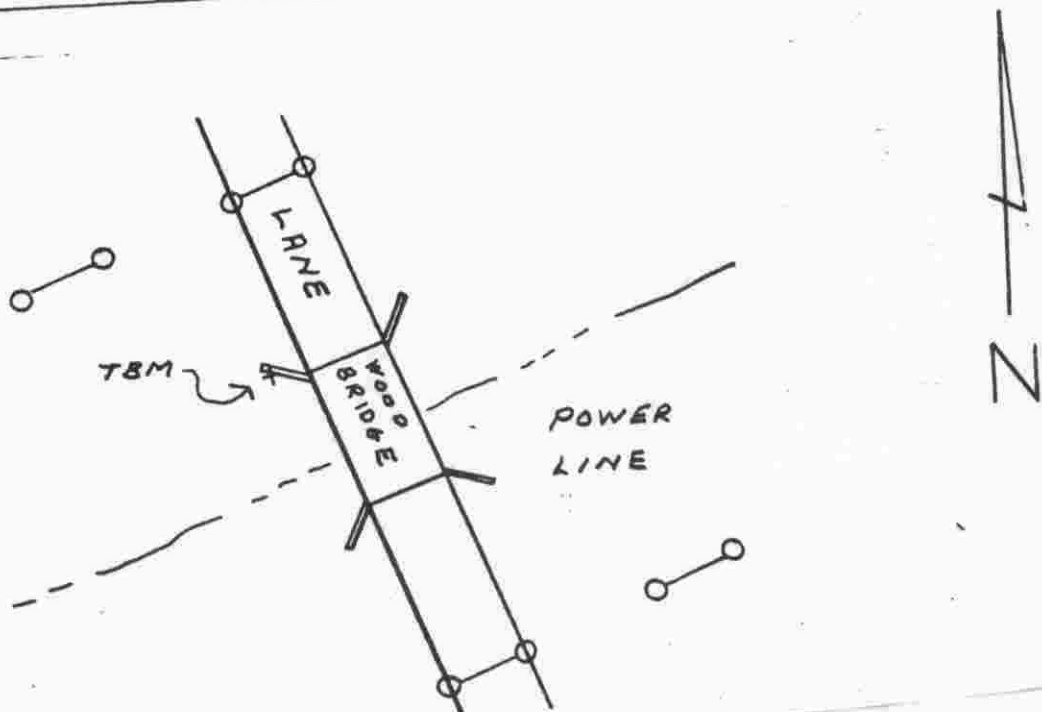
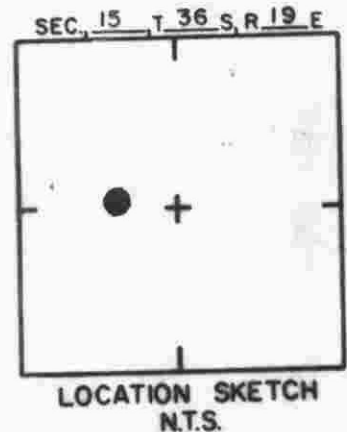


TO REACH THE MARK FROM CENTER SEC 15;  
 GO WEST ± 700' TO POWERLINE 5' TBM;  
 TBM IS 3/4" NUT SET VERTICALLY IN NW WOOD  
 WINGWALL



**SARASOTA COUNTY**  
 TRANSPORTATION DEPARTMENT  
 ENGINEERING DIVISION

**BENCH MARK  
 DATA SHEET**

ELEV.  
37.93

DATE DRAWN: 3-3-87 BY: RJJ

BM. NO.

REF: SWFWMD GWL 157 DATE 12/80

207

DATE	TYPE	FB. PG.	BY
------	------	---------	----

**REVISIONS**

ELEV. BASED ON BM. NO. NOS