

CELERY FIELDS  
RETENTION AREA

WATER'S EDGE  
(AT LOW WATER)

WIER

TOE OF SLOPE

TOP OF BANK

SARCO BM  
ALUMINUM DISK

CONC. WALK

POST & CABLE GATE

DITCH

ACCESS  
RD.

DITCH

0.5 MI.

TO I-75 PALMER BLVD. WEST BOUND  
SINGLE LANE

CONC. ARCH CULVERT

GRASS MEDIAN

PALMER BLVD. EAST BOUND  
SINGLE LANE

DITCH

DITCH

POST & CABLE GATE

TOP OF BANK

TOE OF SLOPE

HEAD WALL

WATER'S EDGE  
(AT LOW WATER)

FLO 3

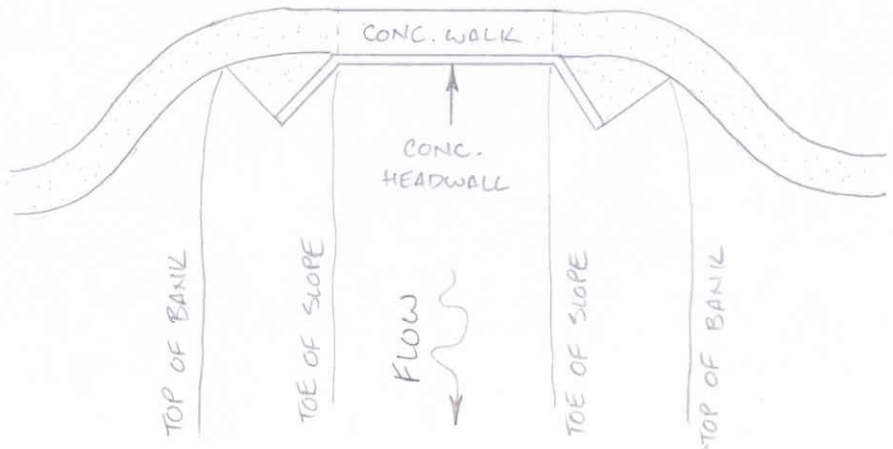
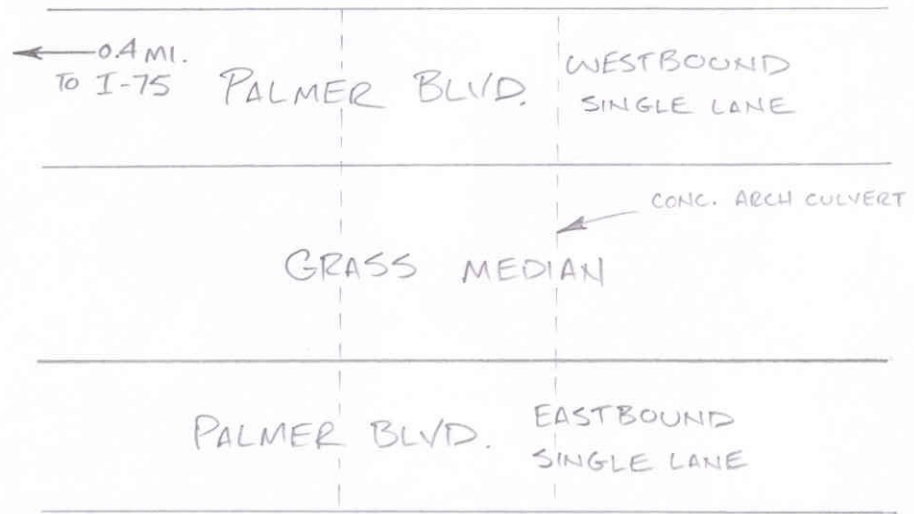
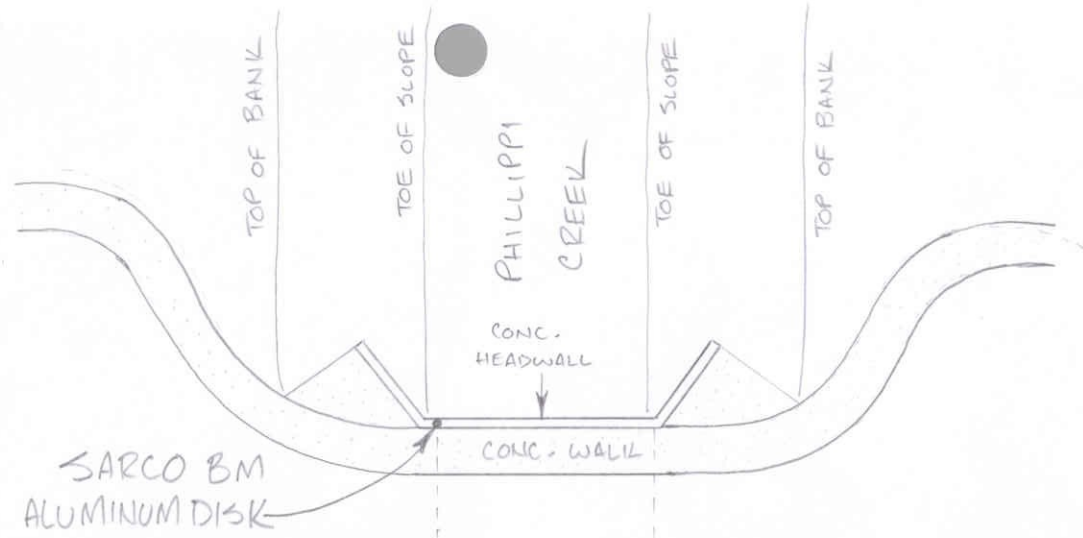
CELERY  
FIELDS  
RETENTION  
AREA



8/27/01

SARCO BM 237-A  
ALUMINUM DISK ON WIER  
ELEV. 22.134' NGVD 29  
N. 1087856.038' FLA. W. 83  
E. 513607.215'  
ELEV. BASED ON SARCO BM 238

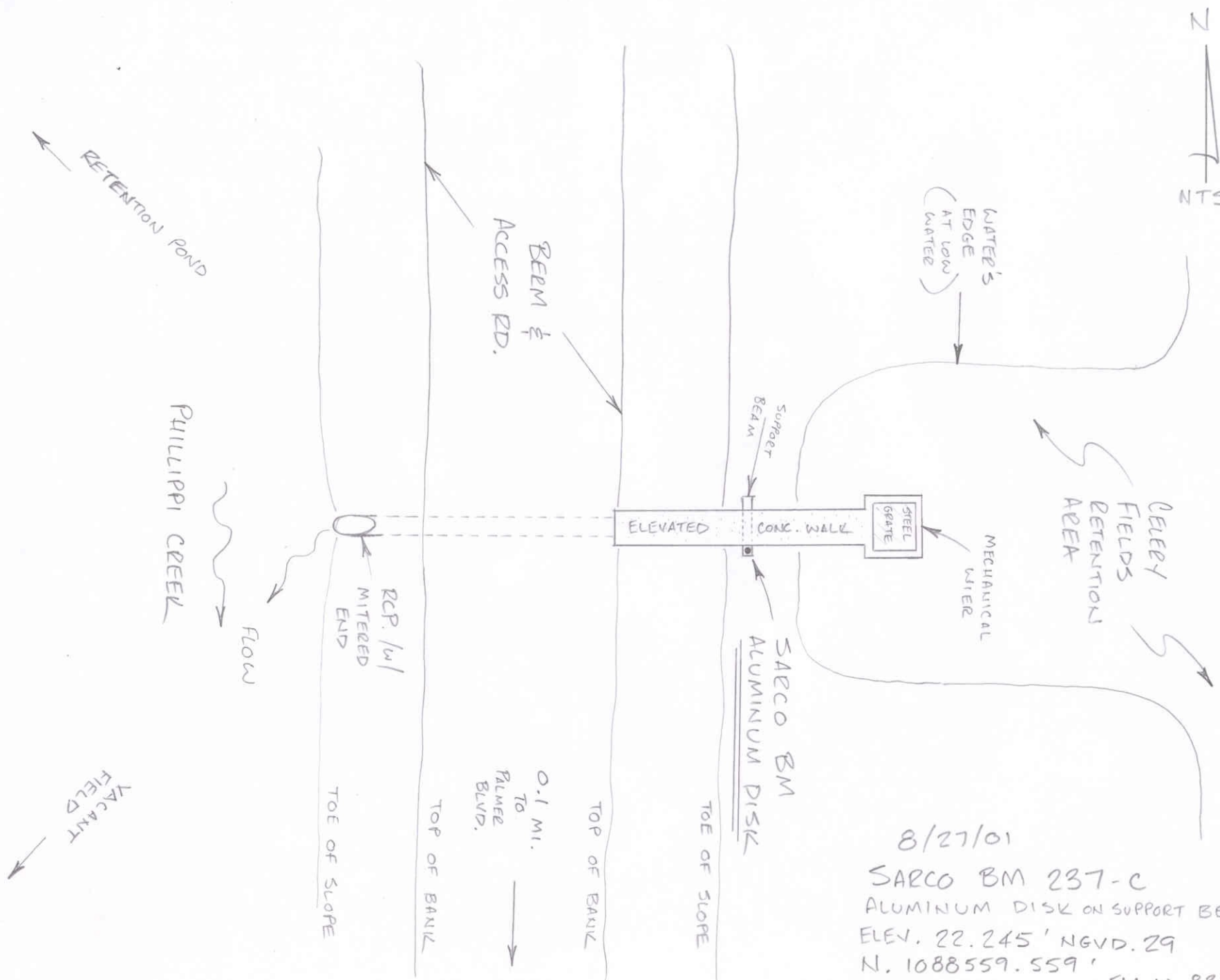
DL1/10



8/27/01

SARCO BM 237-B  
 ALUMINUM DISK ON HEADWALL  
 ELEV. 22.917' NGVD. 29  
 N. 1087850.168', FL. W. 83  
 E. 512945.957'  
 ELEV. BASED ON SARCO BM 238

DL1/9



8/27/01  
 SARGO BM 237-C  
 ALUMINUM DISK ON SUPPORT BEAM  
 ELEV. 22.245' NGVD. 29  
 N. 1088559.559'  
 E. 513043.577' FLA.W. 83  
 ELEV. BASED ON SARGO BM 238

DL1/13

BEAM &  
ACCESS RD.

WATER'S  
EDGE  
AT LOW  
WATER

GLEEY  
FIELDS  
RETENTION  
AREA

ELEVATED

CONC. WALK

STEEL  
GATE

MECHANICAL  
WIER

Support  
BEAM

SARGO BM  
ALUMINUM DISK

TOE OF SLOPE

TOP OF BANIK

0.1 MI.  
TO  
PALMER  
BLVD.

TOP OF BANIK

TOE OF SLOPE

RCP. 16"  
MITERED  
END

FLOW

PULLIPPI CREEK

RETENTION POND

VACANT  
FIELD

0.4 MI.  
TO  
I-75