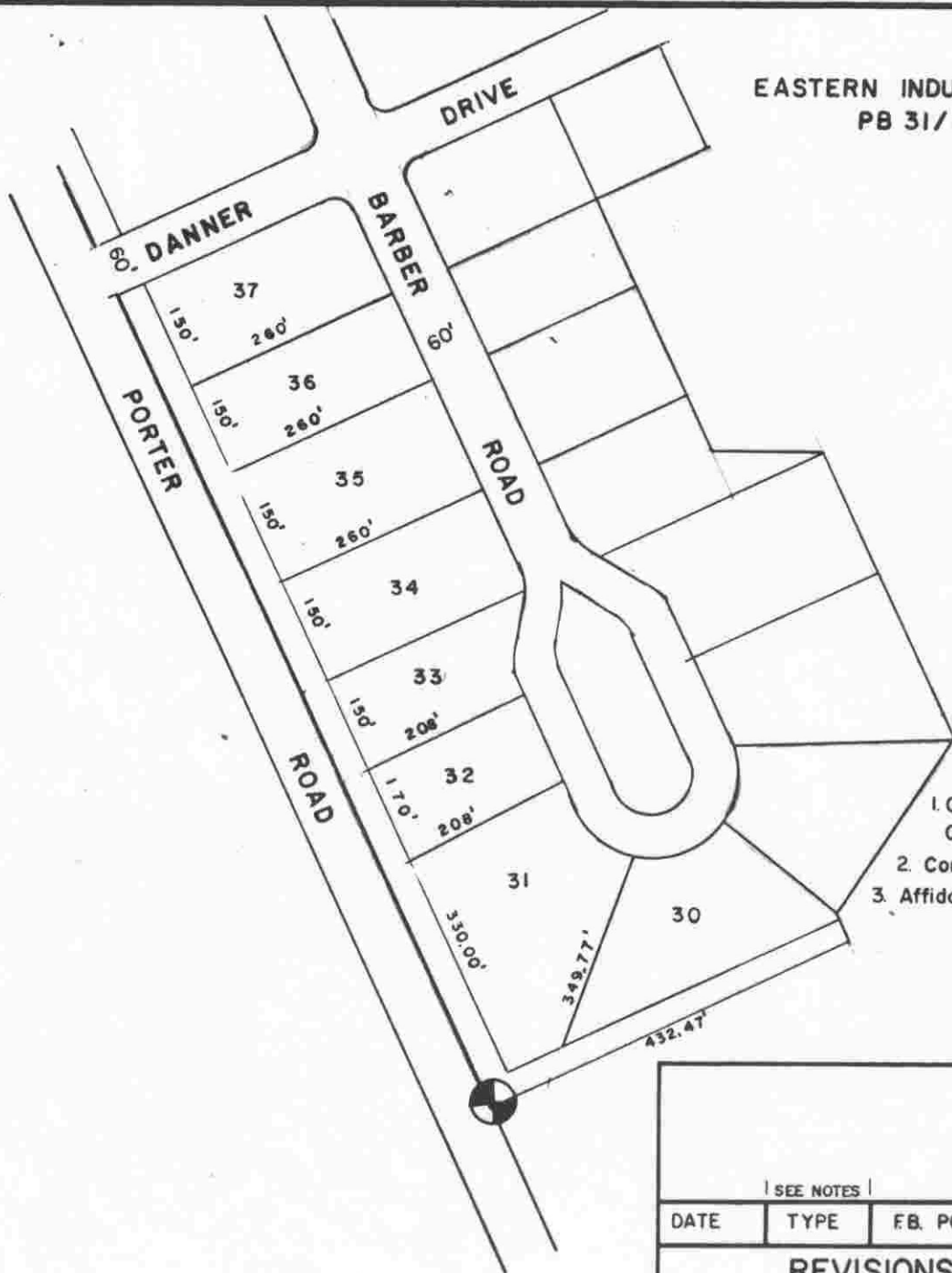
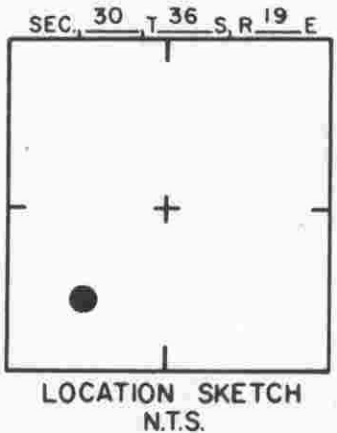
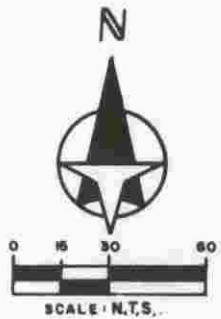


SARASOTA COUNTY
TRANSPORTATION DEPARTMENT
ENGINEERING DIVISION

		BENCH MARK DATA SHEET		ELEV.
				27.23
DATE		DATE DRAWN: JUNE 1983 BY: DBP		BM. NO.
		REF: F.B. BM PG. 238 DATE ?		238
REVISIONS		ELEV. BASED ON B.M. NO. ?		

DATE	TYPE	F.B. PG.	BY
REVISIONS			

EASTERN INDUSTRIAL PARK, Sec. 1
PB 31/31



- NOTES:
1. Original published elev. of 26.23' per P.B. 31/31 established by Cliff Alberti, P.L.S. found to be in error.
 2. Corrected elev. of 26.03' established per F.B. 280 PG. 34.
 3. Affidavit confirming error in O.R.B. _____ PG. _____, DATED _____.

SARASOTA COUNTY
TRANSPORTATION DEPARTMENT
ENGINEERING DIVISION

BENCH MARK
DATA SHEET

ELEV.
26.03'
BM. NO.
238 A

DATE DRAWN: NOV 1986 BY: RJJ
SET BY: MOSBY ENG.
ELEV. BASED ON BM. NO. 238

REVISIONS			
DATE	TYPE	F.B. PG.	BY
SEE NOTES			



0.4 MI.
TO I-75

0.5 MI.
TO
PALMER
BLVD.

BEAM &
ACCESS RD.

WATERS
EDGE
(AT LOW
WATER)

CONC.
ARCH
CULVERT

CELERY
FIELDS
RETENTION AREA

STEEL
GATE

MECHANICAL
WIER

ELEVATED CONC. WALK

SUPPORT
BEAM

SARCO BM
ALUMINUM
DISK

TOE OF SLOPE

TOP OF BANK

TOP OF BANK

TOE OF SLOPE

CONC.
HEADWALL

PHILIPPI CREEK

Flow

INDUSTRIAL PARK

8/27/01

SARCO BM 238-L
ALUMINUM DISK ON SUPPORT BEAM
ELEV. 23.368' NGVD. 29
N. 1085423.141' FLA. W. 83
E. 513038.178'
ELEV. BASED ON SARCO BM 238

DL11/12