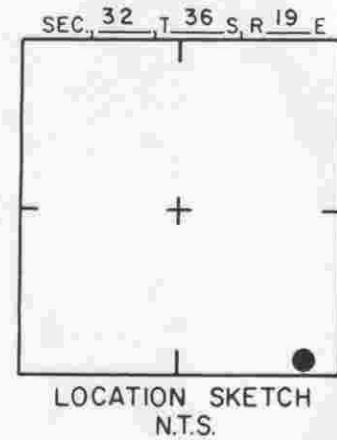
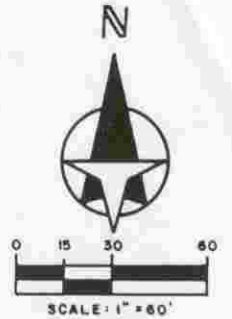


NOTE: RESET 3-16-90 BY ED SAMPEY.



SARASOTA COUNTY
TRANSPORTATION DEPARTMENT
ENGINEERING DIVISION

BENCH MARK
DATA SHEET

ELEV.
29.73
BM. NO.

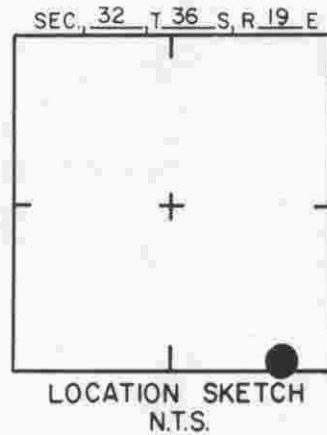
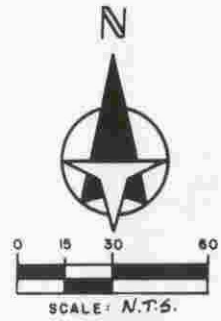
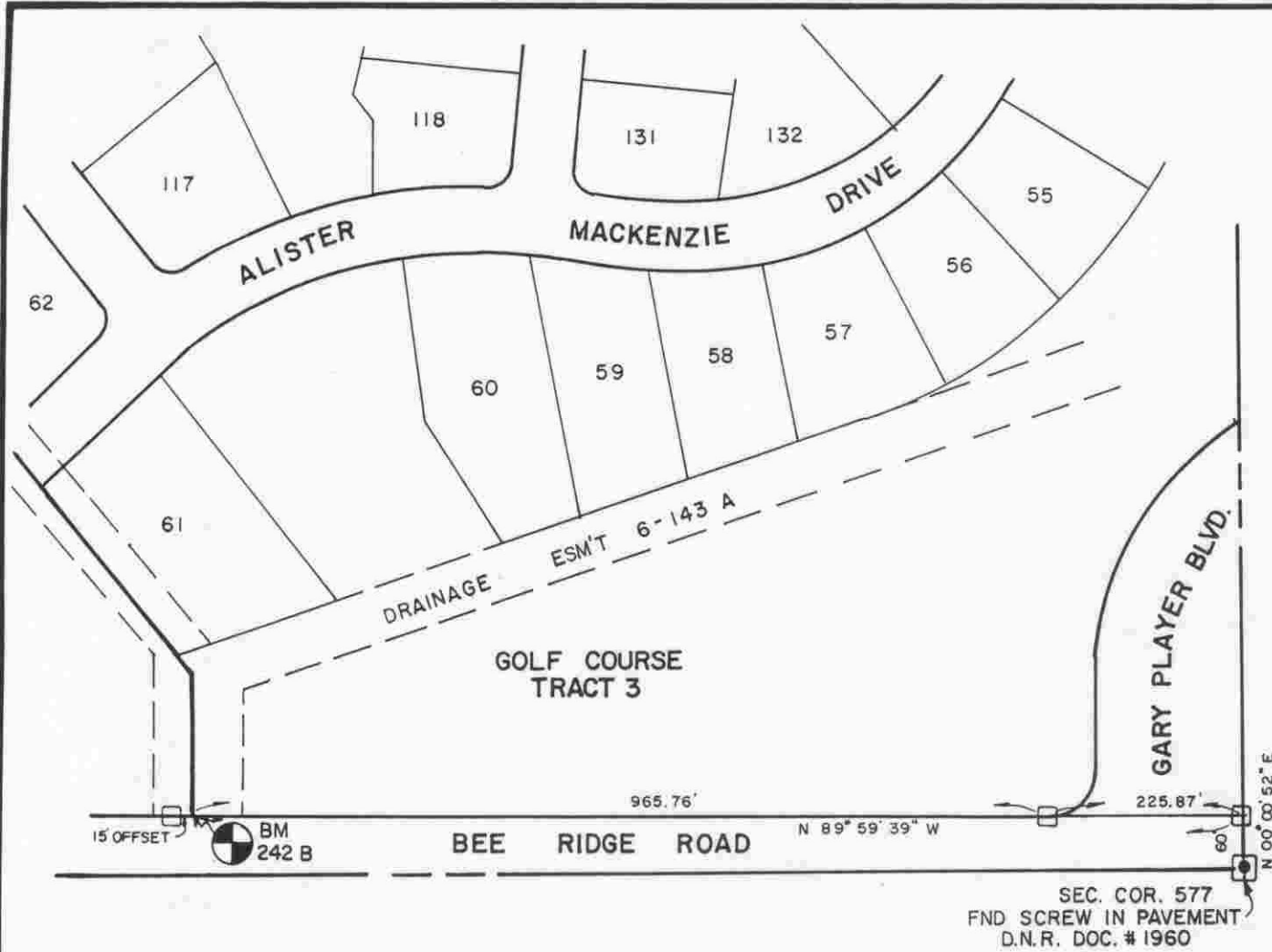
DATE DRAWN: 3-20-89 BY: RJJ

REF: FB. E. SAMPEY PG. 20-21 DATE 9/13/89

R 242A

DATE	TYPE	FB. PG.	BY
REVISIONS			

ELEV. BASED ON BM. NO.



LAUREL OAK ESTATES, SECTION 2 P.B. 34/11

SARASOTA COUNTY
TRANSPORTATION DEPARTMENT
ENGINEERING DIVISION

**BENCH MARK
DATA SHEET**

ELEV.

24.58'

BM. NO.

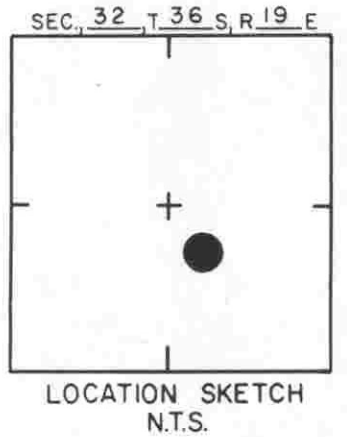
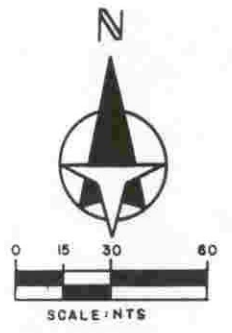
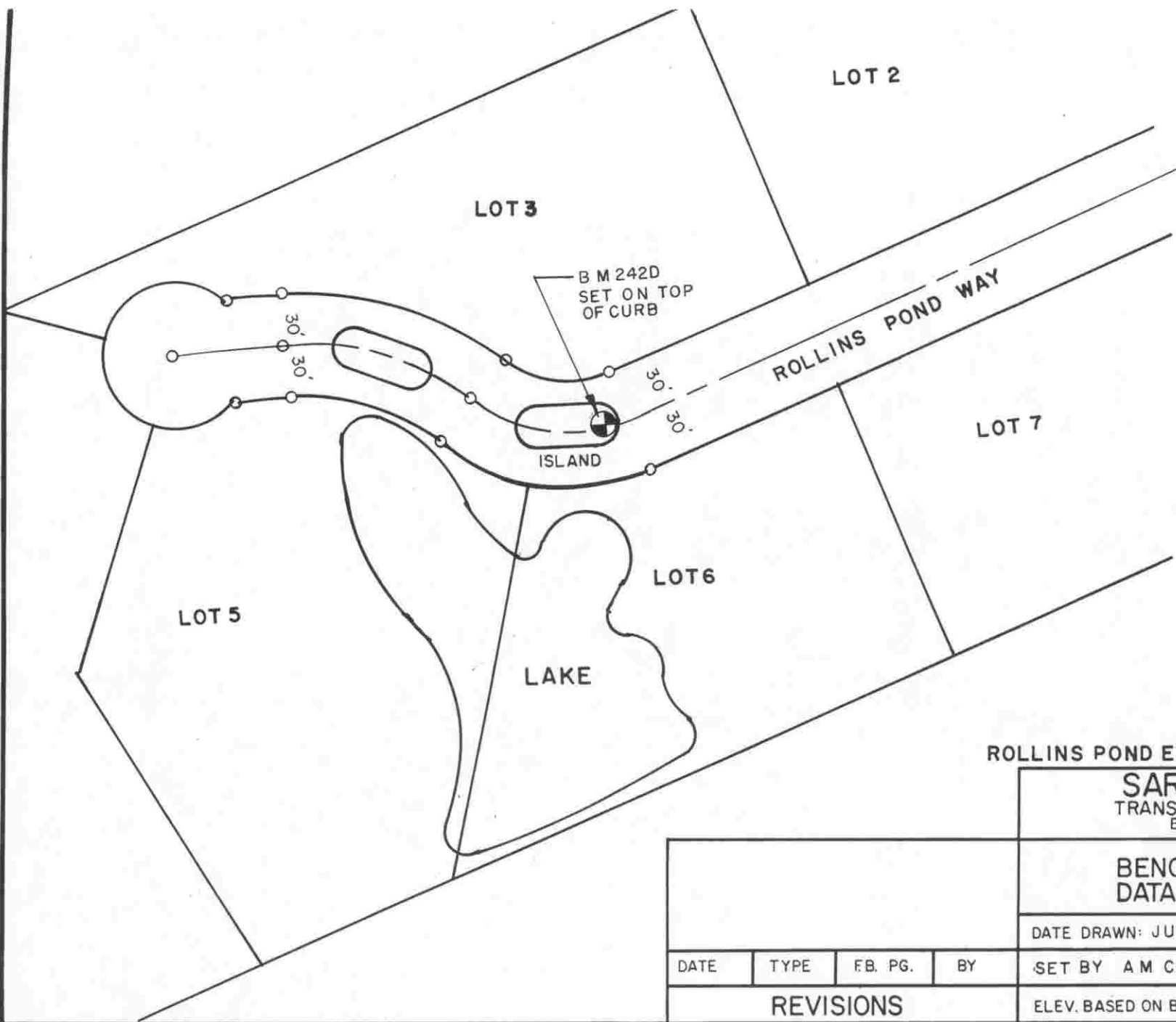
242 B

DATE DRAWN: MAY 31, 1990 BY: KLP

SET BY: BISHOP & ASSOC.

ELEV. BASED ON B.M. NO. N.G.V.D. 1929
244 EL. 37.03'

☐ = P.R.M. SET (# 4349)			
DATE	TYPE	F.B. PG.	BY
REVISIONS			



ROLLINS POND ESTATES PB 34/16A

SARASOTA COUNTY
TRANSPORTATION DEPARTMENT
ENGINEERING DIVISION

BENCH MARK
DATA SHEET

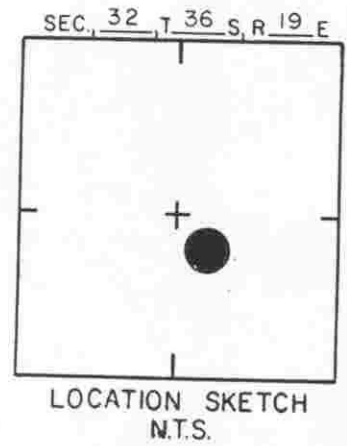
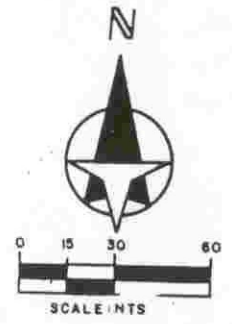
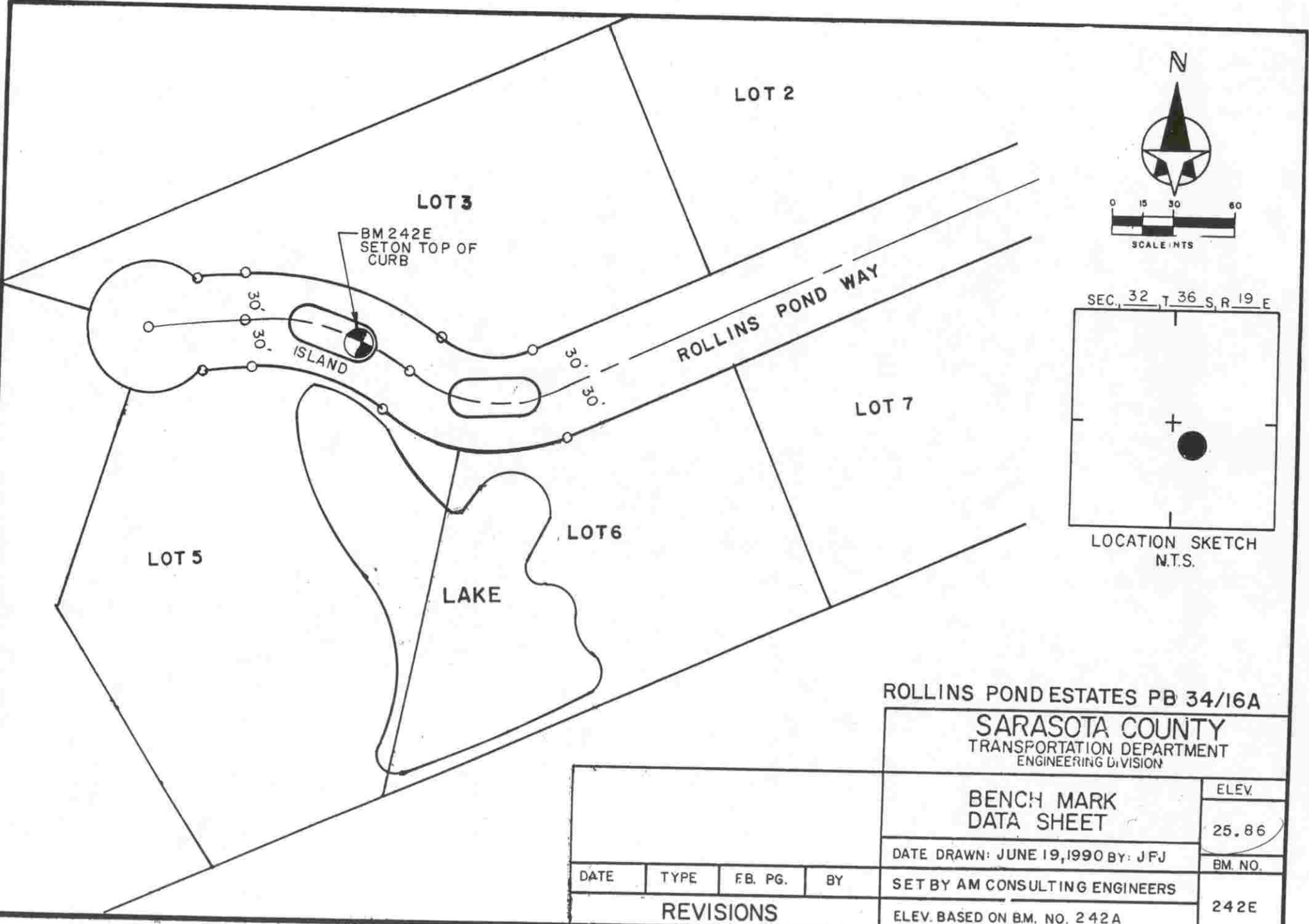
ELEV.
25.96
BM. NO.
242D

DATE DRAWN: JUN 19, 1990 BY: JFJ

SET BY A M CONSULTING ENGINEER

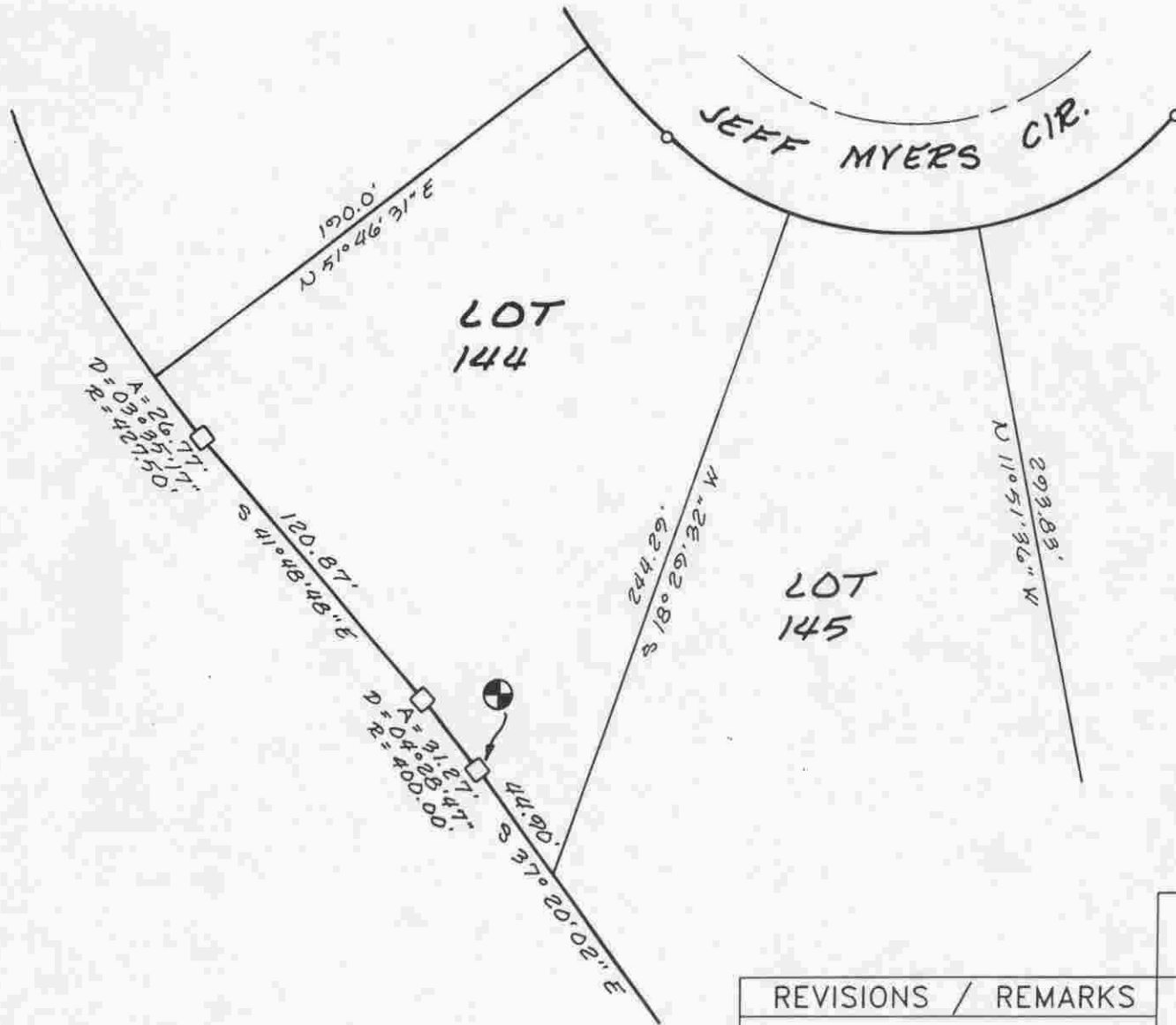
ELEV. BASED ON BM. NO. 242A

DATE	TYPE	FB. PG.	BY
REVISIONS			



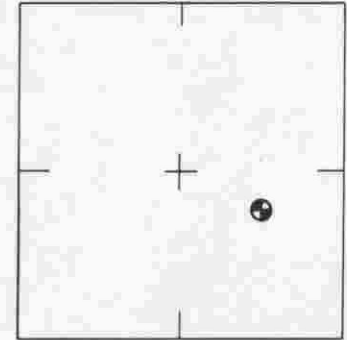
ROLLINS POND ESTATES PB 34/16A
SARASOTA COUNTY
 TRANSPORTATION DEPARTMENT
 ENGINEERING DIVISION

				BENCH MARK DATA SHEET		ELEV.
						25.86
REVISIONS				DATE DRAWN: JUNE 19, 1990 BY: JFJ		BM. NO.
				SET BY AM CONSULTING ENGINEERS		242E
				ELEV. BASED ON B.M. NO. 242A		



SCALE: N.T.S.

SEC. 32, T. 36 S, R. 19 E



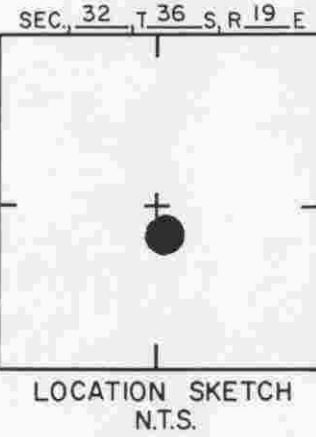
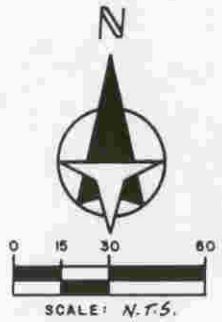
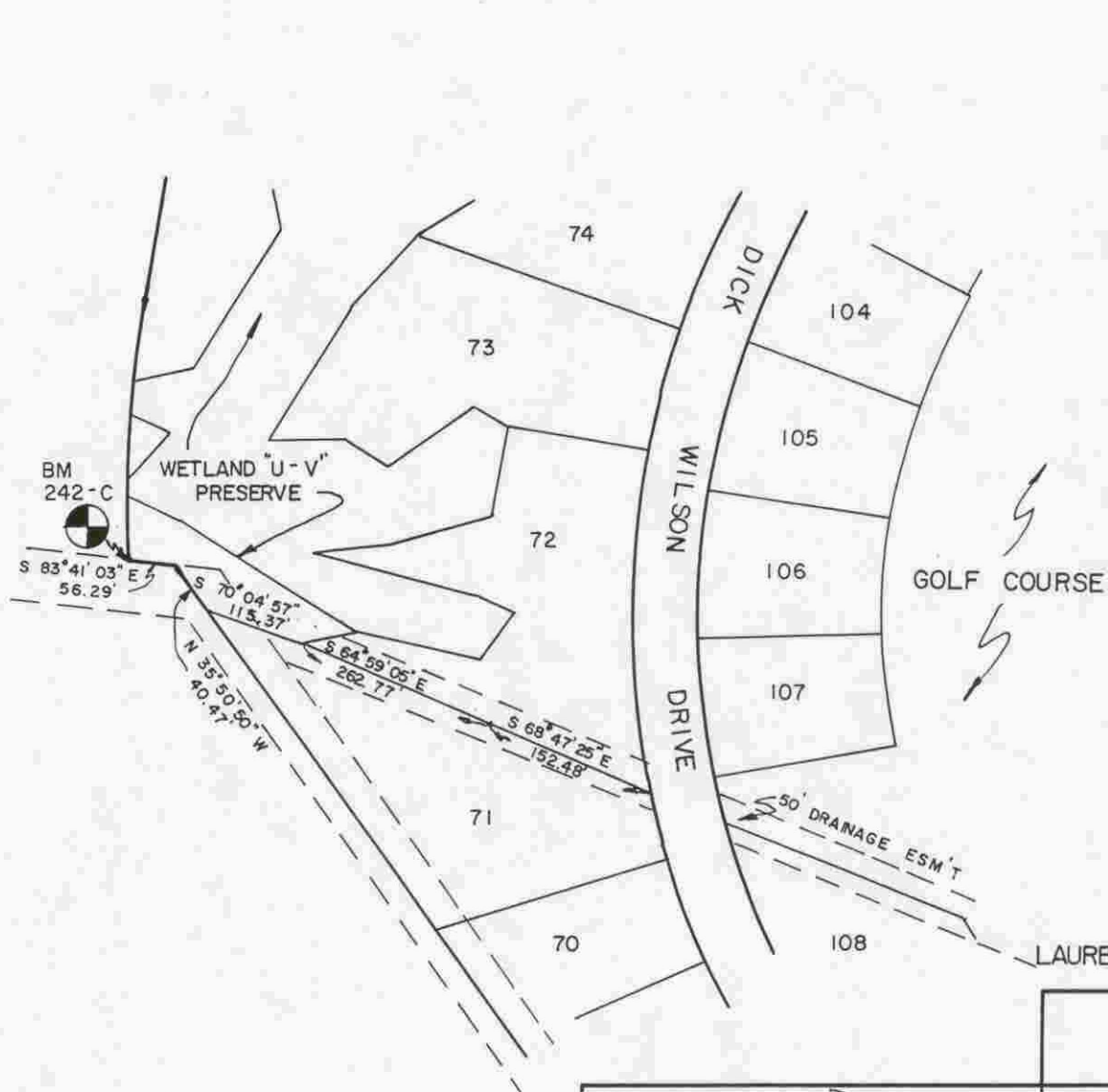
LOCATION SKETCH
N.T.S.

LAUREL OAK ESTATES
SECTION 3

SARASOTA COUNTY
TRANSPORTATION DEPARTMENT
ENGINEERING DIVISION, SURVEY/MAPPING SECTION

REVISIONS / REMARKS
SET BY: BISHOP & ASSOC.

BENCH MARK DATA SHEET		ELEV.
DATE DRAWN: 2-27-91	BY: SDS	28.80'
REF.: P.B. 34 PG. 48	DATE: 2-27-91	B.M. NO.
ELEV. BASED ON B.M. NO. S.C. # 244		242-F



LAUREL OAK ESTATES, SECTION 2 P.B. 34/11

SARASOTA COUNTY
TRANSPORTATION DEPARTMENT
ENGINEERING DIVISION

Revised Per O.R.B. 2382/292				BENCH MARK DATA SHEET		ELEV.
						24.00'
				DATE DRAWN: MAY 31, 1990 BY: KLP		23.03
				SET BY: BISHOP & ASSOC.		BM. NO.
REVISIONS				ELEV. BASED ON B.M. NO. 244 EL. 37.03		R 242 C 242 C