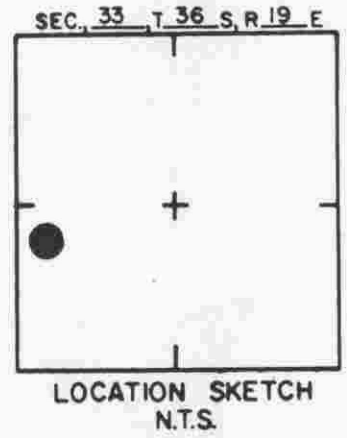
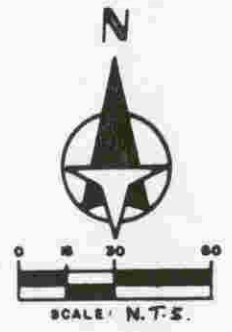
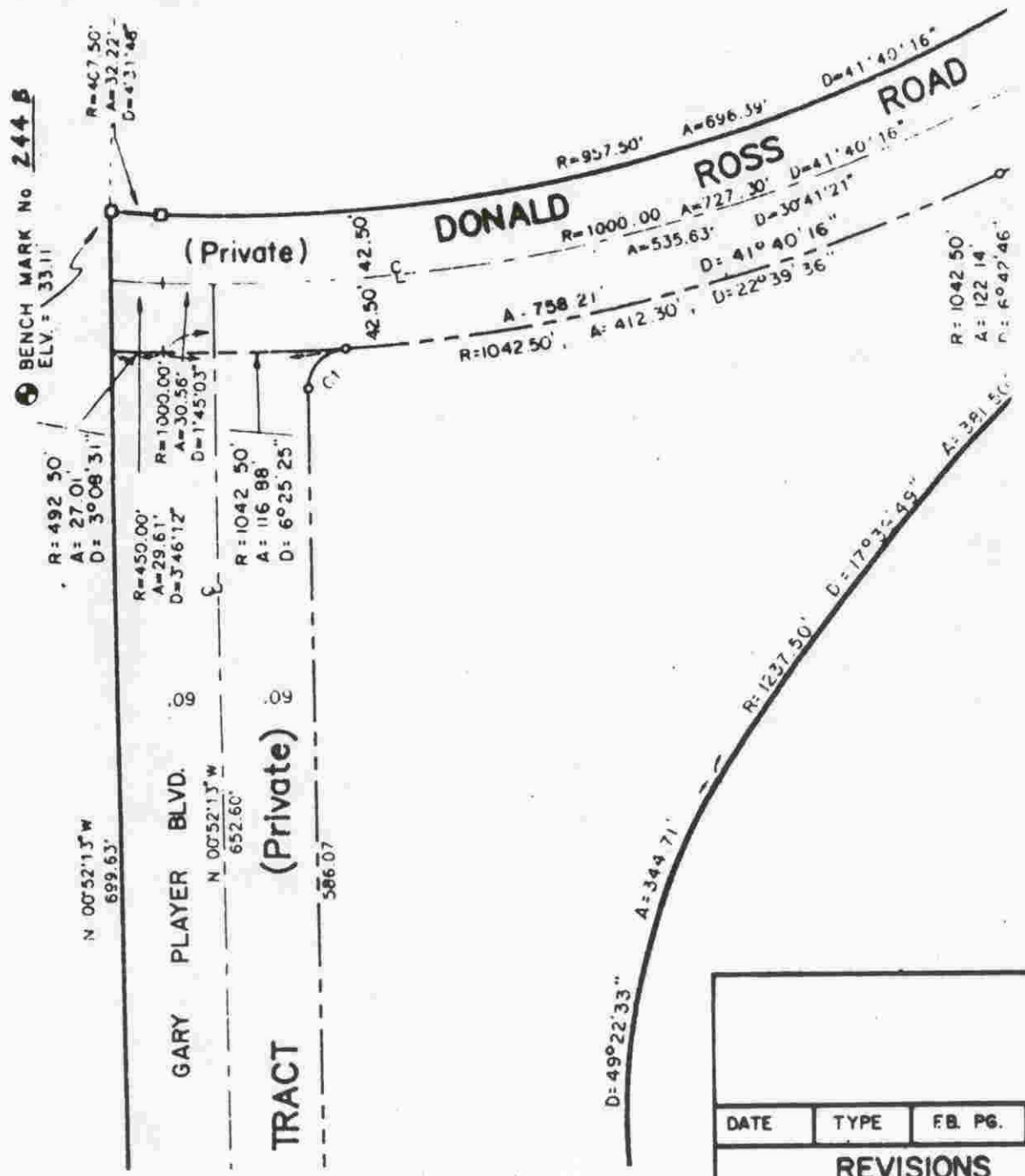


SARASOTA COUNTY
 TRANSPORTATION DEPARTMENT
 ENGINEERING DIVISION

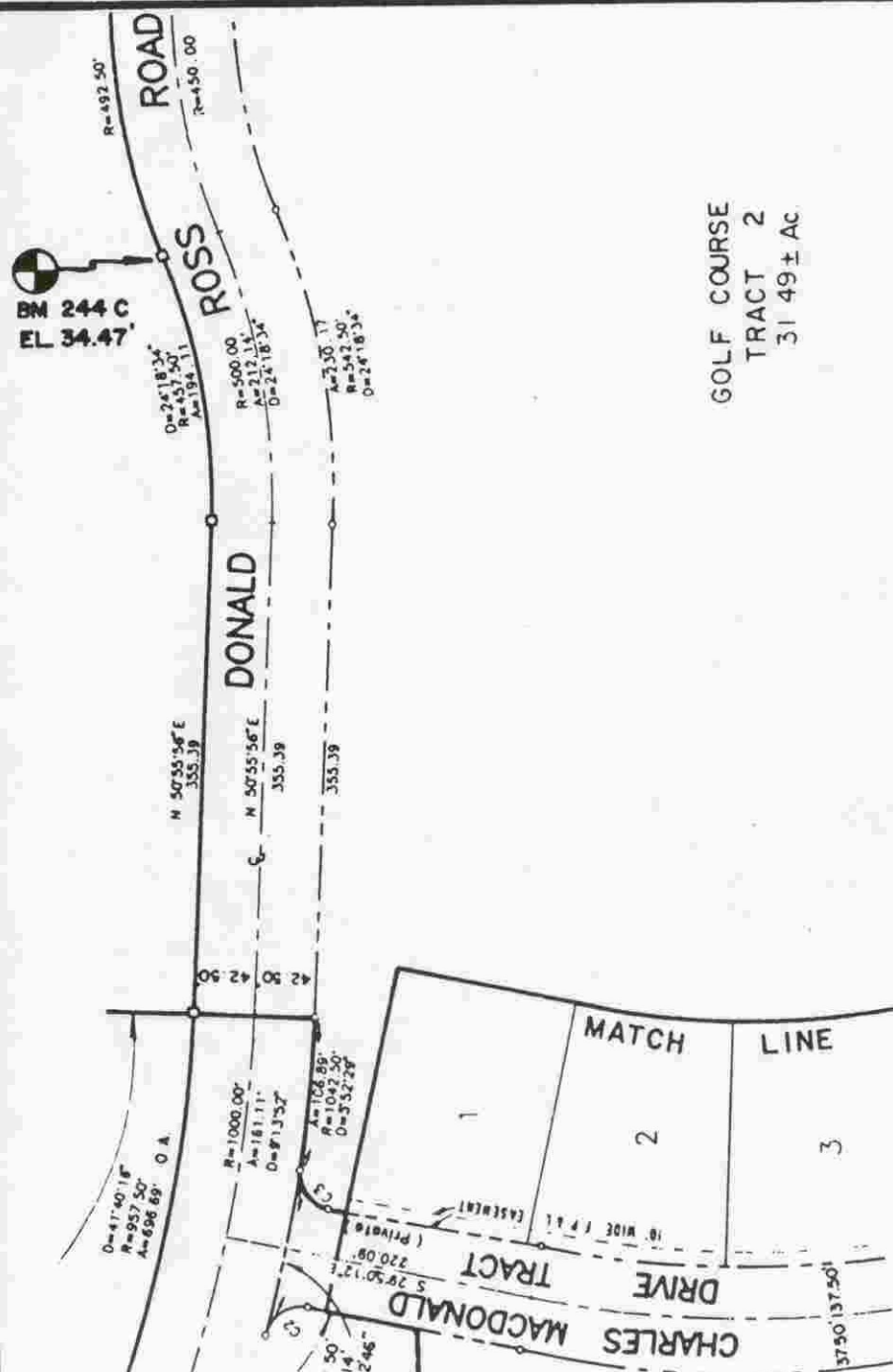
				BENCH MARK DATA SHEET	ELEV.
					37.03
				DATE DRAWN: JUNE 1983 BY: DBP	BM. NO.
DATE	TYPE	F.B. PG.	BY	REF: F.B. BM PG. 244 DATE 9-18-63	244
REVISIONS				ELEV. BASED ON B.M. NO. ?	



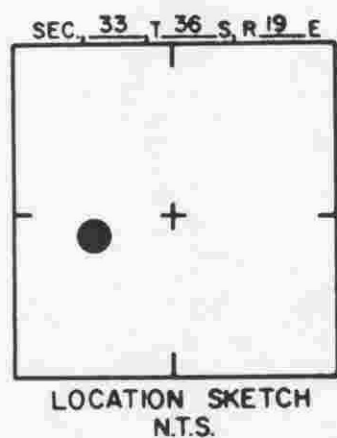
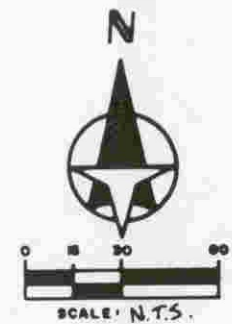
LAUREL OAK ESTATES, SEC. 1 P.B.34/5-5H

SARASOTA COUNTY
TRANSPORTATION DEPARTMENT
ENGINEERING DIVISION

				BENCH MARK DATA SHEET		ELEV.
						33.11'
REVISIONS				DATE DRAWN: MAR. 5, 1990 BY: KLP		BM. NO.
				SET BY: BISHOP & ASSOC.		244 B
				ELEV. BASED ON B.M. NO. 244 EL. 37.03'		



GOLF COURSE
TRACT 2
31.49 ± AC



LAUREL OAK ESTATES, SEC. 1 PB. 34/5-5H

SARASOTA COUNTY
TRANSPORTATION DEPARTMENT
ENGINEERING DIVISION

**BENCH MARK
DATA SHEET**

ELEV.

34.47'

DATE DRAWN: MAR. 5, 1990 BY: KLP

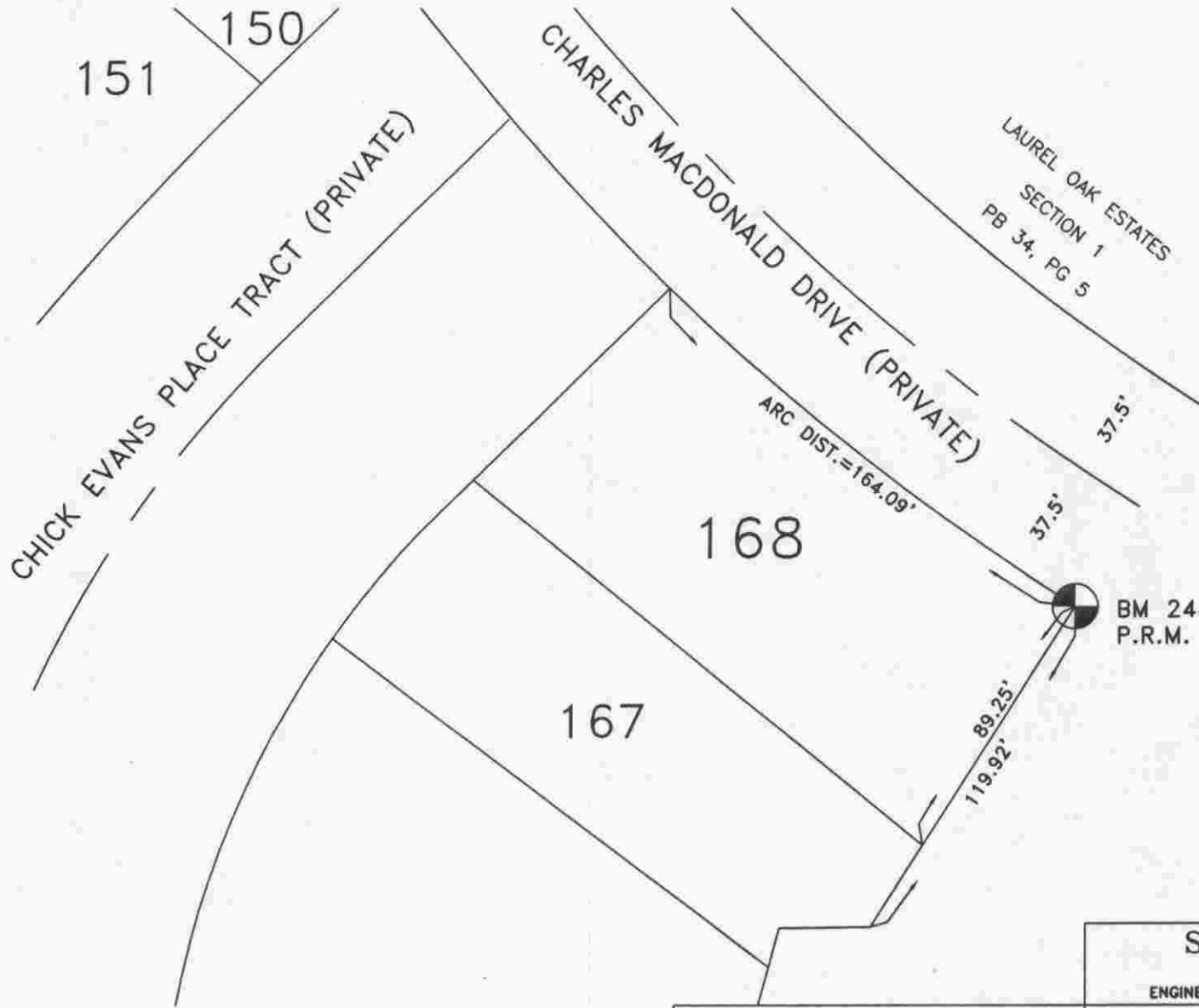
BM. NO.

SET BY: BISHOP & ASSOC.

244 C

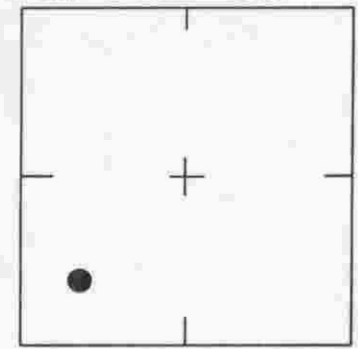
ELEV. BASED ON BM. NO. 244 EL. 37.03'

DATE	TYPE	FB. PG.	BY
REVISIONS			



SCALE: N.T.S.

SEC., 33 , T. 36 S, R. 19 E



LOCATION SKETCH
N.T.S.

LAUREL OAK ESTATES
SECTION 4
PLAT BOOK 35, PAGE 6

REVISIONS / REMARKS
ELEVATION CHANGE PER O.R.B. 2382 PG. 293
SET BY: BISHOP & ASSOCIATES

SARASOTA COUNTY TRANSPORTATION DEPARTMENT ENGINEERING DIVISION, SURVEY/MAPPING SECTION	
BENCH MARK DATA SHEET	ELEV. 33.11'
	B.M. NO. 244-D
DATE DRAWN: 5-14-91 BY: GES	
REF.: PB. 35 PG. 6 DATE: 4-24-91	
ELEV. BASED ON B.M. NO. 244	

