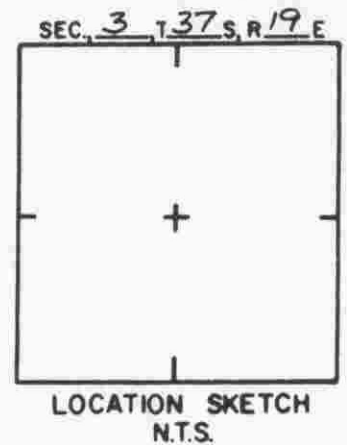
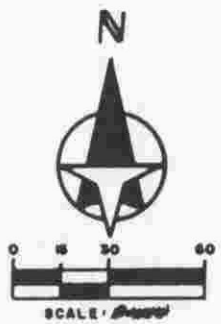


PREMISES DESCRIBED IN
OR LEASE DATED
LANDS TO MISTY CREEK
IN O.R. 1898, P. 0311.

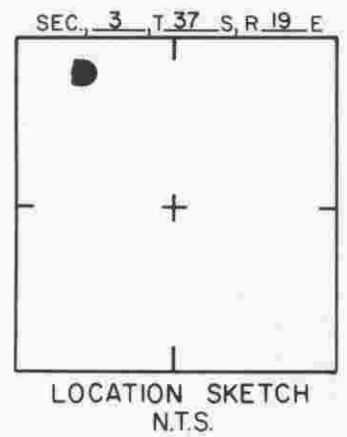
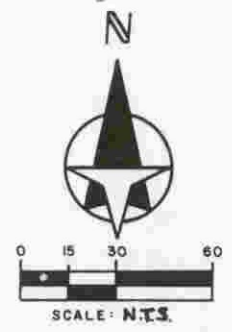
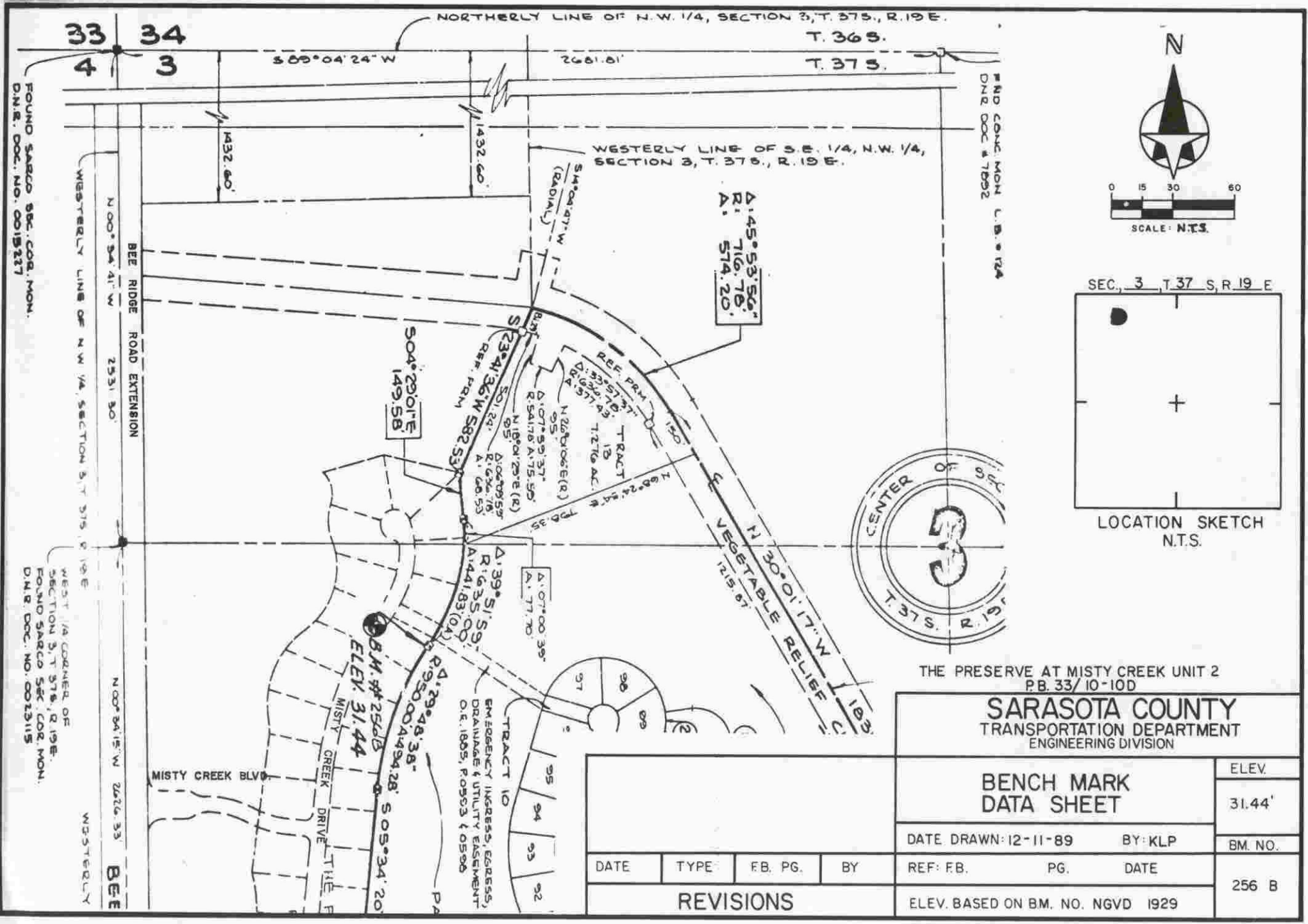


BM 256 A
BENCH MARK
ELEV. 33.61
TOP OF CONC. MON.

SARASOTA COUNTY TRANSPORTATION DEPARTMENT ENGINEERING DIVISION			
BENCH MARK DATA SHEET			ELEV. 33.61
DATE DRAWN: 10-23-86 BY: WFW			BM. NO.
DATE	TYPE	FB. PG.	BY
			REF: P.B. 31 PG. 28 DATE 10-886
REVISIONS			ELEV. BASED ON NGVD. BM. 256 A

MISTY CREEK BLYD.

SHEET 5



THE PRESERVE AT MISTY CREEK UNIT 2
P.B. 33/10-10D

SARASOTA COUNTY
TRANSPORTATION DEPARTMENT
ENGINEERING DIVISION

**BENCH MARK
DATA SHEET**

ELEV.
31.44'
BM. NO.
256 B

DATE DRAWN: 12-11-89 BY: KLP
REF: F.B. PG. DATE
ELEV. BASED ON BM. NO. NGVD 1929

DATE	TYPE	FB. PG.	BY
REVISIONS			

FOUND SARCO SEC. COR. MON.
D.M.R. DOC. NO. 0019217

WEST 1/4 CORNER OF
SECTION 3, T. 37 S., R. 19 E.
FOUND SARCO SEC. COR. MON.
D.M.R. DOC. NO. 0013115

FIND CONC. MON. U.S. 124
D.M.R. DOC. # 17992

