

AND ENCLOSE THE ROADWAY EASEMENT.
INCLUDE THE ROADWAY EASEMENT.

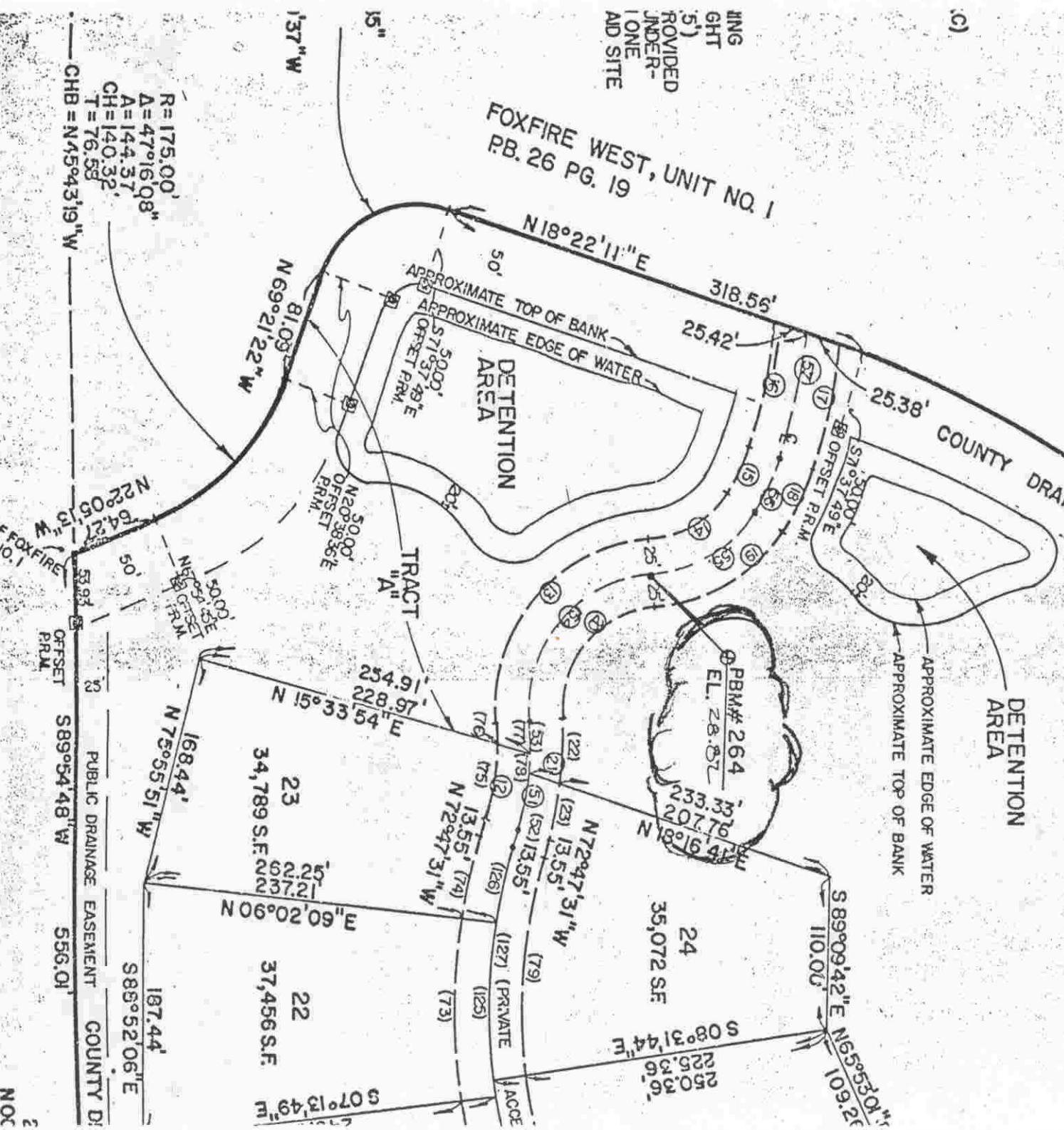
R = 750.00'
A = 24°45'52"
A = 324.16'
CH = 321.65'
T = 164.65'
CHB = N 30°45'07"E

(c)
RING
GHT
(5')
ROVIDED
NDER-
ONE
AD SITE

FOXFIRE WEST, UNIT NO. 1
PB. 26 PG. 19

FOXFIRE PB. 26
EAST LINE OF A 50' DRAINAGE EASEMENT
N 43°08'03"E
PUBLIC DRAINAGE EASEMENT

TRACT "A"
2,052,048 S.F.



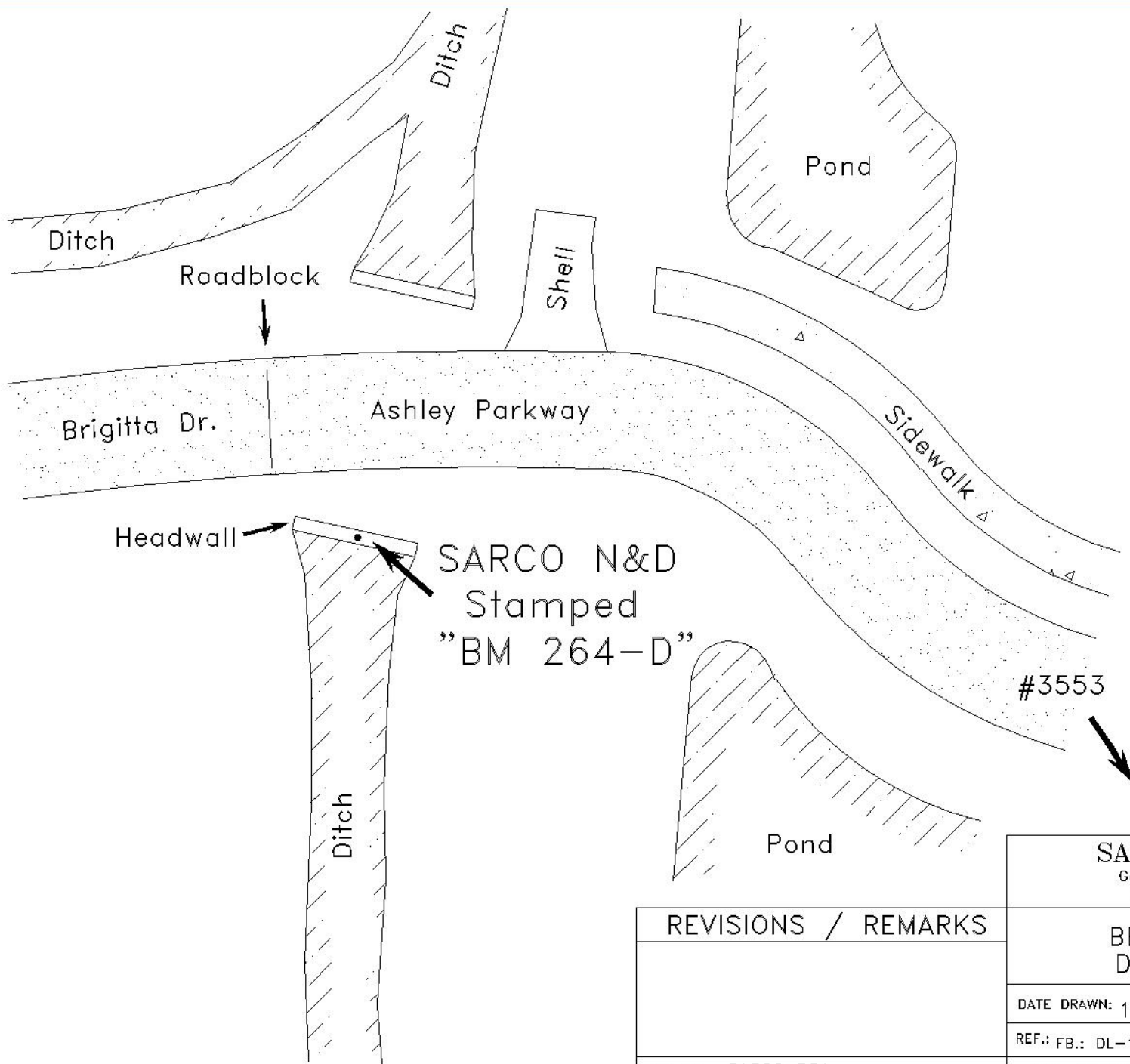
R = 175.00'
A = 47°16'08"
A = 144.37'
CH = 140.32'
T = 76.58'

CHB = N 45°43'19"W

N 22°05'13"W
64.27'
53.94'
OFFSET PRM.

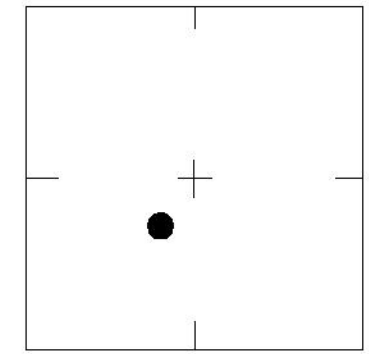
PUBLIC DRAINAGE EASEMENT
COUNTY DRAINAGE DITCH NO. 1
N 22°05'13"W
64.27'
53.94'
OFFSET PRM.
589°54'48"W
556.01'

NOC



SCALE: N.T.S.

SEC., 7 , T 37 S, R 19 E



LOCATION SKETCH N.T.S.

SARASOTA COUNTY
 Geomatics Service Center
 SURVEY/MAPPING SECTION

REVISIONS / REMARKS
SET BY: SARCO 561

BENCH MARK DATA SHEET		ELEV.
DATE DRAWN: 12/31/03 BY: ND		28.04
REF.: FB.: DL-1 PG.: 149 DATE: 12/30/03		NGVD 29'
ELEV. BASED ON DOT B.M. NO. 175 83 A50		B.M. NO.
		264-D