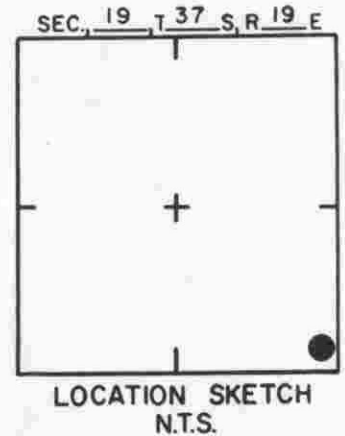
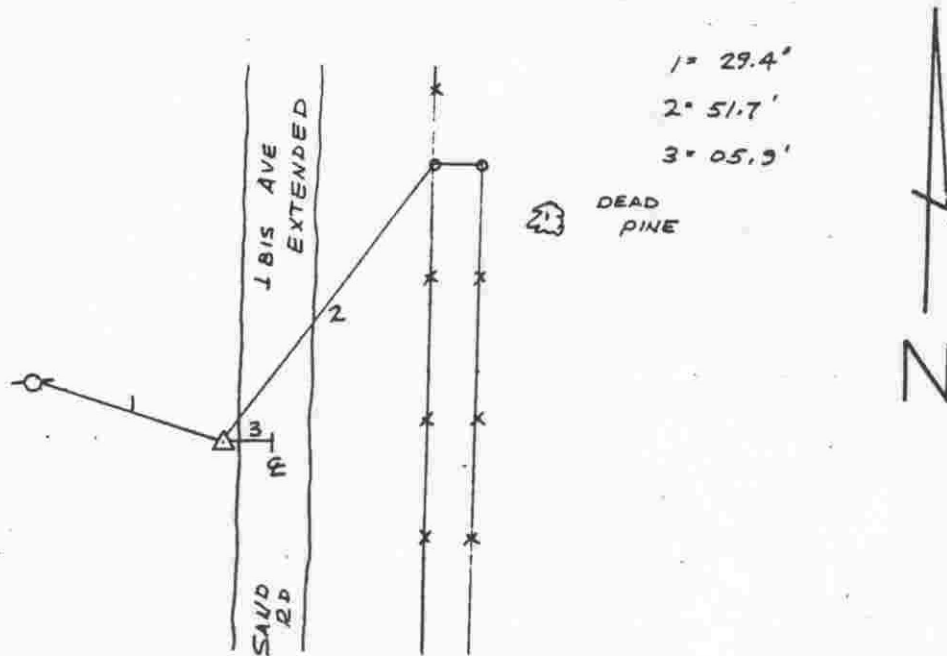


TO REACH THE MARK FROM THE INTERS HAWKINS RD. & IBIS AVE GO ±
 1.5 MILES S. TO STA ON THE RIGHT. STA IS A RE-BAR SET
 FLUSH WITH GROUND.



SARASOTA COUNTY
 TRANSPORTATION DEPARTMENT
 ENGINEERING DIVISION

**BENCH MARK
 DATA SHEET**

ELEV.

21.47'

BM. NO.

288

DATE DRAWN: 2-6-87

BY: RJJ

REF: SWFWMD GWL 11

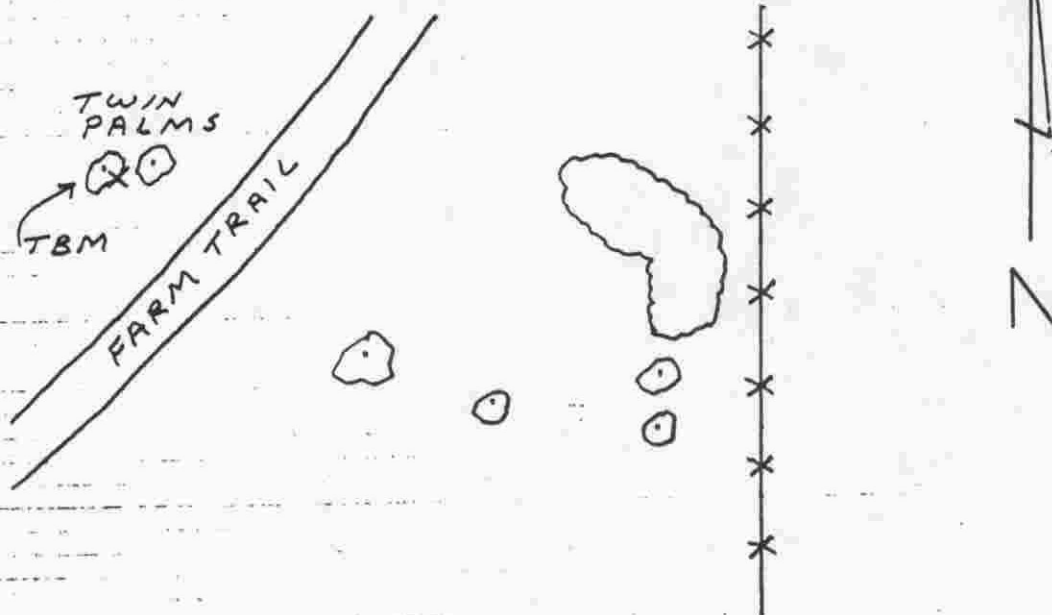
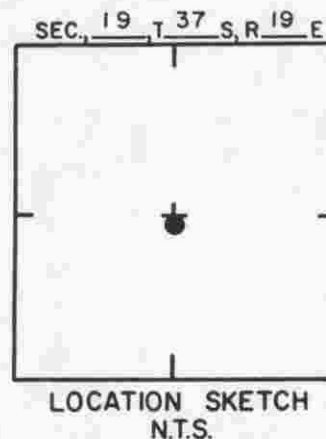
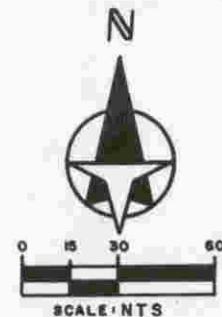
DATE 10/80

ELEV. BASED ON BM. NO. DOT

DATE	TYPE	FB. PG.	BY
REVISIONS			

REVISIONS

TO REACH THE MARK FROM AT Q SEC. 19, TBM IS A
60 D-NAIL E. SIDE OF W. MOST PALM



SARASOTA COUNTY
 TRANSPORTATION DEPARTMENT
 ENGINEERING DIVISION

**BENCH MARK
 DATA SHEET**

ELEV.

23.03'

BM. NO.

288A

DATE DRAWN: 2-9-87

BY: RJJ

REF: SWFWMD GWL 106

DATE 11/80

DATE	TYPE	FB. PG.	BY
REVISIONS			

ELEV. BASED ON BM. NO. NOS