

TO REACH THE MARK FROM AT INTER GOCIO RD & BENEVA RD;
 TBM IS RR SPIKE IN N FACE P-POLE



RES

Sec 9
 Sec 10

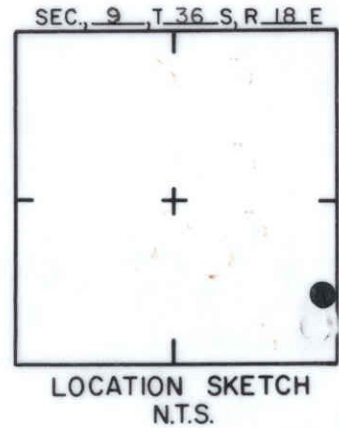
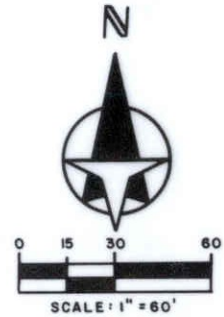
GOCIO RD

3588 TBM

SCHOOL
 YARD

~~BENEVA RD~~
 DOES NOT EXIST

N
 1
 Z



SARASOTA COUNTY
 TRANSPORTATION DEPARTMENT
 ENGINEERING DIVISION

**BENCH MARK
 DATA SHEET**

ELEV.

29.31'

BM. NO.

30B

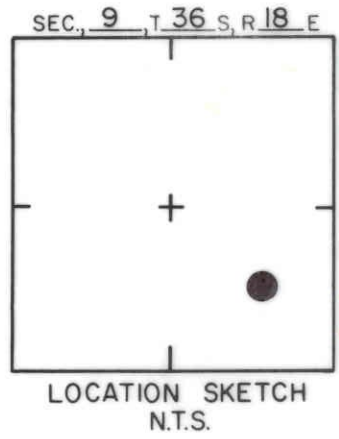
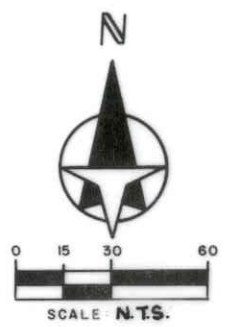
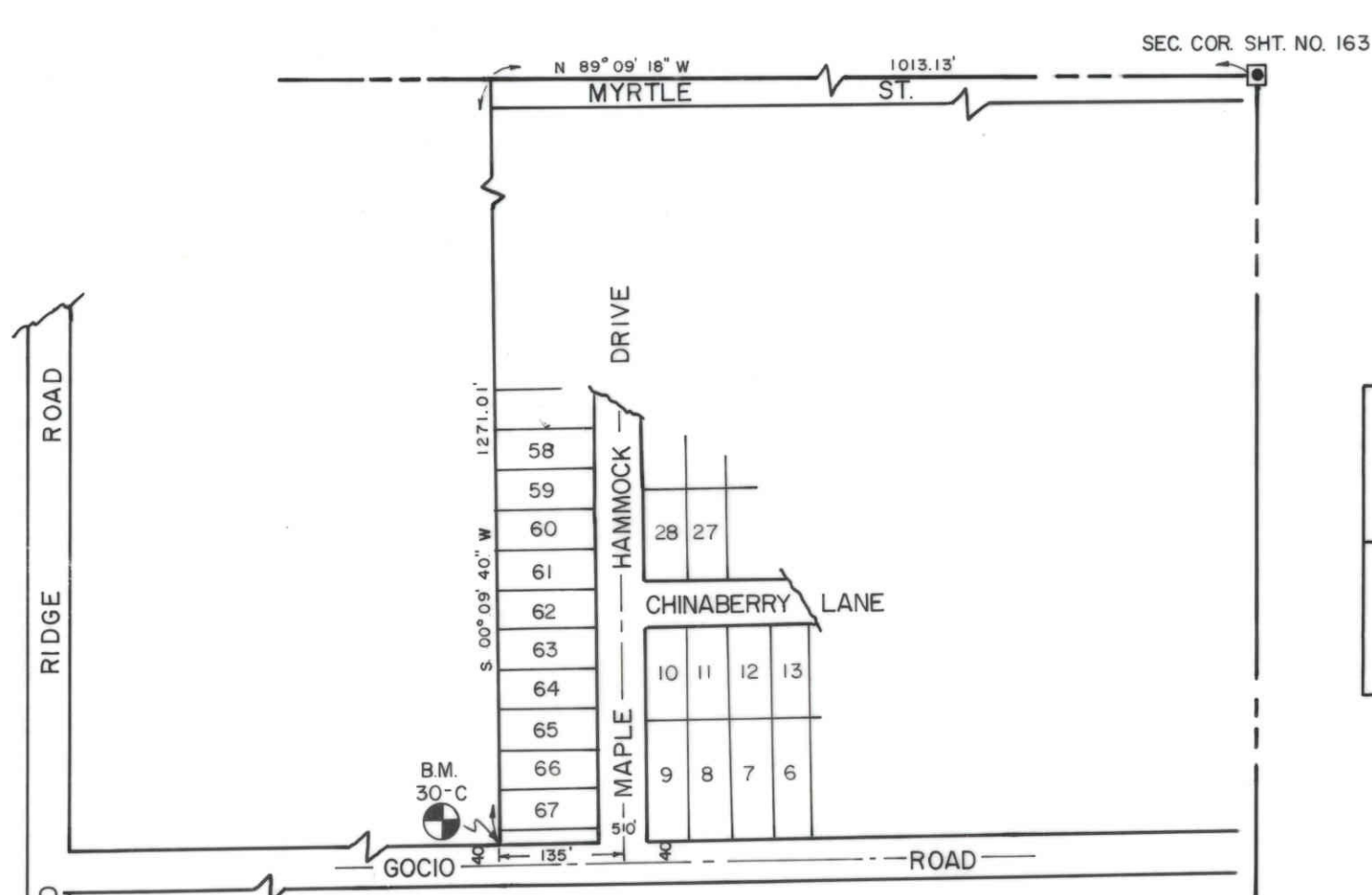
DATE DRAWN: 1-20-87 BY: RJJ

REF: SWFWMD HFH101 DATE 9/81

ELEV. BASED ON B.M. NO. NOS

DATE	TYPE	FB. PG.	BY
REVISIONS			

REVISIONS



MAPLE HAMMOCK P.B. 34/10-10B

SARASOTA COUNTY
 TRANSPORTATION DEPARTMENT
 ENGINEERING DIVISION

**BENCH MARK
 DATA SHEET**

ELEV.

32.54'

DATE DRAWN: 4-26-90 BY: KLP

BM. NO.

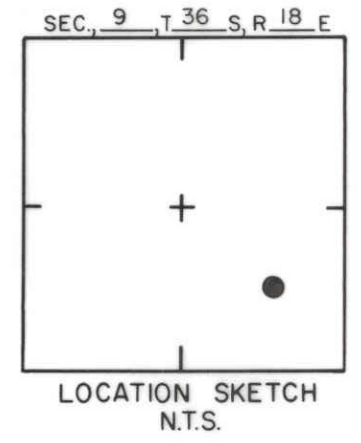
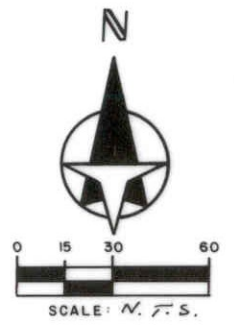
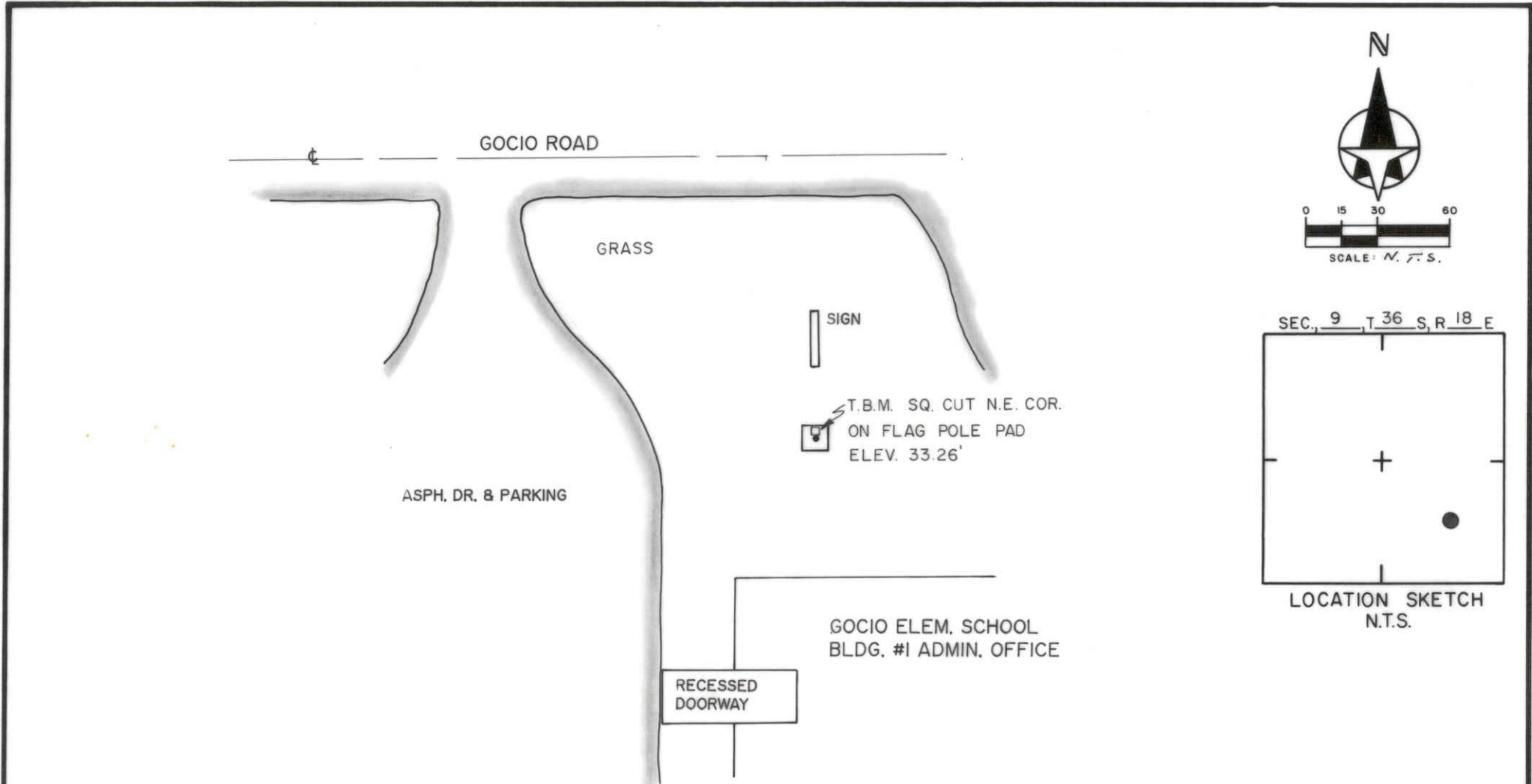
SET BY: LEMONDE

30-C

DATE	TYPE	F.B. PG.	BY
------	------	----------	----

REVISIONS

ELEV. BASED ON B.M. NO. R-32 EL. 31.104'



RECESSED
DOORWAY

GOCIO ELEM. SCHOOL
BLDG. #1 ADMIN. OFFICE

SARASOTA COUNTY
TRANSPORTATION DEPARTMENT
ENGINEERING DIVISION

**BENCH MARK
DATA SHEET**

ELEV.
33.26'
BM. NO.

DATE DRAWN: JULY 24, 1990 BY: KLP

DATE TYPE F.B. PG. BY REF: F.B. 318 PG. 26 DATE 6-11-90

REVISIONS

ELEV. BASED ON B.M. NO. 30-C

30-D